

FILE NO. 03-83
BOOK 1 PAGE 589

03 JAN -6 AM 11:40

PHYLLIS M. GERLACH
JACKSON COUNTY, IOWA
RECORDER Fee \$6.00

Prepared by: SCHNEIDER Land Surveying and Planning P.O. Box 105 Peosta, Iowa 52068 563-556-9055

UNITED STATES PUBLIC LAND SURVEY CORNER CERTIFICATE OF

Land Survey Monuments situated in Section 13, Township 86 North, Range 3 East of the Fifth Principal Meridian, Jackson County, Iowa.

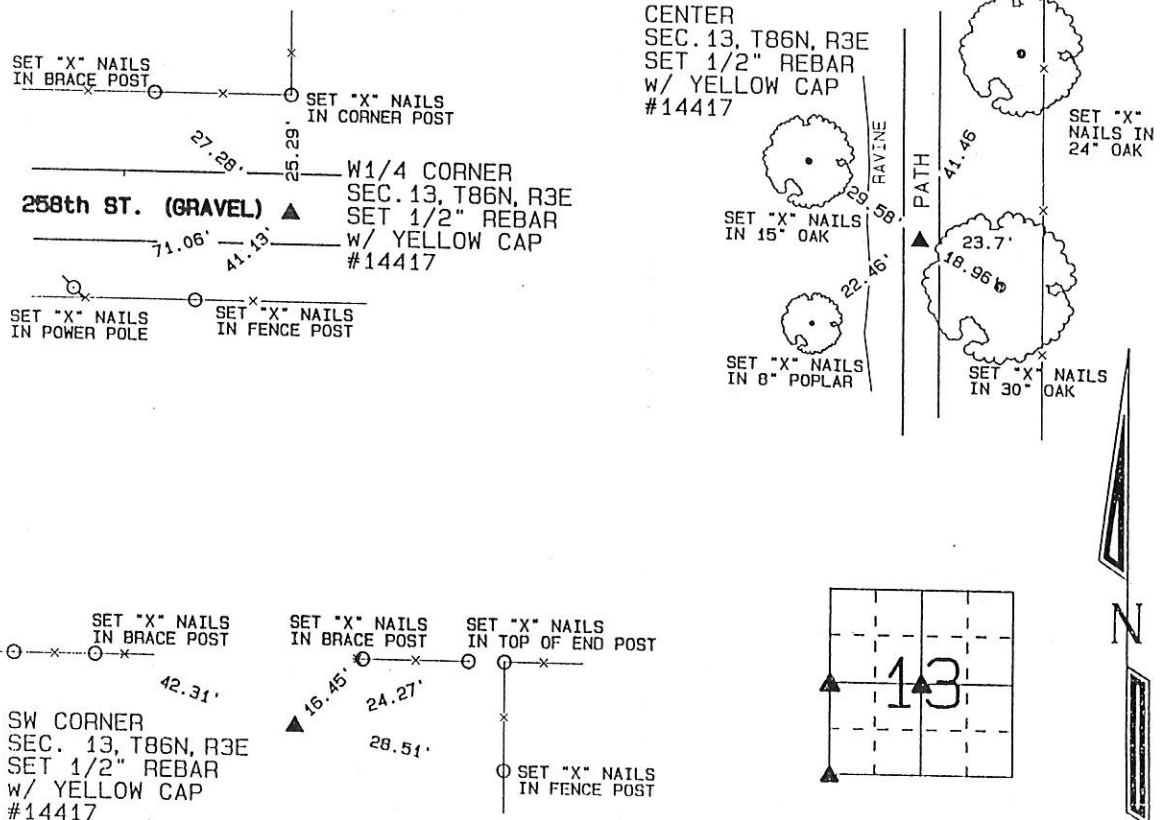
Previously recorded NONE OF RECORD

(Show reason for preparing this certificate, the evidence and detailed procedures used in establishing the corner positions and monumentation found or placed.)

Monument Description and Remarks: THE W1/4 CORNER OF SECTION 13, T86N, R3E WAS PLACED IN THE CENTER OF THE EAST-WEST COUNTY GRAVEL ROAD AND IN LINE WITH THE OCCUPATION FENCE LOCATED NORTH OF THE CORNER. THE CENTER OF SEC. 13, T86N, R3E WAS PLACED ON A STRAIGHT LINE BETWEEN THE N1/4 CORNER AND S1/4 CORNER OF SECTION 13 AND IN LINE WITH THE 1/4-1/4 LINE FENCE LOCATE A QUARTER MILE EAST OF THE CENTER OF THE SECTION. THE SW CORNER OF SEC. 13, T86N, R3E WAS REPLACED IN LINE WITH AN OCCUPATION FENCE LOCATED EAST AND WEST OF THE CORNER AND IN THE MIDDLE OF THE COUNTY GRAVEL ROAD LOCATED SOUTH OF THE CORNER.

PLAN - VIEW

(Show a minimum of three reference ties to durable physical objects, relevant monuments and physical conditions that will enable recovery of the corner.)



I hereby certify that this land surveying document was prepared and the related survey work was performed by me or under my direct personal supervision and that I am a duly licensed Land Surveyor under the laws of the State of Iowa.

David P. Schneider P.L.S. #14417
Date: 12/20/2002
My license renewal date is December 31, 2003.

Pages or sheets covered by this seal: THIS SHEET ONLY

SCHNEIDER

List Corners to be Indexed

Corners	Section	Twp	Range
W1/4	13	86N	3E
CENTER	13	86N	3E
SW	13	86N	3E



FILE NO. **03-1698**
PAGE **634**

03 MAR 28 AM 9:21

PHYLLIS M. GERLACH
JACKSON COUNTY, IOWA
RECORDER **fee \$6.00**

Prepared by: SCHNEIDER Land Surveying and Planning, Inc. P.O. Box 105 Peosta, Iowa 52068 563-556-9055

UNITED STATES PUBLIC LAND SURVEY CORNER CERTIFICATE OF

Land Survey Monuments situated in Section 13, Township 86 North, Range 3 East of the Fifth Principal Meridian, Jackson County, Iowa.
Previously recorded NONE OF RECORD

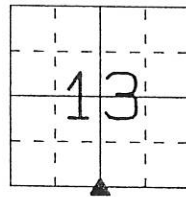
(BOOK, PAGE / INST. NO. / CABINET, SLIDE)

(Show reason for preparing this certificate, the evidence and detailed procedures used in establishing the corner positions and monumentation found or placed.)

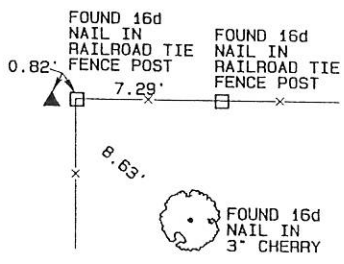
Monument Description and Remarks: A 3/4" REBAR WITH RED CAP #10134 WAS FOUND AT THE S1/4 CORNER SECTION 13. THE REBAR WAS TIED AND USED AS THE CORNER.

PLAN - VIEW

(Show a minimum of three reference ties to durable physical objects, relevant monuments and physical conditions that will enable recovery of the corner.)



S1/4 CORNER
SEC. 13, T86N, R3E
FOUND 3/4" REBAR
W/ RED CAP #10134

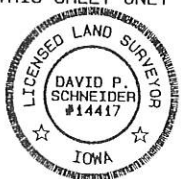


I hereby certify that this land surveying document was prepared and the related survey work was performed by me or under my direct personal supervision and that I am a duly licensed Land Surveyor under the laws of the State of Iowa.

David P. Schneider 3/28/2003
David P. Schneider P.L.S. #14417 Date:
My license renewal date is December 31, 2003.

2a sheets covered by this seal: THIS SHEET ONLY

SCHNEIDER
Land Surveying & Planning, Inc.
P.O. Box 105 Peosta, Iowa 52068
Ph. #563-556-9055 Fax #563-556-9054



List Corners to be Indexed

Corners	Section	Twp	Range
S1/4	13	86N	3E

4-4-03 See Corner Certificate in Book 2 Page 130 as file # 03-2014

FILE NO. **03-5541**
BOOK **2** PAGE **195**

03 SEP 19 PM 2:25

PHYLLIS M. GERLACH
JACKSON COUNTY, IOWA
RECORDER *Fee 11.00*

Prepared by: SCHNEIDER Land Surveying and Planning, Inc. P.O. Box 105 Peosta, Iowa 52068 563-556-9055

UNITED STATES PUBLIC LAND SURVEY CORNER CERTIFICATE OF

Land Survey Monuments situated in Section 13, Township 86 North, Range 3 East of the Fifth Principal Meridian, Jackson County, Iowa.

Previously recorded (NONE OF RECORD)

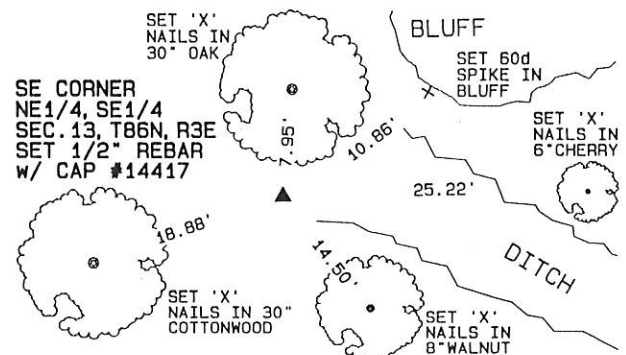
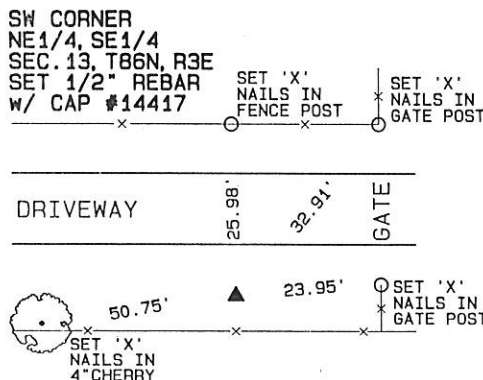
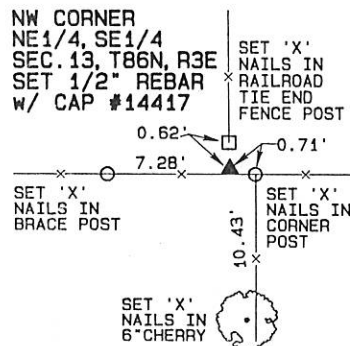
(BOOK, PAGE / INST. NO. / CABINET, SLIDE)

(Show reason for preparing this certificate, the evidence and detailed procedures used in establishing the corner positions and monumentation found or placed.)

Monument Description and Remarks: THE NW CORNER OF THE NE1/4 OF THE SE1/4 OF SECTION 13, T86N, R3E WAS ESTABLISHED AT THE INTERSECTION OF OCCUPATION FENCES. THE SW CORNER OF THE NE1/4 OF THE SE1/4 OF SECTION 13, T86N, R3E WAS ESTABLISHED AS ILLUSTRATED IN THE PLAT RECORDED IN THE HOMESTEAD RECORD BOOK 1 PAGE 154. THE SE CORNER OF THE NE1/4 OF THE SE1/4 OF SECTION 13, T86N, R3E WAS ESTABLISHED AT THE INTERSECTION OF A LINE FROM THE E1/4 CORNER TO THE SE1/4 OF SAID SECTION 13 AND A LINE EXTENDED WESTERLY FROM THE SW CORNER OF THE NE1/4 OF THE SW1/4 OF SECTION 18, T86N, R4W ALONG AN EXISTING EAST-WEST OCCUPATION FENCE.

PLAN - VIEW

(Show a minimum of three reference ties to durable physical objects, relevant monuments and physical conditions that will enable recovery of the corner.)



I hereby certify that this land surveying document was prepared and the related survey work was performed by me or under my direct personal supervision and that I am a duly licensed Land Surveyor under the laws of the State of Iowa.

David P. Schneider P.L.S. #14417 Date: 7/18/2003
My license renewal date is December 31, 2003.

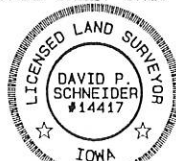
Pages or sheets covered by this seal: THIS SHEET ONLY

List Corners to be Indexed

Corners	Section	Twp	Range
NW CORNER NE1/4, SE1/4	13	86 N	3E
SW CORNER NE1/4, SE1/4	13	86 N	3E
SE CORNER NE1/4, SE1/4	13	86 N	3E

SCHNEIDER
Land Surveying & Planning, Inc.

P.O. Box 105 Peosta, Iowa 52068
Ph. #563-556-9055 Fax#563-556-9054



JOB NO. 298PP

Book 2 Page 195

FILE NO. 03-5658
BOOK 2 PAGE 176

03 SEP 26 AM 9:30

PHYLLIS M. GERLACH
JACKSON COUNTY, IOWA
RECORDER Fee \$11.00

Prepared by: SCHNEIDER Land Surveying and Planning, Inc. P.O. Box 105 Peosta, Iowa 52068 563-556-9055

UNITED STATES PUBLIC LAND SURVEY CORNER CERTIFICATE OF

Land Survey Monuments situated in Section 13, Township 86 North, Range 3 East
of the Fifth Principal Meridian, Jackson County, Iowa.

Previously recorded NONE OF RECORD

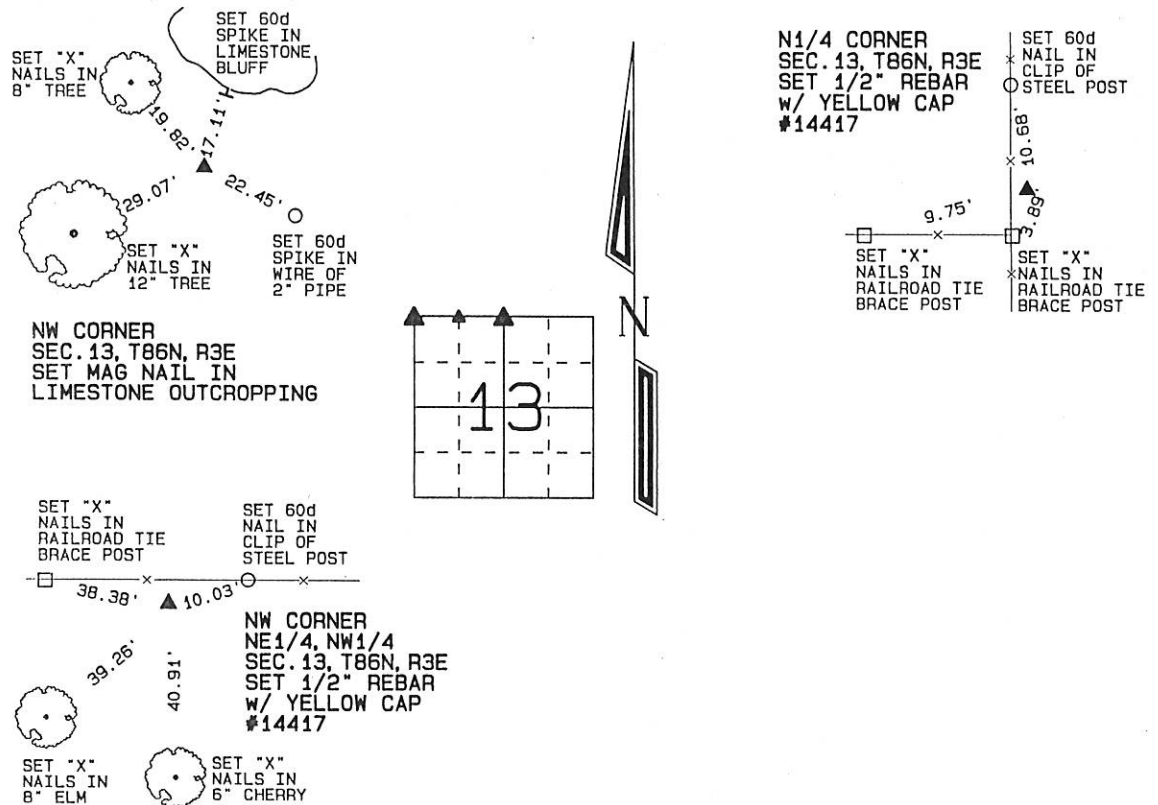
(BOOK, PAGE / INST. NO. / CABINET, SLIDE)

(Show reason for preparing this certificate, the evidence and detailed procedures used in establishing the corner positions and monumentation found or placed.)

Monument Description and Remarks: THE NW CORNER OF SEC. 13, T86N, R3E WAS ESTABLISHED USING THE BEST ALIGNMENT OF OCCUPATION EVIDENCE. THE N1/4 CORNER OF SEC. 13, T86N, R3E WAS ESTABLISHED IN LINE WITH THE S1/4 CORNER AND THE CENTER OF SAID SECTION 13 AND BY USING OCCUPATION EVIDENCE. THE NW CORNER OF THE NE1/4 OF THE NW1/4 OF SEC. 13, T86N, R3E WAS ESTABLISHED AT THE MIDPOINT OF A LINE FROM THE NW CORNER OF SAID SECTION 13 TO THE N1/4 CORNER OF SAID SECTION 13.

PLAN - VIEW

(Show a minimum of three reference ties to durable physical objects, relevant monuments and physical conditions that will enable recovery of the corner.)



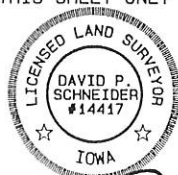
I hereby certify that this land surveying document was prepared and the related survey work was performed by me or under my direct personal supervision and that I am a duly licensed Land Surveyor under the laws of the State of Iowa.

David P. Schneider 7/18/2002
David P. Schneider P.L.S. #14417 Date:
My license renewal date is December 31, 2003.

Pages or sheets covered by this seal: THIS SHEET ONLY

SCHNEIDER
Land Surveying & Planning, Inc.

P.O. Box 105 Peosta, Iowa 52068
Ph. #563-556-9055 Fax #563-556-9054



List Corners to be Indexed

Corners	Section	Twp	Range
NW	13	86N	3E
N1/4	13	86N	3E
NW CORNER NE1/4, NW1/4	13	86N	3E

03 SEP 26 AM 9:30

PHYLLIS M. GERLACH
JACKSON COUNTY, IOWA
RECORDER

Fee \$11.⁰⁰

Prepared by: SCHNEIDER Land Surveying and Planning, Inc. P.O. Box 105 Peosta, Iowa 52068 563-556-9055

UNITED STATES PUBLIC LAND SURVEY CORNER CERTIFICATE OF

Land Survey Monuments situated in Section 13, Township 86 North, Range 3 East of the Fifth Principal Meridian, Jackson County, Iowa.

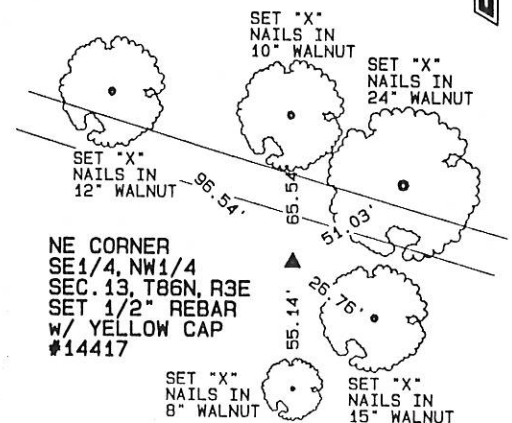
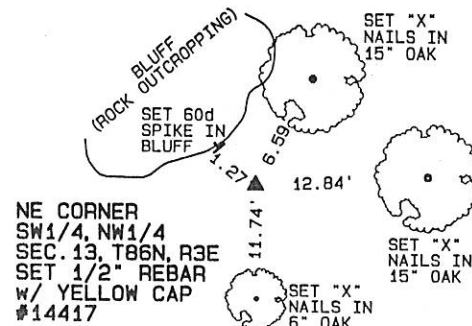
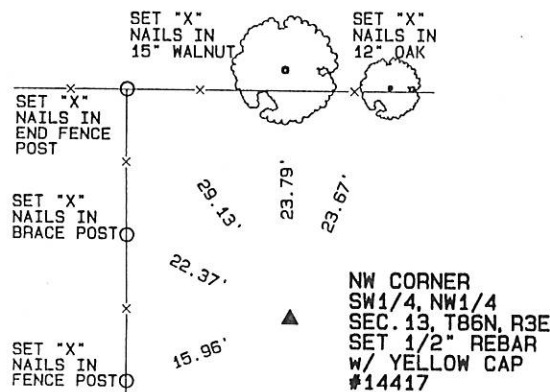
Previously recorded (NONE OF RECORD)

(Show reason for preparing this certificate, the evidence and detailed procedures used in establishing the corner positions and monumentation found or placed.)

Monument Description and Remarks: THE NW CORNER OF THE SW1/4 OF THE NW1/4 WAS ESTABLISHED AT THE MIDPOINT OF A LINE FROM THE W1/4 CORNER TO THE NW CORNER OF SECTION 13. THE NE CORNER OF THE SW1/4 OF THE NW1/4 WAS ESTABLISHED AT THE THEORETICAL CENTER OF THE NORTHWEST QUARTER OF SECTION 13, T86N, R3E. THE NE CORNER OF THE SE1/4 OF THE NW1/4 WAS ESTABLISHED AT THE MIDPOINT OF A LINE FROM THE CENTER TO THE N1/4 CORNER OF SECTION 13.

PLAN - VIEW

(Show a minimum of three reference ties to durable physical objects, relevant monuments and physical conditions that will enable recovery of the corner.)



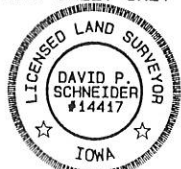
I hereby certify that this land surveying document was prepared and the related survey work was performed by me or under my direct personal supervision and that I am a duly licensed Land Surveyor under the laws of the State of Iowa.

David P. Schneider 8/13/2003
David P. Schneider P.L.S. #14417 /Date:
My license renewal date is December 31, 2003.

Pages or sheets covered by this seal: THIS SHEET ONLY

SCHNEIDER
Land Surveying & Planning, Inc.

P.O. Box 105 Peosta, Iowa 52068
Ph. #563-556-9055 Fax#563-556-9054



List Corners to be Indexed

Corners	Section	Twp	Range
NW CORNER SW1/4, NW1/4	13	86N	3E
NE CORNER SW1/4, NW1/4	13	86N	3E
NE CORNER SE1/4, NW1/4	13	86N	3E



Document 05-4674

Book 2 Page 400 Type 06 023 Pages 1

Date 11/17/2005 Time 10:33 AM

Rec Amt \$7.00

PHYLLIS M. GERLACH, RECORDER
JACKSON COUNTY IOWA

Prepared by: SCHNEIDER Land Surveying and Planning, Inc. P.O. Box 128 Farley, Iowa 52046 563-744-3631

UNITED STATES PUBLIC LAND SURVEY CORNER CERTIFICATE OFLand Survey Monuments situated in Section 13, Township 86 North, Range 3 East
of the Fifth Principal Meridian, Jackson County, Iowa.

Previously recorded

(NONE OF RECORD)

(BOOK, PAGE / INST. NO. / CABINET, SLIDE)

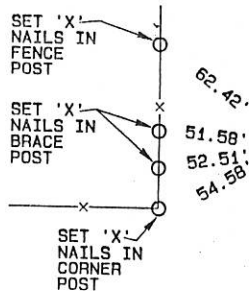
(Show reason for preparing this certificate, the evidence and detailed procedures used in establishing the corner positions and monumentation found or placed.)

Monument Description and Remarks: A SMALL REBAR WITH A WHITE CAP WAS FOUND LYING FLAT ON THE GROUND
NEAR THE SE CORNER OF SEC. 13, T86N, R3E. THE SE CORNER WAS REESTABLISHED AS INDICATED ON A PLAT OF SURVEY OF

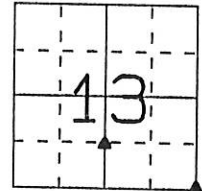
PARCEL 'A', IN THE NW1/4 OF THE NE1/4 OF SECTION 24, T86N, R3E, FILED MARCH 4, 1997 IN BOOK 1-I, PAGE 137.

THE SW CORNER OF THE NW1/4 OF THE SE1/4 OF SEC. 13, T86N, R3E WAS PLACED AT THE MIDPOINT OF A LINE FROM THE
CENTER TO THE SOUTH QUARTER CORNER OF SAID SECTION 13.**PLAN - VIEW**

(Show a minimum of three reference ties to durable physical objects, relevant monuments and physical conditions that will enable recovery of the corner.)



SW CORNER
NW1/4, SE1/4
SEC. 13, T86N, R3E
SET 1/2" REBAR
w/ CAP #14417



SE CORNER
SEC. 13, T86N, R3E
SET 1/2" REBAR
w/ CAP #14417

20d NAIL
FOUND IN
12" ELM

20d NAIL
FOUND IN
TWIN OAK

20d NAIL
FOUND IN
20" WALNUT

I hereby certify that this land surveying document was prepared and the related survey work was performed by me or under my direct personal supervision and that I am a duly licensed Land Surveyor under the laws of the State of Iowa.

David P. Schneider P.L.S. #14417

Date:

My license renewal date is December 31, 2005.

Pages or sheets covered by this seal: THIS SHEET ONLY

List Corners to be Indexed

Corners	Section	Twp	Range
SW CORNER NW1/4, SE1/4	13	86N	3E
SE CORNER	13	86N	3E

SCHNEIDER
Land Surveying & Planning, Inc.

P.O. Box 128 Farley, Iowa 52046
Ph. #563-744-3631 Fax#563-744-3629



JOB NO. 829