

PHYLLIS M. GERLACH, RECORDER
JACKSON COUNTY IOWA

Prepared by: SCHNEIDER Land Surveying and Planning, Inc. P.O. Box 128 Farley, Iowa 52046 563-744-3631

UNITED STATES PUBLIC LAND SURVEY CORNER CERTIFICATE OF

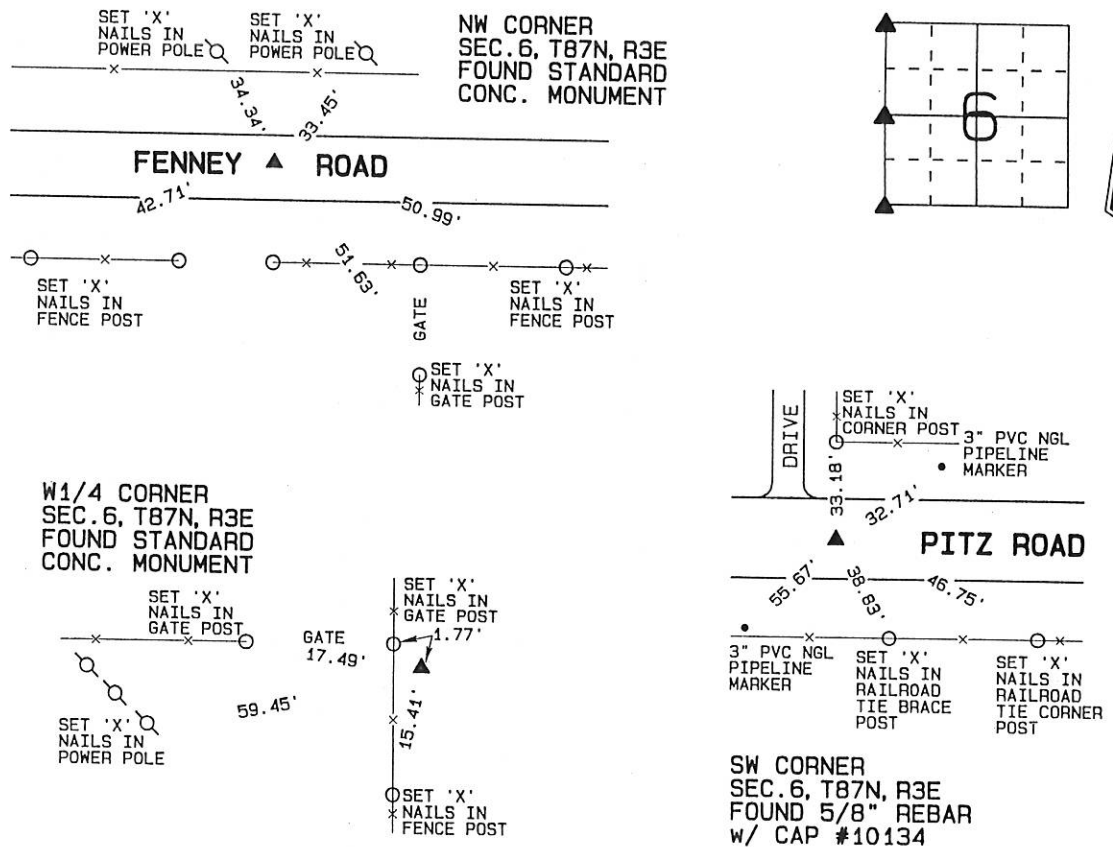
Land Survey Monuments situated in Section 6, Township 87 North, Range 3 East
of the Fifth Principal Meridian, Jackson County, Iowa.
Previously recorded (NONE OF RECORD)

(Show reason for preparing this certificate, the evidence and detailed procedures used in establishing the corner positions and monumentation found or placed.)

Monument Description and Remarks: A STANDARD CONCRETE MONUMENT WAS FOUND AT THE NW CORNER OF SEC. 6, T87N, R3E. THE MONUMENT WAS TIED AND USED AS THE NW CORNER. A STANDARD CONCRETE MONUMENT WAS FOUND AT THE W1/4 CORNER OF SEC. 6, T87N, R3E. THE MONUMENT WAS TIED AND USED AS THE W1/4 CORNER. A 5/8" REBAR WITH CAP #10134 WAS FOUND AT THE SW CORNER OF SEC. 6, T87N, R3E. THE REBAR WAS TIED AND USED AS THE SW CORNER.

PLAN - VIEW

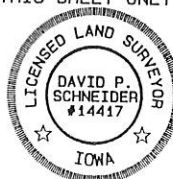
(Show a minimum of three reference ties to durable physical objects, relevant monuments and physical conditions that will enable recovery of the corner.)



I hereby certify that this land surveying document was prepared and the related survey work was performed by me or under my direct personal supervision and that I am a duly licensed Land Surveyor under the laws of the State of Iowa.

David P. Schneider P.L.S. #14417 Date: 3/22/2005
My license renewal date is December 31, 2005.
Pages or sheets covered by this seal: THIS SHEET ONLY

SCHNEIDER
Land Surveying & Planning, Inc.
P.O. Box 128 Farley, Iowa 52046
Ph. #563-744-3631 Fax #563-744-3629



List Corners to be Indexed

Corners	Section	Twp	Range
NW	6	87N	3E
W1/4	6	87N	3E
SW	6	87N	3E



Document 05-1111

Book 2 Page 338 Type 06 23 Pages 1

Date 3/23/2005 Time 9:13 AM

Rec Amt \$7.00

PHYLLIS M. GERLACH, RECORDER
JACKSON COUNTY IOWA

Prepared by: SCHNEIDER Land Surveying and Planning, Inc. P.O. Box 128 Farley, Iowa 52046 563-744-3631

UNITED STATES PUBLIC LAND SURVEY CORNER CERTIFICATE OF

Land Survey Monuments situated in Section 6, Township 87 North, Range 3 East of the Fifth Principal Meridian, Jackson County, Iowa.

Previously recorded

(NONE OF RECORD)

(BOOK, PAGE / INST. NO. / CABINET, SLIDE)

(Show reason for preparing this certificate, the evidence and detailed procedures used in establishing the corner positions and monumentation found or placed.)

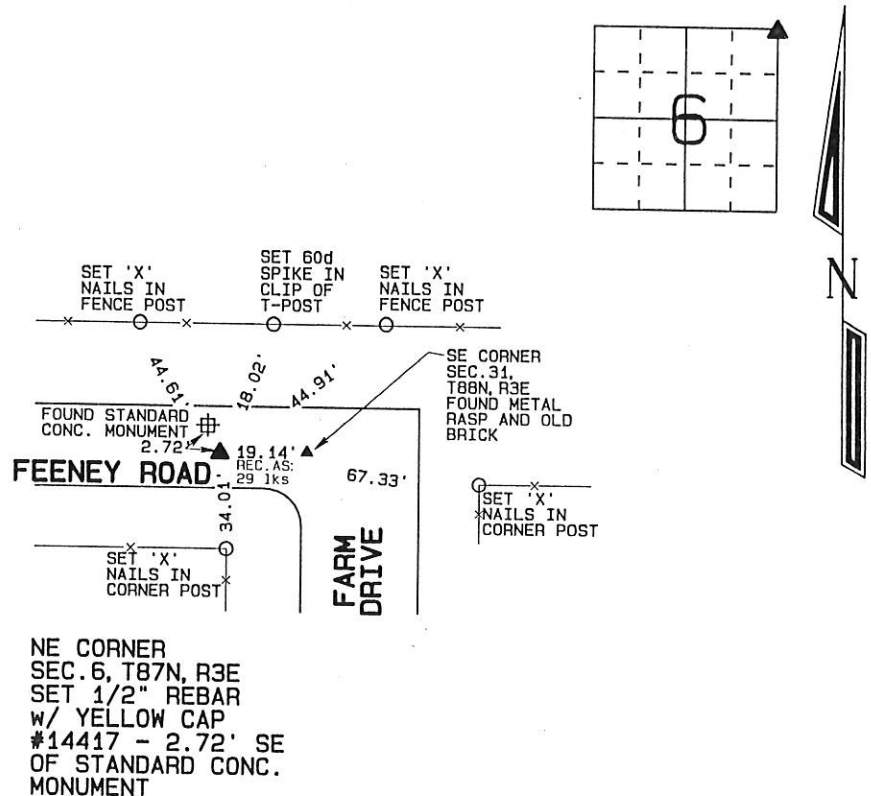
Monument Description and Remarks: THE NE CORNER OF SEC. 6, T87N, R3E WAS ESTABLISHED 19.14' (29 LINKS)

WEST OF THE SE CORNER OF SEC. 31, T88N, R3E AS ILLUSTRATED IN THE ORIGINAL GOVERNMENT SURVEY OF JACKSON COUNTY.

THE NE CORNER WAS PLACED IN LINE WITH AN OCCUPATION FENCE LOCATED SOUTH OF THE CORNER.

PLAN - VIEW

(Show a minimum of three reference ties to durable physical objects, relevant monuments and physical conditions that will enable recovery of the corner.)



I hereby certify that this land surveying document was prepared and the related survey work was performed by me or under my direct personal supervision and that I am a duly licensed Land Surveyor under the laws of the State of Iowa.

David P. Schneider P.L.S. #14417

Date:

My license renewal date is December 31, 2005.

Pages or sheets covered by this seal: THIS SHEET ONLY

List Corners to be Indexed

Corners	Section	Twp	Range
NE CORNER	6	87N	3E

SCHNEIDER
Land Surveying & Planning, Inc.

P.O. Box 128 Farley, Iowa 52046
Ph. #563-744-3631 Fax#563-744-3629



JOB NO. 666

Book 2 Page 338



Document 05-1112

Book 2 Page 339 Type 06 23 Pages 1
Date 3/23/2005 Time 9:13 AM
Rec Amt \$7.00

PHYLLIS M. GERLACH, RECORDER
JACKSON COUNTY IOWA

Prepared by: SCHNEIDER Land Surveying and Planning, Inc. P.O. Box 128 Farley, Iowa 52046 563-744-3631

UNITED STATES PUBLIC LAND SURVEY CORNER CERTIFICATE OF

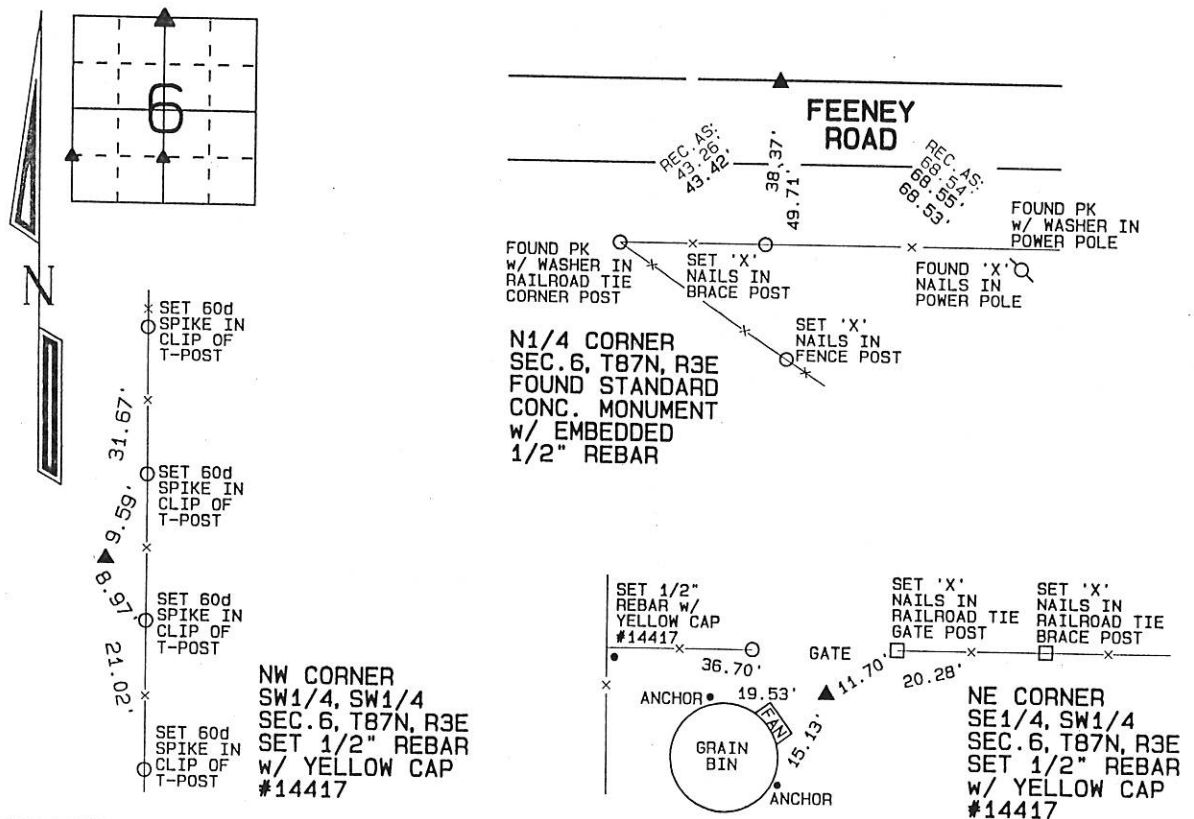
Land Survey Monuments situated in Section 6, Township 87 North, Range 3 East
of the Fifth Principal Meridian, Jackson County, Iowa.
Previously recorded (NONE OF RECORD)

(Show reason for preparing this certificate, the evidence and detailed procedures used in establishing the corner positions and monumentation found or placed.)

Monument Description and Remarks: A STANDARD CONCRETE MONUMENT WITH EMBEDDED 1/2" REBAR WAS FOUND AT THE N1/4 CORNER OF SEC. 6, T87N, R3E AS ILLUSTRATED IN A SECTION CORNER CERTIFICATE DATED FEB. 19, 1992 THAT WAS OBTAINED FROM THE DUBUQUE COUNTY ENGINEER. THE CORNER WAS RE-TIED BECAUSE ONLY TWO TIES REMAINED. THE EMBEDDED REBAR WAS TIED AND USED AS THE N1/4 CORNER. THE NW CORNER OF THE SW1/4 OF THE SW1/4 OF SEC. 6, T87N, R3E WAS ESTABLISHED AT THE MIDPOINT OF A LINE BETWEEN THE SW CORNER AND THE W1/4 CORNER OF SAID SECTION 6. THE NE CORNER OF THE SE1/4 OF THE SW1/4 OF SEC. 6, T87N, R3E WAS ESTABLISHED AT THE MIDPOINT OF A LINE FROM THE S1/4 CORNER TO THE CENTER OF SAID SECTION 6.

PLAN - VIEW

(Show a minimum of three reference ties to durable physical objects, relevant monuments and physical conditions that will enable recovery of the corner.)

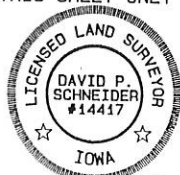


I hereby certify that this land surveying document was prepared and the related survey work was performed by me or under my direct personal supervision and that I am a duly licensed Land Surveyor under the laws of the State of Iowa.

David P. Schneider P.L.S. #14417 Date: 3/22/2005
My license renewal date is December 31, 2005.
Pages or sheets covered by this seal: THIS SHEET ONLY

SCHNEIDER
Land Surveying & Planning, Inc.

P.O. Box 128 Farley, Iowa 52046
Ph. #563-744-3631 Fax #563-744-3629



List Corners to be Indexed

Corners	Section	Twp	Range
N1/4 CORNER	6	87N	3E
NW CORNER SW1/4, SW1/4	6	87N	3E
NE CORNER SE1/4, SW1/4	6	87N	3E