

02 0594  
FILE NO  
BOOK PAGE 536

02 FEB -1 PM 2:43

PHYLLIS M. GERLACH  
JACKSON COUNTY, IOWA  
RECORDER

Fee 6.00

Preparer's Name: Paul C. Brashaw Address: 4413 West Stagecoach Trail Galena, Ill. Telephone: 777-1172

SLSI 9-94

# UNITED STATES PUBLIC LAND SURVEY CORNER CERTIFICATE

OF

Land Survey Monuments situated in Section 35 Township 87 North Range 3 East, of the Fifth Principal Meridian, Jackson County, Iowa. Previously recorded in ~~no corner certificate~~ in County Recorder's Office. (book, page, document number, etc.) on File

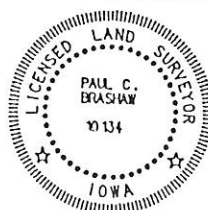
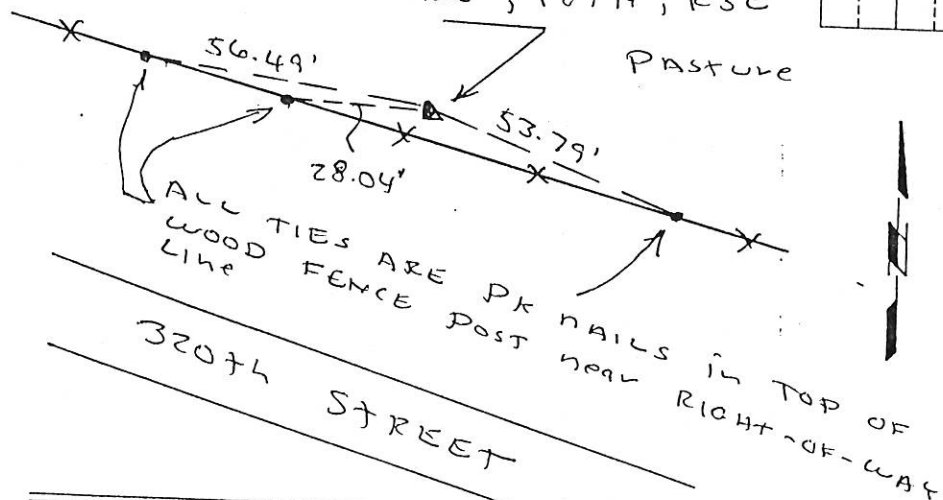
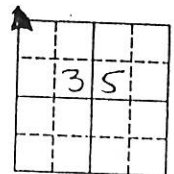
(Show reason for preparing this certificate, the evidence and detailed procedures used in establishing the corner positions and monumentation found or placed.)

Monument Description and Remarks: SET 3/4" x 36" IRON ROD WITH ORANGE CAP # 10134 AT THE NW CORNER OF SECTION 35 T87N, R3E. CORNER WAS ESTABLISHED BY ANALYSIS OF FIELD MEASUREMENTS AND OCCUPATION FENCES EAST AND SOUTH OF CORNER.

PLAN - VIEW

(Show a minimum of three reference ties to durable physical objects, relevant monuments and physical conditions that will enable recovery of the corner.)

SET 3/4" x 36" IRON ROD WITH ORANGE CAP # 10134 AT THE NORTHWEST CORNER OF SECTION 35, T87N, R3E



I HEREBY CERTIFY THAT THIS LAND SURVEYING DOCUMENT WAS PREPARED AND THE RELATED SURVEY WORK WAS PERFORMED BY ME OR UNDER MY DIRECT PERSONAL SUPERVISION AND THAT I AM A DULY LICENSED LAND SURVEYOR UNDER THE LAWS OF THE STATE OF IOWA.  
Paul C. Brashaw 1-31-2002  
PAUL C. BRASHAW (DATE)  
LICENSE NUMBER 10134  
MY LICENSE RENEWAL DATE IS DECEMBER 31, 2002

List Corners to be Indexed  
Corners Section Top Range  
NW 35 87N 3E

MONUMENT RECORD  
COUNTY: JACKSON  
TOWNSHIP: PRAIRIE SPRINGS

DATE PLOTTED:  
DATE REVISED:

FIELD BOOK #  
PAGE #

DRAWING

FILE NO. 02 0595  
BOOK 1 PAGE 537

02 FEB -1 PM 2:43

THYLIS M. GERLACH  
JACKSON COUNTY, IOWA  
RECORDER

Fee 6.00

Preparer's Name: Paul C. Brashaw Address: 4413 West Stagecoach Trail Galena, Ill. Telephone: 777-1172

SLSI 9-94

# UNITED STATES PUBLIC LAND SURVEY CORNER CERTIFICATE

OF

Land Survey Monuments situated in Section 35, Township 87 North, Range 3 East, of the Fifth Principal Meridian, JACKSON County, Iowa.  
Previously recorded in NO corner certificate on In County Recorder's Office.  
(book, page, document number, etc.) File

(Show reason for preparing this certificate, the evidence and detailed procedures used in establishing the corner positions and monumentation found or placed.)

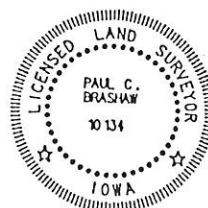
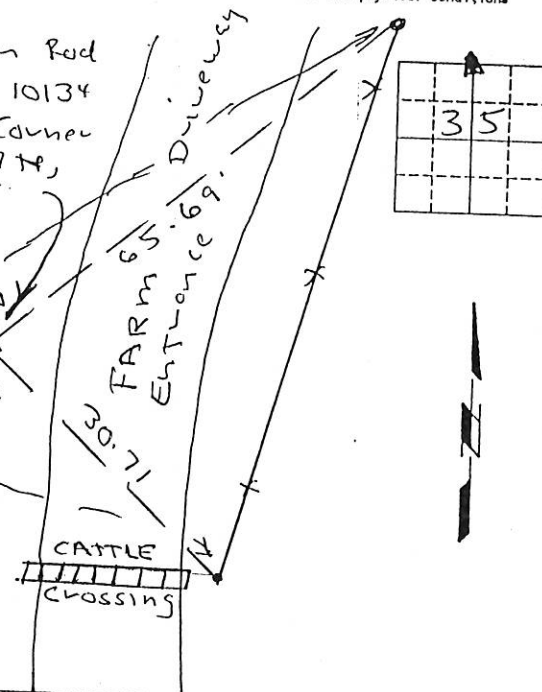
Monument Description and Remarks: Set 3/4" x 36" iron rod with orange cap #10134 at the north 1/4 corner of Section 35, T87N, R3E. Corner was established by analysis of field measurements and occupation fences west & south of corner.

(Show a minimum of three reference ties to durable physical objects, relevant monuments and physical conditions that will enable recovery of the corner.)

## PLAN - VIEW

SET 3/4" x 36" iron rod with orange cap #10134 at the north 1/4 corner of Section 35 T87N, R3E

ALL TIES ARE 60 D NAILS IN TOP OF WOOD FENCE POSTS



I HEREBY CERTIFY THAT THIS LAND SURVEYING DOCUMENT WAS PREPARED AND THE RELATED SURVEY WORK WAS PERFORMED BY ME OR UNDER MY DIRECT PERSONAL SUPERVISION AND THAT I AM A DULY LICENSED LAND SURVEYOR UNDER THE LAWS OF THE STATE OF IOWA.

Paul C. Brashaw 1-31-2002  
PAUL C. BRASHAW (DATE)

LICENSE NUMBER 10134

MY LICENSE RENEWAL DATE IS DECEMBER 31, 2002

List Corners to be Indexed  
Corners Section Top Range  
N 14 35 T87N R3E

MONUMENT RECORD  
COUNTY: JACKSON  
TOWNSHIP: PLAINE

FILE NO. 03-1927  
BOOK 2 PAGE 65

03 APR -3 AM 7:30

PHYLLIS M. GERLACH  
JACKSON COUNTY, IOWA  
RECORDER

Fee \$6.00

Preparer's Name: Paul C. Brashaw Address: 4413 West Stagecoach Trail Galena, Ill. Telephone: 777-1172

SLSI 9-94

# UNITED STATES PUBLIC LAND SURVEY CORNER CERTIFICATE

OF

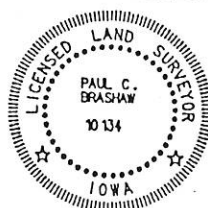
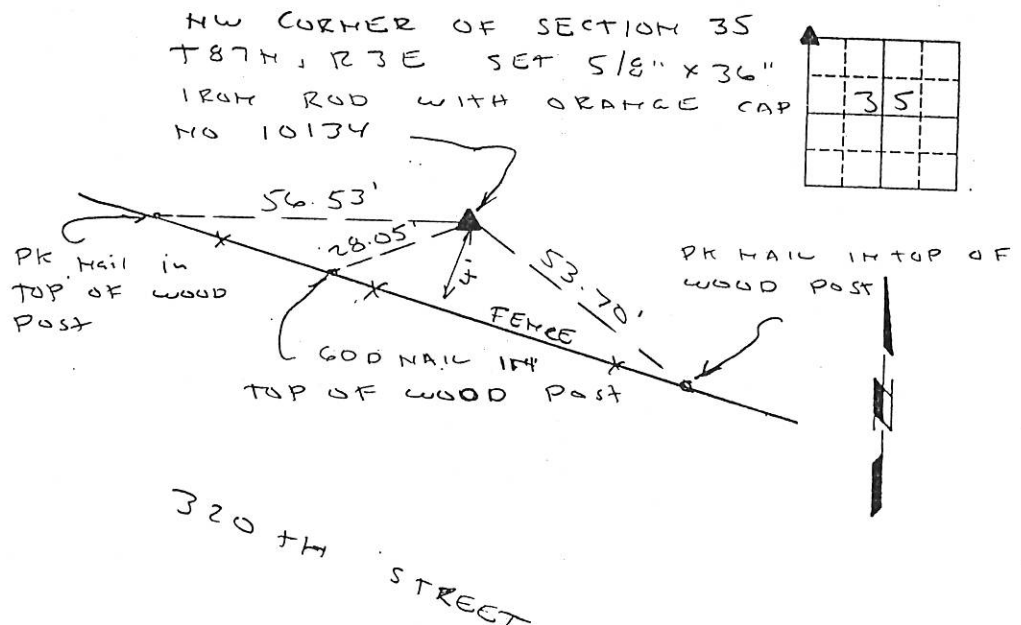
Land Survey Monuments situated in Section 35, Township 87 NORTH Range  
3 EAST, of the Fifth Principal Meridian, JACKSON County, Iowa.  
Previously recorded in \_\_\_\_\_ in County Recorder's Office.  
(book, page, document number, etc.)

(Show reason for preparing this certificate, the evidence and detailed procedures used in establishing the corner positions and monumentation found or placed.)

Monument Description and Remarks: NW CORNER OF SECTION 35, T87N  
R3E, SET 5/8" X 36" IRON ROD WITH ORANGE CAP  
NO. 10134, CORNER ESTABLISHED BY MEASUREMENTS  
AND COMPUTATIONS OF DEED FENCE LINES AND THEIR  
ALIGNMENT EXTENDED.

## PLAN - VIEW

(Show a minimum of three reference ties to durable physical objects, relevant monuments and physical conditions that will enable recovery of the corner.)



I HEREBY CERTIFY THAT THIS LAND SURVEYING DOCUMENT WAS PREPARED AND THE RELATED SURVEY WORK WAS PERFORMED BY ME OR UNDER MY DIRECT PERSONAL SUPERVISION AND THAT I AM A DULY LICENSED LAND SURVEYOR UNDER THE LAWS OF THE STATE OF IOWA.

Paul C. Brashaw 3/31/2003  
PAUL C. BRASHAW (DATE)

LICENSE NUMBER 10134

MY LICENSE RENEWAL DATE IS DECEMBER 31, 2004

| Corner    | List Section | Corner to be Indexed | Range |
|-----------|--------------|----------------------|-------|
| NW Corner | 35           | 87N                  | 3E    |

| MONUMENT RECORD                  |              |         |
|----------------------------------|--------------|---------|
| COUNTY: <u>JACKSON</u>           |              |         |
| TOWNSHIP: <u>PRAIRIE SPRINGS</u> |              |         |
| DATE PLOTTED:                    | FIELD BOOK # | DRAWING |
| DATE REVISED:                    | PAGE #       | #       |

FILE NO. 04-2827  
PAGE 285

04 JUN 18 AM 9:31

PHYLLIS M. GERLACH  
JACKSON COUNTY, IOWA  
RECORDER Fee 11.00

Prepared by: SCHNEIDER Land Surveying and Planning, Inc. P.O. Box 128 Farley, Iowa 52046 563-744-3631

### UNITED STATES PUBLIC LAND SURVEY CORNER CERTIFICATE OF

Land Survey Monuments situated in Section 35, Township 87 North, Range 3 East of the Fifth Principal Meridian, Jackson County, Iowa.  
Previously recorded (NONE OF RECORD)

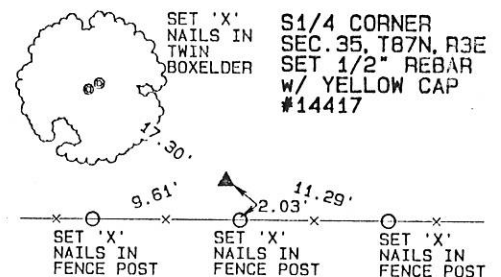
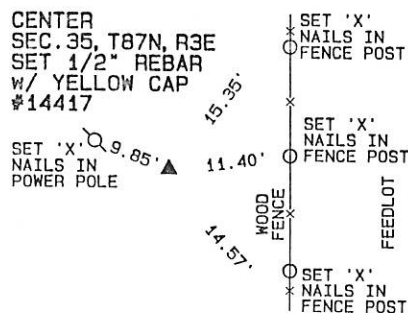
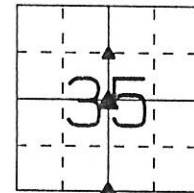
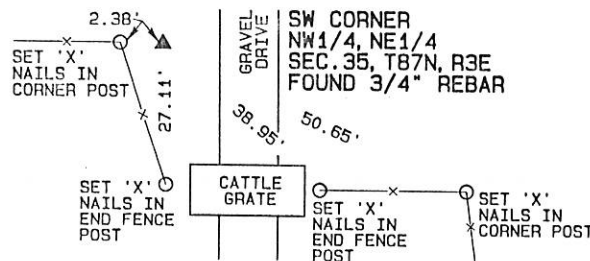
(BOOK, PAGE / INST. NO. / CABINET, SLIDE)

(Show reason for preparing this certificate, the evidence and detailed procedures used in establishing the corner positions and monumentation found or placed.)

Monument Description and Remarks: A 3/4" REBAR WAS FOUND AT THE SW CORNER OF THE NW1/4 OF THE NE1/4 OF SEC. 35, T87N, R3E. THE CENTER OF SEC. 35, T87N, R3E WAS ESTABLISHED ON A LINE FROM THE N1/4 CORNER TO THE S1/4 CORNER AND AT A DOUBLED DISTANCE FROM THE N1/4 CORNER TO THE SW CORNER OF THE NW1/4 OF THE NE1/4 OF SAID SECTION 35. THE S1/4 CORNER OF SEC. 35, T87N, R3E WAS ESTABLISHED ON LINE FROM THE SW CORNER OF SAID SECTION 35 THROUGH THE N1/4 CORNER OF SECTION 2, T86N, R3E AS OCCUPIED AND BY DOUBLING THE DISTANCE FROM THE SW CORNER THROUGH THE SW CORNER OF THE SE1/4 OF THE SW1/4 OF SAID SECTION 35.

### PLAN - VIEW

(Show a minimum of three reference ties to durable physical objects, relevant monuments and physical conditions that will enable recovery of the corner.)



I hereby certify that this land surveying document was prepared and the related survey work was performed by me or under my direct personal supervision and that I am a duly licensed Land Surveyor under the laws of the State of Iowa.

David P. Schneider P.L.S. #14417

Date: 6/16/2004

My license renewal date is December 31, 2005.

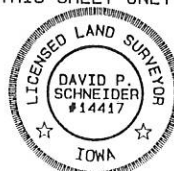
Pages or sheets covered by this seal: THIS SHEET ONLY

#### List Corners to be Indexed

| Corners                   | Section | Twp | Range |
|---------------------------|---------|-----|-------|
| SW CORNER<br>NW1/4, NE1/4 | 35      | 87N | 3E    |
| CENTER                    | 35      | 87N | 3E    |
| S1/4                      | 35      | 87N | 3E    |

**SCHNEIDER**  
Land Surveying & Planning, Inc.

P.O. Box 128 Farley, Iowa 52046  
Ph. #563-744-3631 Fax#563-744-3629



JOB NO. 648SCC

FILE NO. 04-2828  
PAGE 286

04 JUN 18 AM 9:31

PHYLLIS M. GERLACH  
JACKSON COUNTY, IOWA  
RECORDER Fee 11.00

Prepared by: SCHNEIDER Land Surveying and Planning, Inc. P.O. Box 128 Farley, Iowa 52046 563-744-3631

## UNITED STATES PUBLIC LAND SURVEY CORNER CERTIFICATE OF

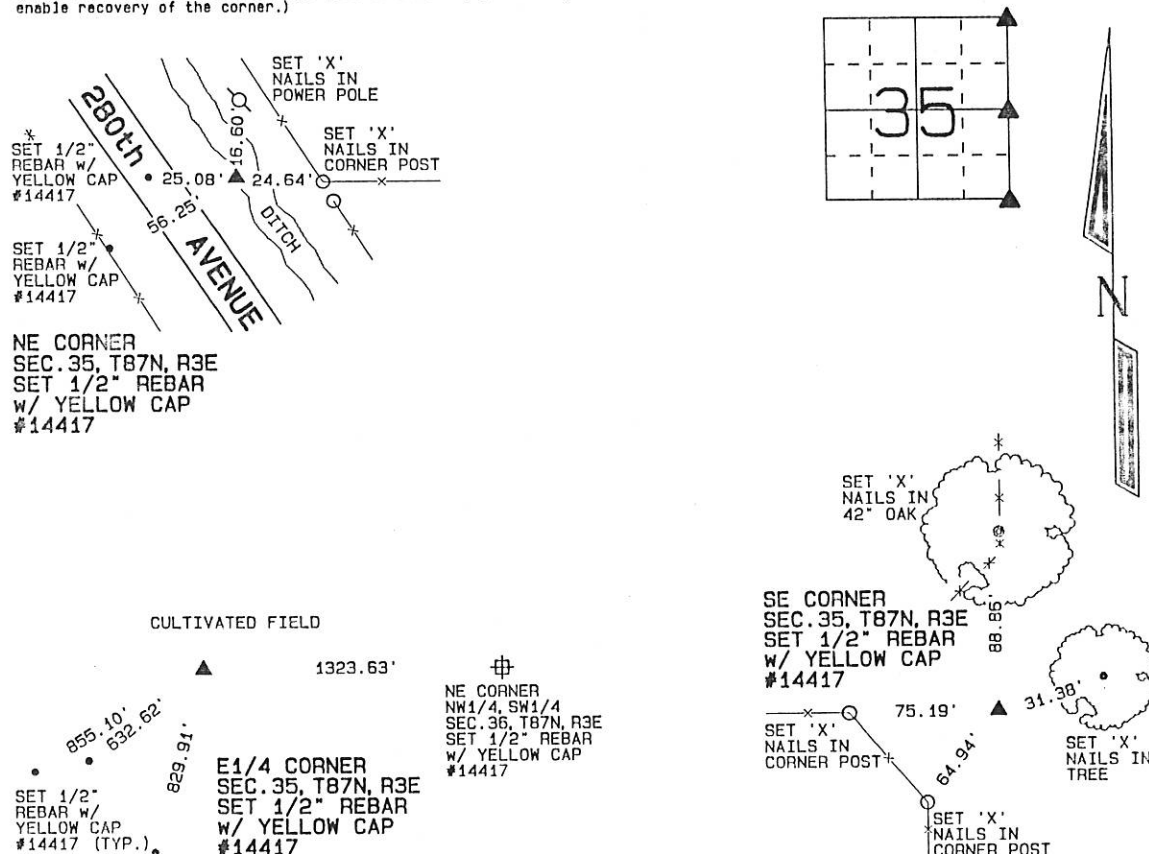
Land Survey Monuments situated in Section 35, Township 87 North, Range 3 East of the Fifth Principal Meridian, Jackson County, Iowa.  
Previously recorded (NONE OF RECORD)

(Show reason for preparing this certificate, the evidence and detailed procedures used in establishing the corner positions and monumentation found or placed.)

Monument Description and Remarks: THE NE CORNER OF SEC. 35, T87N, R3E WAS ESTABLISHED BY 38 LINKS EAST OF THE CENTERLINE OF THE ROAD AND IN LINE WITH THE OCCUPATION FENCE LOCATED TO THE EAST OF THE CORNER. THE E1/4 CORNER OF SEC. 35, T87N, R3E WAS ESTABLISHED MIDWAY BETWEEN THE NE AND SE CORNERS OF SECTION 35 IN COMBINATION WITH THE DEED DESCRIPTIONS NORTH OF THE CORNER. THE SE CORNER OF SEC. 35, T87N, R3E WAS ESTABLISHED 95 LINKS EAST OF THE NW CORNER OF SECTION 1 AS OCCUPIED.

### PLAN - VIEW

(Show a minimum of three reference ties to durable physical objects, relevant monuments and physical conditions that will enable recovery of the corner.)



I hereby certify that this land surveying document was prepared and the related survey work was performed by me or under my direct personal supervision and that I am a duly licensed Land Surveyor under the laws of the State of Iowa.

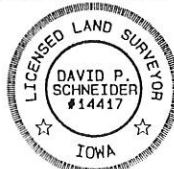
*David P. Schneider* 6/16/2004  
David P. Schneider P.L.S. #14417 Date:  
My license renewal date is December 31, 2005.

Pages or sheets covered by this seal: THIS SHEET ONLY

**SCHNEIDER**

Land Surveying & Planning, Inc.

P.O. Box 128 Farley, Iowa 52046  
Ph. #563-744-3631 Fax #563-744-3629



#### List Corners to be Indexed

| Corners     | Section | Twp | Range |
|-------------|---------|-----|-------|
| NE CORNER   | 35      | 87N | 3E    |
| E1/4 CORNER | 35      | 87N | 3E    |
| SE CORNER   | 35      | 87N | 3E    |

JOB NO. 64BSCC