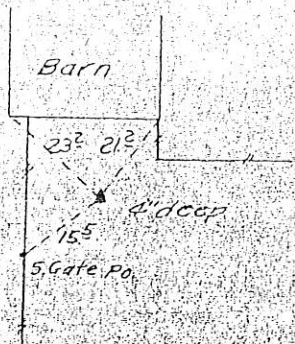


A hand-drawn map showing a survey area. A horizontal line represents a boundary or road. Point A is marked on this line, with a yellow highlight. Point B is marked to the right of A, also with a yellow highlight. Point 33 is circled in the upper right quadrant. Various numerical annotations are present: 1253, 2673, 186125, 81124, 1324, 100, 114, 15, 16, 17, and 18. A dashed line connects point A to a point labeled 100. A vertical line passes through point A. A horizontal line passes through point B. A vertical line passes through point 33. A dashed line passes through point 18.

Distances were measured carefully and may not agree exactly with road stationing. For complete information on this survey, see field notes filed in Ames office.

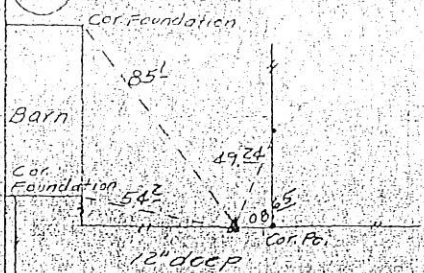


14 NE Cor Sec 5-86-3E



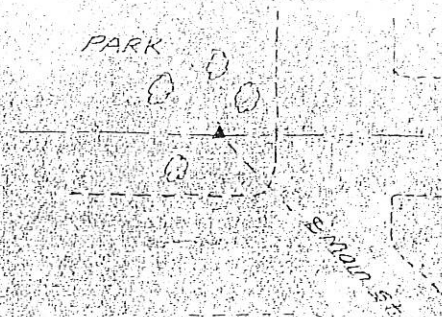
Found 9/8" x 1 1/2" Iron Pipe in pile of rock.  
Set 4" x 4" x 18" Concrete, 1/2" iron pin encased

15 SE Cor Sec 32-87-3E



Set 3" x 11" x 15" Lime Stone  
over 1 1/2" x 22 1/2" Gas Pipe

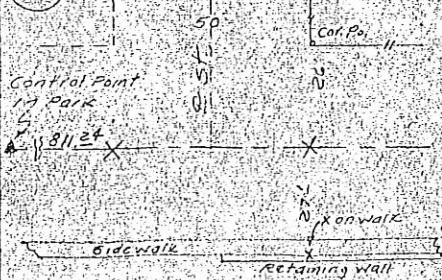
16 Control Stone on S. line of Sec 33-87-3E



Found 6" ø Soil pipe  
10' below see road plans

17 N 1/4 Cor Sec 4-86-3E

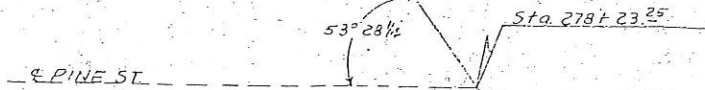
18 S 1/4 Cor Sec 33-87-3E



Did not find or set

B

PI Sta 275+34.8  
Δ: 52° 55 1/2'



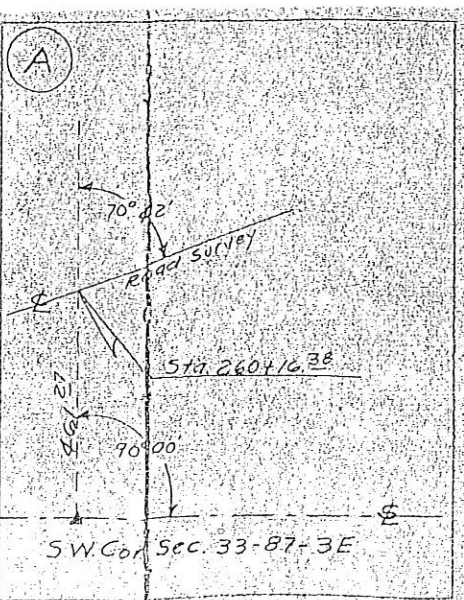
PI Sta 272+36.55  
Δ: 36° 59 1/2'

1706.87 To SW Cor Sec 33-87-3E

Sta 260+55.37

Control Stone

A



SW Cor Sec 33-87-3E

00 0775

FILE NO. \_\_\_\_\_  
BOOK \_\_\_\_\_ PAGE 421

00 MAR -8 AM 10:15

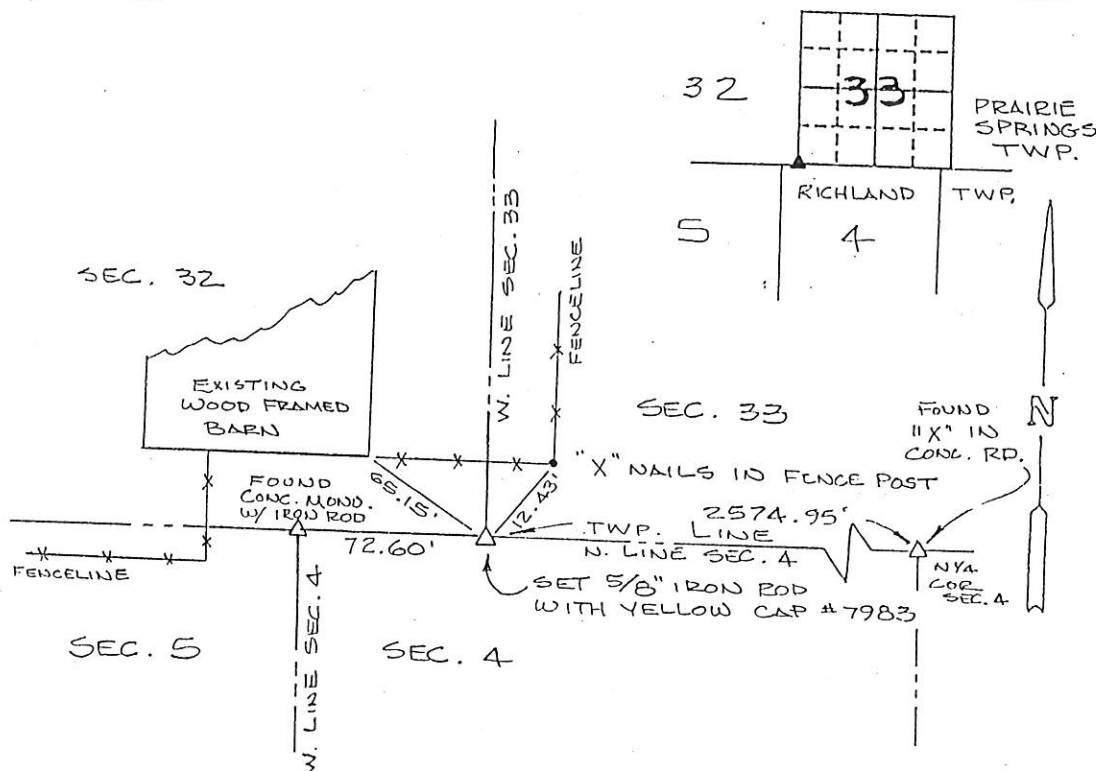
UNITED STATES PUBLIC LAND SURVEY CORNER CERTIFICATE  
OFPHYLLIS M. GERLACH  
JACKSON COUNTY, IOWA  
RECORDERLand Survey Monuments situated in Section 33, Township 87N, Range 3E, of the Fifth Principal Meridian, JACKSON County, Iowa. Previously recorded in NONE OF RECORD in County Recorder's Office.

(Show reason for preparing this certificate, the evidence and detailed procedures used in establishing the corner positions and monumentation found or placed.)

Monument Description and Remarks: THIS MONUMENT IS NOTED ON THE PLAT OF THE ORIGINAL TOWN OF LANOTTE, IOWA, TO BE 72.60' EAST OF THE NW CORNER OF SEC. 4 - T86N-R3E. WE FOUND THE NW COR. OF SEC. 4, AND THE NYA CORNER OF SEC. 4. THEN THE SW CORNER OF SEC. 33 WAS PLACED ON LINE AND 72.60' EAST OF THE NW COR. OF SEC. 4

## PLAN - VIEW

(Show a minimum of three reference ties to durable physical object, relevant monuments and physical conditions that will enable recovery of the corner.)



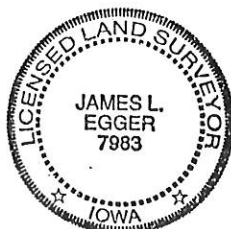
I hereby certify that the survey work was completed and this certificate was prepared by me or under my direct supervision and that I am a duly registered land surveyor under the laws of the state of Iowa.

Signature: \_\_\_\_\_

James L. Egger L.S.

Date: MAR. 7, 2000 Reg. No. 7983

SEAL



Corners	Section	Twp	Range
SW COR.	33	87N	3E



Document 05-2384

Book 2 Page 363 Type 06 023 Pages 1  
Date 6/16/2005 Time 11:11 AM  
Rec Amt \$7.00

PHYLLIS M. GERLACH, RECORDER  
JACKSON COUNTY IOWA

Prepared by: SCHNEIDER Land Surveying and Planning, Inc. P.O. Box 128 Farley, Iowa 52046 563-744-3631

## UNITED STATES PUBLIC LAND SURVEY CORNER CERTIFICATE OF

Land Survey Monuments situated in Section 33, Township 87 North, Range 3 East of the Fifth Principal Meridian, Jackson County, Iowa.  
Previously recorded (NONE OF RECORD)

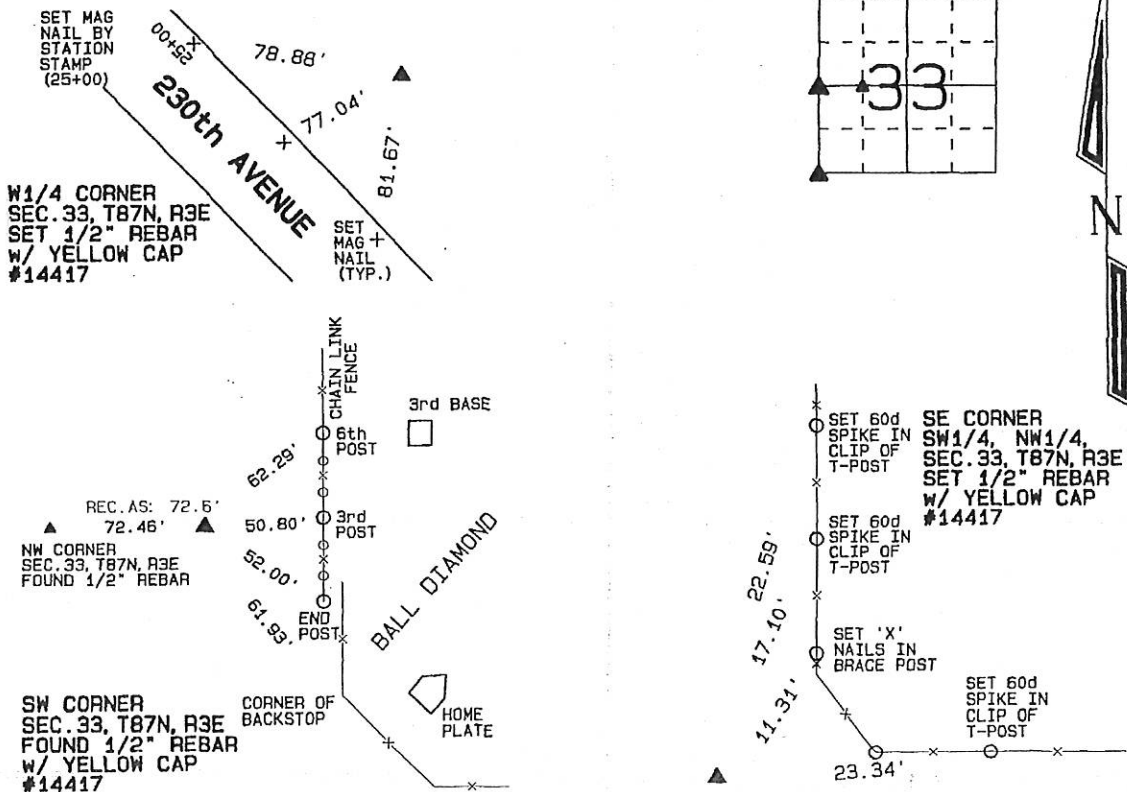
(BOOK, PAGE / INST. NO. / CABINET, SLIDE)

(Show reason for preparing this certificate, the evidence and detailed procedures used in establishing the corner positions and monumentation found or placed.)

Monument Description and Remarks: A 1/2" REBAR w/ CAP #14417 WAS FOUND AT THE SW CORNER OF SECTION 33, T87N, R3E. THE CORNER WAS PREVIOUSLY TIED AS A 5/8" REBAR w/ YELLOW CAP #7983 IN S.C.C. BOOK 1, PAGE 421. THE REBAR WAS REMOVED WHEN A PARK AND BALL DIAMOND WERE BUILT. THE 1/2" REBAR WAS TIED AND USED AS THE SW CORNER. THE SE CORNER OF THE SW1/4 OF THE NW1/4 OF SECTION 33, T87N, R3E WAS ESTABLISHED BY USING OCCUPATION EVIDENCE TO THE NORTH AND EAST AND ON A LINE FROM THE NW1/4 CORNER TO THE CENTER OF SAID SECTION 33. THE NW1/4 CORNER OF SECTION 33, T87N, R3E WAS ESTABLISHED ON A LINE FROM THE NW CORNER TO THE SW CORNER OF SAID SECTION 33 AND IN LINE WITH OCCUPATION EVIDENCE TO THE EAST AND WEST.

### PLAN - VIEW

(Show a minimum of three reference ties to durable physical objects, relevant monuments and physical conditions that will enable recovery of the corner.)



I hereby certify that this land surveying document was prepared and the related survey work was performed by me or under my direct personal supervision and that I am a duly licensed Land Surveyor under the laws of the State of Iowa.

David P. Schneider P.L.S. #14417 Date: 6/15/2005  
My license renewal date is December 31, 2005.  
Pages or sheets covered by this seal: THIS SHEET ONLY

**SCHNEIDER**  
Land Surveying & Planning, Inc.  
P.O. Box 128 Farley, Iowa 52046  
Ph. #563-744-3631 Fax #563-744-3629



#### List Corners to be Indexed

Corners	Section	Twp	Range
SW	33	87N	3E
W1/4	33	87N	3E
SE COR. SW1/4, NW1/4	33	87N	3E

JOB NO. 770

Document 05-4509

Book 2 Page 396 Type 06 023 Pages 1  
Date 11/07/2005 Time 9:38 AM  
Rec Amt \$7.00

PHYLLIS M. GERLACH, RECORDER  
JACKSON COUNTY IOWA

Prepared by: SCHNEIDER Land Surveying and Planning, Inc. P.O. Box 128 Farley, Iowa 52046 563-744-3631

## UNITED STATES PUBLIC LAND SURVEY CORNER CERTIFICATE OF

Land Survey Monuments situated in Section 33, Township 87 North, Range 3 East  
of the Fifth Principal Meridian, Jackson County, Iowa.

Previously recorded \_\_\_\_\_ (NONE OF RECORD)

(BOOK, PAGE / INST. NO. / CABINET, SLIDE)

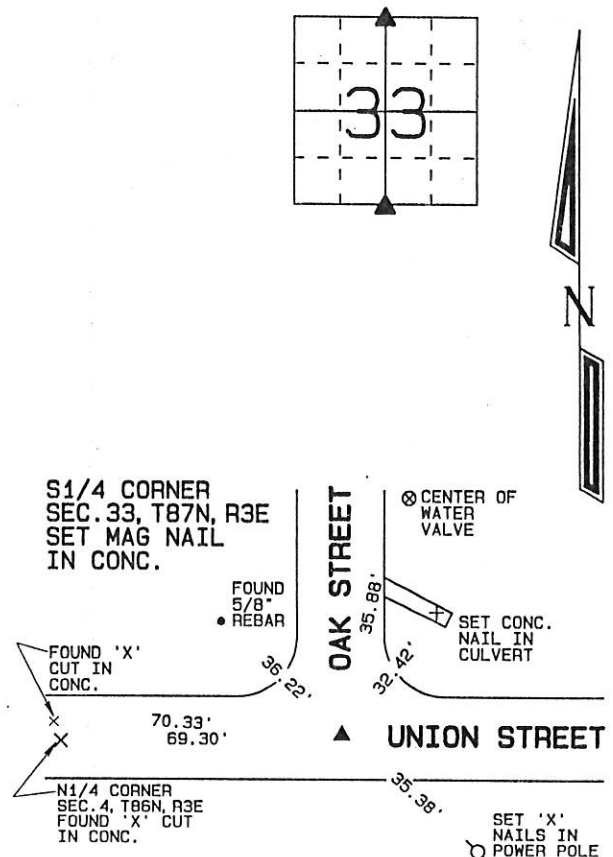
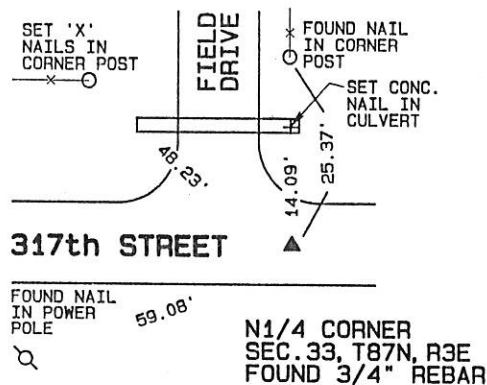
(Show reason for preparing this certificate, the evidence and detailed procedures used in establishing the corner positions and monumentation found or placed.)

Monument Description and Remarks: A 3/4" REBAR WAS FOUND AT THE N1/4 CORNER OF SECTION 33, T87N, R3E.  
THE REBAR WAS TIED AND USED AS THE N1/4 CORNER.

THE S1/4 CORNER OF SECTION 33, T87N, R3E WAS ESTABLISHED 69.3 FEET EAST OF THE N1/4 CORNER OF SECTION 4, T86N, R3E AND IN THE CENTERLINE OF UNION STREET AS INDICATED ON THE ORIGINAL TOWN OF LaMOTTE, IOWA. THE POSITION LOOKED GOOD IN RELATIONSHIP TO OCCUPATION EVIDENCE ALL THE WAY AROUND THE SECTION CORNER.

PLAN - VIEW

(Show a minimum of three reference ties to durable physical objects, relevant monuments and physical conditions that will enable recovery of the corner.)



I hereby certify that this land surveying document was prepared and the related survey work was performed by me or under my direct personal supervision and that I am a duly licensed Land Surveyor under the laws of the State of Iowa.

David P. Schneider P.L.S. #14417

Date:

My license renewal date is December 31, 2005.

Pages or sheets covered by this seal: THIS SHEET ONLY

## List Corners to be Indexed

Corners	Section	Twp	Range
N1/4	33	87N	3E
S1/4	33	87N	3E

**SCHNEIDER**  
Land Surveying & Planning, Inc.



Book 2 Page 396