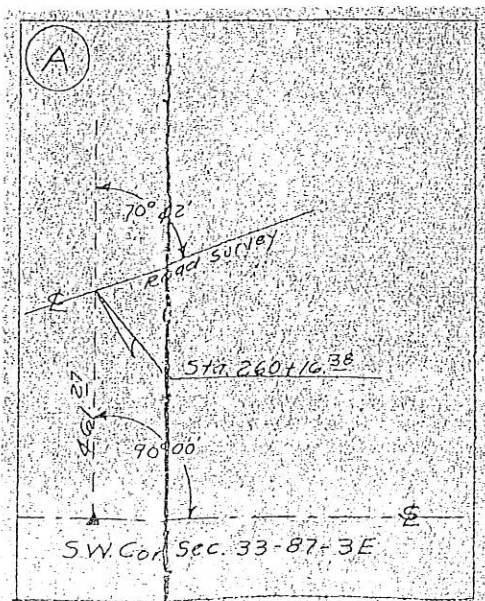
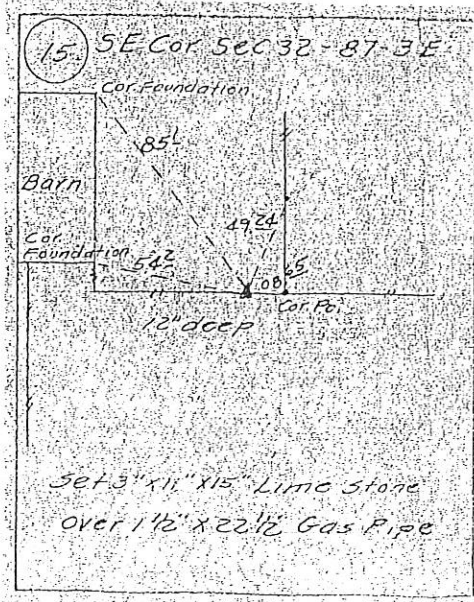
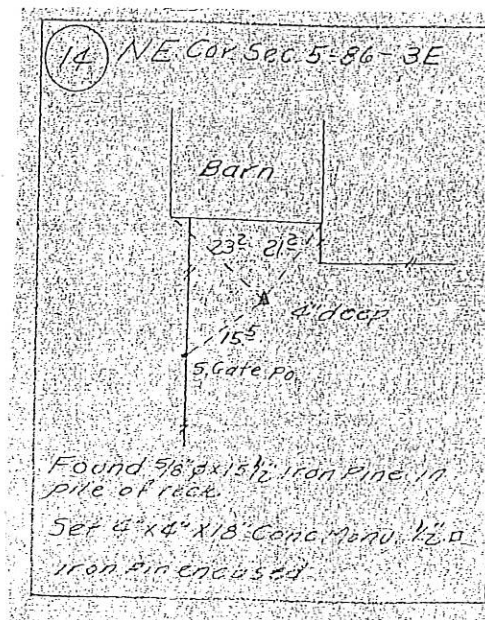
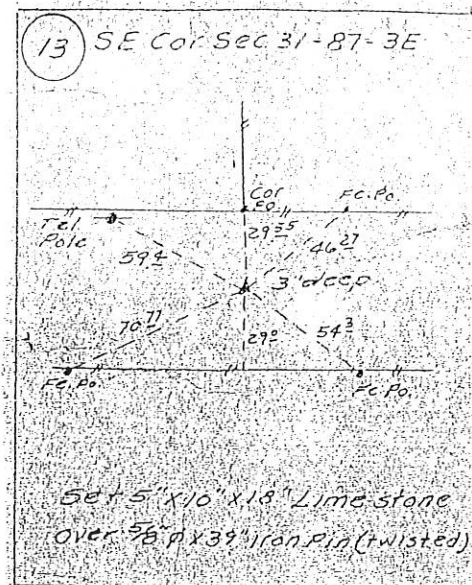
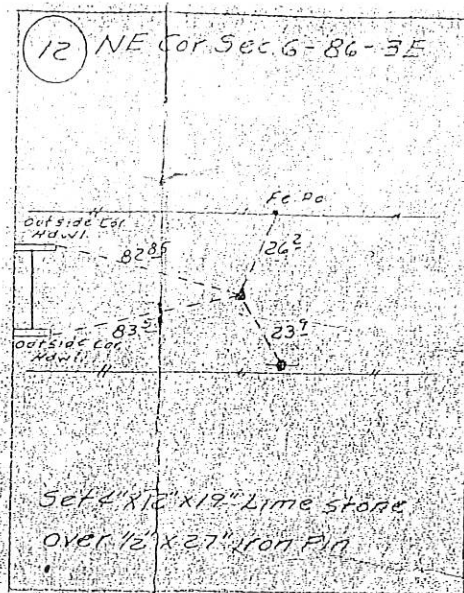


9.55
10.10
20.50
10.51
SURVEY



UNITED STATES PUBLIC LAND SURVEY CORNER CERTIFICATE

OF

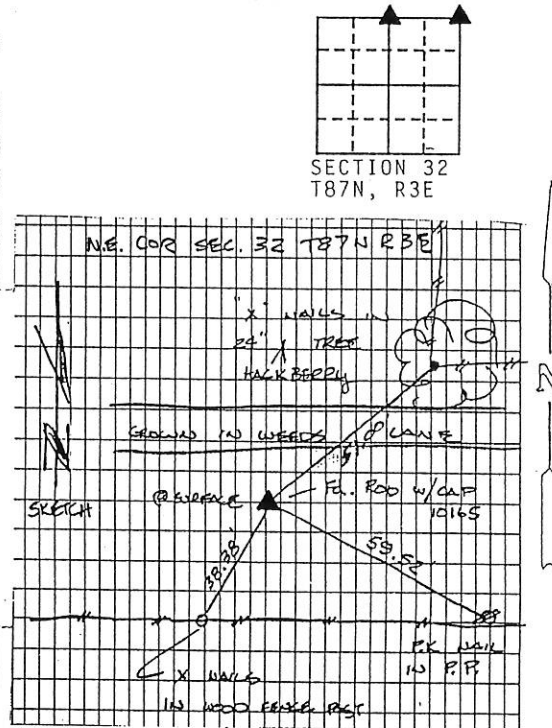
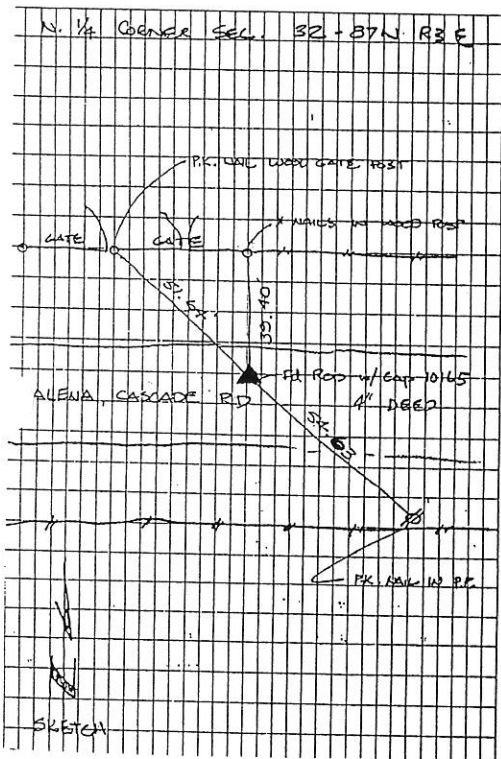
Land Survey Monuments situated in Section 32, Township 87 North, Range Three (3) East, of the Fifth Principal Meridian, Jackson County, Iowa.
Previously recorded in --- in County Recorder's Office.

(Show reason for preparing this certificate, the evidence and detailed procedures used in establishing the corner positions and monumentation found or placed.)

Monument Description and Remarks: No certificate of record. Found 1/2" diameter
iron rods with RLS Cap No. 10165 at NE and N 1/4 Corners. Reference
Plat Book 1 - G, Page 48.

PLAN - VIEW

(Show a minimum of three reference ties to durable physical objects, relevant monuments and physical conditions that will enable recovery of the corner.)



DATE OF FIELD WORK: 10/1/91

TSE NO: 91-59

I hereby certify that the survey work was completed and this certificate was prepared by me or under my direct personal supervision and that I am a duly registered land surveyor under the laws of the state of Iowa.

Signature: [Handwritten Signature]
Name typed or printed: J. David Gibbs

Date: 10/4/91 Reg. No. 8419



SEAL

Corners	List Corners to be Indexed		Range
	Section	Twp	
NE	32	87	3E
N 1/4	32	87	3E

FILE NO. 1003
BOOK 1 PAGE 60

1991 OCT 22 PM 1:04

SHIRLY RITENOUR -
JACKSON COUNTY, IOWA
RECORDER

BOOK 1 PAGE 60

5-9-03 Ma Lamer Certificate file # 03-2840 in Book 2 Page 162

FILE NO. 005419
BOOK 395 PAGE 395

1996 DEC 16 AM 9:44

SHIRLY RITENOUR
JACKSON COUNTY, IOWA
RECORDER

Jul 6⁰⁰

Wm. Burger Land Surveyors - 510 3rd St. West Court - Worthington, Iowa - Phone 319 855 2028

UNITED STATES PUBLIC LAND SURVEY CORNER CERTIFICATE

OF

Land Survey Monuments situated in Section 32, Township 87 NORTH, Range THREE EAST, of the Fifth Principal Meridian, JACKSON County, Iowa.
Previously recorded in DOES NOT APPLY (book, page, document number, etc.) in County Recorder's Office.

(Show reason for preparing this certificate, the evidence and detailed procedures used in establishing the corner positions and monumentation found or placed.)

Monument Description and Remarks: NO CERTIFICATES FOUND AT COUNTY RECORDERS OFFICE

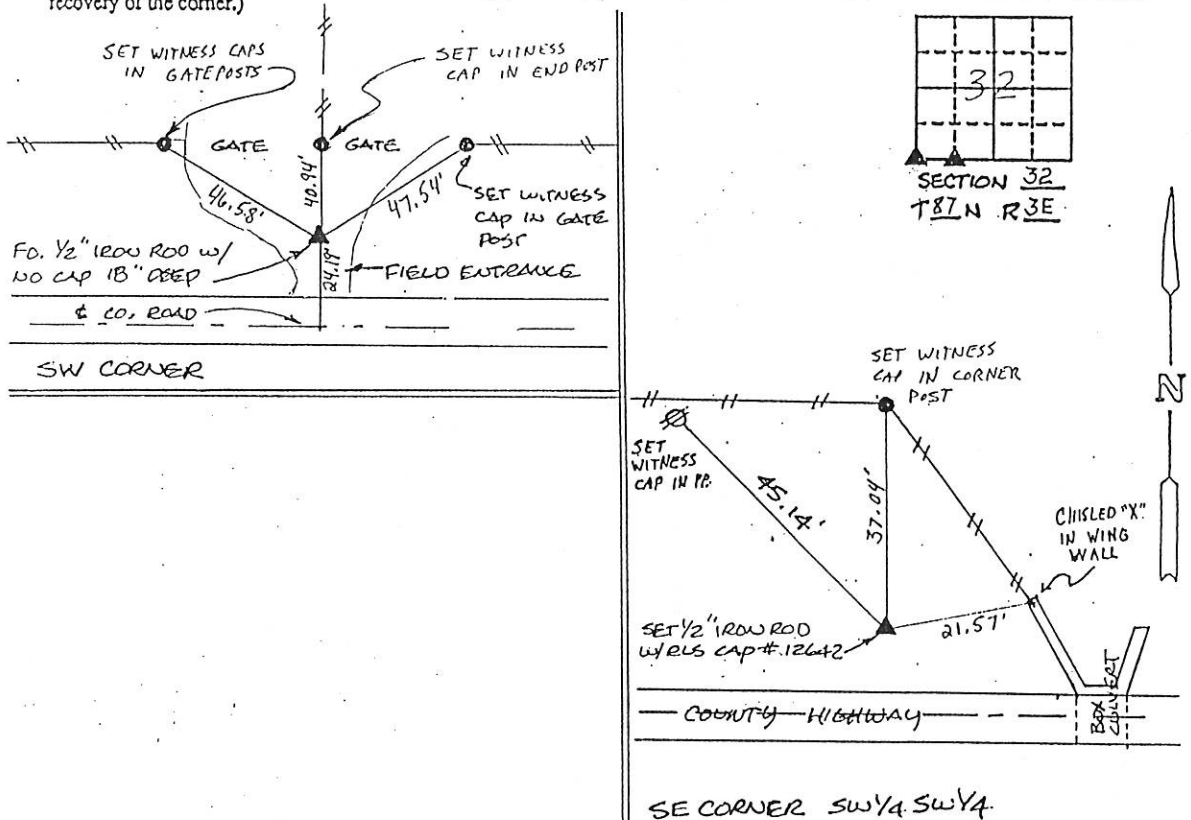
SW Corner- Used information from I.D.O.T. R.O.W. plats & found 5/8"

iron rod 18" deep.

SE Corner, SW 1/4, SW 1/4- Used information from I.D.O.T. R.O.W. plats
and reestablished corner. Set 1/2" iron rod w/ RLS cap #12642.

PLAN - VIEW

(Show a minimum of three reference ties to durable physical objects, relevant monuments and physical conditions that will enable recovery of the corner.)



I hereby certify that the survey work was completed and this certificate was prepared by me or under my direct personal supervision and that I am a duly registered land surveyor under the laws of the state of Iowa.

Signature: William H. Burger
Name typed or printed: WILLIAM H. BURGER

Date: 12/11/96

Corners	List Corners to be Indexed	Section	Twp	Range
SW CORNER	32	87N	3E	
SE CORNER, SW 1/4 SW 1/4	32	87N	3E	



Reg. No. 12642

FILE NO 03-2840
PAGE 162

03 MAY -9 AM 11:14

PHYLLIS M. GERLACH
JACKSON COUNTY, IOWA
RECORDER

PREPARED BY: MICHAEL J. WEBER, BUESING & ASSOCIATES, 1212 LOCUST STREET, DUBUQUE, IOWA, 52001, PH: (563) 556-4389

UNITED STATES PUBLIC LAND SURVEY CORNER CERTIFICATE OF

LAND SURVEY MONUMENTS SITUATED IN SECTION 32, TOWNSHIP 87 NORTH, RANGE 3 EAST
OF THE FIFTH PRINCIPAL MERIDIAN, JACKSON COUNTY, IOWA.
PREVIOUSLY RECORDED IN BK 1, PG 60 IN COUNTY RECORDER'S OFFICE.
(book, page, document number, etc.)

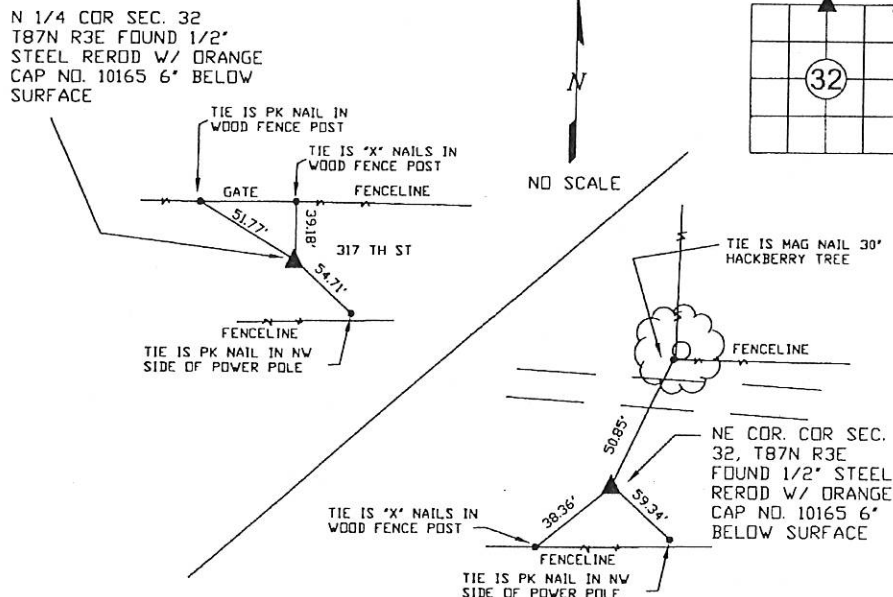
(Show reason for preparing this certificate, the evidence and detailed procedures used in establishing the corner positions and monumentation found or placed.)

Monument Description and Remarks:

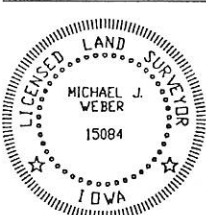
* NE COR. SEC. 32, T87N R3E FOUND 1/2" STEEL ROD WITH ORANGE PLASTIC CAP NO. 10165 12" FLUSH WITH SURFACE,
* N 1/4 SEC. 32, T87N R3E FOUND 1/2" STEEL ROD WITH ORANGE PLASTIC CAP NO. 10165 6" BELOW SURFACE, BOTH CORNER ESTABLISHED BY PLAT BOOK 1-G, PAGE 48

PLAN - VIEW

(Show a minimum of three reference ties to durable physical objects, relevant monuments and physical conditions that will enable recovery of the corner.)



NOTES:
1. ALL MEASUREMENTS ARE IN FEET AND DECIMALS THEREOF.
2. ALL MEASUREMENTS ARE HORIZONTAL.



I HEREBY CERTIFY THAT THIS LAND SURVEYING DOCUMENT WAS PREPARED AND THE RELATED SURVEY WORK WAS PERFORMED BY ME OR UNDER MY DIRECT PERSONAL SUPERVISION AND THAT I AM A DULY LICENSED LAND SURVEYOR UNDER THE LAWS OF THE STATE OF IOWA.

Michael J. Weber 6 May 2003
MICHAEL J. WEBER DATE
LICENSE NUMBER 15084
MY LICENSE RENEWAL DATE IS DECEMBER 31, 2003

Corners	Section	Twp	Range
NE COR.	32	87N	3E
N 1/4	32	87N	3E

BUESING & ASSOCIATES
CONSULTING ENGINEERS
1212 LOCUST STREET
DUBUQUE, IOWA 52001
(563) 556-4389

MONUMENT RECORD

COUNTY: JACKSON
TOWNSHIP: PRAIRIE SPRINGS T87N R3E

FIELD BOOK # 163
PAGE #

DRAWING NO.
02257-SEC-TIE



Document 08-4252

Book 2 Page 641 Type 15 001 Pages 1
Date 11/14/2008 Time 9:40 AM
Rec Amt \$7.00

ARLENE SCHAUF, RECORDER/REGISTRAR
JACKSON COUNTY IOWA

PREPARED BY: MICHAEL J. WEBER, WEBER SURVEYING, LLC, 26789 46TH AVE, BERNARD, IA 52032 (563) 879-4173

UNITED STATES PUBLIC LAND SURVEY CORNER CERTIFICATE OF

LAND SURVEY MONUMENTS SITUATED IN SECTION 32, TOWNSHIP 87 NORTH, RANGE 3 EAST
OF THE FIFTH PRINCIPAL MERIDIAN, JACKSON COUNTY, IOWA.
PREVIOUSLY RECORDED NONE UNLESS OTHERWISE NOTED

(book, page, document number, etc.)

(Show reason for preparing this certificate, the evidence and detailed procedures used in establishing the corner positions and monumentation found or placed.)

Monument Description and Remarks:

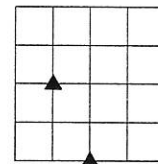
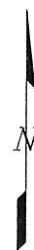
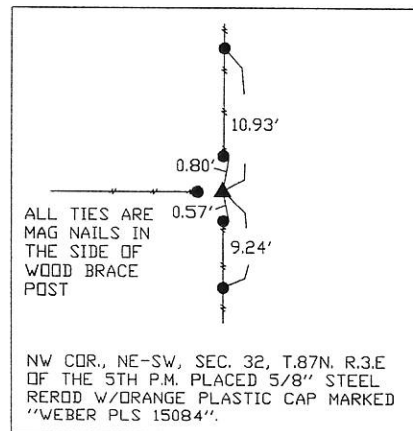
REASON: PLAT OF SURVEY OF PARCEL C IN SECTION 32, T.87N R.3E. OF THE 5TH P.M. WAS PREPARED SHOWING THE FOLLOWING CORNER

NW COR., NE-SW, SEC. 32, T.87N. R.3.E OF THE 5TH P.M. PLACED 5/8" STEEL REROD W/ORANGE PLASTIC CAP MARKED "WEBER PLS 15084". ESTABLISHED CORNER ONLINE BETWEEN THE W 1/4 AND THE E 1/4 OF SAID SECTION 32 AND AT THE INTERSECTION OF OCCUPATION FENCE RUNNING NORTH, SOUTH AND WEST.

S 1/4 COR. SEC. 32, T.87N. R.3.E OF THE 5TH P.M. PLACED 5/8" STEEL REROD W/ORANGE PLASTIC CAP MARKED "WEBER PLS 15084" ESTABLISHED CORNER MIDWAY AND ONLINE BETWEEN THE SW AND SE CORNER OF SAID SECTION 32

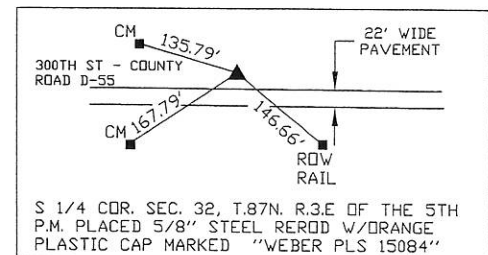
PLAN - VIEW

(Show a minimum of three reference ties to durable physical objects, relevant monuments and physical conditions that will enable recovery of the corner.)

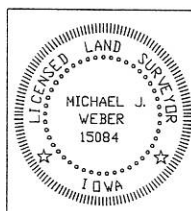


▲ UNITED STATES PUBLIC LAND CORNER
DESCRIPTION AS NOTED

CM ■ CM=CONCRETE MONUMENT W/ 1/2"
OR 5/8" ROD



DWG. NO. WAITE



I HEREBY CERTIFY THAT THIS LAND SURVEYING DOCUMENT WAS
PREPARED AND THE RELATED SURVEY WORK WAS PERFORMED BY ME OR
UNDER MY DIRECT PERSONAL SUPERVISION AND THAT I AM A DULY
LICENSED LAND SURVEYOR UNDER THE LAWS OF THE STATE OF IOWA.

Michael J. Weber October 21, 2008
MICHAEL J. WEBER (DATE)
LICENSE NUMBER 15084
MY LICENSE RENEWAL DATE IS DECEMBER 31, 2009

SHEETS COVERED BY THIS SEAL: This Sheet

List Corners to be Indexed
Corner Sec Twp Range
NW Corner of 32 87N 3E
the NE-SW
S 1/4 32 87N 3E

Book 2 Page 641