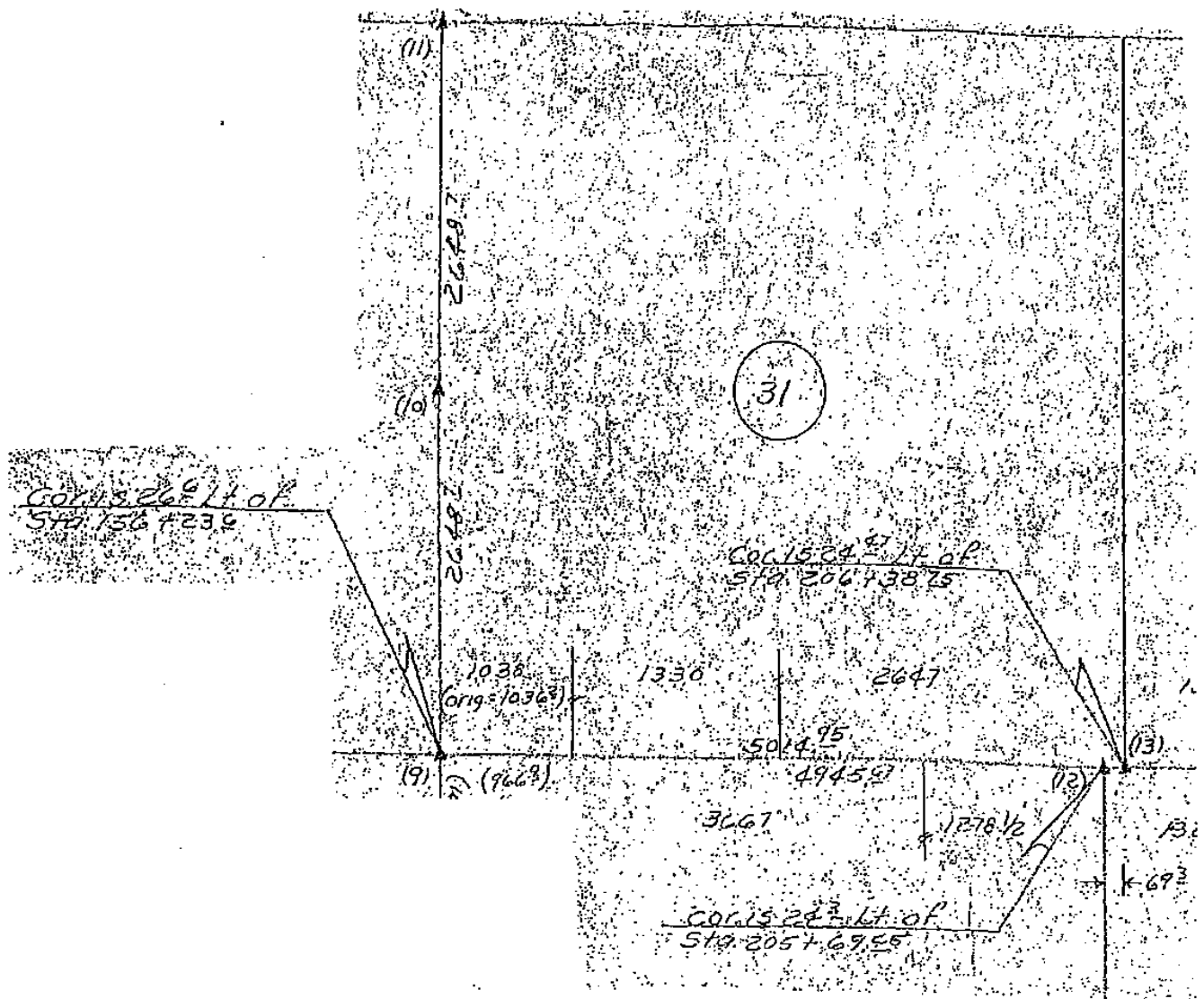
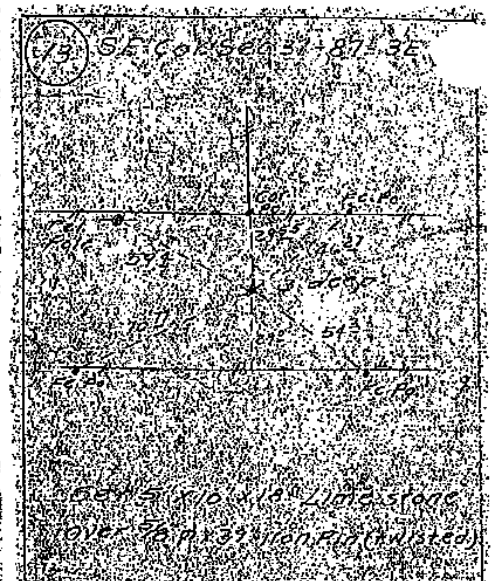
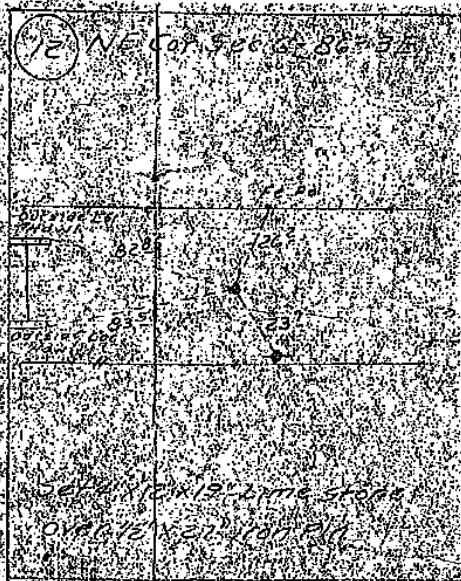
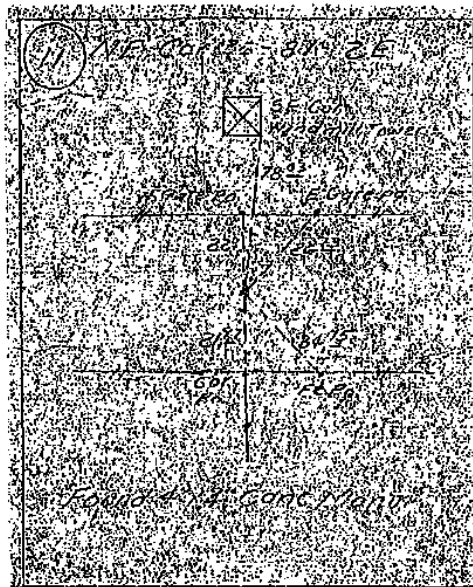
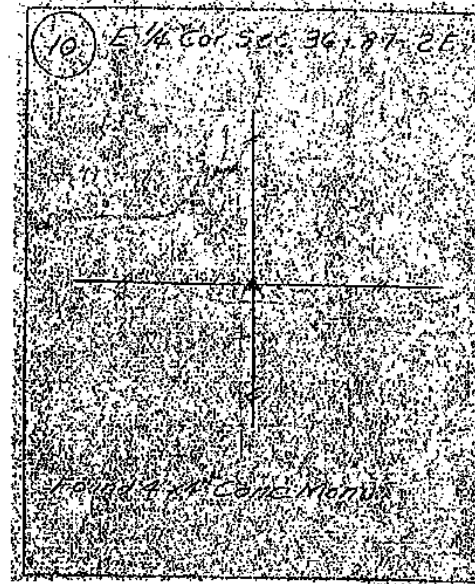
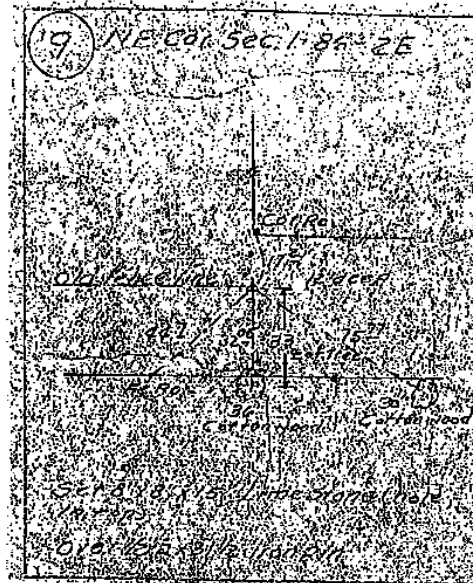


Sec. 31



LAND CORNER SURVEY
DUBUQUE Co JACKSON Co
T. 86. 37N R. 2. 31E
MADE FOR
IOWA STATE HIGHWAY COMMISSION
FOR ROAD DESCRIPTIONS
Z WINGLE TO LAMOTTE PROJECT, PA. 838
MADE BY
John D. Franklin R. L. S. No. 2051
AUGUST 1948
Distances were measured carefully and may not
agree exactly with road staking. For complete
information on this survey see field notes filed
in files at the





Document 06-3873

Book 2 Page 485 Type 15 001 Pages 1

Date 10/06/2006 Time 8:31 AM

Rec Amt \$7.00

ARLENE SCHAUF, RECORDER
JACKSON COUNTY IOWA

Prepared by: SCHNEIDER Land Surveying and Planning, Inc. P.O. Box 128 Farley, Iowa 52046 563-744-3631

UNITED STATES PUBLIC LAND SURVEY CORNER CERTIFICATE OF

Land Survey Monuments situated in Section 31, Township 87 North, Range 3 East of the Fifth Principal Meridian, Jackson County, Iowa.

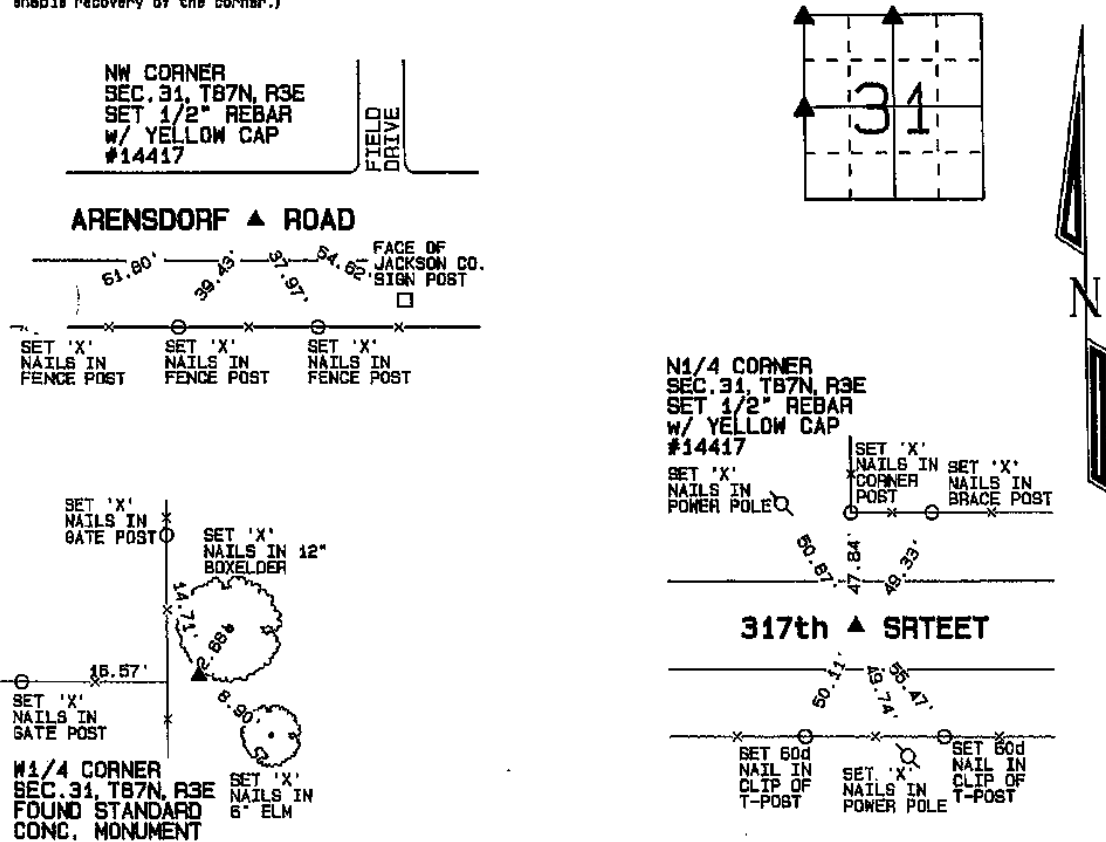
Previously recorded (NONE OF RECORD)

(Show reason for preparing this certificate, the evidence and detailed procedures used in establishing the corner positions and monumentation found or placed.)

Monument Description and Remarks: THE N1/4 CORNER OF SECTION 31, T87N, R3E WAS ESTABLISHED ON THE CENTERLINE OF THE COUNTY ROAD AND AT A PROPORTIONED DISTANCE ALONG THE NORTH LINE OF SAID SECTION 31. THE NW CORNER OF SECTION 31, T87N, R3E WAS ESTABLISHED IN LINE WITH THE MONUMENTS ILLUSTRATED ON A PLAT FILED IN DUBUQUE COUNTY AS INST. NO. 2794-77 AND BY DOUBLING THE DISTANCE FROM THE N1/4 CORNER OF SECTION 36, T87N, R2E THROUGH THE NW CORNER OF THE NE1/4 OF THE NE1/4 OF SAID SECTION 36 AS FENCED AND OCCUPIED. A STANDARD CONCRETE MONUMENT WAS FOUND AT THE N1/4 CORNER OF SECTION 31, T87N, R3E AS INDICATED ON I.O.D.T. REFERENCE TIES.

PLAN - VIEW

(Show a minimum of three reference ties to durable physical objects, relevant monuments and physical conditions that will enable recovery of the corner.)



I hereby certify that this land surveying document was prepared and the related survey work was performed by me or under my direct personal supervision and that I am a duly licensed Land Surveyor under the laws of the State of Iowa.

David P. Schneider 10/2/2006
David P. Schneider P.L.S. #14417 Date:
My license renewal date is December 31, 2007.

Pa sheets covered by this seal: THIS SHEET ONLY

SCHNEIDER
Land Surveying & Planning, Inc.
P.O. Box 128 Farley, Iowa 52046
Ph. #563-744-3631 Fax #563-744-3629



List Corners to be Indexed

Corners	Section	Twp	Range
N1/4	31	87N	3E
NW	31	87N	3E
N1/4	31	87N	3E

Document 23-1160

Type 15 001 Pages 1
Date 5/05/2023 Time 2:28 PM
Rec Amt \$7.00

ARLENE SCHAUF, RECORDER/REGISTRAR
JACKSON COUNTY IOWA

PREPARED BY: MICHAEL J. WEBER, WEBER SURVEYING, LLC, 26789 46TH AVE, BERNARD, IA 52032 (563) 879-4173

UNITED STATES PUBLIC LAND SURVEY CORNER CERTIFICATE OF

LAND SURVEY MONUMENTS SITUATED IN SECTION 31, TOWNSHIP 87 NORTH, RANGE 3 EAST
OF THE FIFTH PRINCIPAL MERIDIAN, JACKSON COUNTY, IOWA.
PREVIOUSLY RECORDED NONE

(book, page, document number, etc.)

(Show reason for preparing this certificate, the evidence and detailed procedures used in establishing the corner positions and monumentation found or placed.)

Monument Description and Remarks:

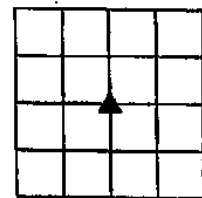
-CENTER SEC. 31, T87N R3E OF THE 5TH P.M. PLACED 5/8" DIA REROD W/DRABGE CAP NO. 15084.
ESTABLISHED CORNER AT THE INTERSECTION OF OCCUPATION FENCE LINE RUNNING EAST WEST & SOUTH

(Show a minimum of three reference ties to durable physical objects, relevant monuments and physical conditions that will enable recovery of the corner.)

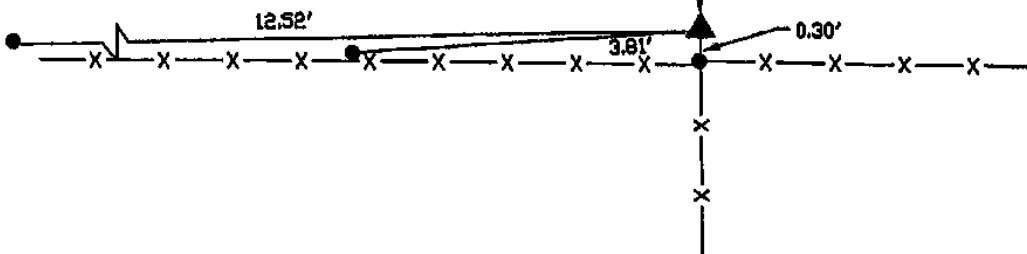
PLAN - VIEW

CENTER SEC. 31, T87N R3E
OF THE 5TH P.M. PLACED
5/8" DIA REROD W/DRABGE
CAP NO. 15084

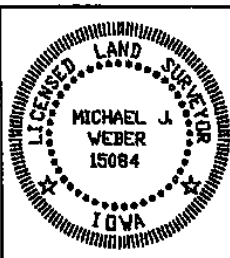
ALL TIES
ARE MAG
NAIL SET IN
THE SIDE OF
WOOD POST



DRAWING NOT TO SCALE



DWG. NO. 23055-ALTHOFF



I HEREBY CERTIFY THAT THIS LAND SURVEYING DOCUMENT WAS
PREPARED AND THE RELATED SURVEY WORK WAS PERFORMED BY ME OR
UNDER MY DIRECT PERSONAL SUPERVISION AND THAT I AM A DULY
LICENSED LAND SURVEYOR UNDER THE LAWS OF THE STATE OF IOWA.

Michael J. Weber *May 5, 2023*
MICHAEL J. WEBER (DATE)

LICENSE NUMBER 15084

MY LICENSE RENEWAL DATE IS DECEMBER 31, 2023

SHEETS COVERED BY THIS SEAL : THIS SHEET

List Corners to be Indexed	
Corner	Sec Twp Range
CENTER	31 87N 3E



Document 23-1262

Type 15 001

Pages 2

Date 5/17/2023 Time 11:36 AM

Rec Amt \$12.00

ARLENE SCHAUF, RECORDER/REGISTRAR
JACKSON COUNTY IOWA

PREPARED BY: ORIGIN DESIGN CO. 137 MAIN STREET, SUITE 100 DUBUQUE, IOWA (563) 556-2464

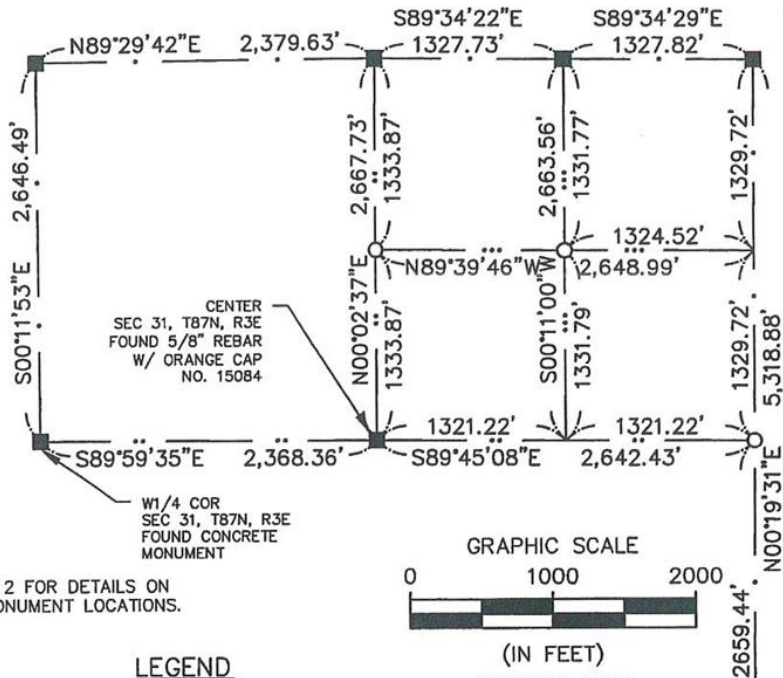
UNITED STATES PUBLIC LAND SURVEY CORNER CERTIFICATE OF

LAND SURVEY MONUMENTS SITUATED IN SECTION 31, TOWNSHIP 87 NORTH, RANGE 3 EAST
OF THE FIFTH PRINCIPAL MERIDIAN, JACKSON COUNTY, IOWA.

PREVIOUSLY RECORDED IN 005419 & 06-3873 IN COUNTY RECORDER'S OFFICE.

MONUMENT DESCRIPTION AND REMARKS: A CONCRETE MONUMENT WAS FOUND AT THE W1/4 AS INDICATED ON
06-3873. THE SE CORNER WAS SET USING LONG STANDING FENCE LINE TO THE NORTH FOR E-W LOCATION AND
ONLY FOUND WITNESS MONUMENT FOR N-S LOCATION. NO RECORD OF THE E1/4 WAS FOUND AT THE COUNTY
RECORDERS OFFICE. E1/4 SET USING SINGLE PROPORTIONATE METHOD BETWEEN SE AND NE CORNERS.

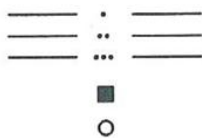
SECTION BREAKDOWN



NOTE

SEE SHEET 2 FOR DETAILS ON
WITNESS MONUMENT LOCATIONS.

LEGEND



SECTION LINE
QUARTER SECTION LINE
QUARTER QUARTER SECTION LINE
FOUND 1/2" IRON REBAR W/ YELLOW
CAP NO. 14417 UNLESS OTHERWISE NOTED
SET 5/8" IRON REBAR WITH
RED PLASTIC CAP NO. 21408

(IN FEET)
DRAWING MAY
HAVE BEEN REDUCED



I HEREBY CERTIFY THAT THIS LAND SURVEYING DOCUMENT WAS PREPARED
AND THE RELATED SURVEY WORK WAS PERFORMED BY ME OR UNDER MY
DIRECT PERSONAL SUPERVISION AND THAT I AM A DULY LICENSED LAND
SURVEYOR UNDER THE LAWS OF THE STATE OF IOWA.

FOR ORIGIN DESIGN

Craig L. Geiser
CRAIG L. GEISER

5-15-23
DATE

LICENSE NO. 21408 MY LICENSE RENEWAL DATE IS 12/31/2024

PAGES OR SHEETS COVERED BY THIS SEAL 1 THRU 2

origin
design®

800 556-4491 origindesign.com

DRAWN	GSB	PLAT NO.	COR CERT
CHECKED	CLG	PROJ. NO.	23711
DATE	5-15-23	SHEET	1 of 2
P:\23\700\711\DRAWINGS\SURVEY\23711 PLAT			

MONUMENT RECORD

COUNTY: JACKSON
TOWNSHIP: PRAIRIE SPRINGS

LIST CORNERS TO BE INDEXED

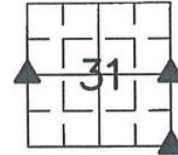
CORNERS	SECTION	TWP.	RANGE
W1/4	31	87N	3E
E1/4	31	87N	3E
SE	31	87N	3E

UNITED STATES PUBLIC LAND SURVEY CORNER CERTIFICATE OF

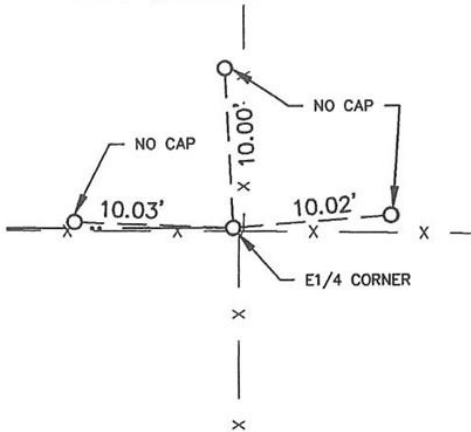
LAND SURVEY MONUMENTS SITUATED IN SECTION 31, TOWNSHIP 87 NORTH, RANGE 3 EAST
OF THE FIFTH PRINCIPAL MERIDIAN, JACKSON COUNTY, IOWA.



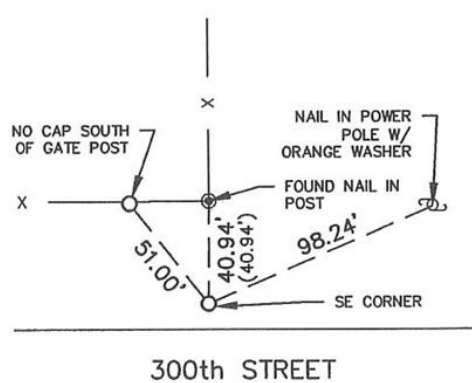
PLAN - VIEW



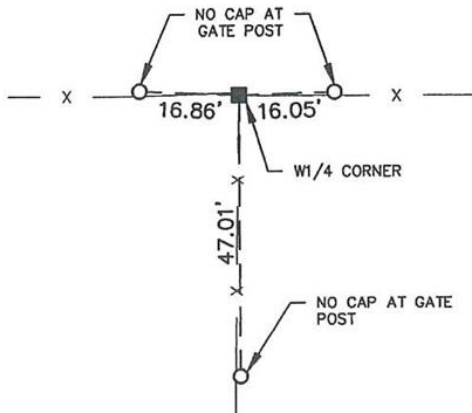
EAST 1/4 CORNER SECTION 31



SOUTHEAST CORNER SECTION 31



WEST 1/4 CORNER SECTION 31



LEGEND

- X ——— WIRE FENCE
- FOUND CONCRETE MONUMENT UNLESS OTHERWISE NOTED
- SET 5/8" IRON REBAR WITH RED PLASTIC CAP NO. 21408

origin
design®

800 556-4491 origindesign.com

DRAWN GSB PLAT NO. COR CERT

CHECKED CLG PROJ. NO. 23711

DATE 5-15-23 SHEET 2 of 2

P:\23\700\711\DRAWINGS\SURVEY\23711 PLAT

MONUMENT RECORD

COUNTY: JACKSON
TOWNSHIP: PRAIRIE SPRINGS

LIST CORNERS TO BE INDEXED

CORNERS	SECTION	TWP	RANGE
W1/4	31	87N	3E
E1/4	31	87N	3E
SE	31	87N	3E