

PHYLLIS M. GERLACH  
JACKSON COUNTY, IOWA  
RECORDER

Prepared by: SCHNEIDER Land Surveying and Planning P.O.Box105 Peosta, Iowa 52068 Ph#319-556-9055

## UNITED STATES PUBLIC LAND SURVEY CORNER CERTIFICATE OF

Land Survey Monuments situated in Section 2, Township 87 North, Range 3 East  
of the Fifth Principal Meridian, Jackson County, Iowa.  
Previously recorded NONE OF RECORD

Previously recorded \_\_\_\_\_ NONE OF RECORD

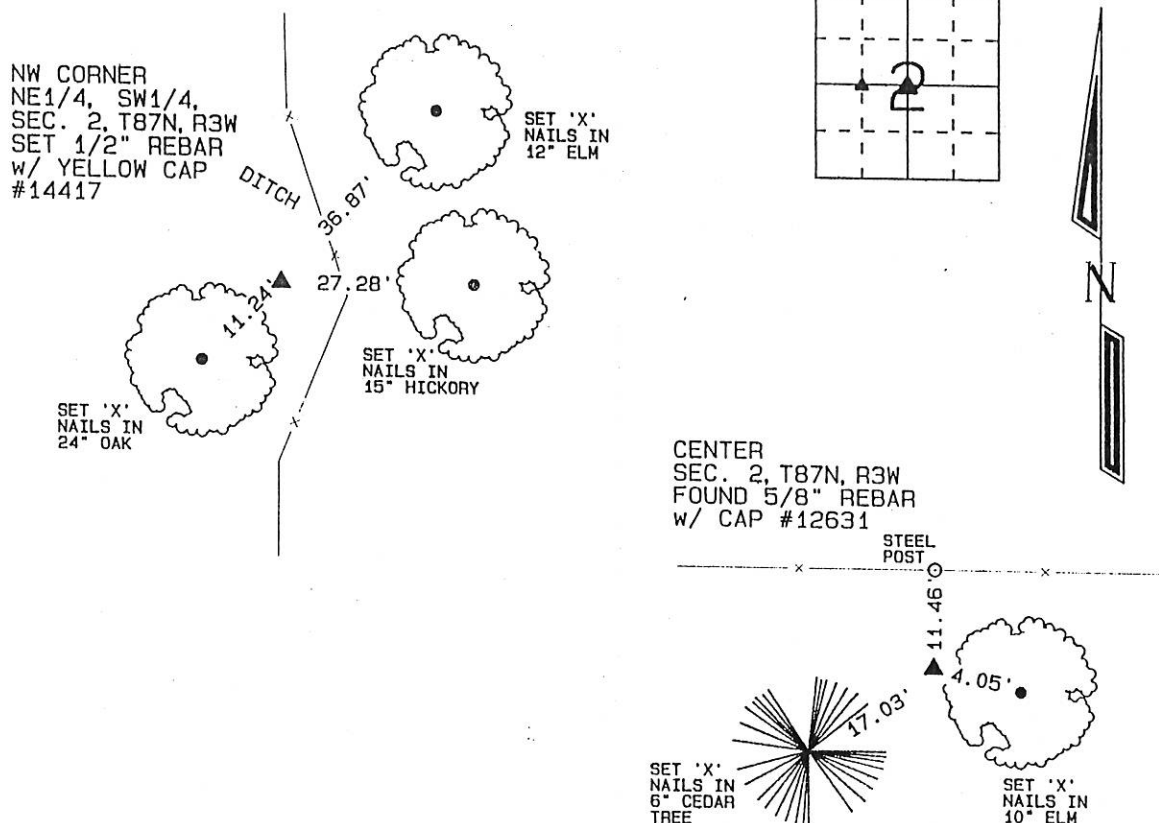
(Show reason for preparing this certificate, the evidence and detailed procedures used in establishing the corner positions and monumentation found or placed.)

Monument Description and Remarks: THE CENTER OF SEC. 2, T67N, R3W WAS TIED AS IT WAS FOUND AND SHOWN ON A PLAT OF SURVEY OF PARCEL 'D' FILED DEC. 2, 1996 IN BOOK 1-I, PAGE 120.

THE NW CORNER OF THE NE1/4 OF THE SW1/4 OF SECTION 2, T87N, R3W WAS NOT FOUND SO IT WAS PLACED AS INDICATED ON A PLAT OF SURVEY OF PARCEL 'F' FILED OCT. 19, 1998 IN BOOK 1-J, PAGE 115.

PLAN - VIEW

(Show a minimum of three reference ties to durable physical objects, relevant monuments and physical conditions that will enable recovery of the corner.)



I hereby certify that this land surveying document was prepared and the related survey work was performed by me or under my direct personal supervision and that I am a duly licensed Land Surveyor under the laws of the State of Iowa.

Don H. Schmidt 5/23/2000

David P. Schneider P.L.S. #14417 Date:

My license renewal date is December 31, 2001.

Pages or sheets covered by this seal: THIS SHEET ONLY

## List Corners to be Indexed

Corners	Section	Twp	Range
CENTER	2	87N	3E
NW CORNER NE1/4, SW1/4	2	87N	3E

SEAL

