

FILE NO. 03-6981  
BOOK 2 PAGE 213  
03 DEC 16 AM 11:18  
PHYLLIS M. GERLACH  
JACKSON COUNTY, IOWA  
RECORDER

Prepared by: SCHNEIDER Land Surveying and Planning, Inc. P.O. Box 105 Peosta, Iowa 52068 563-556-9055

# UNITED STATES PUBLIC LAND SURVEY CORNER CERTIFICATE OF

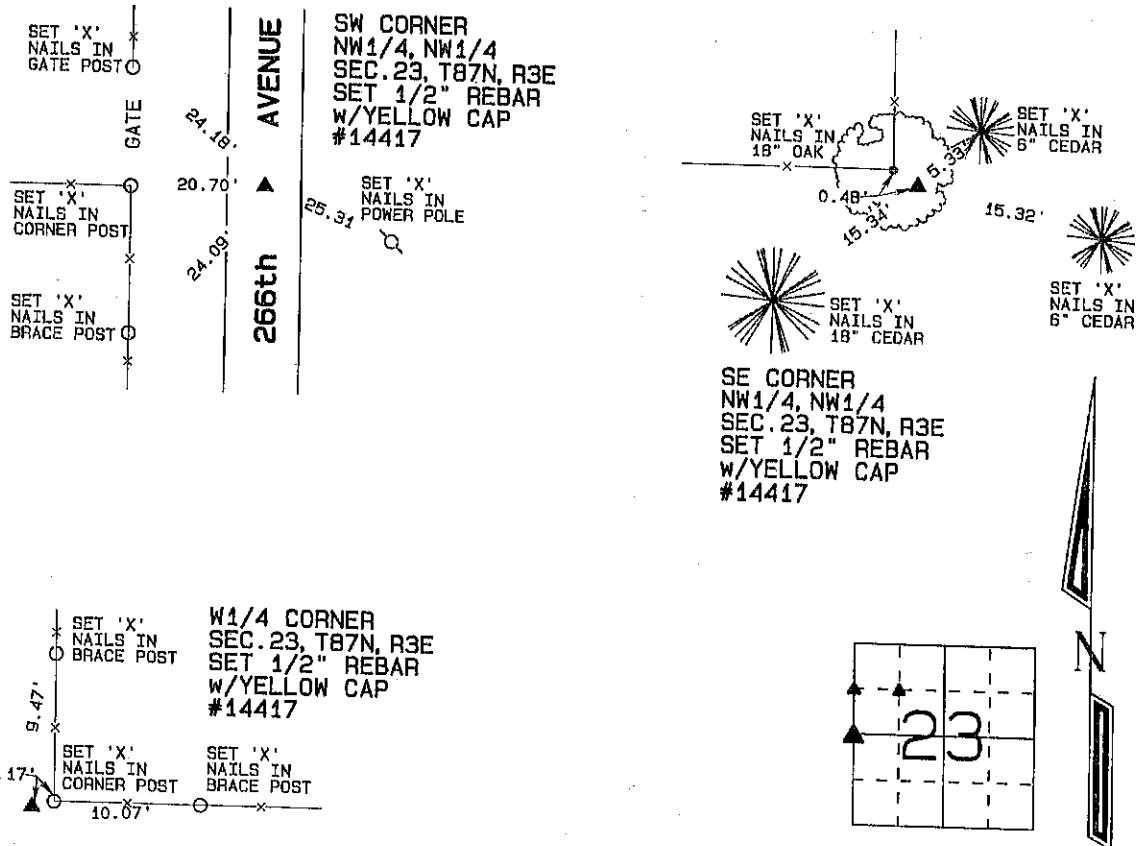
Land Survey Monuments situated in Section 23, Township 87 North, Range 3 East of the Fifth Principal Meridian, Jackson County, Iowa.  
Previously recorded (NONE OF RECORD)

(Show reason for preparing this certificate, the evidence and detailed procedures used in establishing the corner positions and monumentation found or placed.)

Monument Description and Remarks: THE SW CORNER OF THE NW1/4 OF THE NW1/4 OF SEC. 23, T87N, R3E WAS ESTABLISHED BY EXTENDING A LINE FROM THE MIDPOINT BETWEEN THE CENTER AND THE N1/4 CORNER THROUGH A FENCE INTERSECTION AT THE CENTER OF THE NW1/4 TO A LINE FROM THE NW CORNER TO THE W1/4 CORNER ALL IN SAID SECTION 23. THE SE CORNER OF THE NW1/4 OF THE NW1/4 OF SEC. 23, T87N, R3E WAS ESTABLISHED AS FENCED AND OCCUPIED. THE W1/4 CORNER OF SEC. 23, T87N, R3E WAS ESTABLISHED AS FENCED AND OCCUPIED.

## PLAN - VIEW

(Show a minimum of three reference ties to durable physical objects, relevant monuments and physical conditions that will enable recovery of the corner.)

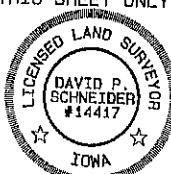


I hereby certify that this land surveying document was prepared and the related survey work was performed by me or under my direct personal supervision and that I am a duly licensed Land Surveyor under the laws of the State of Iowa.

David P. Schneider P.L.S. #14417 Date: 12/2/2003  
My license renewal date is December 31, 2003.

Pages or sheets covered by this seal: THIS SHEET ONLY

**SCHNEIDER**  
Land Surveying & Planning, Inc.  
P.O. Box 105 Peosta, Iowa 52068  
Ph. #563-556-9055 Fax#563-556-9054



### List Corners to be Indexed

Corners	Section	Twp	Range
SW CORNER NW1/4, NW1/4	23	87	3E
SE CORNER NW1/4, NW1/4	23	87	3E
W1/4	23	87	3E



Document 21-5198

Type 15 001 Pages 1  
 Date 12/20/2021 Time 9:13 AM  
 Rec Amt \$7.00

ARLENE SCHAUF, RECORDER/REGISTRAR  
 JACKSON COUNTY IOWA

Prepared by: SCHNEIDER Land Surveying and Planning, Inc. P.O. Box 128 Farley, Iowa 52046 563-744-3631

# UNITED STATES PUBLIC LAND SURVEY CORNER CERTIFICATE OF

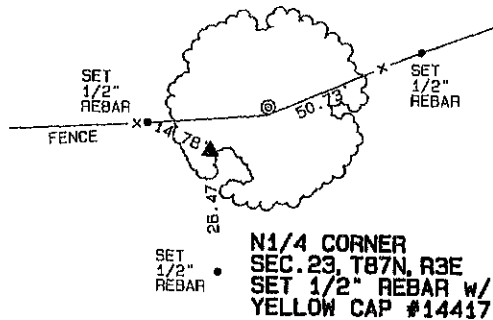
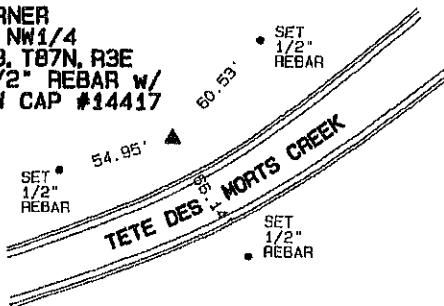
Land Survey Monuments situated in Section 23, Township 87 North, Range 3 East  
 of the Fifth Principal Meridian, Jackson County, Iowa.  
 Previously recorded (NONE OF RECORD)

(BOOK, PAGE / INST. NO. / CADDSET, BLIND)

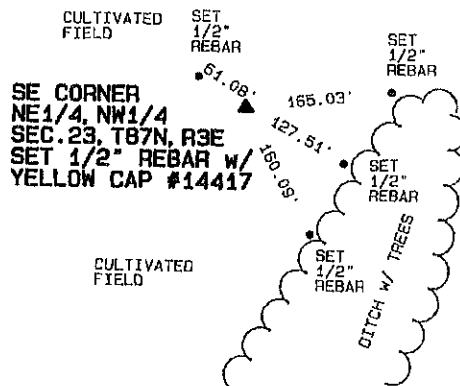
Monument Description and Remarks: THE N1/4 CORNER OF SEC. 23, T87N, R3E WAS ESTABLISHED ON A LINE FROM THE NORTHEAST CORNER TO THE NORTHWEST CORNER OF SAID SECTION 23 AND 462 FEET WEST OF THE EAST LINE OF THE WEST 20 ACRES OF THE SOUTHEAST QUARTER OF SECTION 14, T87N, R3E AS FENCED AND OCCUPIED. THE SE CORNER OF THE NE1/4 OF THE NW1/4 OF SEC. 23, T87N, R3E WAS PLACED ON LINE BETWEEN THE N1/4 CORNER AND THE CENTER OF SECTION 23 AND IN LINE WITH OCCUPATION EVIDENCE LOCATED NORTH, SOUTH AND EAST OF THE CORNER. THE NW CORNER OF THE NE1/4 OF THE NW1/4 OF SECTION 23, T87N, R3E WAS PLACED AT THE MIDPOINT OF A LINE FROM THE NW CORNER TO THE N1/4 CORNER OF SAID SECTION 23.

## PLAN - VIEW

NW CORNER  
 NE1/4, NW1/4  
 SEC. 23, T87N, R3E  
 SET 1/2" REBAR w/  
 YELLOW CAP #14417



N1/4 CORNER  
 SEC. 23, T87N, R3E  
 SET 1/2" REBAR w/  
 YELLOW CAP #14417



SE CORNER  
 NE1/4, NW1/4  
 SEC. 23, T87N, R3E  
 SET 1/2" REBAR w/  
 YELLOW CAP #14417

CULTIVATED FIELD

DITCH w/ TREES

I hereby certify that this land surveying document was prepared and the related survey work was performed by me or under my direct personal supervision and that I am a duly licensed Land Surveyor under the laws of the State of Iowa.

David P. Schneider P.L.S. #14417 Date: 12/6/2021  
 My license renewal date is December 31, 2021.

Pages or sheets covered by this seal: THIS SHEET ONLY

## List Corners to be Indexed

Corners	Section	Twp	Range
NW CORNER NE1/4, NW1/4	23	87N	3E
N1/4 CORNER	23	87N	3E
SE CORNER NE1/4, NW1/4	23	87N	3E

**SCHNEIDER**  
 Land Surveying & Planning, Inc.

P.O. Box 128 Farley, Iowa 52046  
 Ph. #563-744-3631 daves@yousq.net



JOB NO. 2658