



Document 04-4780

Book 2 Page 314 Type 06 23 Pages 1
Date 10/25/2004 Time 7:56 AM
Rec Amt \$7.00

PREPARED BY:
WILLIAM HOLT, PLS
NORWEST SURVEYING SERVICES, INC.
301 E LINCOLNWAY
MORRISON, IL 61270

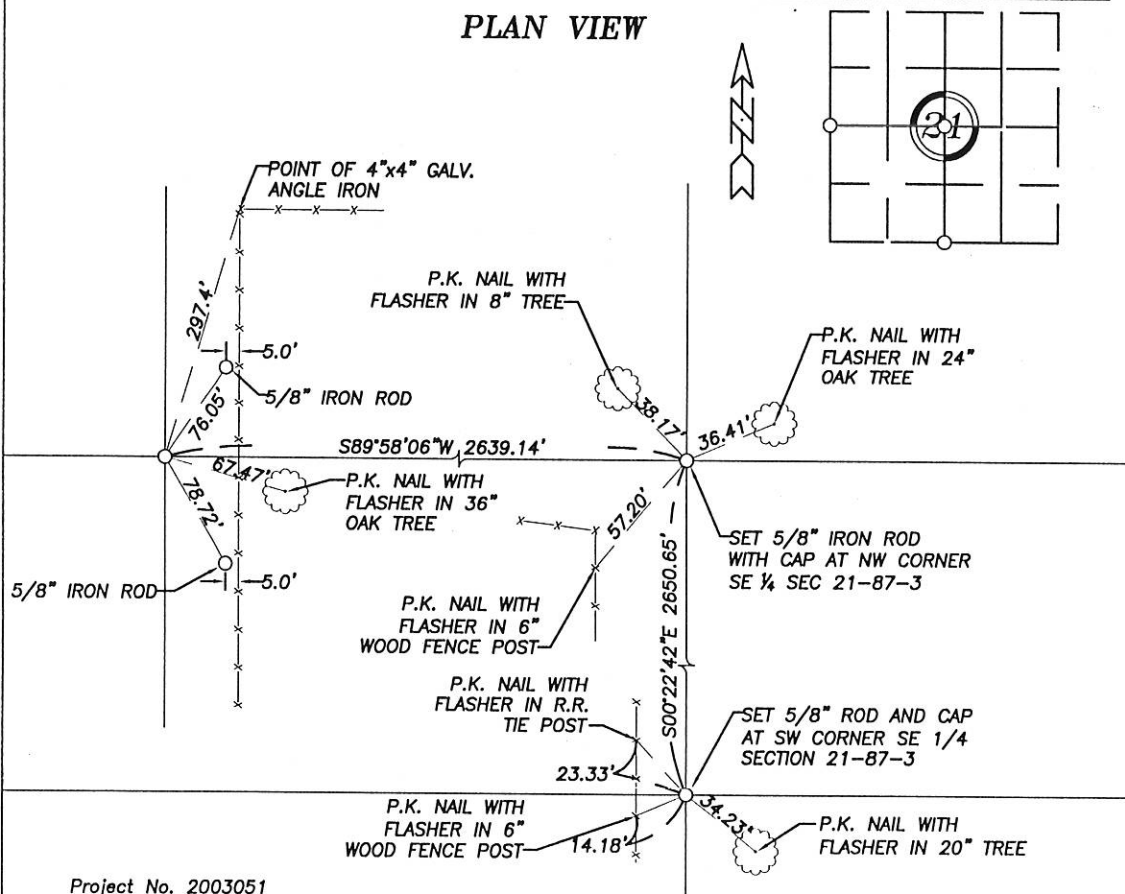
PHYLLIS M. GERLACH, RECORDER
JACKSON COUNTY IOWA

UNITED STATES PUBLIC LAND SURVEY CORNER CERTIFICATE OF

Land Survey Monuments in Section 21 in Township 87 North (T87N), Range 3 East (R3E)
of the Fifth Principal Meridian (5th PM), Jackson County, Iowa. (Not Previously Recorded)

Monuments were placed at prorata locations using existing monuments, fences and occupation
lines within this and adjoining Sections at the locations described below in Section 21

PLAN VIEW



Project No. 2003051

I hereby certify that the survey work was completed
and this land surveying document was prepared by
me or under my direct personal supervision and
that I am a duly registered land surveyor under the
laws of the State of Iowa.

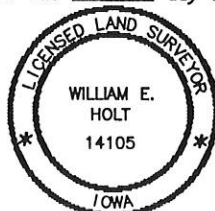
Signature: William E. Holt

William E. Holt

Iowa Registration No. 14105

My Registration Renews on December 31, 2004

Dated this 2ND day of September, 2004 C.E.



Corners to be Indexed

Corner	Section	Township	Range
NW CORNER SE 1/4	21	87N	3E
SW CORNER SE 1/4	21	87N	3E
NW CORNER SW 1/4	21	87N	3E

Book 2 Page 314