



Document 05-2766

Book 2 Page 366 Type 06 023 Pages 1

Date 7/12/2005 Time 10:32 AM

Rec Amt \$7.00

PHYLLIS M. GERLACH, RECORDER
JACKSON COUNTY IOWA

Prepared by Wm. Burger LandSurveyors

510 3rd Street West Court, Worthington, Iowa 52078

Phone 563 - 855 2028

UNITED STATES PUBLIC LAND SURVEY CORNER CERTIFICATE

Land Survey Monuments situated in Section 20, Township 87N, Range 3E, of the Fifth Principal Meridian, Jackson County, Iowa, Previously recorded in N/A in the Office of the County Recorder

Monument Description and Remarks: (No Corner Certificates found at the County Recorders Office)

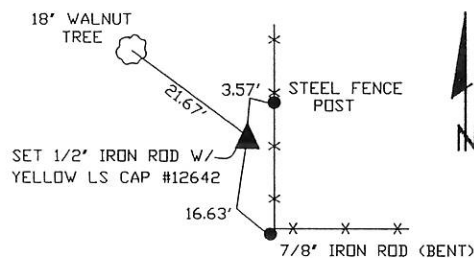
NW CORNER SW1/4 SE1/4 - SET 1/2' IRON ROD W/YELLOW LS CAP #12642 - SET ON LINE AND MIDWAY BETWEEN THE CENTER OF SECTION AND THE S1/4 CORNER

SE CORNER SW1/4 SE1/4 - SET 1/2' IRON ROD W/YELLOW LS CAP #12642 - SET ON LINE AND MIDWAY BETWEEN THE S1/4 CORNER AND THE SE CORNER

SW CORNER SW1/4 SE1/4 - SET 1/2' IRON ROD W/YELLOW LS CAP #12642 - SET ON LINE AND MIDWAY BETWEEN THE SW CORNER AND THE SE CORNER

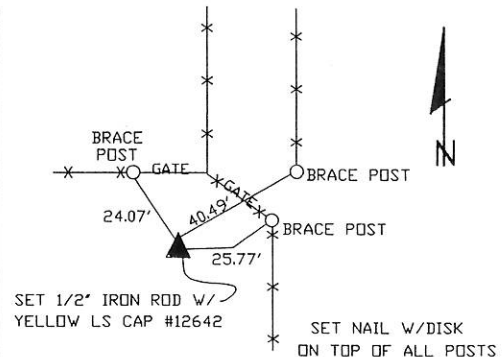
PLAN VIEW

NW CORNER SW1/4 SE1/4

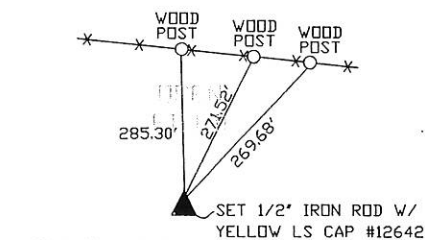


SET NAIL W/DISK
AT ALL TIE POINTS

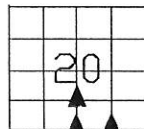
SE CORNER SW1/4 SE1/4



SW CORNER SW1/4 SE1/4



SET NAIL W/DISK
ON TOP OF ALL POSTS



SEC. 20 TWP. 87N RANGE 3E

CORNERS TO BE INDEXED

NW CORNER SW1/4 SE1/4	20	87N	3E
SE CORNER SW1/4 SE1/4	20	87N	3E
SW CORNER SW1/4 SE1/4	20	87N	3E



I hereby certify that this land surveying document was prepared and related survey work was performed by me or under my direct personal supervision and that I am a duly licensed Land Surveyor under the laws of the State of Iowa.

William H. Burger 6/28/05
William H. Burger Date
License number 12642

My license renewal date is December 31, 2006

Pages or Sheets covered by this seal Sheet 1 of 1



Document 16-1232

Book 2016 Page 1232 Type 15 001 Pages 1

Date 4/13/2016 Time 11:53 AM

Rec Amt \$7.00

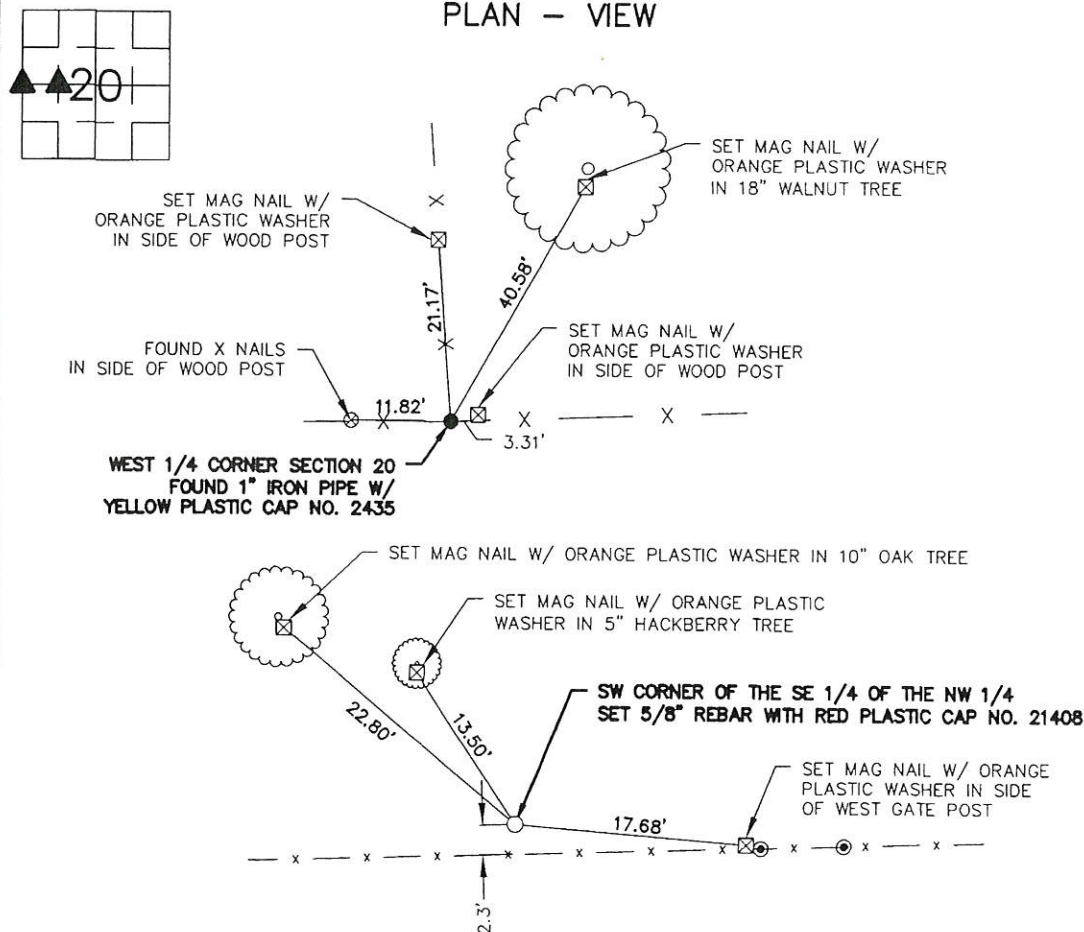
ARLENE SCHAUF, RECORDER/REGISTRAR
JACKSON COUNTY IOWA

PREPARED BY: IIW, P.C. 4155 PENNSYLVANIA AVE DUBUQUE, IOWA (563) 556-2464

UNITED STATES PUBLIC LAND SURVEY CORNER CERTIFICATE OF

LAND SURVEY MONUMENTS SITUATED IN SECTION 20, TOWNSHIP 87N, RANGE 3E
OF THE FIFTH PRINCIPAL MERIDIAN, JACKSON COUNTY, IOWA.PREVIOUSLY RECORDED IN N/A IN COUNTY RECORDER'S OFFICE.MONUMENT DESCRIPTION AND REMARKS: WEST 1/4 - NO CORNER CERTIFICATE ON FILE. FOUND 1" IRON PIPEWITH YELLOW PLASTIC CAP NO. 2435 SET BY ROBERT BYRNE ON SEPT. 2 1987. ACCEPTED MONUMENT AND
ESTABLISHED TIES AS SHOWN BELOW.SW CORNER OF THE SE 1/4 - NW 1/4 - NO CORNER CERTIFICATE ON FILE. SET 5/8" REBAR WITH RED PLASTIC
CAP NO. 21408 MIDWAY ON LINE BETWEEN WEST 1/4 CORNER AND CENTER SECTION

PLAN - VIEW

I HEREBY CERTIFY THAT THIS LAND SURVEYING DOCUMENT WAS PREPARED
AND THE RELATED SURVEY WORK WAS PERFORMED BY ME OR UNDER MY
DIRECT PERSONAL SUPERVISION AND THAT I AM A DULY LICENSED LAND
SURVEYOR UNDER THE LAWS OF THE STATE OF IOWA.

FOR IIW, P.C.

CRAIG L. GEISER DATE 3-22-16

LICENSE NO. 21408

MY LICENSE RENEWAL DATE IS 12/31/2016

PAGES OR SHEETS COVERED BY THIS SEAL

THIS SHEET ONLY

ARCHITECTURE
CIVIL ENGINEERING
CONSTRUCTION SERVICES
ENVIRONMENTAL ENGINEERING
LAND SURVEYING
MUNICIPAL ENGINEERING
STRUCTURAL ENGINEERING
TRANSPORTATION ENGINEERING

DRAWN BMR FIELD BK. 950

CHECKED CLG PROJ. NO. 15784

DATE 3-22-16 SHEET 1 of 1

P:\15\700\784\DRAWINGS\SURVEY\15784 CORNER CERTS

MONUMENT RECORD

COUNTY: JACKSON
TOWNSHIP: PRAIRIE SPRINGS

LIST CORNERS TO BE INDEXED

CORNERS	SECTION	TWP	RANGE
WEST 1/4	NO. 20	87N	3E
SW COR SE-NE	NO. 20	87N	3E



Document 16-1233

Book 2016 Page 1233 Type 15 001 Pages 1

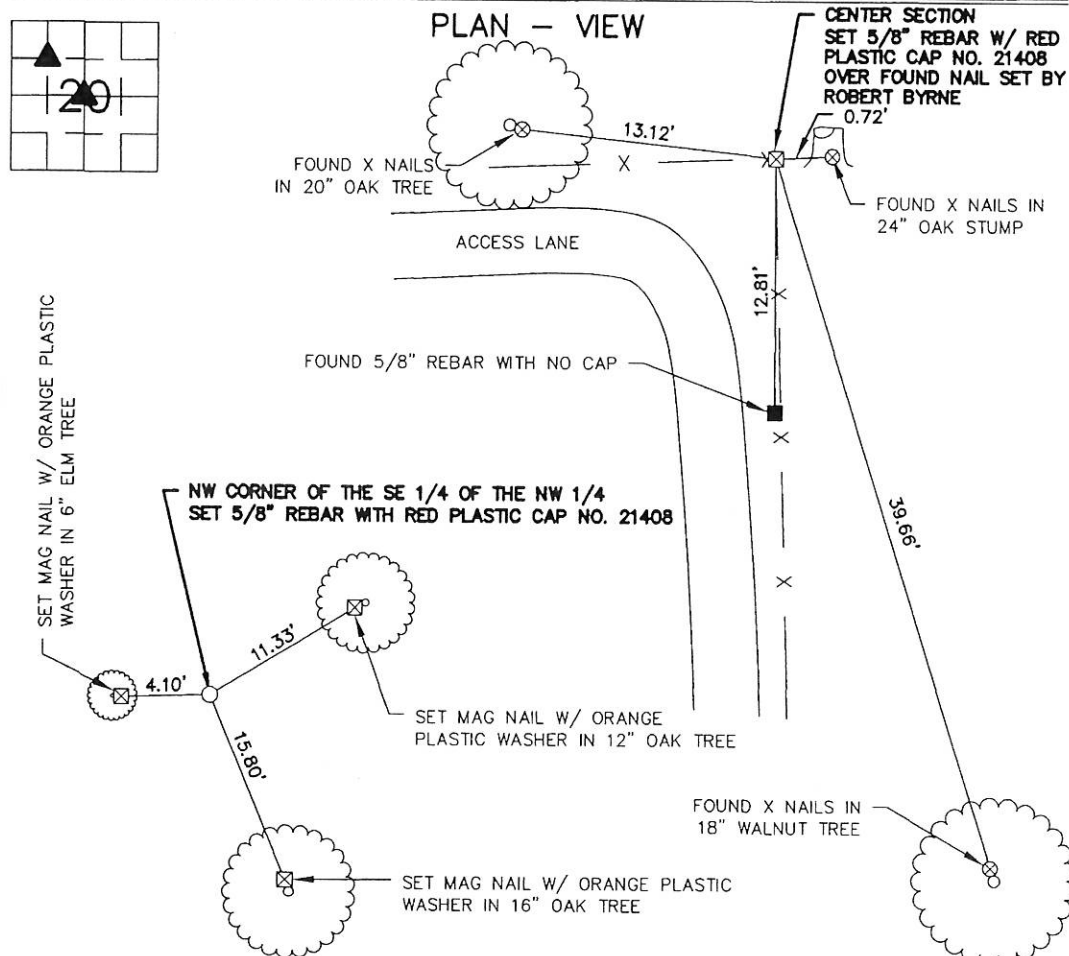
Date 4/13/2016 Time 11:54 AM

Rec Amt \$7.00

ARLENE SCHAUF, RECORDER/REGISTRAR
JACKSON COUNTY IOWA

PREPARED BY: IIW, P.C. 4155 PENNSYLVANIA AVE DUBUQUE, IOWA (563) 556-2464

UNITED STATES PUBLIC LAND SURVEY CORNER CERTIFICATE OF

LAND SURVEY MONUMENTS SITUATED IN SECTION 20, TOWNSHIP 87N, RANGE 3E
OF THE FIFTH PRINCIPAL MERIDIAN, JACKSON COUNTY, IOWA.PREVIOUSLY RECORDED IN N/A IN COUNTY RECORDER'S OFFICE.MONUMENT DESCRIPTION AND REMARKS: NW CORNER OF THE SE 1/4 - NW 1/4 - NO CORNER CERTIFICATE ON
FILE. SET 5/8" REBAR WITH RED PLASTIC CAP NO. 21408 MIDWAY ON LINE BETWEEN NW CORNER OF THE SW
1/4 - NW 1/4 AND THE NE CORNER OF THE SE 1/4 - NW 1/4 SECTION 20CENTER SECTION - NO CORNER CERTIFICATE ON FILE. FOUND NAIL IN BASE OF 24" OAK STUMP SET BY
ROBERT BYRNE ON SEPT. 2 1987. REPLACED NAIL WITH 5/8" REBAR AND RED PLASTIC CAP NO. 21408.I HEREBY CERTIFY THAT THIS LAND SURVEYING DOCUMENT WAS PREPARED
AND THE RELATED SURVEY WORK WAS PERFORMED BY ME OR UNDER MY
DIRECT PERSONAL SUPERVISION AND THAT I AM A DULY LICENSED LAND
SURVEYOR UNDER THE LAWS OF THE STATE OF IOWA.

FOR IIW, P.C.

3-22-16
DATE

CRAIG L. GEISER

LICENSE NO. 21408 MY LICENSE RENEWAL DATE IS 12/31/2016

PAGES OR SHEETS COVERED BY THIS SEAL

THIS SHEET ONLY

IIW, P.C.



www.iiwengr.com • 800.556.4491

ARCHITECTURE
CIVIL ENGINEERING
CONSTRUCTION SERVICES
ENVIRONMENTAL ENGINEERING
LAND SURVEYING
MUNICIPAL ENGINEERING
STRUCTURAL ENGINEERING
TRANSPORTATION ENGINEERING

DRAWN	BMR	FIELD BK.	950
CHECKED	CLG	PROJ. NO.	15784
DATE	3-22-16	SHEET	1 of 1
P:\15\700\784\DRAWINGS\SURVEY\15784 CORNER CERTS			

MONUMENT RECORD

COUNTY: JACKSON
TOWNSHIP: PRAIRIE SPRINGS

LIST CORNERS TO BE INDEXED

CORNERS	SECTION	TWP	RANGE
CENTER SECTION	NO. 20	87N	3E
NW CORNER SE 1/4 - NW 1/4	NO. 20	87N	3E