

Prepared by: SCHNEIDER Land Surveying and Planning, Inc. P.O. Box 105 Peosta, Iowa 52068 563-556-9055

UNITED STATES PUBLIC LAND SURVEY CORNER CERTIFICATE OF

Land Survey Monuments situated in Section 36, Township 88 North, Range 3 East of the Fifth Principal Meridian, Dubuque County, Iowa.

Previously recorded (NONE OF RECORD)

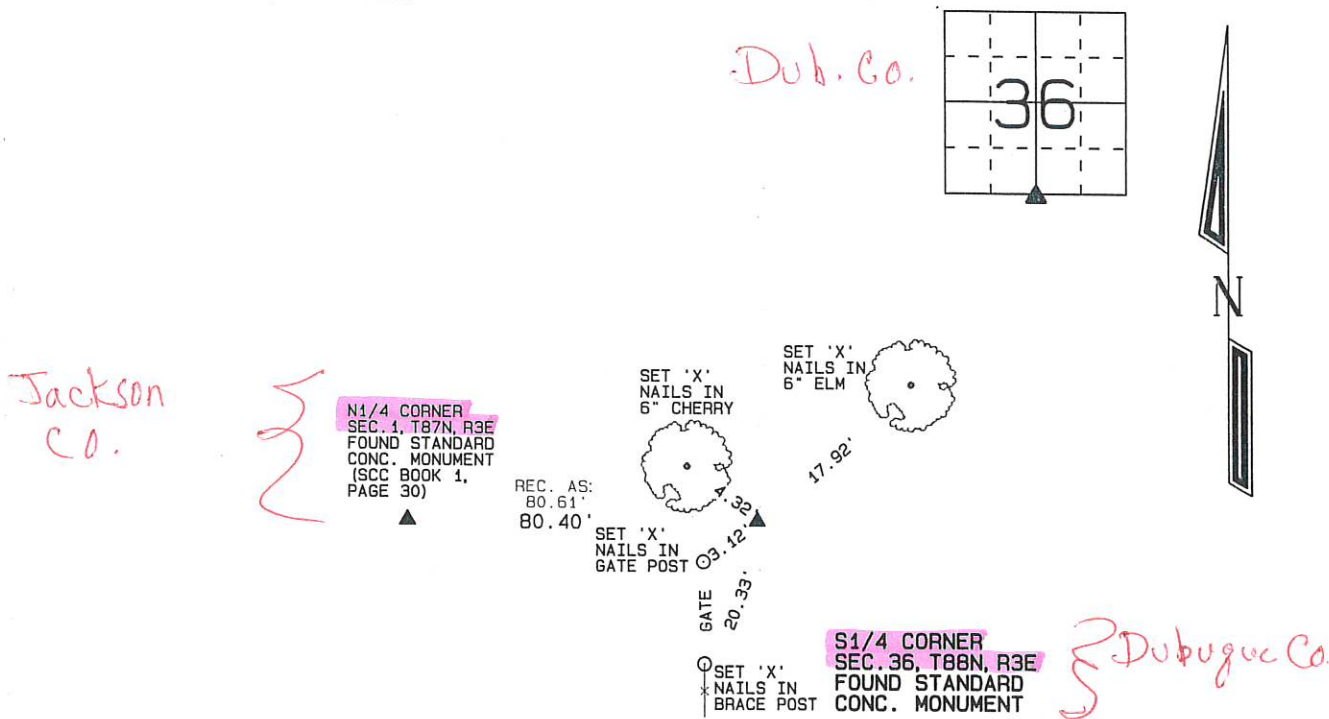
(BOOK, PAGE / INST. NO. / CABINET, SLIDE)

(Show reason for preparing this certificate, the evidence and detailed procedures used in establishing the corner positions and monumentation found or placed.)

Monument Description and Remarks: A STANDARD CONCRETE MONUMENT WAS FOUND AT THE S1/4 CORNER OF SEC. 36, T88N, R3E. THE MONUMENT WAS TIED AND USED AS THE S1/4 CORNER OF SAID SECTION 36.

PLAN - VIEW

(Show a minimum of three reference ties to durable physical objects, relevant monuments and physical conditions that will enable recovery of the corner.)



I hereby certify that this land surveying document was prepared and the related survey work was performed by me or under my direct personal supervision and that I am a duly licensed Land Surveyor under the laws of the State of Iowa.

David P. Schneider P.L.S. #14417

Date:

My license renewal date is December 31, 2003.

Pages or sheets covered by this seal: THIS SHEET ONLY

SCHNEIDER

Land Surveying & Planning, Inc.

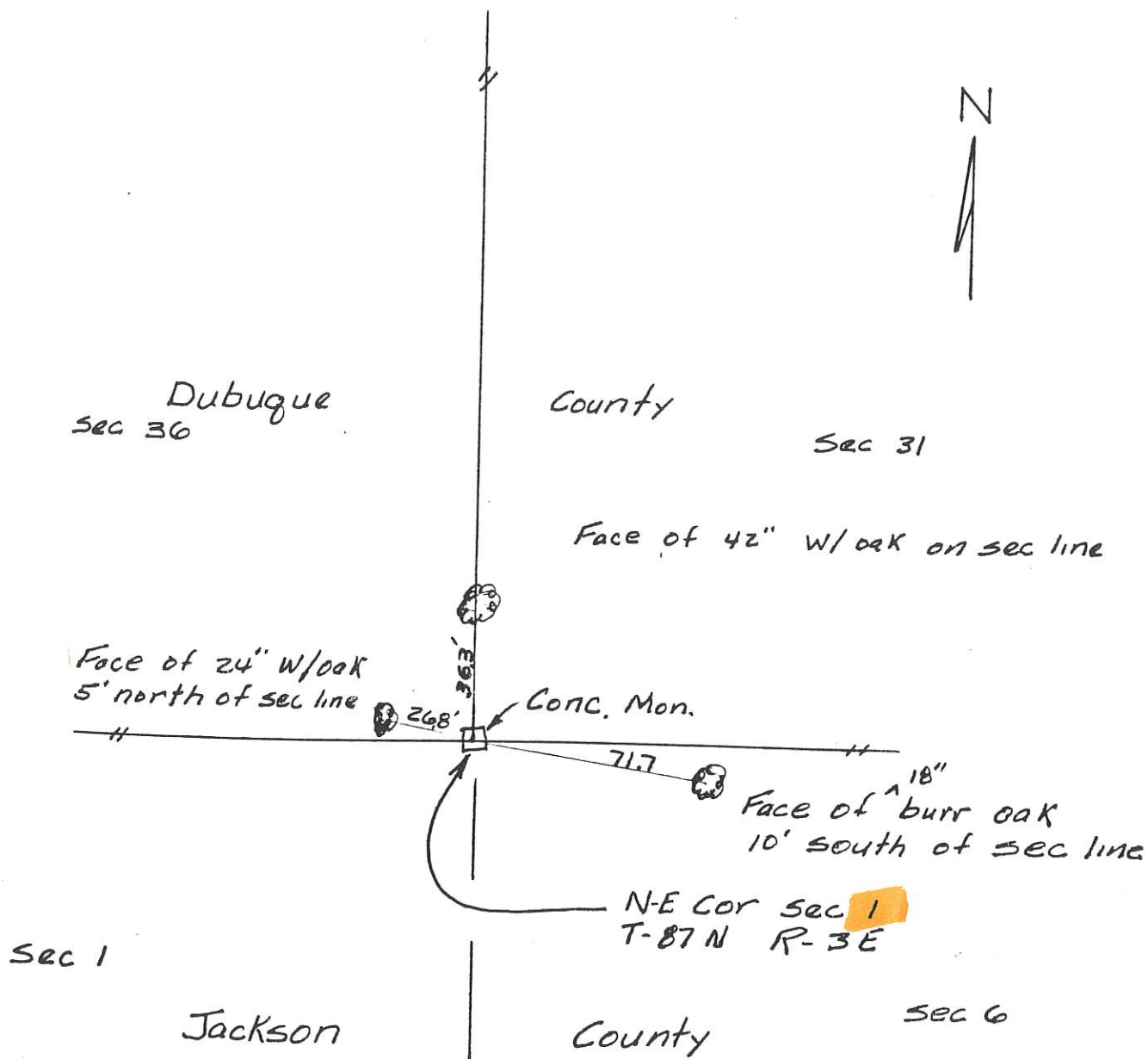
P.O. Box 105 Peosta, Iowa 52068
Ph. #563-556-9055 Fax#563-556-9054



List Corners to be Indexed

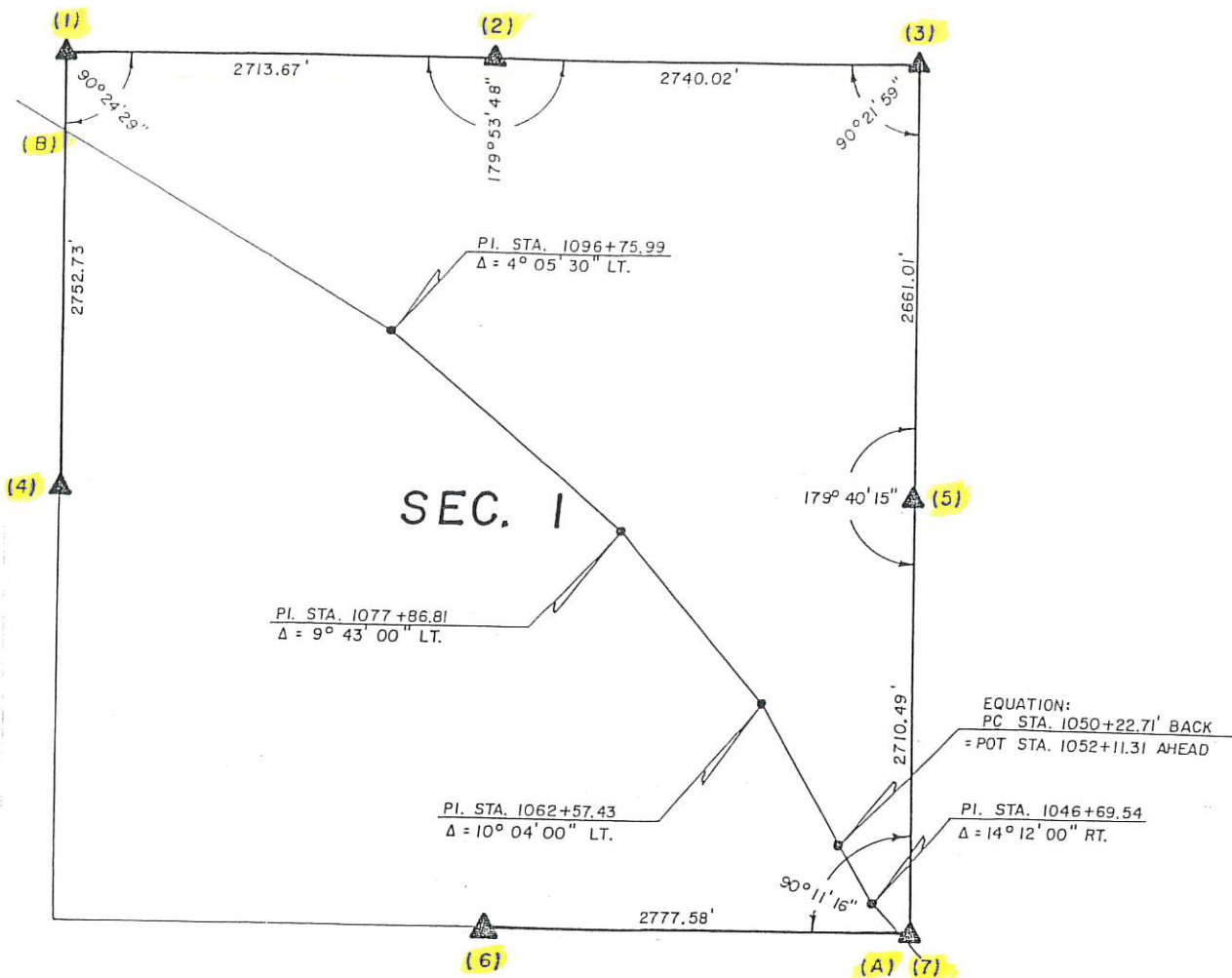
Corners	Section	Twp	Range
S1/4	36	88N	3E

T-87-N R-3-E PRAIRIE SPRINGS TWP.



Note Conc. Mon is located on the south side of a ditch bank approx 1' below top of bank and flush with the ground.

Sec. 1



UNITED STATES PUBLIC SECTION CORNER CERTIFICATION

AND
LAND CORNER SURVEY
T-87-N R-3-E

MADE FOR

IOWA DEPARTMENT OF TRANSPORTATION FOR THE
PURPOSE OF RIGHT OF WAY DESCRIPTIONS ON
PRIMARY ROAD No. U.S. 52.

MADE BY

LARRY R. MCGUIRE R. L. S. No. 9019
JACKSON COUNTY, IOWA FN-52-1(16)--21-49
DECEMBER 1989 THRU MAY 1990

ALL DISTANCES WERE CAREFULLY MEASURED AND MAY NOT AGREE
WITH ROAD SURVEY STATIONING.

FOR COMPLETE INFORMATION ON THIS SURVEY SEE FIELD NOTES
ON FILE AT THE DISTRICT OFFICE IN CEDAR RAPIDS, IOWA.

I, HEREBY CERTIFY THAT THIS IS A TRUE REPRESENTATION OF A
SURVEY MADE BY ME ASSISTED BY D. WILBERDING, D. KUNZE
V. HERNANDEZ, S. LEVY, D. GRANT, D. SANDS, ALL DULY SWORN,
AND IS CORRECT TO THE BEST OF MY KNOWLEDGE.

SIGNED: 11/30/90

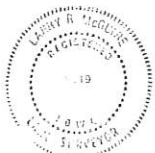
Larry R. McGuire
LARRY R. MCGUIRE R.L.S. No. 9019

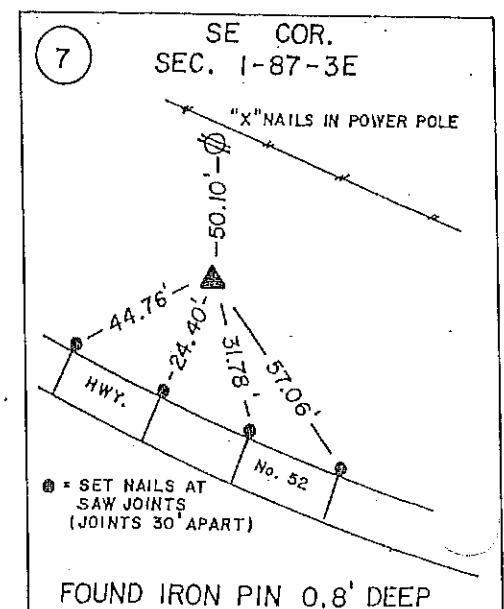
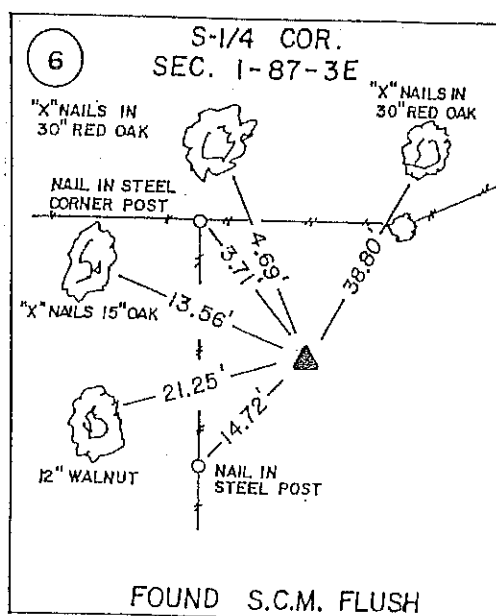
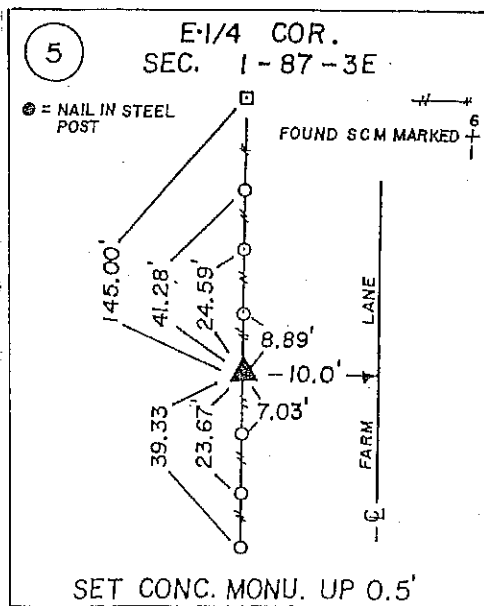
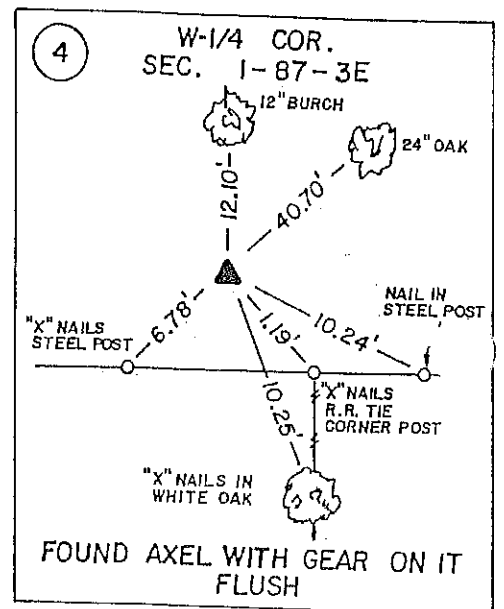
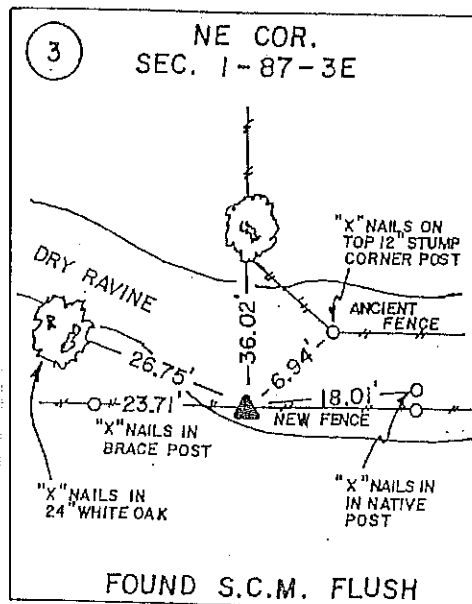
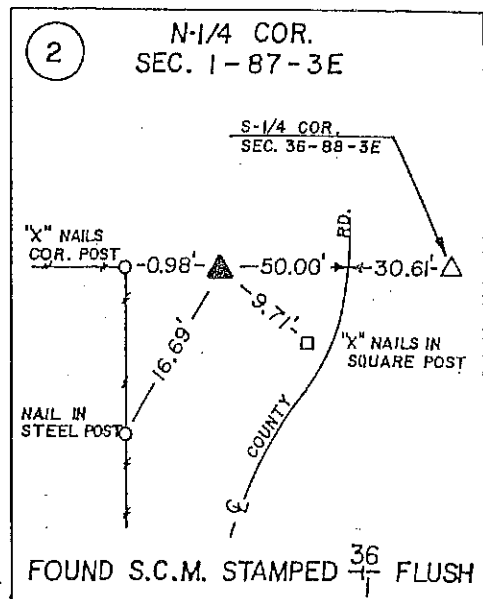
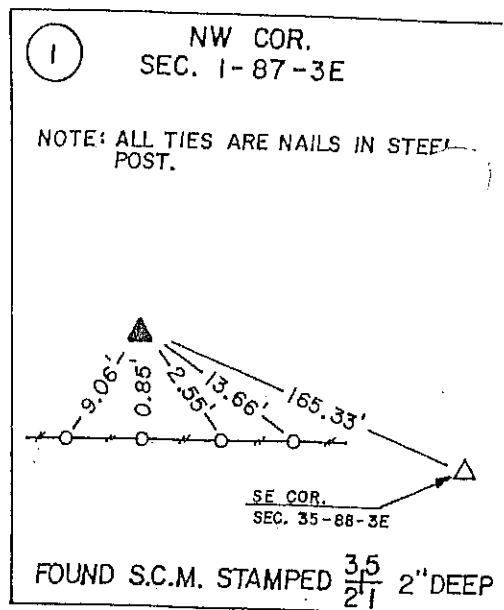
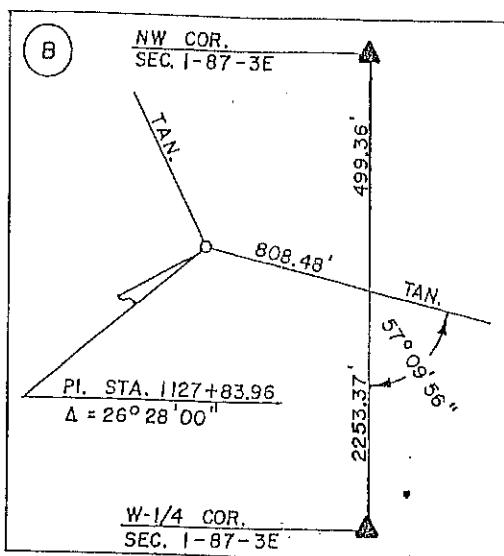
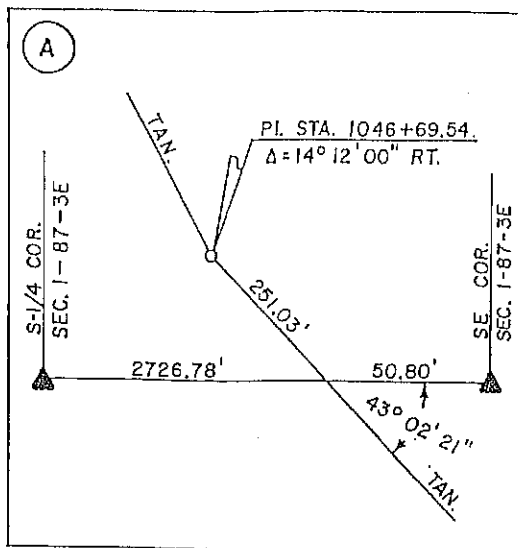
FILE NO. 1430
BOOK 1 PAGE 30

1991 JAN -2 AM 9:55

SHIRLY RITENOUR
JACKSON COUNTY, IOWA
RECORDER

Jan 5 00





FILE NO. 03-1009
PAGE 596

03 FEB 25 AM 10:26

Prepared by Wm. Burger Land Surveyors 510 3rd Street West Court, Worthington, Iowa

PHYLLIS M. GERLACH
JACKSON COUNTY, IOWA
RECORDER

UNITED STATES PUBLIC LAND SURVEY CORNER CERTIFICATE

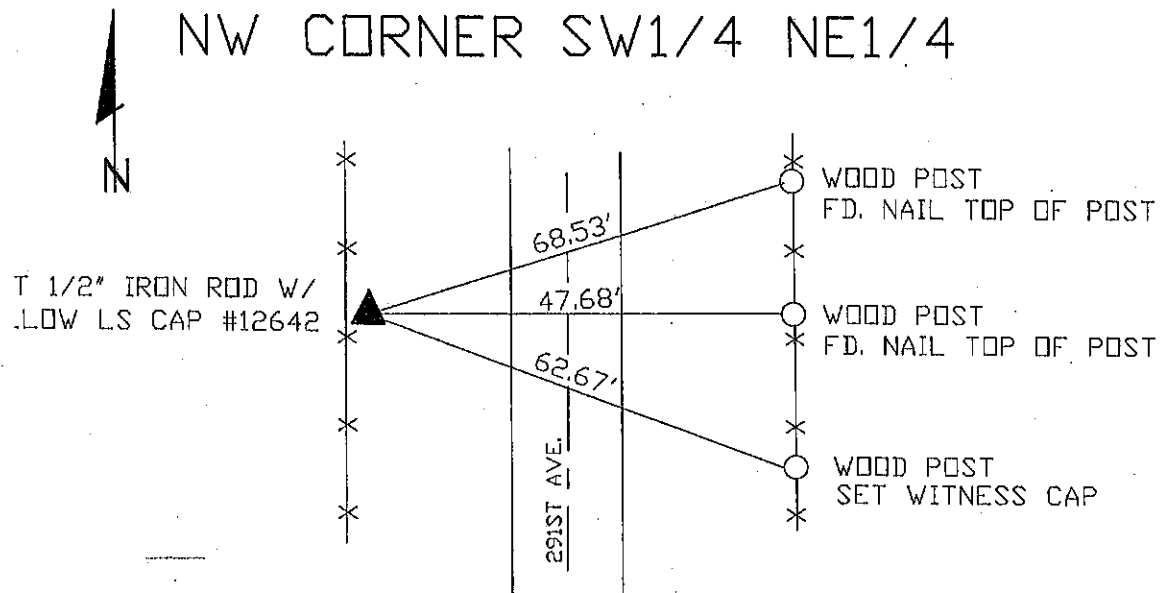
Fee \$6.00

Land Survey Monuments situated in Section 1, Township 87N, Range 3E, of the Fifth Principal Meridian, Jackson County, Iowa, Previously recorded in N/A in the Office of the County Recorder

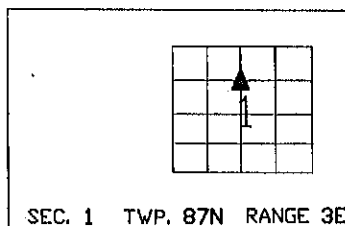
Monument Description and Remarks: (No Corner Certificates found at the County Recorder's Office)

NW CORNER SW1/4 NE1/4 - SET 1/2" IRON ROD W/YELLOW LS CAP #12642 - SET ON LINE
BETWEEN THE CENTER OF SECTION AND THE NE1/4 CORNER
USING RECORDED INFORMATION SET CORNER AT A PROPORTIONAL DISTANCE FROM CENTER
OF SECTION SEARCHED AREA BUT NOTHING WAS FOUND

PLAN VIEW



SEAL



SEC. 1 TWP. 87N RANGE 3E

I hereby certify that this land surveying document was prepared and related survey work was performed by me or under my direct personal supervision and that I am a duly licensed Land Surveyor under the laws of the State of Iowa.

William H. Burger 2/21/03
William H. Burger Date

License number 12642

My license renewal date is December 31, 2004

Pages or Sheets covered by this seal Sheet 1 of 1

CORNERS TO BE INDEXED

NW CORNER SW1/4 NE1/4 1 87N 3E

FILE NO. 03-2150
BOOK 2 PAGE 152

03 APR -9 AM 11:08

PHYLLIS M. GERLACH
JACKSON COUNTY, IOWA
RECORDER

Prepared by Wm. Burger Land Surveyors 510 3rd Street West Court, Worthington, Iowa 52078

Phone 563 - 855 2028 Fee \$6.00

UNITED STATES PUBLIC LAND SURVEY CORNER CERTIFICATE

Land Survey Monuments situated in Section 1, Township 87N, Range 3E, of the Fifth Principal Meridian, Jackson County, Iowa. Previously recorded in BK. 1 PG. 464 in the Office of the County Recorder

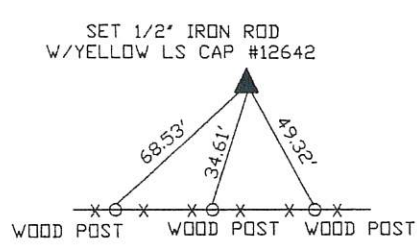
SE NW Monument Description and Remarks: (Found Errors in Previous Ties)

NW CORNER NE 1/4 NE 1/4 - SET 1/2" IRON ROD W/YELLOW LS CAP #12642 - RUN STRAIGHT LINES FROM OPPOSITE 1/4 1/4 CORNERS AND SET AT POINT OF INTERSECTION

SE CORNER NE 1/4 NE 1/4 - F.D. 1/2" IRON ROD W/RED LS CAP #9651

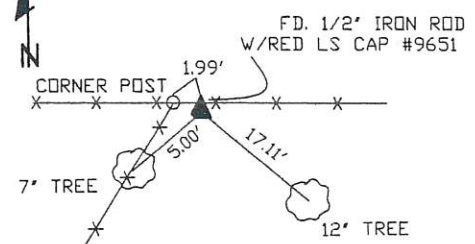
PLAN VIEW

SE CORNER NW 1/4 NE 1/4

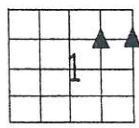


SET NAIL W/WITNESS CAP
AT ALL TIE POINTS

SE CORNER NE 1/4 NE 1/4



SET NAIL W/WITNESS CAP
AT ALL TIE POINTS



SEAL SEC. 1 TWP. 87N RANGE 3E

I hereby certify that this land surveying document was prepared and related survey work was performed by me or under my direct personal supervision and that I am a duly licensed Land Surveyor under the laws of the State of Iowa.

William H. Burger 4/4/03
William H. Burger Date

License number 12642
My license renewal date is December 31, 2004
Pages or Sheets covered by this seal: Sheet 1 of 1

CORNERS TO BE INDEXED

SE CORNER NW 1/4 NE 1/4 1 87N 3E
SE CORNER NE 1/4 NE 1/4 1 87N 3E

FILE NO. **03-5017**
 BOOK **2** PAGE **181**
 03 AUG 26 AM 11:11

PHYLLIS M. GERLACH
 JACSON COUNTY, IOWA
 RECORDED

Prepared by: SCHNEIDER Land Surveying and Planning, Inc. P.O. Box 105 Peosta, Iowa 52058-0105

UNITED STATES PUBLIC LAND SURVEY CORNER CERTIFICATE OF

Land Survey Monuments situated in Section 1, Township 87 North, Range 3 East of the Fifth Principal Meridian, Jackson County, Iowa.

(NONE OF RECORD)

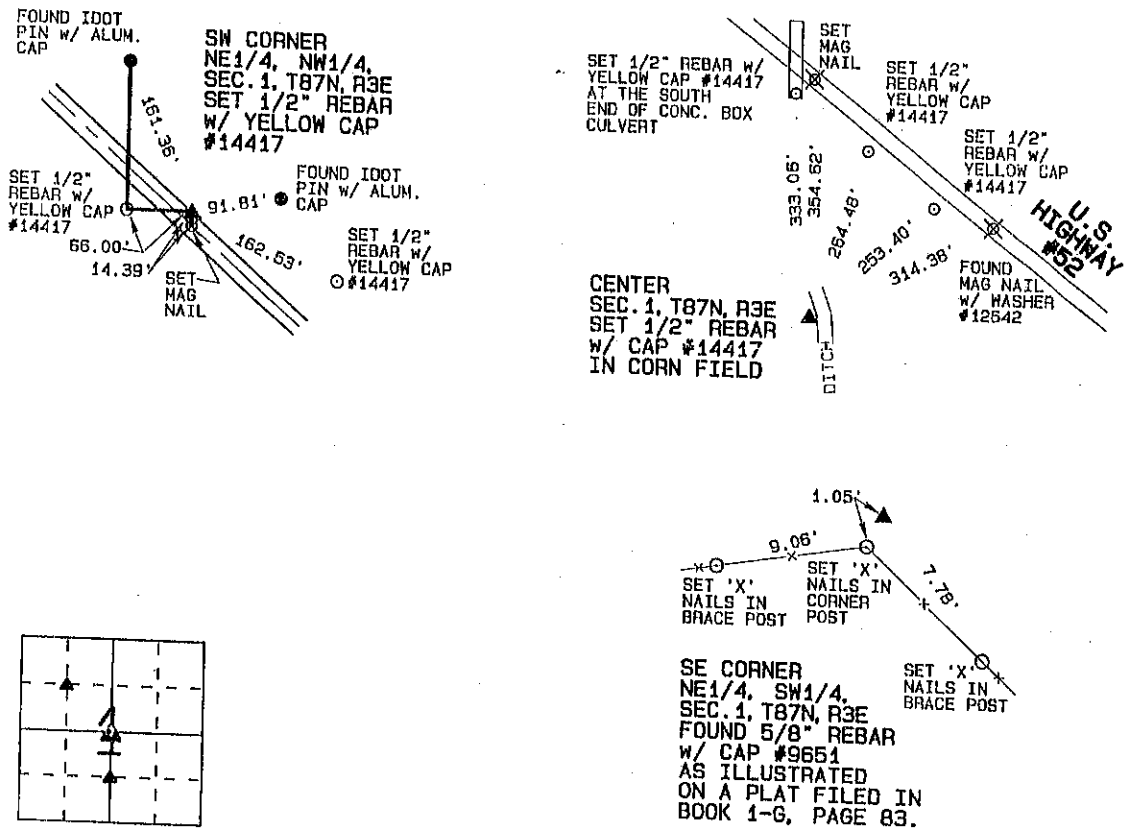
Fee #11.00

(Show reason for preparing this certificate, the evidence and detailed procedures used in establishing the corner positions and monumentation found or placed.)

Monument Description and Remarks: THE SW CORNER OF THE NE1/4 OF THE NW1/4 OF SEC. 1, T87N, R3E WAS ESTABLISHED AT THE THEORETICAL CENTER OF THE NW1/4 OF SECTION 1, T87N, R3E. THE CENTER OF SEC. 1, T87N, R3E WAS ESTABLISHED AS INDICATED ON A PLAT OF SURVEY FILED JANUARY 8, 2001 IN BOOK 1-L, PAGE 99. A 5/8" REBAR WITH CAP #9651 WAS FOUND AT THE SE CORNER OF THE NE1/4 OF THE SW1/4 OF SEC. 1, T87N, R3E AS ILLUSTRATED IN A PLAT FILED IN BOOK 1-G, PAGE 83. THE REBAR WAS TIED AND USED AS THE SE CORNER OF THE NE1/4 OF THE SW1/4 OF SAID SECTION 1.

PLAN - VIEW

(Show a minimum of three reference ties to durable physical objects, relevant monuments and physical conditions that will enable recovery of the corner.)

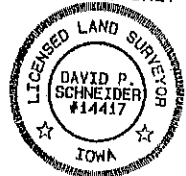


See additional filing 03-5181 - Book 2 Page 183

I hereby certify that this land surveying document was prepared and the related survey work was performed by me or under my direct personal supervision and that I am a duly licensed Land Surveyor under the laws of the State of Iowa.

David P. Schneider P.L.S. #14417 Date: 8/18/2003
 My license renewal date is December 31, 2003.
 Pages or sheets covered by this seal: THIS SHEET ONLY

SCHNEIDER
 Land Surveying & Planning, Inc.
 P.O. Box 105 Peosta, Iowa 52058
 Ph. #563-556-9055 Fax #563-556-9054



List Corners to be Indexed

Corners	Section	Twp	Range
CENTER	1	87N	3E
SW CORNER NE1/4, NW1/4	1	87N	3E
SW CORNER NE1/4, NW1/4	1	87N	3E

FILE NO. 03-5181
PAGE 183

03 SEP -3 AM 10:14

PHYLLIS M. GERLACH
JACKSON COUNTY, IOWA
RECORDER

Fee 11.00

Prepared by: SCHNEIDER Land Surveying and Planning, Inc. P.O. Box 105 Peosta, Iowa 52068 563-556-9055

UNITED STATES PUBLIC LAND SURVEY CORNER CERTIFICATE OF

Land Survey Monuments situated in Section 1, Township 87 North, Range 3 East of the Fifth Principal Meridian, Jackson County, Iowa.

IN BOOK 2, PAGE 181

(BOOK, PAGE / INST. NO. / CABINET, SLIDE)

(Show reason for preparing this certificate, the evidence and detailed procedures used in establishing the corner positions and monumentation found or placed.)

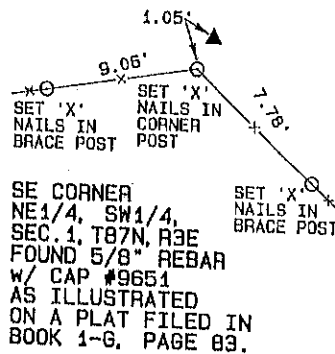
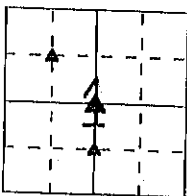
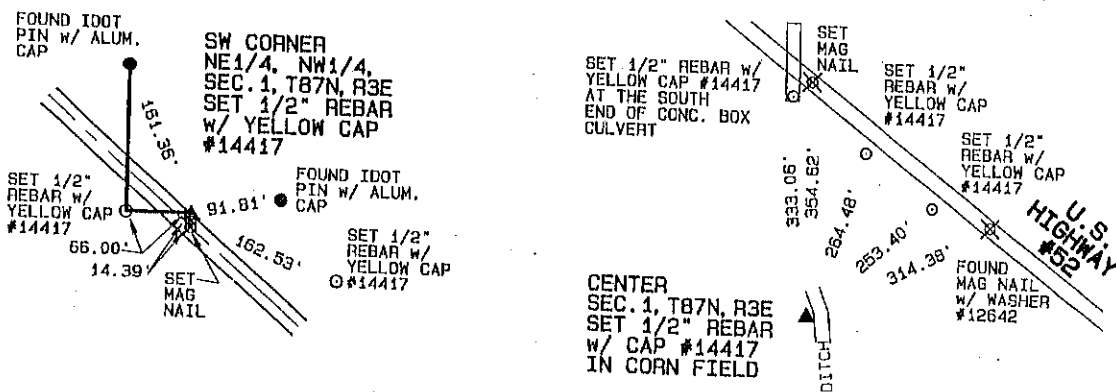
Monument Description and Remarks: THE SW CORNER OF THE NE1/4 OF THE NW1/4 OF SEC. 1, T87N, R3E WAS ESTABLISHED AT THE THEORETICAL CENTER OF THE NW1/4 OF SECTION 1, T87N, R3E. THE CENTER OF SEC. 1, T87N, R3E WAS

ESTABLISHED AS INDICATED ON A PLAT OF SURVEY FILED JANUARY 8, 2001 IN BOOK 1-L, PAGE 99.

A 5/8" REBAR WITH CAP #9651 WAS FOUND AT THE SE CORNER OF THE NE1/4 OF THE SW1/4 OF SEC. 1, T87N, R3E AS ILLUSTRATED IN A PLAT FILED IN BOOK 1-G, PAGE 83. THE REBAR WAS TIED AND USED AS THE SE CORNER OF THE NE1/4 OF THE SW1/4 OF SAID SECTION 1.

PLAN - VIEW

(Show a minimum of three reference ties to durable physical objects, relevant monuments and physical conditions that will enable recovery of the corner.)



See corner certificate on back of page 205 as file # 03-16065

I hereby certify that this land surveying document was prepared and the related survey work was performed by me or under my direct personal supervision and that I am a duly licensed Land Surveyor under the laws of the State of Iowa.

David P. Schneider
David P. Schneider P.L.S. #14417 Date: 8/28/2003
My license renewal date is December 31, 2003.
Pages 0 1 2 3 4 5 6 7 8 9 10 11 12 13 14 15 16 17 18 19 20 21 22 23 24 25 26 27 28 29 30 31 32 33 34 35 36 37 38 39 40 41 42 43 44 45 46 47 48 49 50 51 52 53 54 55 56 57 58 59 60 61 62 63 64 65 66 67 68 69 70 71 72 73 74 75 76 77 78 79 80 81 82 83 84 85 86 87 88 89 90 91 92 93 94 95 96 97 98 99 100
Its covered by this seal: THIS SHEET ONLY

SCHNEIDER
Land Surveying and Planning, Inc.
P.O. Box 105 Peosta, Iowa 52068
Tel. #563-556-9055 Fax #563-556-9054



List Corners to be Indexed			
Corners	Section	Twp	Range
CENTER	1	87N	3E
SW CORNER NE1/4, NW1/4	1	87N	3E
SE CORNER NE1/4, SW1/4	1	87N	3E

Book 2 Page 183

FILE NO. **03-6063**
BOOK **2** PAGE **203**

03 OCT 16 AM 10:40

PHYLLIS M. GERLACH
JACKSON COUNTY, IOWA
RECORDER *per 11-*

Prepared by: SCHNEIDER Land Surveying and Planning, Inc. P.O. Box 105 Peosta, Iowa 52068 563-556-9055

UNITED STATES PUBLIC LAND SURVEY CORNER CERTIFICATE OF

Land Survey Monuments situated in Section 1, Township 87 North, Range 3 East
of the Fifth Principal Meridian, Jackson County, Iowa.

Previously recorded SW CORNER NW1/4, SE1/4 SEC BOOK 2, PG 183

(Show reason for preparing this certificate, the evidence and detailed procedures used in establishing the corner positions and monumentation found or placed.)

Monument Description and Remarks: THE SW CORNER OF THE SE1/4 OF THE NW1/4 OF SEC. 1, T87N, R3E WAS ESTABLISHED AT THE MIDPOINT OF A LINE FROM THE W1/4 CORNER TO THE CENTER OF SAID SECTION 1.

THE SW CORNER OF THE NW1/4 OF THE SE1/4 OF SEC. 1, T87N, R3E WAS ESTABLISHED 1336.15' NORTH OF THE S1/4 CORNER ON

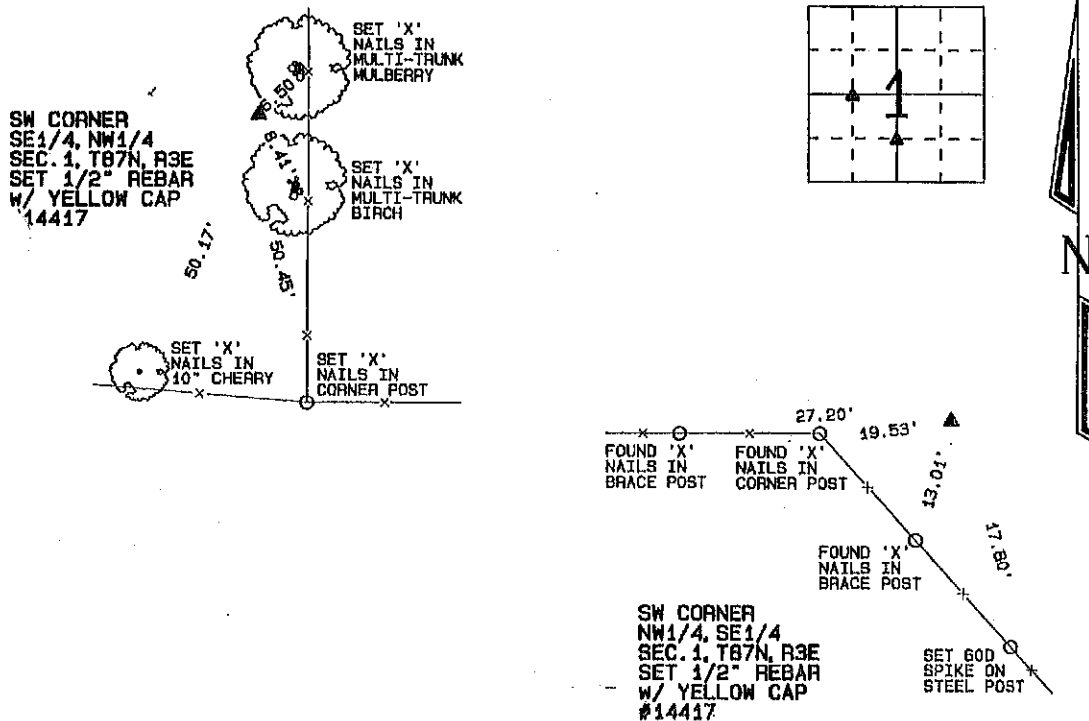
A LINE FROM THE S1/4 CORNER TO THE CENTER OF SAID SECTION 1 AS ILLUSTRATED ON A PLAT FILED IN BOOK 1-B ON PG 83.

THE SAID CORNER WAS PREVIOUSLY RECORDED IN SEC BOOK 2 ON PAGE 183. THE CORNER WAS RE-ESTABLISHED SO THAT

IT WOULD BE ON THE LINE FROM THE S1/4 CORNER TO THE CENTER OF THE SAID SECTION 1.

PLAN - VIEW

(Show a minimum of three reference ties to durable physical objects, relevant monuments and physical conditions that will enable recovery of the corner.)



I hereby certify that this land surveying document was prepared and the related survey work was performed by me or under my direct personal supervision and that I am a duly licensed Land Surveyor under the laws of the State of Iowa.

David P. Schneider P.L.S. #14417

Date:

license renewal date is December 31, 2003.

es or sheets covered by this seal: THIS SHEET ONLY

SCHNEIDER

Land Surveying & Planning, Inc.

P.O. Box 105 Peosta, Iowa 52068
Ph. #563-556-9055 Fax #563-556-9054



List Corners to be Indexed

Corners	Section	Twp	Range
SW CORNER SE1/4, NW1/4	1	87N	3E
SW CORNER NW1/4, SE1/4	1	87N	3E

JOB NO. 5388



Document 10-4301

Book 2 Page 731 Type 15 001 Pages 1

Date 10/28/2010 Time 12:47 PM

Rec Amt \$9.00

ARLENE SCHAUF, RECORDER/REGISTRAR
JACKSON COUNTY IOWA

PREPARED BY: MICHAEL J. WEBER, WEBER SURVEYING, LLC, 26789 46TH AVE, BERNARD, IA 52032 (563) 879-4173

UNITED STATES PUBLIC LAND SURVEY CORNER CERTIFICATE OF

LAND SURVEY MONUMENTS SITUATED IN SECTION 1, TOWNSHIP 87 NORTH, RANGE 3 EAST
OF THE FIFTH PRINCIPAL MERIDIAN, JACKSON COUNTY, IOWA.

PREVIOUSLY RECORDED NONE UNLESS NOTED BELOW

(book, page, document number, etc.)

(Show reason for preparing this certificate, the evidence and detailed procedures used in establishing the corner positions and nonumentation found or placed.)

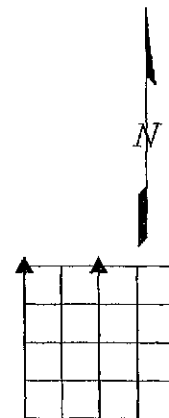
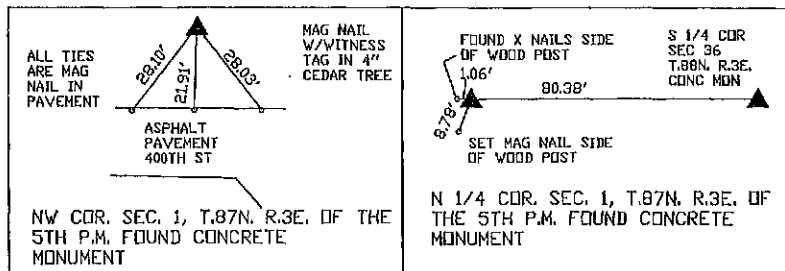
Monument Description and Remarks:

-NW COR. SEC. 1, T.87N. R.3E. OF THE 5TH P.M. FOUND CONCRETE MONUMENT

-NORTH 1/4 COR. SEC. 1, T.87N. R.3E. OF THE 5TH P.M. FOUND CONCRETE MONUMENT

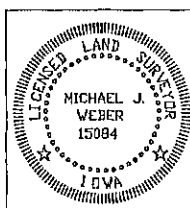
(Show a minimum of three reference ties to durable physical objects, relevant monuments and physical conditions that will enable recovery of the corner.)

PLAN - VIEW



DRAWING NOT TO SCALE

DWG. NO. MOHR



I HEREBY CERTIFY THAT THIS LAND SURVEYING DOCUMENT WAS
PREPARED AND THE RELATED SURVEY WORK WAS PERFORMED BY ME OR
UNDER MY DIRECT PERSONAL SUPERVISION AND THAT I AM A DULY
LICENSED LAND SURVEYOR UNDER THE LAWS OF THE STATE OF IOWA.

Michael J. Weber *October 21, 2010*
MICHAEL J. WEBER (DATE)

LICENSE NUMBER 15084

MY LICENSE RENEWAL DATE IS DECEMBER 31, 2011

SHEETS COVERED BY THIS SEAL: THIS SHEET

Corner	Sec	Twp	Range
NW CORNER	1	87N	3E
N 1/4	1	87N	3E

Book 2 Page 731

JOB NO. 5388



Document 21-2438

Type 15 001

Pages 1

Date 6/07/2021 Time 8:13 AM

Rec Amt \$7.00

ARLENE SCHAUF, RECORDER/REGISTRAR
JACKSON COUNTY IOWA

PREPARED BY: MICHAEL J. WEBER, WEBER SURVEYING, LLC, 26789 46TH AVE, BERNARD, IA 52032 (563) 879-4173

UNITED STATES PUBLIC LAND SURVEY CORNER CERTIFICATE OF

LAND SURVEY MONUMENTS SITUATED IN SECTION 1, TOWNSHIP 87 NORTH, RANGE 3 EAST
OF THE FIFTH PRINCIPAL MERIDIAN, JACKSON COUNTY, IOWA.
PREVIOUSLY RECORDED SEE NOTES BELOW

(book, page, document number, etc.)

(Show reason for preparing this certificate, the evidence and detailed procedures used in establishing the corner positions and monumentation found or placed.)

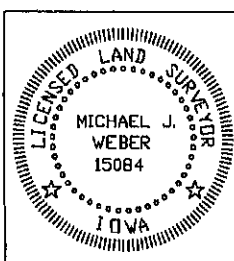
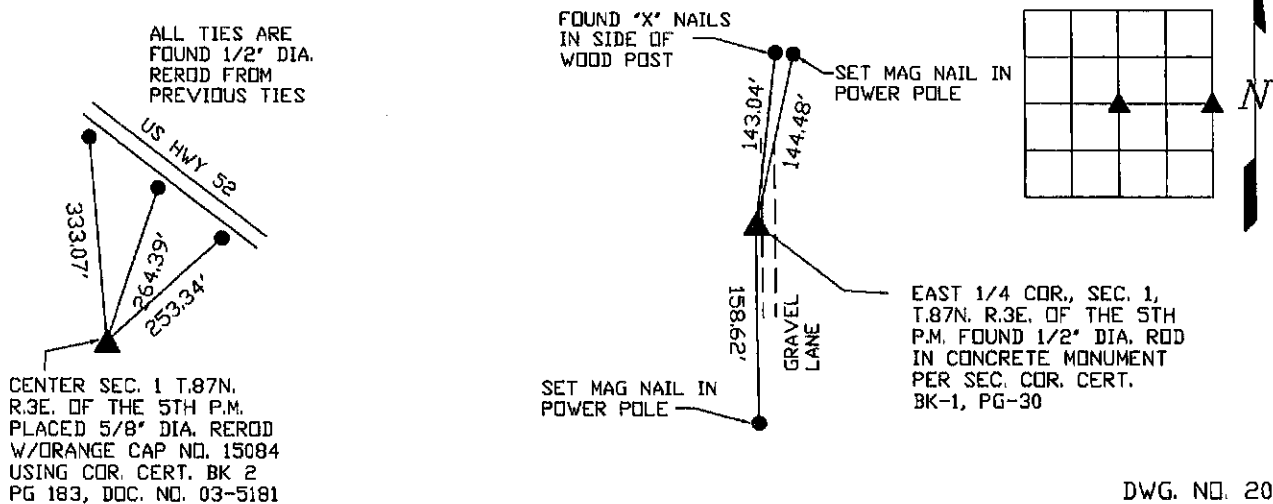
Monument Description and Remarks:

-CENTER SEC. 1, T.87N. R.3E. OF THE 5TH P.M. PLACED 5/8" DIA. REROD W/ORANGE CAP NO. 15084
PREVIOUSLY RECORDED IN COR. CERT. BK 2 PG 183, DOC. NO. 03-5181.

-EAST 1/4 COR., SEC. 1, T.87N. R.3E. OF THE 5TH P.M. FOUND 1/2" DIA. ROD IN CONCRETE MONUMENT
PREVIOUSLY RECORDED IN COR. CERT. BK-1, PG-30.

PLAN - VIEW

(Show a minimum of three reference ties to durable physical objects, relevant monuments and physical conditions that will enable recovery of the corner.)



I HEREBY CERTIFY THAT THIS LAND SURVEYING DOCUMENT WAS
PREPARED AND THE RELATED SURVEY WORK WAS PERFORMED BY ME OR
UNDER MY DIRECT PERSONAL SUPERVISION AND THAT I AM A DULY
LICENSED LAND SURVEYOR UNDER THE LAWS OF THE STATE OF IOWA.

Michael J. Weber June 4, 2021
MICHAEL J. WEBER (DATE)
LICENSE NUMBER 15084

MY LICENSE RENEWAL DATE IS DECEMBER 31, 2021

SHEETS COVERED BY THIS SEAL 1

List Corners to be Indexed

Corner	Sec	Twp	Range
CENTER	1	87N	3E
EAST 1/4 COR.	1	87N	3E