

Document 05-1113

Book 2 Page 340 Type 06 23 Pages 1
Date 3/23/2005 Time 9:15 AM
Rec Amt \$7.00

PHYLLIS M. GERLACH, RECORDER
JACKSON COUNTY IOWA

Prepared by: SCHNEIDER Land Surveying and Planning, Inc. P.O. Box 128 Farley, Iowa 52046 563-744-3631

UNITED STATES PUBLIC LAND SURVEY CORNER CERTIFICATE OF

Land Survey Monuments situated in Section 18, Township 87 North, Range 3 East
of the Fifth Principal Meridian, Jackson County, Iowa.
Previously recorded (NONE OF RECORD)

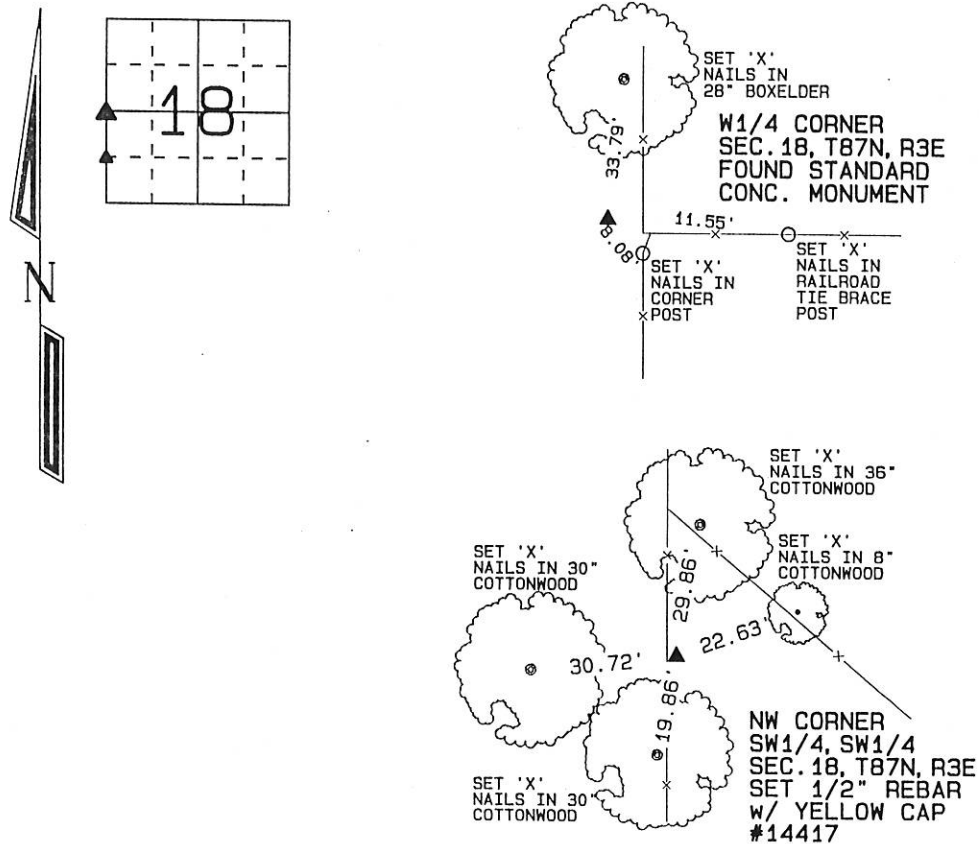
(Show reason for preparing this certificate, the evidence and detailed procedures used in establishing the corner positions and monumentation found or placed.)

Monument Description and Remarks: A STANDARD CONCRETE MONUMENT WAS FOUND AT THE W1/4 CORNER OF SEC. 18, T87N, R3E AS ILLUSTRATED IN W.P.A. NOTES DATED JUNE 21, 1940 OBTAINED FROM THE OFFICE OF THE ENGINEER OF DUBUQUE COUNTY. THE MONUMENT WAS TIED AND USED AS THE W1/4 CORNER.

THE NW CORNER OF THE SW1/4 OF THE SW1/4 OF SEC. 18, T87N, R3E WAS ESTABLISHED AT THE MIDPOINT OF A LINE FROM THE SW CORNER TO THE W1/4 CORNER OF SAID SECTION 18.

PLAN - VIEW

(Show a minimum of three reference ties to durable physical objects, relevant monuments and physical conditions that will enable recovery of the corner.)

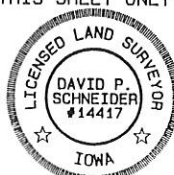


I hereby certify that this land surveying document was prepared and the related survey work was performed by me or under my direct personal supervision and that I am a duly licensed Land Surveyor under the laws of the State of Iowa.

David P. Schneider P.L.S. #14417 / Date: 3/22/2005
My license renewal date is December 31, 2005.

Pages or sheets covered by this seal: THIS SHEET ONLY

SCHNEIDER
Land Surveying & Planning, Inc.
P.O. Box 128 Farley, Iowa 52046
Ph. #563-744-3631 Fax #563-744-3629



List Corners to be Indexed

Corners	Section	Twp	Range
W1/4	18	87N	3E
NW CORNER SW1/4, SW1/4	18	87N	3E



Document 06-4833

Book 2 Page 503 Type 15 001 Pages 1

Date 12/22/2006 Time 10:27 AM

Rec Amt \$7.00

ARLENE SCHAUF, RECORDER
JACKSON COUNTY IOWA

PREPARED BY: EGGER ENGINEERING AND LAND SURVEYING, P.C. 2395 TECH DR. STE. 2 BETTENDORF, IA 52722

UNITED STATES PUBLIC LAND SURVEY CORNER CERTIFICATE
OF

Land Survey Monument situated in Section 18, Township 87N, Range 3E, of the Fifth Principal Meridian,
JACKSON County, Iowa. Previously recorded in NO RECORDS EXIST in County Recorder's Office.

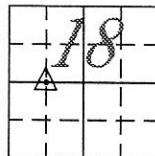
(Book, Page, Document Number, etc.)

(Show reason for preparin this certificate, the evidence and detailed procedures used in establishing the corner positions and monumentation found or placed.)

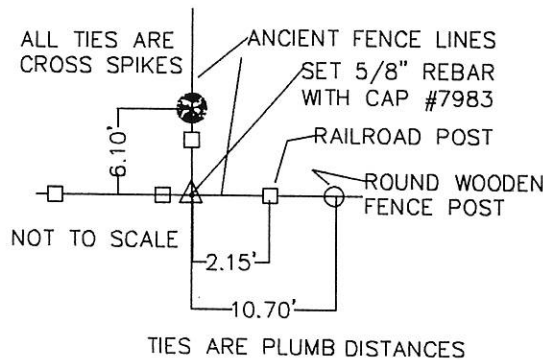
Monument Description and Remarks: RESET THE NE CORNER OF THE NW1/4 OF SW1/4 OF SECTION 18 BY USING ANCIENT FENCE LINES.

PLAN - VIEW

(Show a minimum of three reference ties to durable physical objects, relevant monuments and physical conditions that will enable recovery of the corner.)



NORTHEAST CORNER
OF THE NW1/4 OF THE SW1/4
OF SECTION 18,
TOWNSHIP 87 NORTH,
RANGE 3 EAST OF THE 5TH PM.



I hereby certify that the survey work was completed and this certificate was prepared by me or under my direct personal supervision and that I am a duly registered land surveyor under the laws of the state of Iowa.

Signature: James L. Egger

James L. Egger P.E. & L.S.

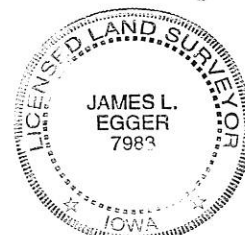
Dated: DEC. 20, 2006 Reg. No. 7983

My registration renewal date is December 31, 2007

SEAL

List Corners to be Indexed

Corners	Section	Twp.	Range
NE CORNER OF NW1/4 OF SW1/4	18	87N	3E



Book 2 Page 503