

UNITED STATES PUBLIC LAND SURVEY CORNER CERTIFICATE OF

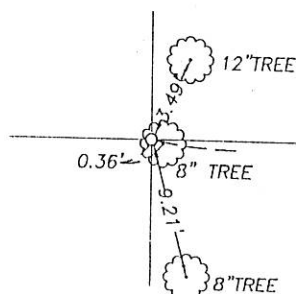
Land Survey Monuments in Section 15 in Township 87 North (T87N), Range 3 East (R3E) of the Fifth Principal Meridian (5th PM), Jackson County, Iowa. (Not Previously Recorded)

Monuments were placed at the Northeast corner, the Northwest Corner and the Southeast Corner of the Southwest Quarter (SW 1/4) of the Northeast Quarter (NE 1/4) of Section 15 per the descriptions below.

Corner locations were established at prorata locations using existing monuments, fences and occupation lines within this and adjoining Sections.

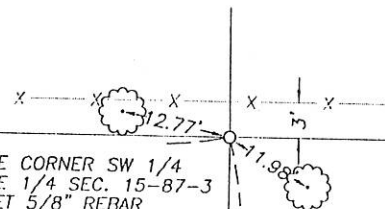
PLAN VIEW

NW CORNER SW 1/4
NE 1/4 SEC. 15-87-3
SET 5/8" REBAR
W/PLASTIC CAP
ALL TIES ARE
NAIL & FLASHER
IN TREES



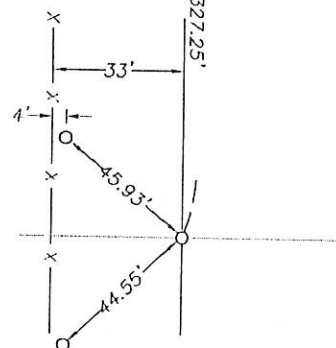
S89°07'58"E 1329.82'

NE CORNER SW 1/4
NE 1/4 SEC. 15-87-3
SET 5/8" REBAR
W/PLASTIC CAP
ALL TIES ARE
NAIL & FLASHER
IN TREES



S00°14'11"E 1327.25'

SE CORNER SW 1/4
NE 1/4 SEC. 15-87-3
SET 5/8" REBAR
W/PLASTIC CAP
ALL TIES ARE
5/8" REBAR



FILE NO. 01-1690
BOOK 1 PAGE 474
01 MAY -4 AM 11:36
PHYLLIS M. GERLACH
JACKSON COUNTY, IOWA
RECORDER
#266

Project No. 2001054

I hereby certify that the survey work was completed and this land surveying document was prepared by me or under my direct personal supervision and that I am a duly registered land surveyor under the laws of the State of Iowa.

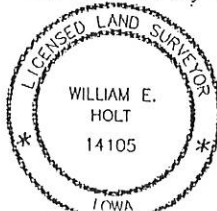
Signature: William E. Holt

William E. Holt

Iowa Registration No. 14105

My Registration Renews on December 31, 2002

Dated this 13th day of APRIL, 2001 C.E.



Corners to be Indexed

Corner	Section	Twsp	Range
NW Corner SW 1/4 NE 1/4	15	87N	3E
NE Corner SW 1/4 NE 1/4	15	87N	3E
SE Corner SW 1/4 NE 1/4	15	87N	3E