

## UNITED STATES PUBLIC LAND SURVEY CORNER CERTIFICATE

OF

Land Survey Monuments situated in Section 14, Township 87 N., Range 3 E., of the Fifth Principal Meridian, JACKSON County, Iowa.  
 Previously recorded in \_\_\_\_\_ in County Recorder's Office.

(book, page, document number, etc.)

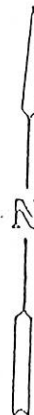
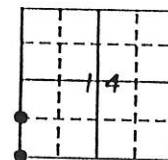
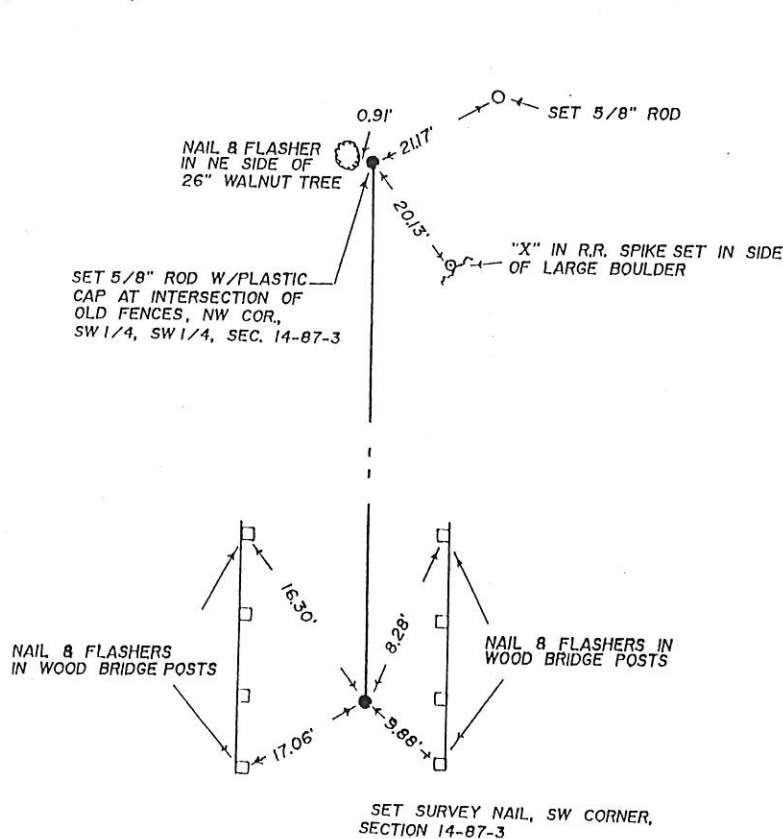
(Show reason for preparing this certificate, the evidence and detailed procedures used in establishing the corner positions and monumentation found or placed.)

Monument Description and Remarks: SW CORNER = SET SURVEY NAILNW COR., SW 1/4, SW 1/4 = SET 5/8" STEEL ROD

(CORNERS WERE ESTABLISHED BY USING OLD EXISTING FENCELINES,  
 PROPORTIONAL MEASUREMENTS AND COLLATERAL EVIDENCE).

## PLAN - VIEW

(Show a minimum of three reference ties to durable physical objects, relevant monuments and physical conditions that will enable recovery of the corner.)



JOB #3507

I hereby certify that the survey work was completed and this land surveying document was prepared by me or under my direct personal supervision and that I am a duly registered land surveyor under the laws of the state of Iowa

Signature: LaVerne F. Vander Schaaf  
 Name typed or printed: LAVERNE F. VANDER SCHAAF

Date: 6/13/95 Reg. No. 11084

My registration renewal date is December 31, 1996

SEAL



Corners	List Corners to be Indexed Section	Twp	Range
SW COR.	14	87	3
NW, SW 1/4, SW 1/4	14	87	3

FILE NO 000167  
 BOOK L PAGE 245

1995 JUL 20 PM 3:19

SHIRLY RITEHOUR  
 JACKSON COUNTY, IOWA  
 RECORDER

11084

FILE NO. **01 3166**  
 PAGE **483**

01 AUG -1 AM 10:12

PHYLLIS M. GERLACH  
 JACKSON COUNTY, IOWA  
 RECORDER *Feb 6.00*

Prepared by: SCHNEIDER Land Surveying and Planning P.O.Box105 Peosta, Iowa 52068 Ph#319-556-9055

# UNITED STATES PUBLIC LAND SURVEY CORNER CERTIFICATE OF

Land Survey Monuments situated in Section 14, Township 87 North, Range 3 East  
 of the Fifth Principal Meridian, Jackson County, Iowa.  
 Previously recorded NONE OF RECORD

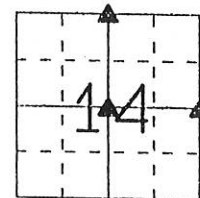
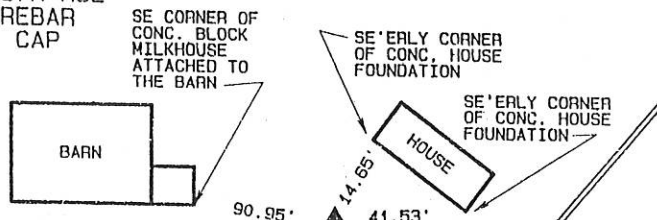
(Show reason for preparing this certificate, the evidence and detailed procedures used in establishing the corner positions and monumentation found or placed.)

Monument Description and Remarks: THE N1/4 CORNER OF SEC. 14 WAS RE-ESTABLISHED BY INTERSECTING A LINE FROM THE THEORETICAL NE CORNER OF SECTION 14 THROUGH A PIPE AT THE NORTHEAST CORNER OF THE WEST 28 RODS OF THE NW1/4, NE1/4, OF SECTION 14 AND A LINE 28 RODS WESTERLY OF TWO IRON PINS IN AN OCCUPATION LINE FENCE KNOWN AS THE EAST LINE OF SAID WEST 28 RODS. THE E1/4 CORNER OF SEC. 14 WAS PLACED IN THE OCCUPATION FENCE LINE AT A DISTANCE SPLIT BETWEEN THE SE CORNER AND THE THEORETICAL NE CORNER OF SEC. 14 THE CENTER OF SEC. 14 WAS ESTABLISHED 28 RODS WEST OF AN OCCUPATION FENCE KNOWN AS THE EAST LINE OF THE WEST 28 RODS OF THE NE1/4 OF SEC. 14 ON A E-W LINE FROM THE E1/4 CORNER TO THE THEORETICAL W1/4 WHICH WAS ESTABLISHED BY DOUBLING THE DISTANCE FROM THE NW CORNER OF SEC. 14 THROUGH THE 1/4-1/4 CORNER SOUTH OF SAID NW CORNER.

## PLAN - VIEW

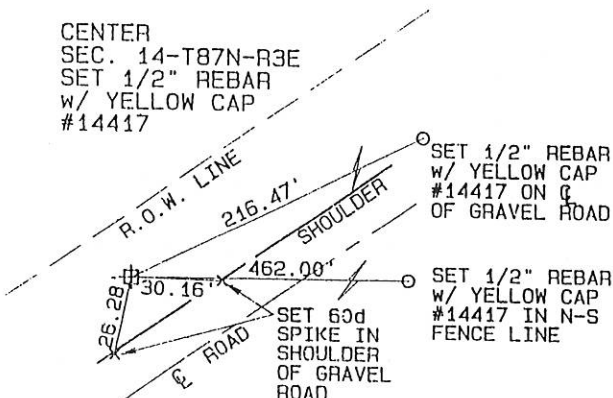
(Show a minimum of three reference ties to durable physical objects, relevant monuments and physical conditions that will enable recovery of the corner.)

N1/4 CORNER  
 SEC. 14-T87N-R3E  
 SET 1/2" REBAR  
 W/ YELLOW CAP  
 #14417



SET 'X' NAILS  
 IN TOP OF  
 WOOD FENCE  
 POST

CENTER  
 SEC. 14-T87N-R3E  
 SET 1/2" REBAR  
 W/ YELLOW CAP  
 #14417



SET 1/2" REBAR  
 W/ YELLOW CAP  
 #14417 ON E  
 OF GRAVEL ROAD

SET 1/2" REBAR  
 W/ YELLOW CAP  
 #14417 IN N-S  
 FENCE LINE

E1/4 CORNER  
 SEC. 14-T87N-R3E  
 SET 1/2" REBAR  
 W/ YELLOW CAP  
 #14417

8.92'  
 2.83'  
 STEEL  
 FENCE  
 POST

142.98'

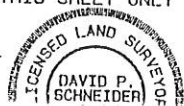
SET 'X' NAILS  
 IN TOP OF  
 WOOD FENCE  
 POST

I hereby certify that this land surveying document was prepared and the related survey work was performed by me or under my direct personal supervision and that I am a duly licensed Land Surveyor under the laws of the State of Iowa.

*David P. Schneider* 7/25/2001  
 David P. Schneider P.L.S. #14417 Date:  
 My license renewal date is December 31, 2001.

Pages or sheets covered by this seal: THIS SHEET ONLY

SEAL



## List Corners to be Indexed

Corners	Section	Twp	Range
N1/4	14	87N	3E
CENTER	14	87N	3E
E1/4	14	87N	3E

FILE NO 01 3167  
BOOK 1 PAGE 427

01 AUG -1 AM 10:12

PHYLLIS M. GERLACH  
JACKSON COUNTY, IOWA  
RECORDER

fu 6.00

Prepared by: SCHNEIDER Land Surveying and Planning P.O.Box105 Peosta, Iowa 52068 Ph#319-556-9055

### UNITED STATES PUBLIC LAND SURVEY CORNER CERTIFICATE OF

Land Survey Monuments situated in Section 14, Township 87 North, Range 3 East  
of the Fifth Principal Meridian, Jackson County, Iowa.  
Previously recorded NONE OF RECORD

(BOOK, PAGE / INST. NO. / CABINET, BLTOK)

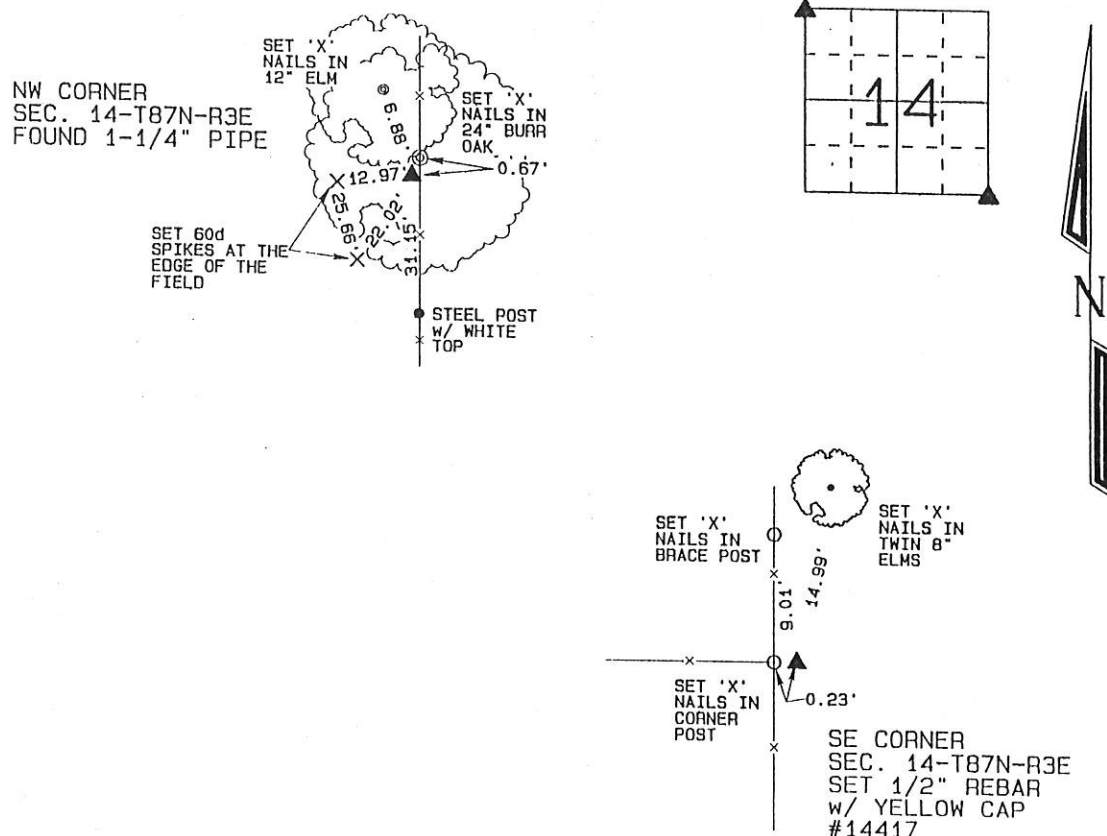
(Show reason for preparing this certificate, the evidence and detailed procedures used in establishing the corner positions and monumentation found or placed.)

Monument Description and Remarks: THE NW CORNER OF SEC. 14-T87N-R3E WAS FOUND AND TIED AS SHOWN  
ON A SURVEY FILED NOVEMBER 24, 1965 IN BOOK 1-A AT PAGE 121. NO MONUMENT WAS FOUND AT THE SE CORNER OF

SEC. 14-T87N-R3E. A 1/2" REBAR W/ YELLOW CAP #14417 WAS SET AT THE INTERSECTION OF OCCUPATION FENCES NORTH,  
SOUTH AND WEST OF THE CORNER.

### PLAN - VIEW

(Show a minimum of three reference ties to durable physical objects, relevant monuments and physical conditions that will enable recovery of the corner.)



I hereby certify that this land surveying document was prepared and the related survey work was performed by me or under my direct personal supervision and that I am a duly licensed Land Surveyor under the laws of the State of Iowa.

*David P. Schneider* 7/25/2001  
David P. Schneider P.L.S. #14417 Date:  
My license renewal date is December 31, 2001.

Pages or sheets covered by this seal: THIS SHEET ONLY

SEAL



### List Corners to be Indexed

Corners	Section	Twp	Range
NW	14	87N	3E
SE	14	87N	3E

Prepared by: SCHNEIDER Land Surveying and Planning, Inc. P.O. Box 128 Farley, Iowa 52046 563-744-3631

## UNITED STATES PUBLIC LAND SURVEY CORNER CERTIFICATE OF

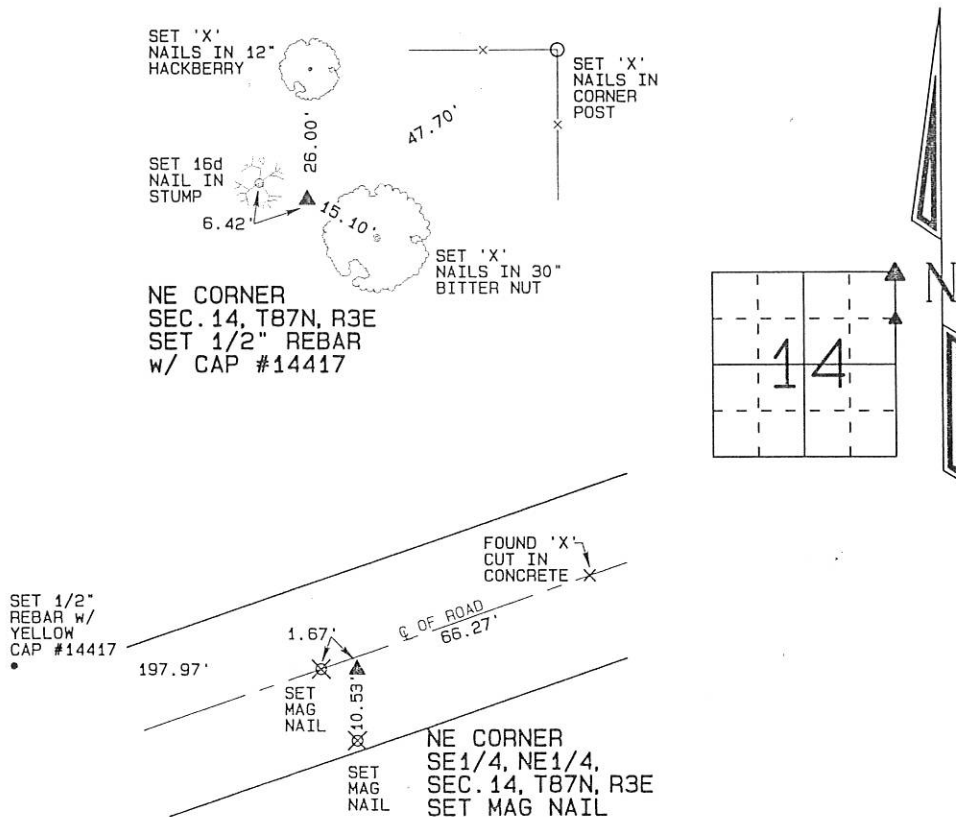
Land Survey Monuments situated in Section 14, Township 87 North, Range 3 East  
of the Fifth Principal Meridian, Jackson County, Iowa.

Previously recorded (NONE OF RECORD)  
(BOOK, PAGE / INST. NO. / CABINET, SLIDE)

Monument Description and Remarks: THE NE CORNER OF SECTION 14, T87N, R3E WAS ESTABLISHED  
USING ALIGNMENT FROM SECTION CORNERS TO THE EAST AND OCCUPATION EVIDENCE TO THE SOUTH.

THE NE CORNER OF THE SE1/4 OF THE NE1/4 OF SECTION 14, T87N, R3E WAS ESTABLISHED MIDWAY FROM THE E1/4 CORNER  
TO THE NE CORNER OF SAID SECTION 14 AND BY USING OCCUPATION EVIDENCE TO THE NORTH AND SOUTH.

### PLAN - VIEW



I hereby certify that this land surveying document was prepared and the related survey work was performed by me or under my direct personal supervision and that I am a duly licensed Land Surveyor under the laws of the State of Iowa.

David P. Schneider P.L.S. #14417

Date:

My license renewal date is December 31, 2019.

Pages or sheets covered by this seal: THIS SHEET ONLY

**SCHNEIDER**  
Land Surveying & Planning, Inc.

P.O. Box 128 Farley, Iowa 52046  
Ph. #563-744-3631 Email daves@yousq.net



#### List Corners to be Indexed

Corners	Section	Twp	Range
NE CORNER	14	87N	3E
NE CORNER SE1/4, NE1/4	14	87N	3E

JOB NO. 2091