

UNITED STATES PUBLIC LAND SURVEY CORNER CERTIFICATE OF

LAND SURVEY MONUMENTS SITUATED IN SECTION 13, TOWNSHIP 87 NORTH, RANGE 3 EAST
OF THE FIFTH PRINCIPAL MERIDIAN, JACKSON COUNTY, IOWA.
PREVIOUSLY RECORDED IN _____ IN COUNTY RECORDER'S OFFICE.

(Show reason for preparing this certificate, the evidence and detailed procedures used in establishing the corner positions and monumentation found or placed.)

Monument Description and Remarks:

NW CORNER, NE 1/4, NW 1/4, SECTION 13, T87N, R3E - FOUND IRON PIPE

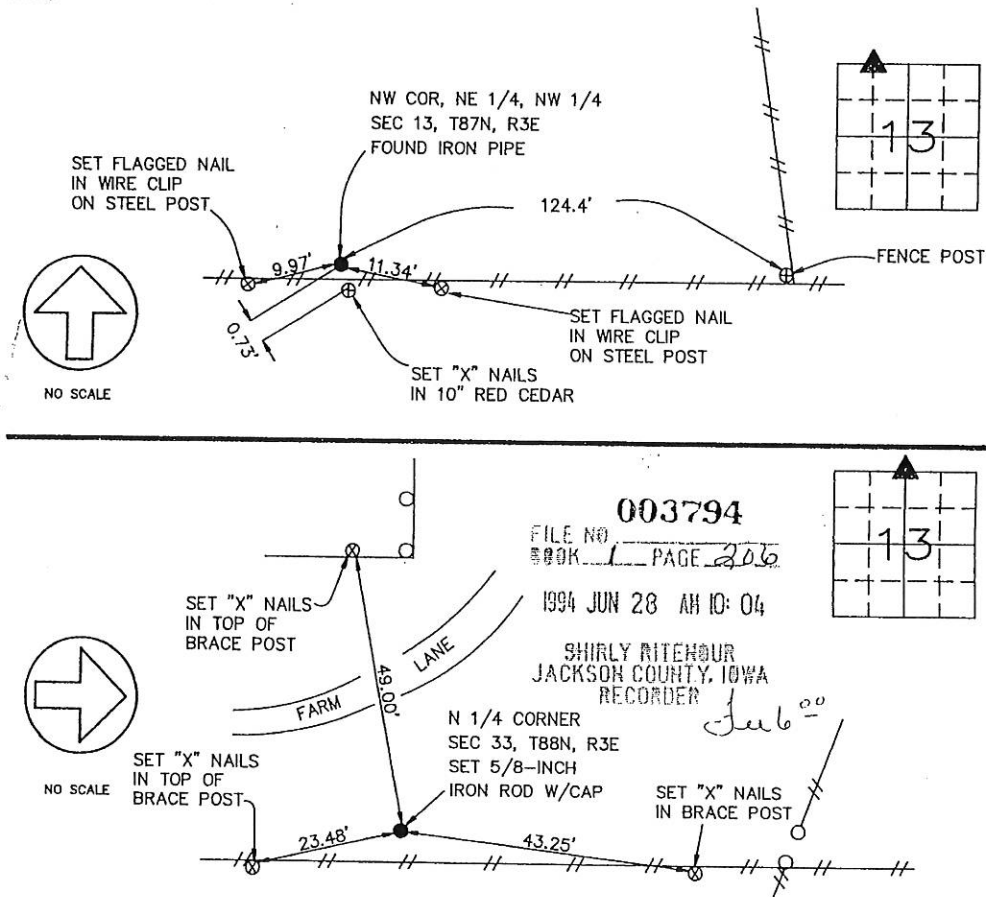
N 1/4 CORNER, SECTION 13, T87N, R3E - SET 5/8-INCH IRON ROD W/CAP

AS ESTABLISHED PER THE PLAT OF "SYLVAN HERRIG PLACE" AS RECORDED

IN BOOK 1-F, PAGE 69 IN THE JACKSON COUNTY RECORDER'S OFFICE.

PLAN - VIEW

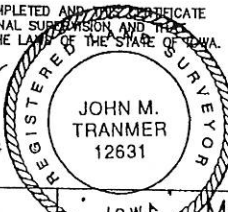
(Show a minimum of three reference ties to durable physical objects, relevant monuments and physical conditions that will enable recovery of the corner.)



I HEREBY CERTIFY THAT THE SURVEY WORK WAS COMPLETED AND THIS CERTIFICATE
WAS PREPARED BY ME OR UNDER MY DIRECT PERSONAL SUPERVISION AND THAT
I AM A DULY REGISTERED LAND SURVEYOR UNDER THE LAWS OF THE STATE OF IOWA.

John M. Tranmer
JOHN M. TRANMER
REG. NO. 12631

DATE: JUNE 20, 1994
MY REGISTRATION EXPIRES DECEMBER 31, 1994



LIST CORNERS TO BE INDEXED

CORNERS	SECTION	TWP	RANGE
NW COR, NE1/4, NW1/4,	13	T87N	R3E
N1/4 CORNER	13	T87N	R3E

<p>ENGINEERS AND SURVEYORS P.C.</p> <p><small>Iowa, Illinois, Wisconsin 4155 Pennsylvania Ave. Dubuque, Ia. 52002 (319) 556-2464 Guttenberg, IA Galena, IL</small></p>	<p>MONUMENT RECORD</p> <p>COUNTY: <u>JACKSON</u></p> <p>TOWNSHIP: <u>PRAIRIE SPRINGS</u></p>		
	<p>DATE: <u>6-15-94</u></p>	<p>FIELD BOOK NO. <u>253</u></p>	<p>PROJ. NO. <u>94740</u></p>