

FILE NO 03-1506  
PAGE 622

03 MAR 19 AM 8:34

PHYLLIS M. GERLACH  
JACKSON COUNTY, IOWA  
RECORDER

Prepared by Wm. Burger Land Surveyors

516 3rd Street West Court, Worthington, Iowa

Phone 319 - 853 2028

*See*

# UNITED STATES PUBLIC LAND SURVEY CORNER CERTIFICATE

Land Survey Monuments situated in Section 10, Township 87N, Range 3E, of the Fifth Principal Meridian, Jackson County, Iowa. Previously recorded in N/A in the Office of the County Recorder

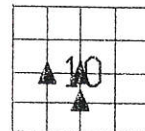
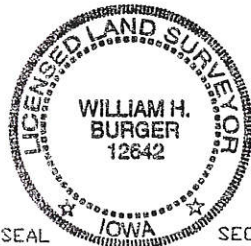
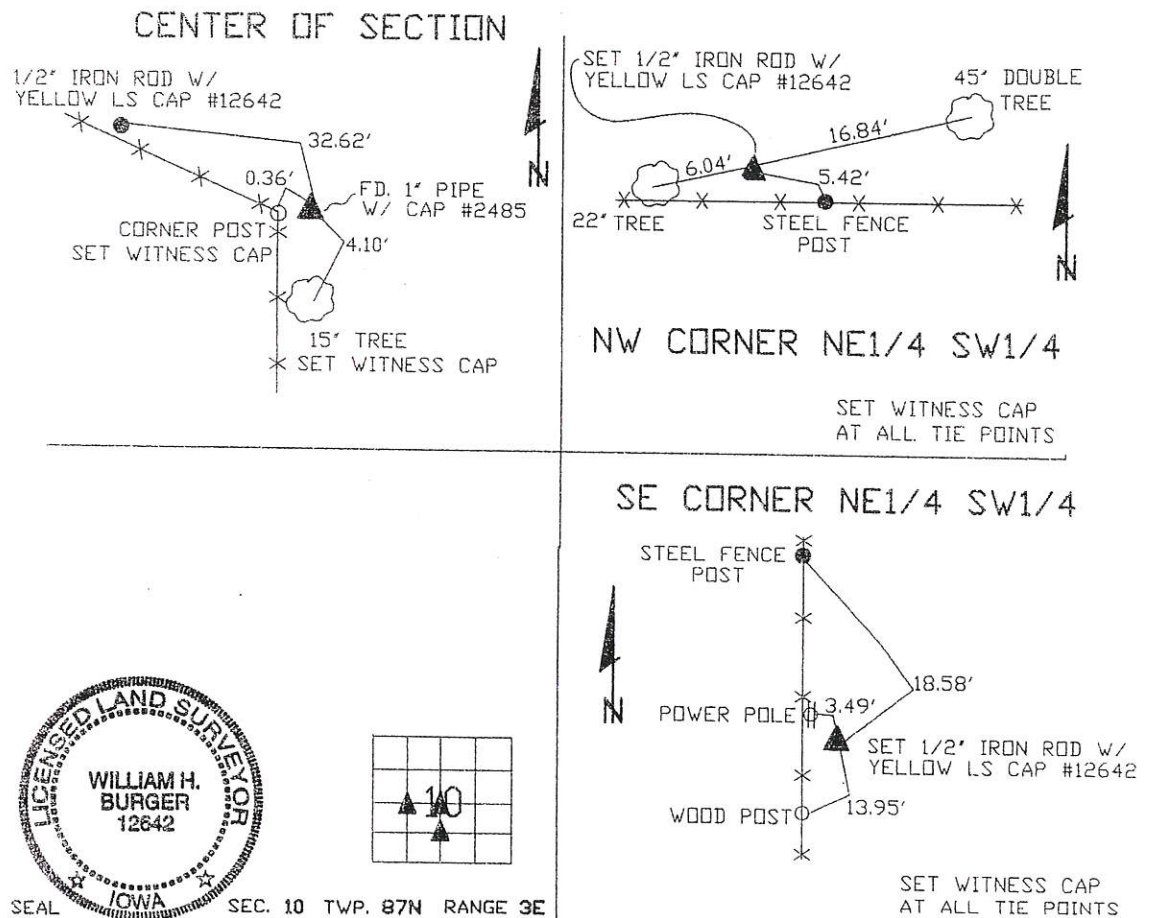
Monument Description and Remarks: (No Corner Certificates Found at the County Recorders Office)

NW CORNER NE1/4 SW1/4 - SET 1/2" IRON ROD W/YELLOW LS CAP #12642 - RUN STRAIGHT LINES FROM OPPOSITE 1/4 1/4 CORNERS AND SET AT POINT OF INTERSECTION; SEARCHED AREA BUT NOTHING WAS FOUND

NW CORNER NE1/4 SW1/4 - SET 1/2" IRON ROD W/YELLOW LS CAP - USED INFORMATION FROM EXISTING PLAT RECORDED IN THE OFFICE OF THE JACKSON COUNTY RECORDER IN BOOK K, ON PAGE 18 AND USED EXISTING FENCELINE EVIDENCE; SEARCHED AREA BUT NOTHING WAS FOUND

CENTER OF SECTION - FD. 1" PIPE W/YELLOW LS CAP #2485

## PLAN VIEW



I hereby certify that this land surveying document was prepared and related survey work was performed by me or under my direct personal supervision and that I am a duly licensed Land Surveyor under the laws of the State of Iowa.

*William H. Burger* 3/18/03  
Date

William H. Burger

License number 12642

My license renewal date is December 31, 2004

Pages or Sheets covered by this seal: Sheet 1 of 1

## CORNERS TO BE INDEXED

NW CORNER NE1/4 SW1/4	10	87N	3E
SE CORNER NE1/4 SW1/4	10	87N	3E
CENTER OF SECTION	10	87N	3E



Document 12-1814

Book 3 Page 45 Type 15 001 Pages 1  
Date 5/01/2012 Time 9:51 AM  
Rec Amt \$7.00

ARLENE SCHAUF, RECORDER/REGISTRAR  
JACKSON COUNTY IOWA

Prepared by Wm. Burger LandSurveyor 510 3rd Street West Court, Worthington, Iowa 52078 Phone 563 - 855 2028

### UNITED STATES PUBLIC LAND SURVEY CORNER CERTIFICATE

Land Survey Monuments situated in Section 10, Township 87N, Range 3E, of the Fifth Principal Meridian, Jackson County, Iowa. Previously recorded in SEE NOTE in the Office of the County Recorder

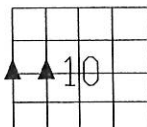
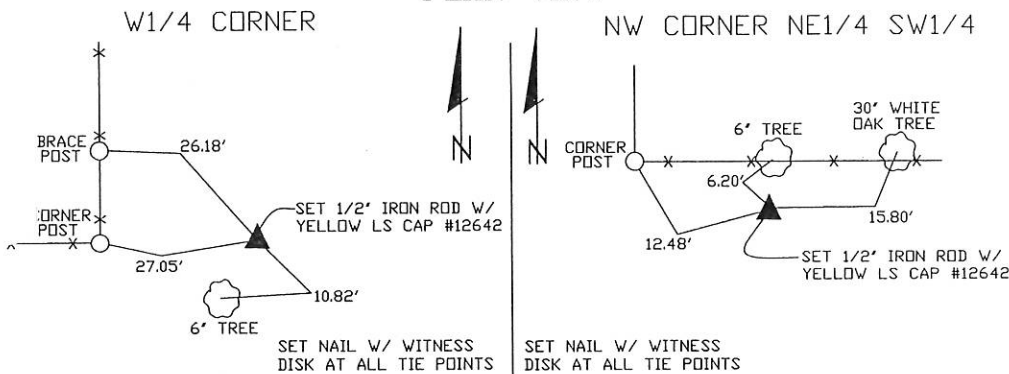
Monument Description and Remarks: (No Corner Certificates found at the County Recorders Office)

W1/4 CORNER - SET 1/2" IRON ROD W/ YELLOW LS CAP #12642 - SET ON LINE AND MIDWAY BETWEEN THE SW CORNER AND THE NW CORNER

NW CORNER NE1/4 SW1/4 - SET 1/2" IRON ROD W/ YELLOW LS CAP #12642 - USED INFORMATION FROM PLAT RECORDED IN PLAT BOOK 1-K, PAGE 14 TO RESET THIS CORNER

NOTE: THE NW CORNER NE1/4 SW1/4 WAS PREVIOUSLY TIED IN BOOK 1, PAGE 622

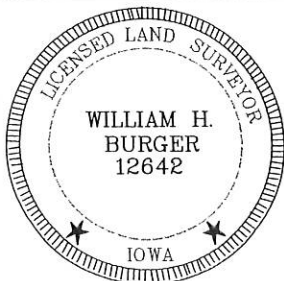
#### PLAN VIEW



SEC. 10 TWP. 87N RANGE 3E

#### CORNERS TO BE INDEXED

Corner	Section	Township	Range
W1/4 CORNER	10	87N	3E
NW CORNER NE1/4 SW1/4	10	87N	3E



I hereby certify that this land surveying document was prepared and related survey work was performed by me or under my direct personal supervision and that I am a duly licensed Land Surveyor under the laws of the State of Iowa.

William H. Burger 3/23/12  
William H. Burger Date

License number 12642

My license renewal date is December 31, 2012

Pages or Sheets covered by this seal: Sheet 1 of 1