



Document 09-4866

Book 2 Page 694 Type 15 001 Pages 1
Date 12/21/2009 Time 11:01 AM
Rec Amt \$9.00

ARLENE SCHAUF, RECORDER/REGISTRAR
JACKSON COUNTY IOWA

Prepared by: SCHNEIDER Land Surveying and Planning, Inc. P.O. Box 128 Farley, Iowa 52046 563-744-3631

UNITED STATES PUBLIC LAND SURVEY CORNER CERTIFICATE OF

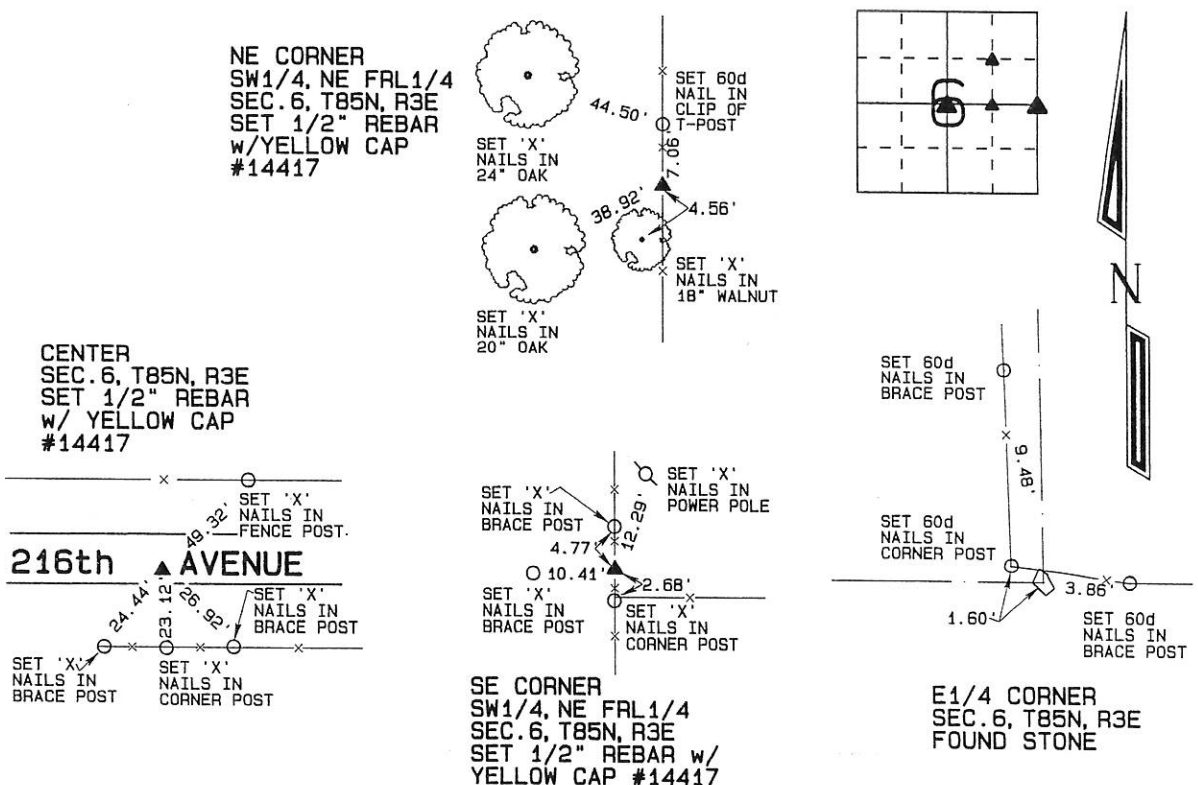
Land Survey Monuments situated in Section 6, Township 85 North, Range 3 East
of the Fifth Principal Meridian, Jackson County, Iowa.
Previously recorded (NONE OF RECORD)

(Show reason for preparing this certificate, the evidence and detailed procedures used in establishing the corner positions and monumentation found or placed.)

Monument Description and Remarks: A STONE WAS FOUND AT THE E1/4 CORNER OF SECTION 6, T85N, R3E AND TIED AS THE CORNER. THE CENTER OF SECTION 6, T85N, R3E WAS REESTABLISHED AS DESCRIBED IN AN EASEMENT FOR PUBLIC HIGHWAY FILED NOVEMBER 27, 1953 IN EASEMENT RECORD NO.2 AT PAGE 305. THE SOUTHEAST CORNER OF THE SW1/4 OF THE NE FRACTIONAL 1/4 OF SECTION 6, T85N, R3E WAS ESTABLISHED ON LINE FROM THE E1/4 CORNER TO THE CENTER OF SAID SECTION 6, AND IN LINE WITH OCCUPATION EVIDENCE LOCATED NORTH AND SOUTH OF THE CORNER. THE NE CORNER OF THE SW1/4 OF THE NE FRACTIONAL 1/4 OF SECTION 6, T85N, R3E WAS ESTABLISHED AT THE THEORETICAL CENTER OF THE NE FRACTIONAL 1/4 OF SAID SECTION 6, ASSUMING A 72 FOOT ERROR IN THE NORTH-SOUTH LOCATION OF THE W1/4 CORNER.

PLAN - VIEW

(Show a minimum of three reference ties to durable physical objects, relevant monuments and physical conditions that will enable recovery of the corner.)



I hereby certify that this land surveying document was prepared and the related survey work was performed by me or under my direct personal supervision and that I am a duly licensed Land Surveyor under the laws of the State of Iowa.

David P. Schneider
David P. Schneider P.L.S. #14417 Date: 12/16/2009
My license renewal date is December 31, 2009.

Pages or sheets covered by this seal: THIS SHEET ONLY

SCHNEIDER
Land Surveying & Planning

P.O. Box 128 Farley, Iowa 52046
Ph. #563-744-3631 Fax #563-744-3629



List Corners to be Indexed

Corners	Section	Twp	Range
NE CORNER SW1/4, NE FRL1/4	6	85N	3E
SE CORNER SW1/4, NE FRL1/4	6	85N	3E
CENTER	6	85N	3E
E1/4	6	85N	3E

Book 2 Page 694 JOB NO. 1334a