



Document 05-3919

Book 2 Page 390 Type 06 023 Pages 1  
Date 9/26/2005 Time 11:29 AM  
Rec Amt \$7.00

PHYLLIS M. GERLACH, RECORDER  
JACKSON COUNTY IOWA

Prepared by Vm. Burger LandSurveyors 510 3rd Street West Court, Worthington, Iowa Phone 563 - 855 2028

### UNITED STATES PUBLIC LAND SURVEY CORNER CERTIFICATE

Land Survey Monuments situated in Section 4, Township 85N, Range 3E of the Fifth Principal Meridian, Jackson County, Iowa. Previously recorded in N/A in the Office of the County Recorder

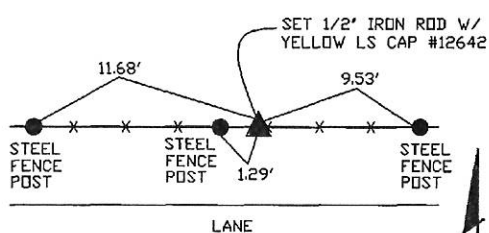
Monument Description and Remarks: (No Corner Certificates found at the County Recorder's Office)

CENTER OF SECTION - SET 1/2" IRON ROD W/ YELLOW LS CAP #12642 - RUN STRAIGHT LINES FROM OPPOSITE 1/4 CORNERS AND SET AT THE POINT OF INTERSECTION

SE CORNER NW1/4 SE1/4 - SET 1/2" IRON ROD W/ YELLOW LS CAP #12642 - RUN STRAIGHT LINES FROM OPPOSITE 1/4 CORNERS AND SET AT THE POINT OF INTERSECTION

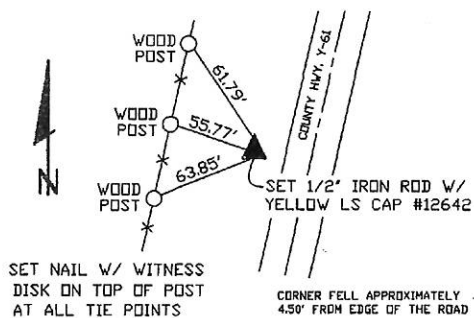
#### PLAN VIEW

##### CENTER OF SECTION



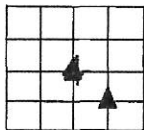
SET NAIL W/ WITNESS  
DISK AT ALL TIE POINTS

##### SE CORNER NW1/4 SE1/4



SET NAIL W/ WITNESS  
DISK ON TOP OF POST  
AT ALL TIE POINTS

CORNER FELL APPROXIMATELY  
4.50' FROM EDGE OF THE ROAD



SEC. 4 TWP. 85N RANGE 3E

#### CORNERS TO BE INDEXED

CORNER	SECTION	TOWNSHIP	RANGE
CENTER OF SECTION	4	85N	3E
SE CORNER NW1/4 SE1/4	4	85N	3E



I hereby certify that this land surveying document was prepared and related survey work was performed by me or under my direct personal supervision and that I am a duly licensed Land Surveyor under the laws of the State of Iowa.

*William H. Burger* 9/13/05  
Date

License number 12642

My license renewal date is December 31, 2006

Pages or Sheets covered by this seal: Sheet 1 of 1



Document 05-3920

Book 2 Page 391 Type 06 023 Pages 1

Date 9/26/2005 Time 11:29 AM

Rec Amt \$7.00

PHYLLIS M. GERLACH, RECORDER  
JACKSON COUNTY IOWA

Prepared by Wm. Burger Land Surveyors 510 3rd Street West Court, Worthington, Iowa Phone 563 - 855 2028

### UNITED STATES PUBLIC LAND SURVEY CORNER CERTIFICATE

Land Survey Monuments situated in Section 4, Township 85N, Range 3E, of the Fifth Principal Meridian, Jackson County, Iowa. Previously recorded in N/A in the Office of the County Recorder

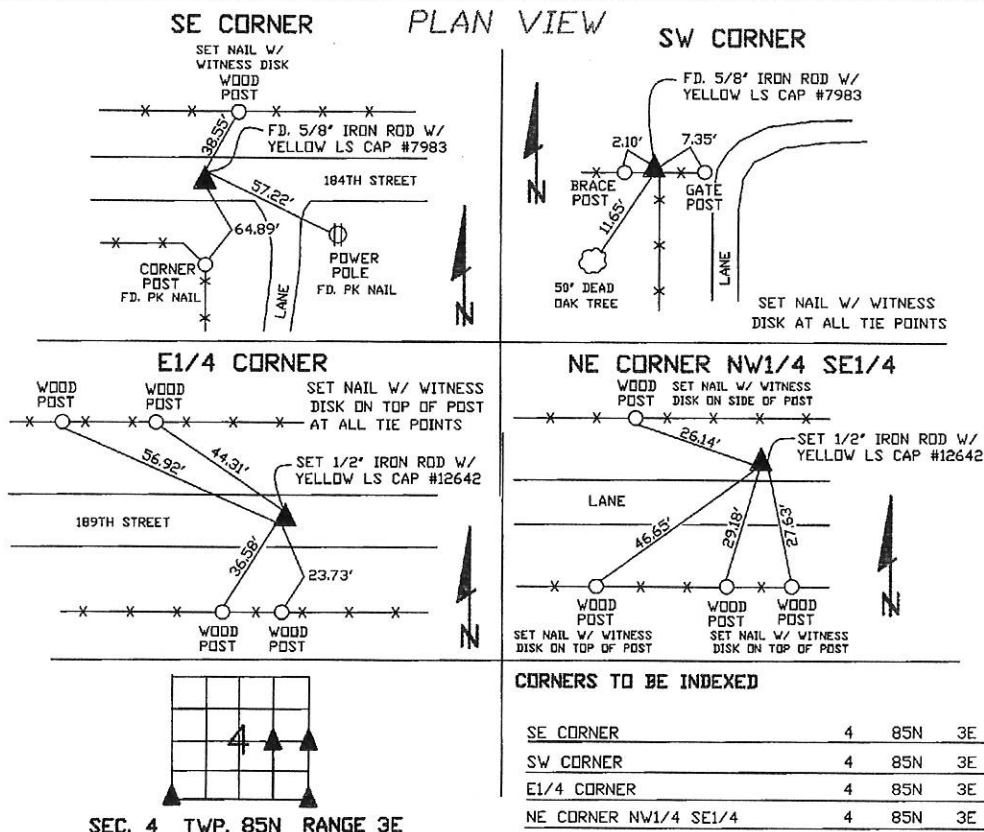
Monument Description and Remarks: (No Corner Certificates found at the County Recorders Office)

SE CORNER - FOUND 5/8" IRON ROD WITH YELLOW LS CAP #7983

SW CORNER - FOUND 5/8" IRON ROD WITH YELLOW LS CAP #7983

E1/4 CORNER - SET 1/2" IRON ROD W/ YELLOW LS CAP #12642 - USED FENCELINE EVIDENCE TO THE WEST AND INTERSECTED WITH LINE BETWEEN THE NE CORNER AND THE SE CORNER

NE CORNER NW1/4 SE1/4 - SET 1/2" IRON ROD W/ YELLOW LS CAP #12642 - SET ON LINE AND MIDWAY BETWEEN THE E1/4 CORNER AND THE CENTER OF SECTION



I hereby certify that this land surveying document was prepared and related survey work was performed by me or under my direct personal supervision and that I am a duly licensed Land Surveyor under the laws of the State of Iowa.

*William H. Burger* 9/23/05  
William H. Burger Date

License number 12642

My license renewal date is December 31, 2006

Pages or Sheets covered by this seal Sheet 1 of 1