



Document 06-1990

Book 2 Page 444 Type 06 023 Pages 1

Date 5/25/2006 Time 9:21 AM

Rec Amt \$7.00

PHYLLIS M. GERLACH, RECORDER
JACKSON COUNTY IOWA

PREPARED BY: MICHAEL J. WEBER, WEBER SURVEYING, LLC, 26789 46TH AVE, BERNARD, IA 52032 (563) 879-4173

UNITED STATES PUBLIC LAND SURVEY CORNER CERTIFICATE OF

LAND SURVEY MONUMENTS SITUATED IN SECTION 3, TOWNSHIP 85 NORTH, RANGE 3 EAST
OF THE FIFTH PRINCIPAL MERIDIAN, JACKSON COUNTY, IOWA.
PREVIOUSLY RECORDED NONE UNLESS OTHERWISE NOTED
(book, page, document number, etc.)

(Show reason for preparing this certificate, the evidence and detailed procedures used in establishing the corner positions and monumentation found or placed.)

Monument Description and Remarks:

THE FOLLOWING CORNERS ARE SHOWN ON THE PLAT OF SURVEY OF PARCEL A IN SECTION 3, T.85N. R.3E. OF THE 5TH PM IN JACKSON COUNTY, IOWA

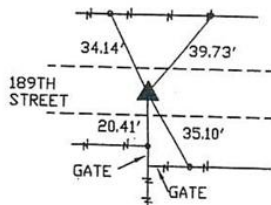
-CENTER. SEC. 3 PLACED A 5/8" DIA STEEL REROD W/ORANGE CAP MARKED 'WEBER PLS 15084'.
ESTABLISHED CORNER IN THE CENTER OF 189TH STREET ROAD RIGHT OF WAY IN LINE WITH THE
OCCUPATION FENCELINE TO THE SOUTH

-SW COR. ^{SE}NE-NW SEC. 3, PLACED A 5/8" DIA STEEL REROD W/ORANGE CAP MARKED 'WEBER PLS 15084' ONLINE AND MIDWAY BETWEEN THE CENTER AND W 1/4 CORNER AS SHOWN IN CORNER
CERTIFICATE IN BOOK 2 PAGE 391, AND DOCUMENT NO. 05-3920

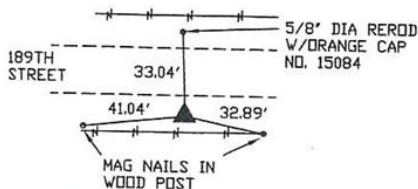
-NW COR. ^{SE}NE-NW SEC. 3, PLACED A 5/8" DIA STEEL REROD W/ORANGE CAP MARKED 'WEBER PLS 15084' ESTABLISHED CORNER BY DIVIDING THE NW 1/4 SEC. 3

(Show a minimum of three reference ties to durable physical objects, relevant monuments and physical conditions that will enable recovery of the corner.)

PLAN - VIEW



CENTER. SEC. 3 PLACED A 5/8" DIA
STEEL REROD W/ORANGE CAP MARKED
'WEBER PLS 15084'

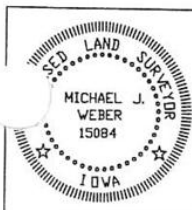


SW COR. ^{SE}NE-NW SEC. 3, PLACED A 5/8"
DIA STEEL REROD W/ORANGE CAP
MARKED 'WEBER PLS 15084'



NW COR. ^{SE}NE-NW SEC. 3, PLACED A 5/8"
DIA STEEL REROD W/ORANGE CAP MARKED
'WEBER PLS 15084'

DWG. NO. KLOCKE



I HEREBY CERTIFY THAT THIS LAND SURVEYING DOCUMENT WAS
PREPARED AND THE RELATED SURVEY WORK WAS PERFORMED BY ME OR
UNDER MY DIRECT PERSONAL SUPERVISION AND THAT I AM A DULY
LICENSED LAND SURVEYOR UNDER THE LAWS OF THE STATE OF IOWA.

Michael J. Weber
MICHAEL J. WEBER

April 4, 2006
(DATE)

LICENSE NUMBER 15084

MY LICENSE RENEWAL DATE IS DECEMBER 31, 2007

SHEETS COVERED BY THIS SEAL: Third Sheet Only

List Corners to be Indexed

Corner	Sec	Twp	Range
CENTER	3	85N	3E
NW Cor. SE-NW	3	85N	3E
SW Cor. SE-NW	3	85N	3E

Book 2 Page 444



Document 12-862

Book 3 Page 35 Type 15 001 Pages 1
Date 2/29/2012 Time 10:53 AM
Rec Amt \$7.00

ARLENE SCHAUF, RECORDER/REGISTRAR
JACKSON COUNTY IOWA

Prepared by: SCHNEIDER Land Surveying and Planning, Inc. P.O. Box 120 Farley, Iowa 52046 563-744-3631

UNITED STATES PUBLIC LAND SURVEY CORNER CERTIFICATE OF

Land Survey Monuments situated in Section 3, Township 85 North, Range 3 East
of the Fifth Principal Meridian, Jackson County, Iowa.
Previously recorded

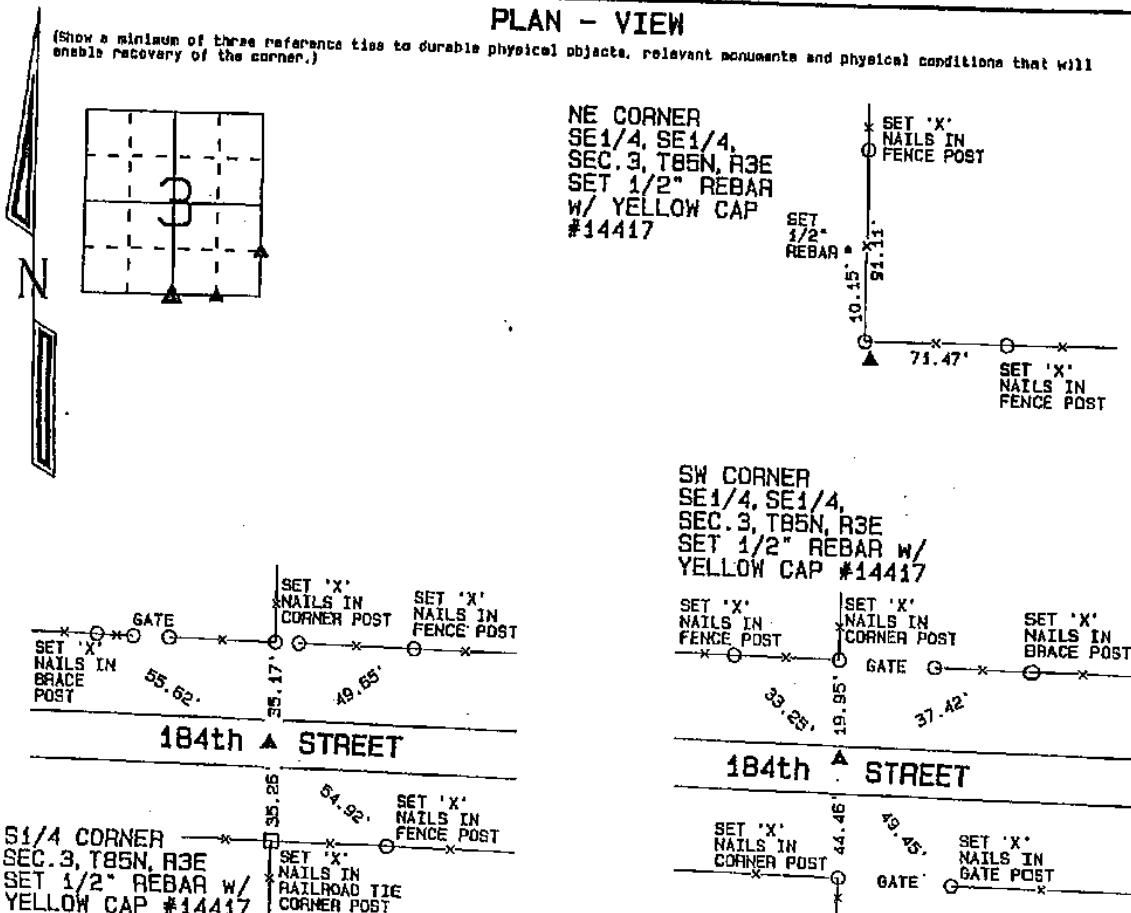
(NAME OF RECORD)

(Show reason for preparing this certificate, the evidence and detailed procedures used in establishing the corner positions and monumentation found or placed.)

Monument Description and Remarks: THE S1/4 CORNER OF SECTION 3, T85N, R3E WAS ESTABLISHED IN THE CENTER OF 184th STREET AND IN LINE WITH OCCUPATION EVIDENCE TO THE NORTH AND SOUTH. THE SOUTHWEST CORNER OF THE SE1/4 OF THE SE1/4 OF SECTION 3, T85N, R3E WAS ESTABLISHED AT THE MIDPOINT OF A LINE FROM THE S1/4 CORNER TO THE SE CORNER OF SAID SECTION 3. THE NE CORNER OF THE SE1/4 OF THE SE1/4 OF SECTION 3, T85N, R3E WAS ESTABLISHED ON A LINE FROM THE SE CORNER TO THE E1/4 CORNER AND USING OCCUPATION EVIDENCE LOCATED TO THE EAST OF THE CORNER.

PLAN - VIEW

(Show a minimum of three reference ties to durable physical objects, relevant monuments and physical conditions that will enable recovery of the corner.)



I hereby certify that this land surveying document was prepared and the related survey work was performed by me or under my direct personal supervision and that I am a duly licensed Land Surveyor under the laws of the State of Iowa.

David P. Schneider P.L.S. #14417 Date: 2/27/2012
My license renewal date is December 31, 2013.
Pages or sheets covered by this seal: THIS SHEET ONLY

SCHNEIDER
Land Surveying & Planning, Inc.
P.O. Box 120 Farley, Iowa 52046
Ph. #563-744-3631 Fax #563-744-3629



List Corners to be Indexed

Corners	Section	Twp	Range
S1/4 CORNER	3	85N	3E
SW CORNER	3	85N	3E
SE1/4, SE1/4	3	85N	3E
NE CORNER	3	85N	3E
SE1/4, SE1/4	3	85N	3E



Document 20-5267

Type 15 001

Pages 1

Date 12/09/2020 Time 1:54 PM

Rec Amt \$7.00

ARLENE SCHAUF, RECORDER/REGISTRAR
JACKSON COUNTY IOWA

PREPARED BY: MICHAEL J. WEBER, WEBER SURVEYING, LLC, 26789 46TH AVE, BERNARD, IA 52032 (563) 879-4173

UNITED STATES PUBLIC LAND SURVEY CORNER CERTIFICATE OF

LAND SURVEY MONUMENTS SITUATED IN SECTION 3, TOWNSHIP 85 NORTH, RANGE 3 EAST
OF THE FIFTH PRINCIPAL MERIDIAN, JACKSON COUNTY, IOWA.
PREVIOUSLY RECORDED NONE

(Book, page, document number, etc.)

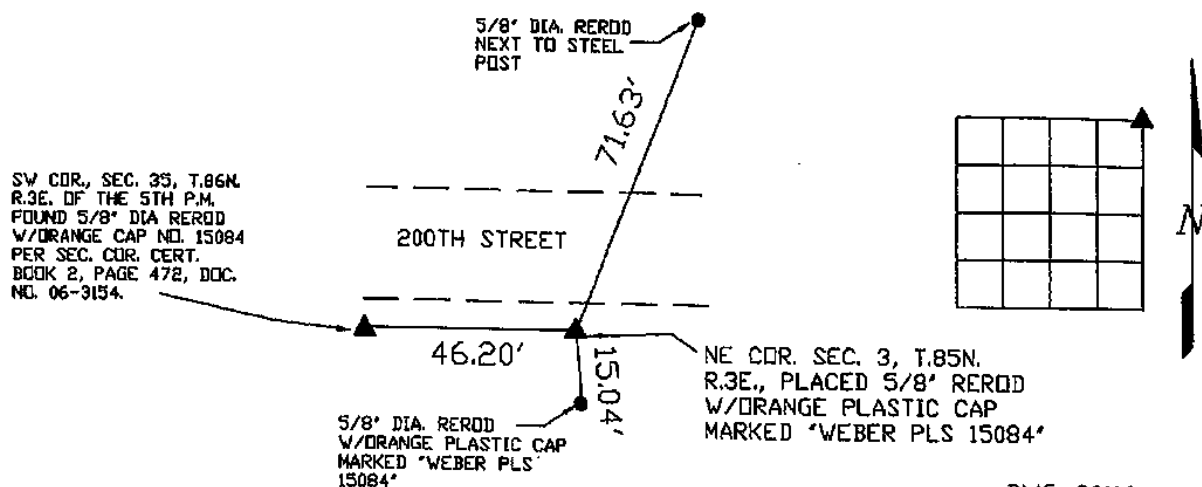
(Show reason for preparing this certificate, the evidence and detailed procedures used in establishing the corner positions and monumentation found or placed.)

Monument Description and Remarks:

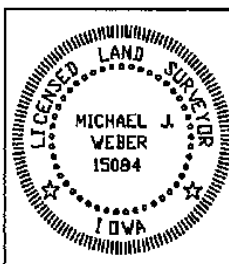
NE COR. SECTION 3, T.85N. R.3E. OF THE 5TH P.M., PLACED 5/8" DIA. REROD W/ORANGE PLASTIC CAP
MARKED "WEBER PLS 15084", ESTABLISHED CORNER 70 LINKS(46.2') EAST OF THE SW CORNER OF SECTION
35, T.86N. R.3E. OF THE 5TH P.M. ON THE SOUTH LINE OF SAID SECTION 35

PLAN - VIEW

(Show a minimum of three reference ties to durable physical objects, relevant monuments and physical conditions that will enable recovery of the corner.)



DWG: 20116



I HEREBY CERTIFY THAT THIS LAND SURVEYING DOCUMENT WAS
PREPARED AND THE RELATED SURVEY WORK WAS PERFORMED BY ME OR
UNDER MY DIRECT PERSONAL SUPERVISION AND THAT I AM A FULLY
LICENSED LAND SURVEYOR UNDER THE LAWS OF THE STATE OF IOWA.

Michael J. Weber *December 8, 2020*
MICHAEL J. WEBER (DATE)
LICENSE NUMBER 15084

MY LICENSE RENEWAL DATE IS DECEMBER 31, 2021

SHEETS COVERED BY THIS SEAL: *This sheet only*

List Corners to be Indexed
Corner Sec Twp Range
NE COR. 3-85N-3E