

Sec 2

LAND T-85-N CORNER SURVEY R-38.4-W

MADE FOR IOWA STATE HIGHWAY COMMISSION FOR PURPOSE OF ROW DESCRIPTIONS ON IOWA PRIMARY ROAD NO. 62 NORTHEAST FROM THE TOWN OF ANDREW TO THE TOWN OF BELLEVUE.

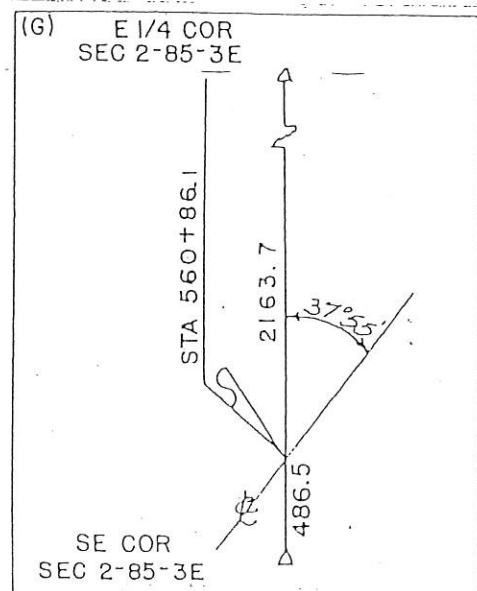
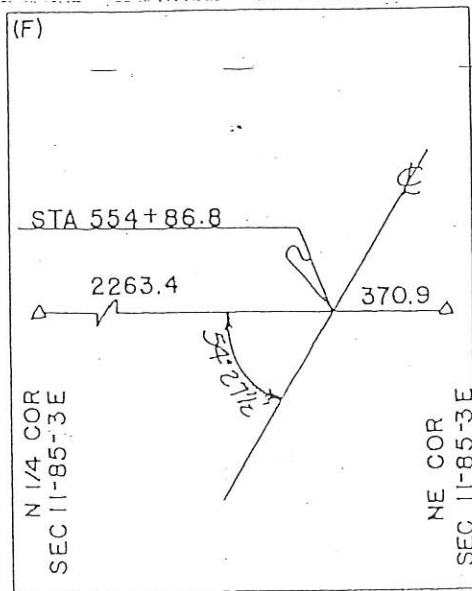
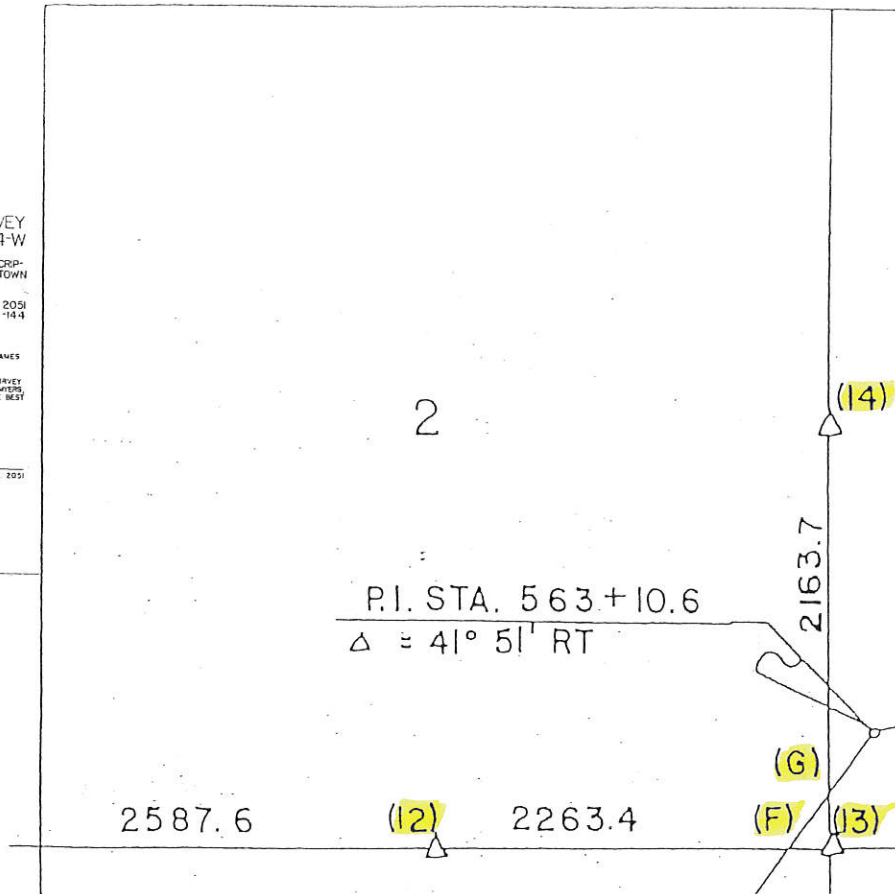
MADE BY JOHN D. FRANKLIN JACKSON COUNTY JULY THRU SEPT. 1958 R. L. S. NO. 2051 F 144

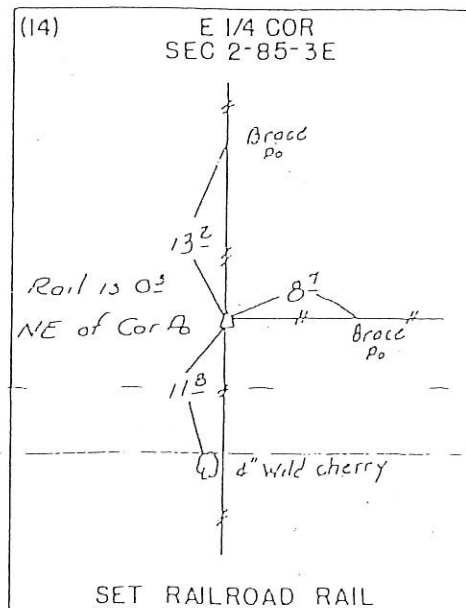
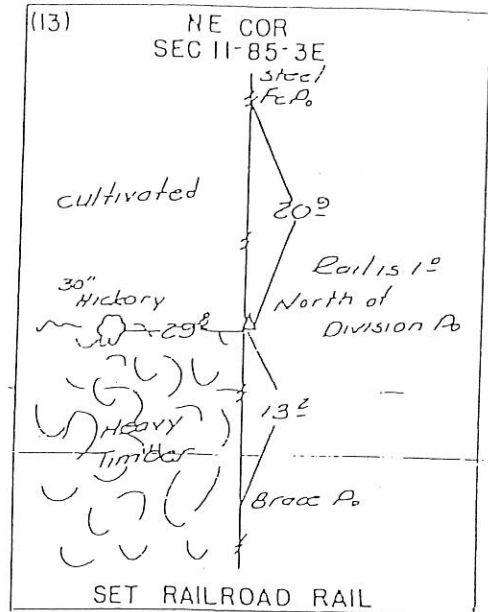
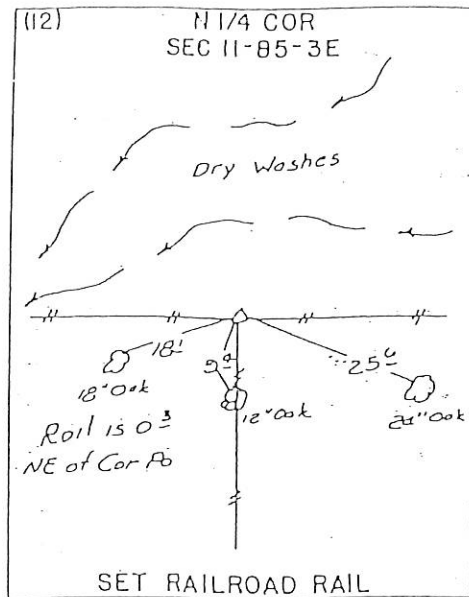
ALL DISTANCES WERE CAREFULLY MEASURED AND MAY NOT AGREE WITH ROAD SURVEY STATIONING. FOR COMPLETE INFORMATION ON THIS SURVEY, SEE FIELD NOTES ON FILE IN ANES OFFICE.

I HEREBY CERTIFY THAT THIS PLAT IS A TRUE REPRESENTATION OF A SURVEY MADE BY ME, ASSISTED BY JAMES D. FRANKLIN, D. F. POPELUS, R. H. JONES, W. M. JONES, L. R. MC GUIRE, AND R. P. VAN HORSECKE, ALL DULY SWORN, AND IS CORRECT TO THE BEST OF MY KNOWLEDGE.

SIGNED November 21, 1958

JOHN D. FRANKLIN R. L. S. NO. 2051





FILE NO 03-1008
PAGE 595

03 FEB 25 AM 10:26

PHYLLIS M. GERLACH
JACKSON COUNTY, IOWA

RECORDED # 6.00
Fee 6.00

Prepared by Wm. Burger Land Surveyors 510 3rd Street West Court, Worthington, Iowa Phone 319

UNITED STATES PUBLIC LAND SURVEY CORNER CERTIFICATE

Land Survey Monuments situated in Section 2, Township 85N, Range 3E, of the Fifth Principal Meridian, Jackson County, Iowa. Previously recorded in N/A in the Office of the County Recorder

Monument Description and Remarks: (No Corner Certificates found at the County Recorders Office)

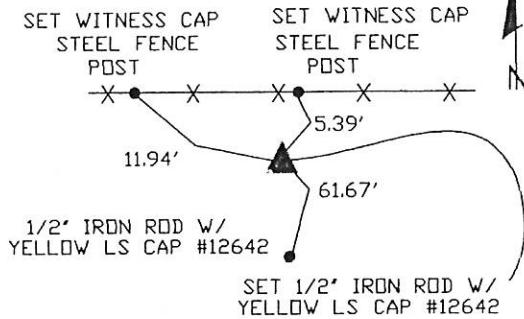
N1/4 CORNER - SET 1/2" IRON ROD W/YELLOW LS CAP #12642 - fd. stone at S1/4 corner of section 35 T86N R3E and set N1/4 corner of section 2 a recorded 26.4' east of said stone on line with said stone and se corner of said section 35

NW CORNER NE1/4 NW1/4 - SET 1/2" IRON ROD W/YELLOW LS CAP #12642 - set on line and midway between nw corner and n1/4 corner of said section 2 metal detected the area and nothing was found

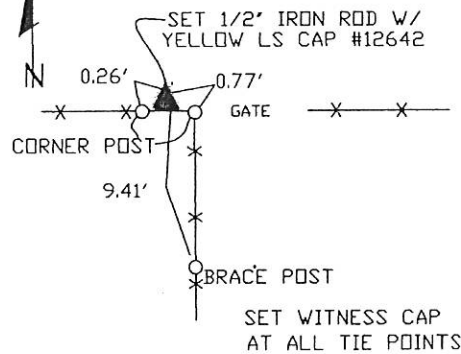
SE CORNER NE1/4 NW1/4 - SET 1/2" IRON ROD W/YELLOW LS CAP #12642 - set corner in line with long time fence and midway between ne corner and center of section

PLAN VIEW

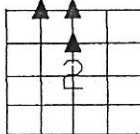
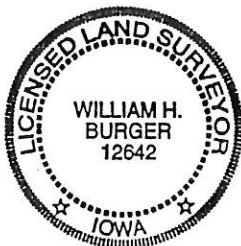
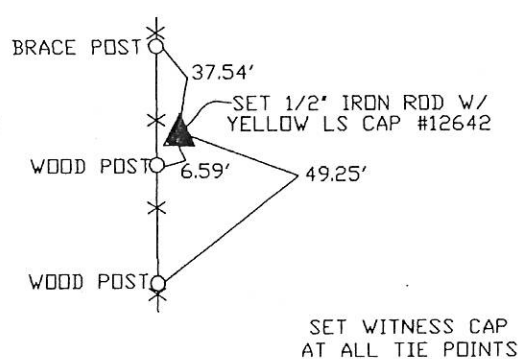
NW CORNER NE1/4 NW1/4



N1/4 CORNER



SE CORNER NE1/4 NW1/4



SEAL

SEC. 2 TWP. 85N RANGE 3E

I hereby certify that this land surveying document was prepared and related survey work was performed by me or under my direct personal supervision and that I am a duly licensed Land Surveyor under the laws of the State of Iowa.

William H. Burger 2/21/03
Date

License number 12642

My license renewal date is December 31, 2004

Pages or Sheets covered by this seal: Sheet 1 of 1

CORNERS TO BE INDEXED

N1/4 CORNER	2	85N	3E
NW CORNER NE1/4 NW1/4	2	85N	3E
SE NW CORNER NE1/4 NW1/4	2	85N	3E

FILE NO. 03-1344
PAGE 618

03 MAR 11 PM 2:30

PHYLLIS M. GERLACH
JACKSON COUNTY, IOWA
RECORDER

Prepared by Wm. Burger Land Surveyors

510 3rd Street West Court, Worthington, Iowa

Phone 515 855 2028

UNITED STATES PUBLIC LAND SURVEY CORNER CERTIFICATE

Land Survey Monuments situated in Section 2, Township 85N, Range 3E, of the Fifth Principal Meridian, Jackson County, Iowa. Previously recorded in BK.1, P.595 in the Office of the County Recorder

Monument Description and Remarks: (No Corner Certificates found at the County Recorders Office)

N1/4 CORNER - SET 1/2" IRON ROD W/YELLOW LS CAP #12642 - USED EXISTING

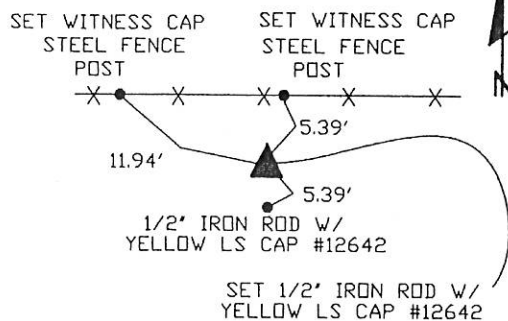
FENCELINE INFORMATION AND SET AT CORNER POST, METAL DETECTED AND PROBED AREA BUT NOTHING WAS FOUND

NW CORNER NE1/4 NW1/4 - SET 1/2" IRON ROD W/YELLOW LS CAP #12642 - SET HALFWAY BETWEEN THE N1/4 CORNER AND THE NW CORNER AND USED EXISTING FENCELINE INFORMATION

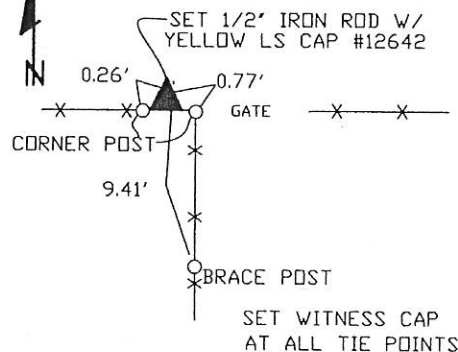
SE CORNER NE1/4 NW1/4 - SET 1/2" IRON ROD W/YELLOW LS CAP #12642 - USED EXISTING FENCELINE INFORMATION AND SET CORNER 1320' NORTH OF CENTER OF SECTION

PLAN VIEW

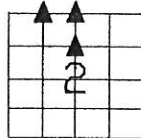
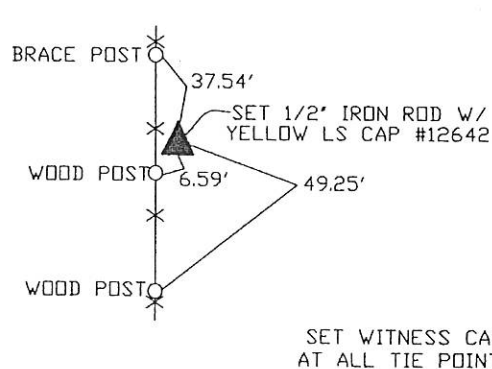
NW CORNER NE1/4 NW1/4



N1/4 CORNER



SE CORNER NE1/4 NW1/4



SEAL

SEC. 2 TWP. 85N RANGE 3E

I hereby certify that this land surveying document was prepared and related survey work was performed by me or under my direct personal supervision and that I am a duly licensed Land Surveyor under the laws of the State of Iowa.

William H. Burger 3/11/03
William H. Burger Date

License number 12642

My license renewal date is December 31, 2004

Pages or Sheets covered by this seal Sheet 1 of 1

CORNERS TO BE INDEXED

N1/4 CORNER	2	85N	3E
NW CORNER NE1/4 NW1/4	2	85N	3E
SE CORNER NE1/4 NW1/4	2	85N	3E

PREPARED BY: EGGER ENGINEERING AND LAND SURVEYING, P.C.
2395 TECH DRIVE SUITE 2 BETTENDORF, IOWA 52722 563-332-6330

03 SEP 11 AM 11:00

PHYLLIS M. GERLACH
JACKSON COUNTY, IOWA
RECORDER

Fee \$11.00

UNITED STATES PUBLIC LAND SURVEY CORNER CERTIFICATE
OF

Land Survey Monuments situated in Section 2, Township 85N, Range 2E, of the Fifth Principal Meridian, JACKSON County, Iowa. Previously recorded in BOOK 1, P. 92 in County Recorder's Office.

(book, page, document number, etc.)

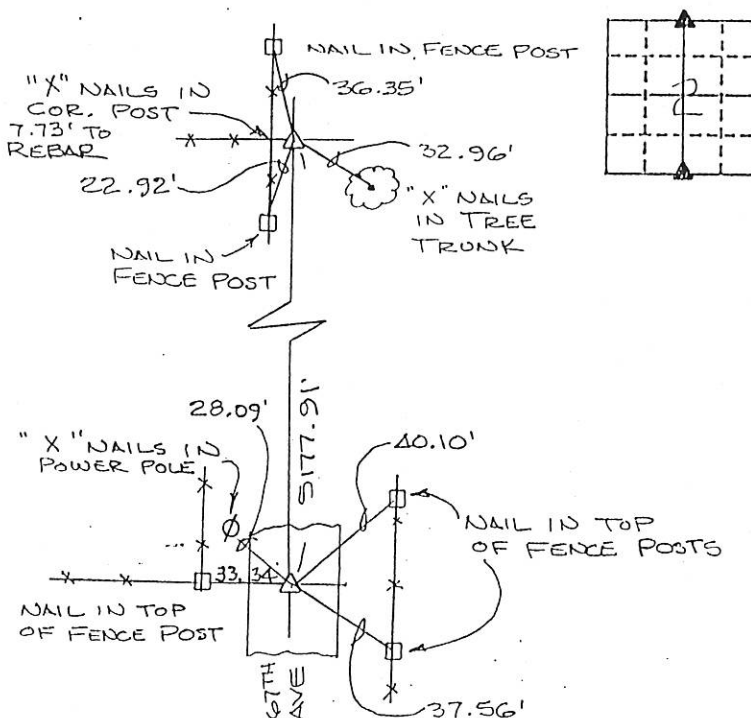
(Show reason for preparing this certificate, the evidence and detailed procedures used in establishing the corner positions and monumentation found or placed.)

Monument Description and Remarks: N 1/4 COR.; FOUND 1/2" REBAR W/ CAP 5339
FORMER TIE POINTS NOT FOUND, NEW TIES MEASURED

S 1/4 COR.; FOUND 1/2" REBAR W/ CAP 5339 NEW TIES MEASURED

PLAN - VIEW

(Show a minimum of three reference ties to durable physical object, relevant monuments and physical conditions that will enable recovery of the corner.)

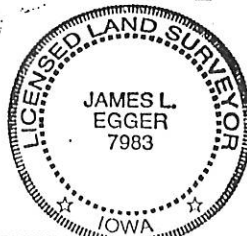


I hereby certify that the survey work was completed and this certificate was prepared by me or under my direct supervision and that I am a duly registered land surveyor under the laws of the state of Iowa.

Signature: James L. Egger
James L. Egger L.S.

Date: Sept 10, 2003 Reg. No. 7983

SEAL



Corners	List Corners to be Indexed		
	Section	Twp	Range
N 1/4 Corner	2	85	2
S 1/4 Corner	2	85	2



Document 12-861

Book 3 Page 34 Type 15 001 Pages 1

Date 2/29/2012 Time 10:53 AM

Rec Amt \$7.00

ARLENE SCHAUF, RECORDER/REGISTRAR
JACKSON COUNTY IOWA

Prepared by: SCHNEIDER Land Surveying and Planning, Inc. P.O. Box 128 Farley, Iowa 52046 563-744-3631

UNITED STATES PUBLIC LAND SURVEY CORNER CERTIFICATE OF

Land Survey Monuments situated in Section 2, Township 85 North, Range 3 East of the Fifth Principal Meridian, Jackson County, Iowa.
Previously recorded (NONE OF RECORD)

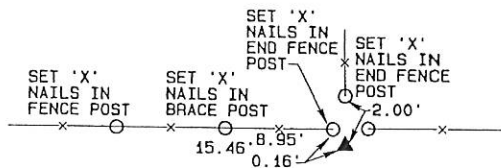
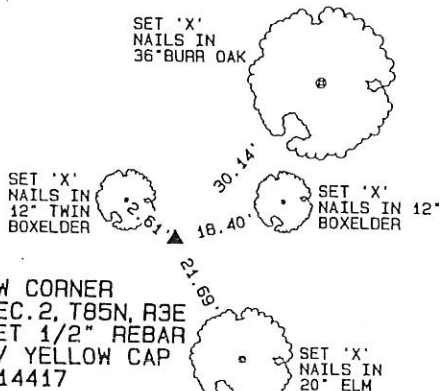
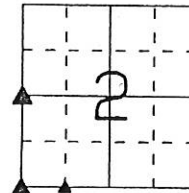
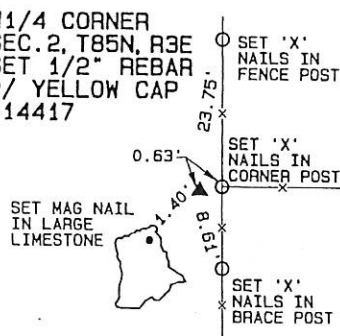
(Show reason for preparing this certificate, the evidence and detailed procedures used in establishing the corner positions and monumentation found or placed.)

Monument Description and Remarks: THE W1/4 CORNER OF SECTION 2, T85N, R3E WAS ESTABLISHED AT THE INTERSECTION OF OCCUPATION EVIDENCE NORTH, SOUTH, AND EAST OF THE CORNER. THE SOUTHWEST CORNER OF SECTION 2, T85N, R3E WAS ESTABLISHED IN LINE WITH OCCUPATION EVIDENCE LOCATED NORTH AND EAST AND BY DOUBLING THE DISTANCE FROM THE S1/4 CORNER OF SECTION 3 THROUGH THE 1/16th CORNER A QUARTER MILE WEST OF THE SOUTHWEST CORNER OF SECTION 2. THE SOUTHEAST CORNER OF THE SW1/4 OF THE SW1/4 OF SECTION 2, T85N, R3E WAS ESTABLISHED AT THE INTERSECTION OF OCCUPATION EVIDENCE EAST, NORTH, AND WEST OF THE CORNER.

PLAN - VIEW

(Show a minimum of three reference ties to durable physical objects, relevant monuments and physical conditions that will enable recovery of the corner.)

W1/4 CORNER
SEC. 2, T85N, R3E
SET 1/2" REBAR
W/ YELLOW CAP
#14417



SE CORNER
SW1/4, SW1/4,
SEC. 2, T85N, R3E
SET 1/2" REBAR W/
YELLOW CAP #14417

I hereby certify that this land surveying document was prepared and the related survey work was performed by me or under my direct personal supervision and that I am a duly licensed Land Surveyor under the laws of the State of Iowa.

David P. Schneider P.L.S. #14417

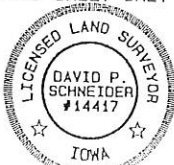
Date: 2/27/2012

My license renewal date is December 31, 2013.

Pages or sheets covered by this seal: THIS SHEET ONLY

SCHNEIDER
Land Surveying & Planning, Inc.

P.O. Box 128 Farley, Iowa 52046
Ph. #563-744-3631 Fax #563-744-3629



List Corners to be Indexed

Corners	Section	Twp	Range
W1/4 CORNER	2	85N	3E
SW CORNER	2	85N	3E
SE CORNER SW1/4, SW1/4,	2	85N	3E



Document 14-4246

Book 3 Page 154 Type 15 001 Pages 1
Date 12/12/2014 Time 1:58 PM
Rec Amt \$7.00

ARLENE SCHAUF, RECORDER/REGISTRAR
JACKSON COUNTY IOWA

PREPARED BY: MICHAEL J. WEBER, WEBER SURVEYING, LLC, 26789 46TH AVE, BERNARD, IA 52032 (563) 879-4173

UNITED STATES PUBLIC LAND SURVEY CORNER CERTIFICATE OF

LAND SURVEY MONUMENTS SITUATED IN SECTION 2, TOWNSHIP 85 NORTH, RANGE 3 EAST
OF THE FIFTH PRINCIPAL MERIDIAN, JACKSON COUNTY, IOWA.
PREVIOUSLY RECORDED NONE UNLESS NOTED BELOW

(Show reason for preparing this certificate, the evidence and detailed procedures used in establishing the corner positions and monumentation found or placed.)

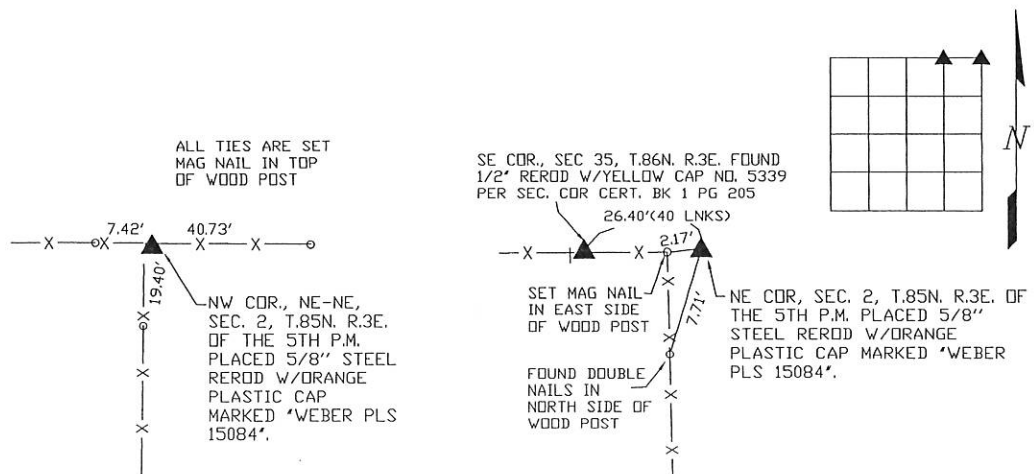
Monument Description and Remarks (book, page, document number, etc.)

-NE COR. SEC. 2, T.85N. R.3E. OF THE 5TH P.M. PLACED 5/8" STEEL REROD W/ORANGE PLASTIC CAP MARKED 'WEBER PLS 15084'. 26.4' (40 LNKS) EAST OF THE SE COR. SEC. 35, T.86N. R.3E.

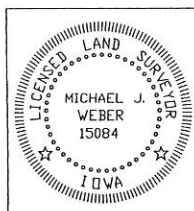
-NW COR. NE-NE, SEC. 2, T.85N. R.3E. OF THE 5TH P.M. PLACED 5/8" STEEL REROD W/ORANGE PLASTIC CAP MARKED 'WEBER PLS 15084'. ESTABLISHED MIDWAY BETWEEN THE N 1/4 COR. AND NE COR. CORNER OF SAID SEC. 2 AND INLINE WITH OCCUPATION FENCELINE RUNING EAST AND WEST.

(Show a minimum of three reference ties to durable physical objects, relevant monuments and physical conditions that will enable recovery of the corner.)

PLAN - VIEW



DWG. NO. 10\SWWAGER-PARCEL-H



I HEREBY CERTIFY THAT THIS LAND SURVEYING DOCUMENT WAS
PREPARED AND THE RELATED SURVEY WORK WAS PERFORMED BY ME OR
UNDER MY DIRECT PERSONAL SUPERVISION AND THAT I AM A DULY
LICENSED LAND SURVEYOR UNDER THE LAWS OF THE STATE OF IOWA.

Michael J. Weber November 12, 2014
MICHAEL J. WEBER (DATE)
LICENSE NUMBER 15084
MY LICENSE RENEWAL DATE IS DECEMBER 31, 2015
SHEETS COVERED BY THIS SEAL: THIS SHEET

Corner	Sec	Twp	Range
NE COR.	2	85N	3E
NW COR., NE-NE	2	85N	3E