

Sec. 27

LAND T-84&85-N CORNER SURVEY R-3-E

MADE FOR IOWA STATE HIGHWAY COMMISSION FOR THE PURPOSE OF R.O.W. DESCRIPTIONS ON RELOCATION OF IOWA PRIMARY ROAD NO 62 FROM MAQUOKETA NORTH TO TOWN OF ANDREW.

MADE BY JOHN D. FRANKLIN JACKSON COUNTY R.L.S. NO. 2051 F-991

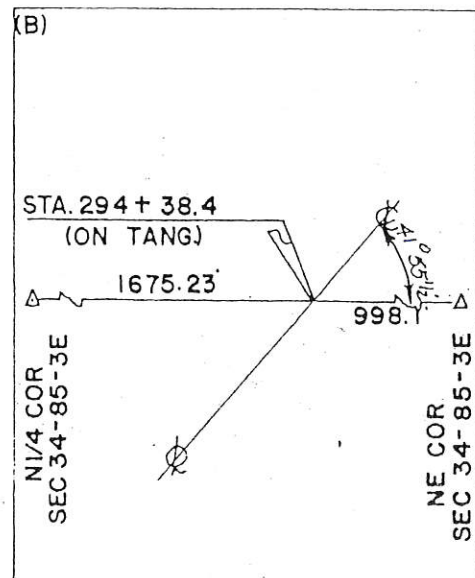
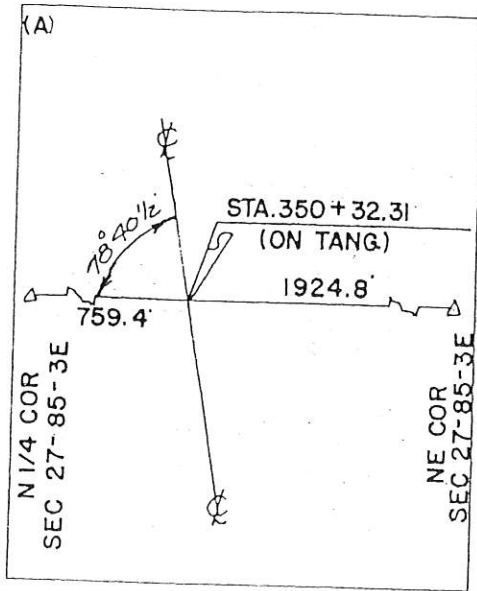
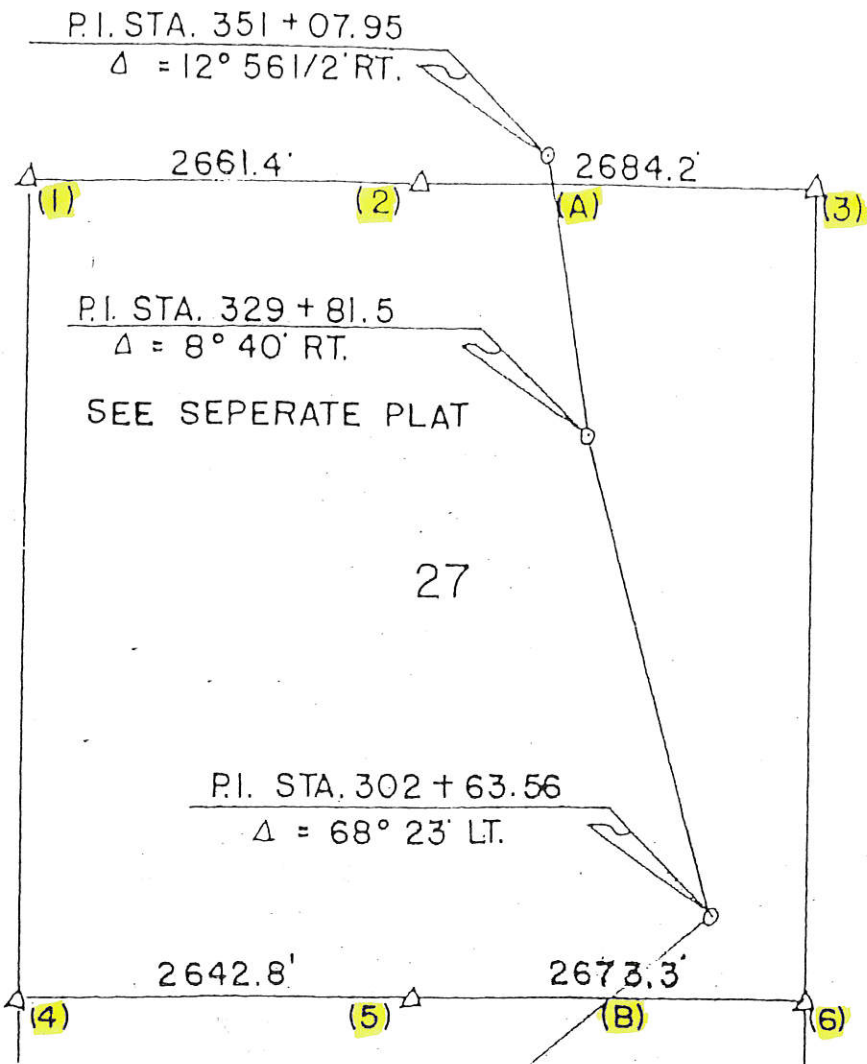
JUNE-JULY 1958

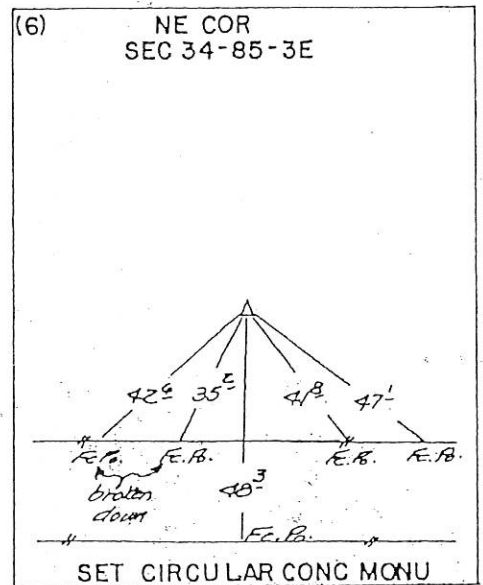
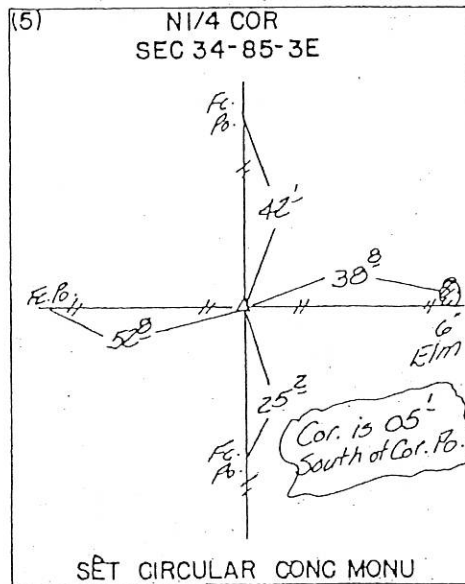
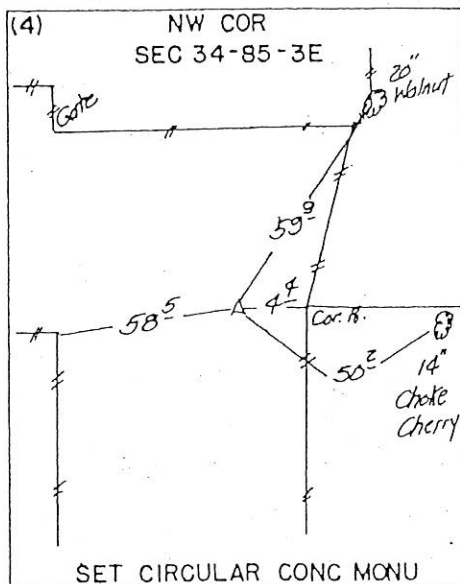
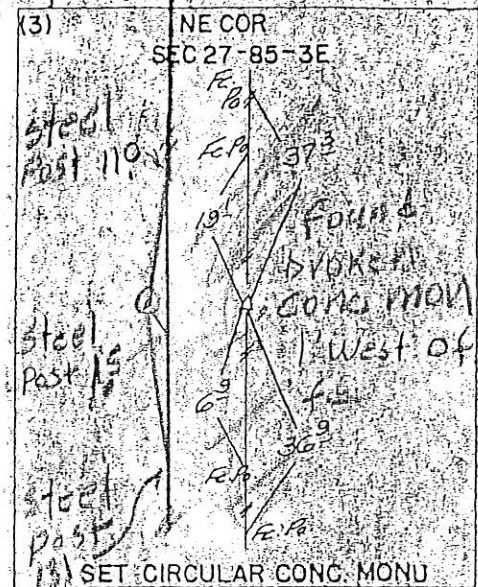
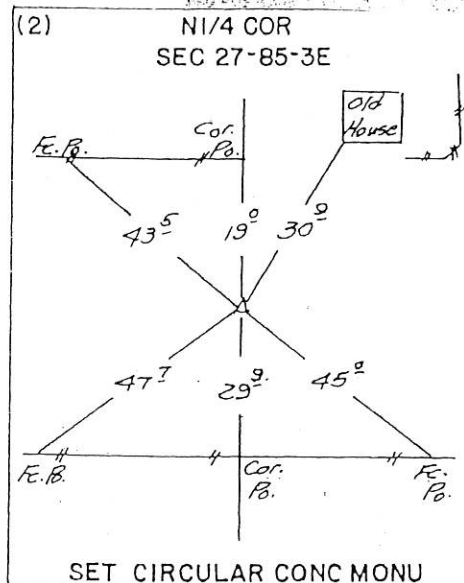
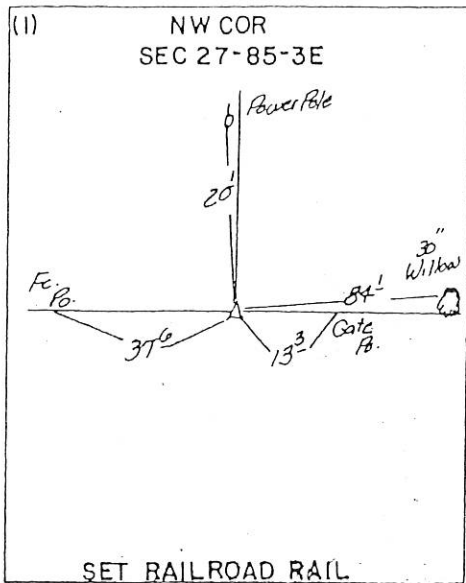
ALL DISTANCES WERE CAREFULLY MEASURED AND MAY NOT AGREE WITH ROAD SURVEY STATIONING. FOR COMPLETE INFORMATION ON THIS SURVEY, SEE FIELD NOTES ON FILE IN NAMES OFFICE.

I HEREBY CERTIFY THAT THIS PLAT IS A TRUE REPRESENTATION OF A SURVEY MADE BY ME, ASSISTED BY JAMES D. FRANKLIN, R.F. POPELKA, R.H. JANS, W.M. MYERS, L.R. MC GUIRE AND R. P. VAN HORBECK, ALL DULY SWORN, AND IS CORRECT TO THE BEST OF MY KNOWLEDGE.

SIGNED: November 21, 1958

JOHN D. FRANKLIN R.L.S. NO. 2051





# UNITED STATES PUBLIC LAND SURVEY CORNER CERTIFICATE OF

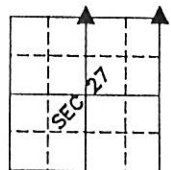
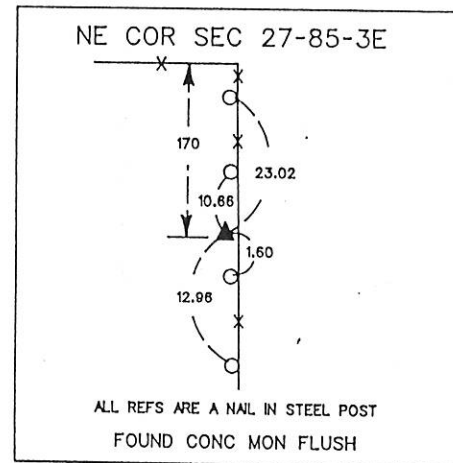
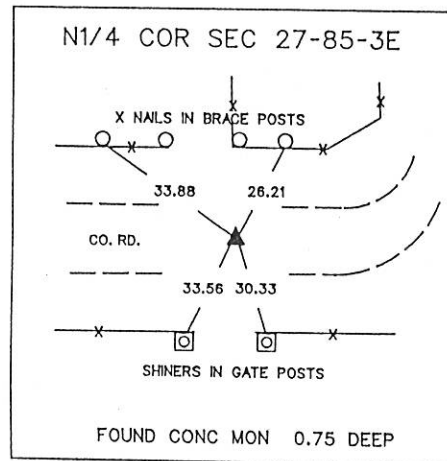
LAND SURVEY MONUMENTS SITUATED IN SECTION 27, TOWNSHIP 85 NORTH, RANGE 3 EAST, OF THE 5TH PRINCIPAL MERIDIAN JACKSON COUNTY IOWA.  
PREVIOUSLY RECORDED IN DOES NOT APPLY IN COUNTY RECORDER'S OFFICE.  
(book, page, document number, etc.)

(Show reason for preparing this certificate, the evidence and detailed procedures used in establishing the corner positions and monumentation found or placed.)

MONUMENT DESCRIPTION AND REMARKS: RE-REFERENCED CORNERS FOR  
EXCESS LAND SALE AND ABANDONMENT

## PLAN - VIEW

(Show a minimum of three reference ties to durable physical objects, relevant monuments and physical conditions that will enable recovery of the corner.)



I hereby certify that the survey work was completed and this certificate was prepared by me or under my direct personal supervision and that I am a duly registered land surveyor under the laws of the state of Iowa.

Signature: Dennis R. Kunze

DENNIS R. KUNZE

Date: 11-15-1991 Reg. No. 10679



### LAND CORNERS TO BE RECORDED

Corners	Section	Twp.	Range
N <sup>1</sup> / <sub>4</sub>	27	T-85-N	R-3-E
N.E.	27	T-85-N	R-3-E

1216  
FILE NO. 1216  
BOOK 1 PAGE 64  
1991 NOV 15 AM 8:47  
SHIRLEY RITENOUR  
JACKSON COUNTY, IOWA  
RECORDER #509

BOOK 1 PAGE 64



Document 05-208

Book 2 Page 320 Type 06 23 Pages 1  
Date 1/17/2005 Time 8:30 AM  
Rec Amt \$7.00

PHYLLIS M. GERLACH, RECORDER  
JACKSON COUNTY IOWA

Prepared by Wm. Burger Land Surveyors

510 3rd Street West Court, Worthington, Iowa 52078

Phone 563 - 855 2028

### UNITED STATES PUBLIC LAND SURVEY CORNER CERTIFICATE

Land Survey Monuments situated in Section 27, Township 85N, Range 3E, of the Fifth Principal Meridian, Jackson County, Iowa. Previously recorded in N/A in the Office of the County Recorder

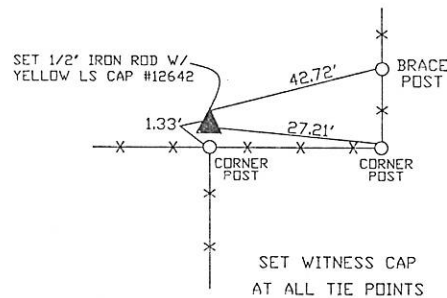
Monument Description and Remarks: (No Corner Certificates found at the County Recorders Office)

E1/4 CORNER - SET 1/2" IRON ROD WITH LS CAP # 12642 - USED FENCELINE EVIDENCE AND SET AT THE CORNER POST

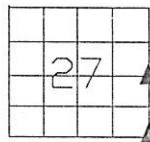
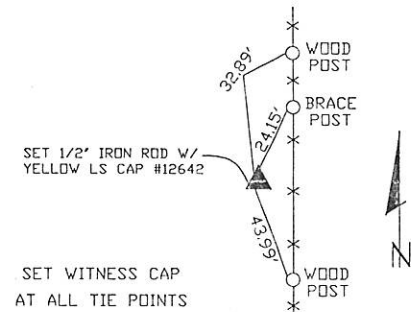
SE CORNER - SET 1/2" IRON ROD WITH LS CAP # 12642 - USED ROAD RECORD INFORMATION LOCATED AT THE I.D.D.T. OFFICE IN CEDAR RAPIDS, IOWA

#### PLAN VIEW

##### E1/4 CORNER



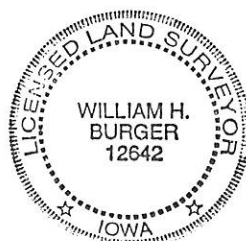
##### SE CORNER



SEC. 27 TWP. 85N RANGE 3E

#### CORNERS TO BE INDEXED

E1/4 CORNER	27	85N	3E
SE CORNER	27	85N	3E



I hereby certify that this land surveying document was prepared and related survey work was performed by me or under my direct personal supervision and that I am a duly licensed Land Surveyor under the laws of the State of Iowa.

*William H. Burger* 1/3/05  
William H. Burger Date

License number 12642

My license renewal date is December 31, 2006

Pages or Sheets covered by this seal: Sheet 1 of 1



Document 11-1439

Book 2 Page 765 Type 15 001 Pages 1  
Date 4/15/2011 Time 9:52 AM  
Rec Amt \$9.00

ARLENE SCHAUF, RECORDER/REGISTRAR  
JACKSON COUNTY IOWA

PREPARED BY: MICHAEL J. WEBER, WEBER SURVEYING, LLC, 26789 46TH AVE, BERNARD, IA 52032 (563) 879-4173

## UNITED STATES PUBLIC LAND SURVEY CORNER CERTIFICATE OF

LAND SURVEY MONUMENTS SITUATED IN SECTION 27, TOWNSHIP 85 NORTH, RANGE 3 EAST  
OF THE FIFTH PRINCIPAL MERIDIAN, JACKSON COUNTY, IOWA.  
PREVIOUSLY RECORDED NONE UNLESS NOTED BELOW

(book, page, document number, etc.)

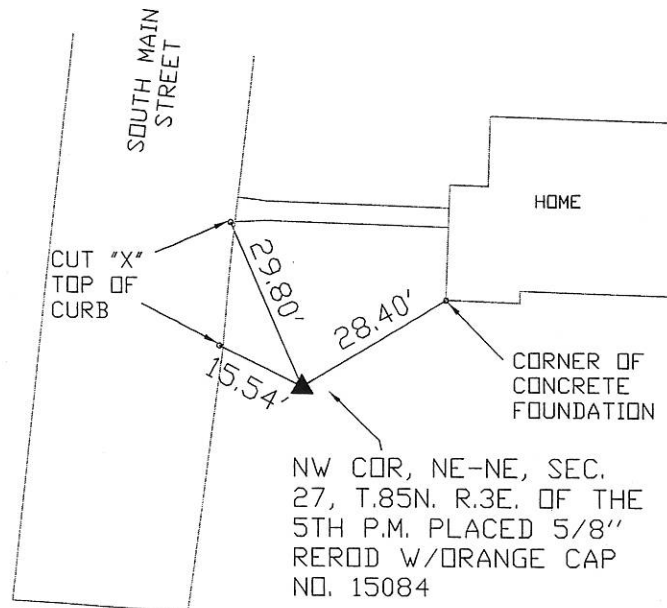
(Show reason for preparing this certificate, the evidence and detailed procedures used in establishing the corner positions and monumentation found or placed.)

Monument Description and Remarks:

-NW COR, NE-NE, SEC. 27, T.85N. R.3E. OF THE 5TH P.M. PLACED 5/8" REROD  
W/ORANGE CAP NO. 15084. ESTABLISHED CORNER MIDWAY AND ONLINE BETWEEN THE  
NORTH 1/4 CORNER AND THE NE CORNER OF SECTION 27

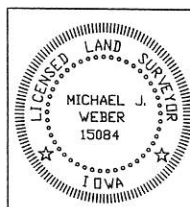
(Show a minimum of three reference ties to durable physical objects, relevant monuments and physical conditions that will enable recovery of the corner.)

### PLAN - VIEW



DRAWING NOT TO SCALE

DWG. NO. 2011\TILL-D



I HEREBY CERTIFY THAT THIS LAND SURVEYING DOCUMENT WAS  
PREPARED AND THE RELATED SURVEY WORK WAS PERFORMED BY ME OR  
UNDER MY DIRECT PERSONAL SUPERVISION AND THAT I AM A DULY  
LICENSED LAND SURVEYOR UNDER THE LAWS OF THE STATE OF IOWA.

Michael J. Weber April 11, 2011  
(DATE)  
MICHAEL J. WEBER  
LICENSE NUMBER 15084  
MY LICENSE RENEWAL DATE IS DECEMBER 31, 2011

SHEETS COVERED BY THIS SEAL: THIS SHEET

List Corners to be Indexed  
Corner Sec Twp Range

NW COR, NE-NE 27 85N 3E