



Document 06-2903

Book 2 Page 462 Type 06 023 Pages 1

Date 7/25/2006 Time 2:08 PM

Rec Amt \$7.00

ARLENE SCHAUF, RECORDER
JACKSON COUNTY IOWA

PREPARED BY: MICHAEL J. WEBER, WEBER SURVEYING, LLC, 26789 46TH AVE, BERNARD, IA 52032 (563) 879-4173

UNITED STATES PUBLIC LAND SURVEY CORNER CERTIFICATE OF

LAND SURVEY MONUMENTS SITUATED IN SECTION 24, TOWNSHIP 85 NORTH, RANGE 3 EAST
OF THE FIFTH PRINCIPAL MERIDIAN, JACKSON COUNTY, IOWA.
PREVIOUSLY RECORDED NONE UNLESS OTHERWISE NOTED

(book, page, document number, etc.)

(Show reason for preparing this certificate, the evidence and detailed procedures used in establishing the corner positions and nonumentation found or placed.)

Monument Description and Remarks:

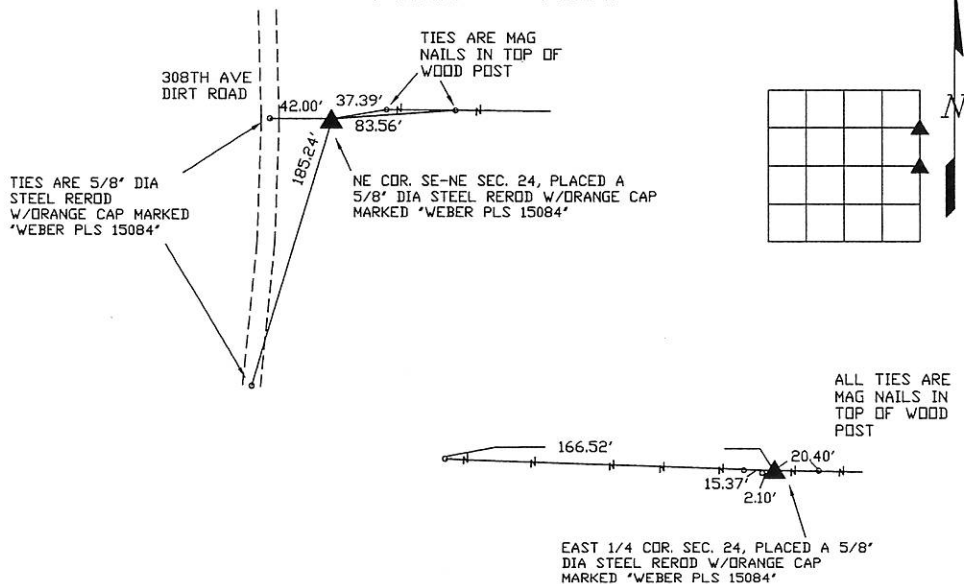
THE FOLLOWING CORNERS ARE SHOWN ON THE PLAT OF SURVEY OF PARCEL B IN SECTION 24, T.85N.
R.3E. OF THE 5TH PM IN JACKSON COUNTY, IOWA

-EAST 1/4 COR. SEC. 24, PLACED A 5/8" DIA STEEL REROD W/ORANGE CAP MARKED 'WEBER PLS 15084' ESTABLISHED CORNER USING ROAD PLANS OF COUNTY ROAD E17.

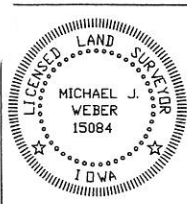
-NE COR. SE-NE SEC. 24, PLACED A 5/8" DIA STEEL REROD W/ORANGE CAP MARKED 'WEBER PLS 15084' ESTABLISHED USING OCCUPATION FENCELINE EVIDENCE

(Show a minimum of three reference ties to durable physical objects, relevant monuments and physical conditions that will enable recovery of the corner.)

PLAN - VIEW



DWG. NO. McMURRAY



I HEREBY CERTIFY THAT THIS LAND SURVEYING DOCUMENT WAS
PREPARED AND THE RELATED SURVEY WORK WAS PERFORMED BY ME OR
UNDER MY DIRECT PERSONAL SUPERVISION AND THAT I AM A DULY
LICENSED LAND SURVEYOR UNDER THE LAWS OF THE STATE OF IOWA.

MICHAEL J. WEBER (DATE) July 24, 2006
LICENSE NUMBER 15084
MY LICENSE RENEWAL DATE IS DECEMBER 31, 2007

SHEETS COVERED BY THIS SEAL: 1

Corner	Sec	Twp	Range
EAST 1/4	24	85N	3E
NE Cor. SE-NE	24	85N	3E



Document 08-138

Book 2 Page 598 Type 15 001 Pages 1

Date 1/11/2008 Time 8:27 AM

Rec Amt \$7.00

ARLENE SCHAUF, RECORDER/REGISTRAR
JACKSON COUNTY IOWA

PREPARED BY: MICHAEL J. WEBER, WEBER SURVEYING, LLC, 26789 46TH AVE, BERNARD, IA 52032 (563) 879-4173

UNITED STATES PUBLIC LAND SURVEY CORNER CERTIFICATE
OFLAND SURVEY MONUMENTS SITUATED IN SECTION 24, TOWNSHIP 85 NORTH, RANGE 3 EAST
OF THE FIFTH PRINCIPAL MERIDIAN, JACKSON COUNTY, IOWA.
PREVIOUSLY RECORDED NONE UNLESS OTHERWISE NOTED

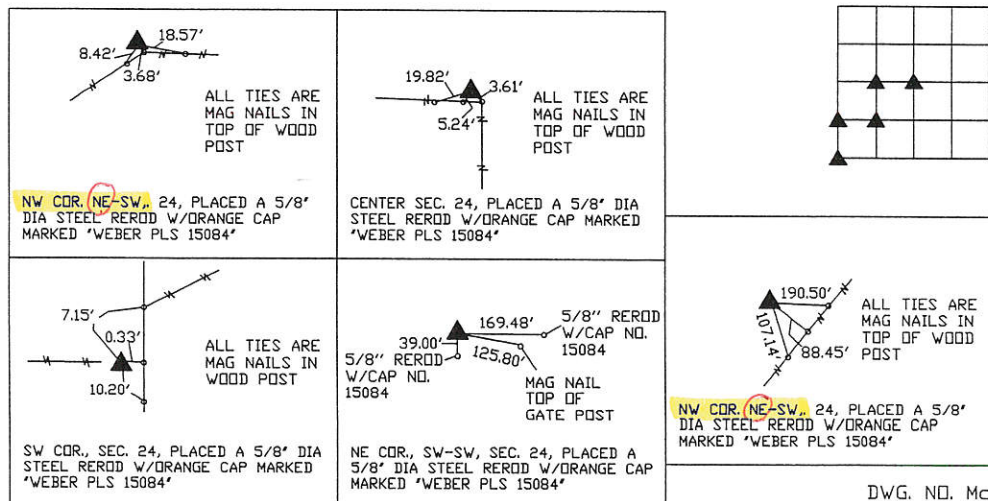
(book, page, document number, etc.)

(Show reason for preparing this certificate, the evidence and detailed procedures used in establishing the corner positions and monumentation found or placed.)

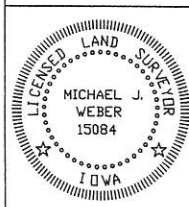
Monument Description and Remarks:

THE FOLLOWING CORNERS ARE SHOWN ON THE PLAT OF SURVEY OF PARCEL C IN SECTION 24, T.85N.
R.3E. OF THE 5TH PM IN JACKSON COUNTY, IOWA-CENTER OF SEC. 24, PLACED A 5/8" DIA STEEL REROD W/ORANGE CAP MARKED "WEBER PLS 15084"
ESTABLISHED CORNER USING ROAD PLANS OF COUNTY ROAD E17 AND THE OCCUPATION FENCELINES
RUNNING WEST & SOUTH-NW COR. NE-SW SEC. 24, PLACED A 5/8" DIA STEEL REROD W/ORANGE CAP MARKED "WEBER PLS
15084" ESTABLISHED CORNER USING ROAD PLANS OF COUNTY ROAD E17-NE COR. SW-SW SEC. 24, PLACED A 5/8" DIA STEEL REROD W/ORANGE CAP MARKED "WEBER PLS
15084" ESTABLISHED CORNER USING ROAD PLANS OF COUNTY ROAD E17-NW COR. SW-SW SEC. 24, PLACED A 5/8" DIA STEEL REROD W/ORANGE CAP MARKED "WEBER PLS
15084" ESTABLISHED CORNER MIDWAY BETWEEN THE W 1/4 COR AND THE SW COR., AND USING ROAD
PLANS OF COUNTY ROAD E17-SW COR. SEC. 24, PLACED A 5/8" DIA STEEL REROD W/ORANGE CAP MARKED "WEBER PLS 15084"
ESTABLISHED CORNER USING ORIGINAL NOTES DIMENSION FROM BRUSH CREEK AND OCCUPATION
FENCELINE RUNNING NORTH, SOUTH AND WEST(Show a minimum of three reference ties to durable physical objects, relevant monuments and physical conditions that
will enable recovery of the corner.)

PLAN - VIEW



DWG. NO. McMURRAY-2

I HEREBY CERTIFY THAT THIS LAND SURVEYING DOCUMENT WAS
PREPARED AND THE RELATED SURVEY WORK WAS PERFORMED BY ME OR
UNDER MY DIRECT PERSONAL SUPERVISION AND THAT I AM A DULY
LICENSED LAND SURVEYOR UNDER THE LAWS OF THE STATE OF IOWA.Michael J. Weber January 8, 2008
(DATE)MICHAEL J. WEBER
LICENSE NUMBER 15084

MY LICENSE RENEWAL DATE IS DECEMBER 31, 2009

SHEETS COVERED BY THIS SEAL: SHEET No. 1

Corner	Sec	Twp	Range
CENTER	24	85N	3E
NW Cor. NE-SW	24	85N	3E
NE Cor. SW-SW	24	85N	3E
NW Cor. SW-SW	24	85N	3E
SW Cor.	24	85N	3E

Book 2 Page 598

Note:
one of these
two is correct
the other should be
written as:
NW cor. SW-SW



Document 10-2526

Book 2 Page 722 Type 15 001 Pages 1
Date 6/28/2010 Time 8:43 AM
Rec Amt \$9.00

ARLENE SCHAUF, RECORDER/REGISTRAR
JACKSON COUNTY IOWA

PREPARED BY: MICHAEL J. WEBER, WEBER SURVEYING, LLC, 26789 46TH AVE, BERNARD, IA 52032 (563) 879-4173

UNITED STATES PUBLIC LAND SURVEY CORNER CERTIFICATE OF

LAND SURVEY MONUMENTS SITUATED IN SECTION 24, TOWNSHIP 85 NORTH, RANGE 3 EAST
OF THE FIFTH PRINCIPAL MERIDIAN, JACKSON COUNTY, IOWA.
PREVIOUSLY RECORDED NONE UNLESS OTHERWISE NOTED
(book, page, document number, etc.)

(Show reason for preparing this certificate, the evidence and detailed procedures used in establishing the corner positions and monumentation found or placed.)

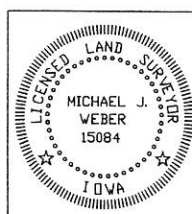
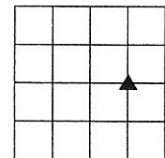
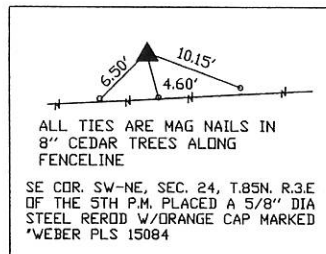
Monument Description and Remarks:

THE FOLLOWING CORNERS ARE SHOWN ON THE PLAT OF SURVEY OF PARCEL D IN SECTION 24, T.85N. R.3E. OF THE 5TH PM IN JACKSON COUNTY, IOWA

-SE COR. SW-NE SEC. 24, PLACED A 5/8" DIA STEEL REROD W/ORANGE CAP MARKED "WEBER PLS 15084" ESTABLISHED CORNER MIDWAY BETWEEN THE E 1/4 COR AND THE CENTER OF SEC 24 AND ONLINE WITH THE SOUTH LINE OF PARCEL B OF SEC. 24 AS SHOWN IN PLAT BK 1-Q PG 96

(Show a minimum of three reference ties to durable physical objects, relevant monuments and physical conditions that will enable recovery of the corner.)

PLAN - VIEW



I HEREBY CERTIFY THAT THIS LAND SURVEYING DOCUMENT WAS
PREPARED AND THE RELATED SURVEY WORK WAS PERFORMED BY ME OR
UNDER MY DIRECT PERSONAL SUPERVISION AND THAT I AM A DULY
LICENSED LAND SURVEYOR UNDER THE LAWS OF THE STATE OF IOWA.
Michael J. Weber June 3, 2010
MICHAEL J. WEBER (DATE)
LICENSE NUMBER 15084
MY LICENSE RENEWAL DATE IS DECEMBER 31, 2011
SHEETS COVERED BY THIS SEAL: _____

DWG. NO. McMURRAY-3

List Corners to be Indexed
Corner Sec Twp Range

SE Cor. SW-NE 24 85N 3E

Book 2 Page 722



Document 12-4532

Book 3 Page 68 Type 15 001 Pages 1

Date 10/25/2012 Time 2:26 PM

Rec Amt \$7.00

ARLENE SCHAUF, RECORDER/REGISTRAR
JACKSON COUNTY IOWA

PREPARED BY: MICHAEL J. WEBER, WEBER SURVEYING, LLC, 26789 46TH AVE, BERNARD, IA 52032 (563) 879-4173

UNITED STATES PUBLIC LAND SURVEY CORNER CERTIFICATE OF

LAND SURVEY MONUMENTS SITUATED IN SECTION 24, TOWNSHIP 85 NORTH, RANGE 3 EAST
OF THE FIFTH PRINCIPAL MERIDIAN, JACKSON COUNTY, IOWA.
PREVIOUSLY RECORDED NONE UNLESS OTHERWISE NOTED

(book, page, document number, etc.)

(Show reason for preparing this certificate, the evidence and detailed procedures used in establishing the corner positions and monumentation found or placed.)

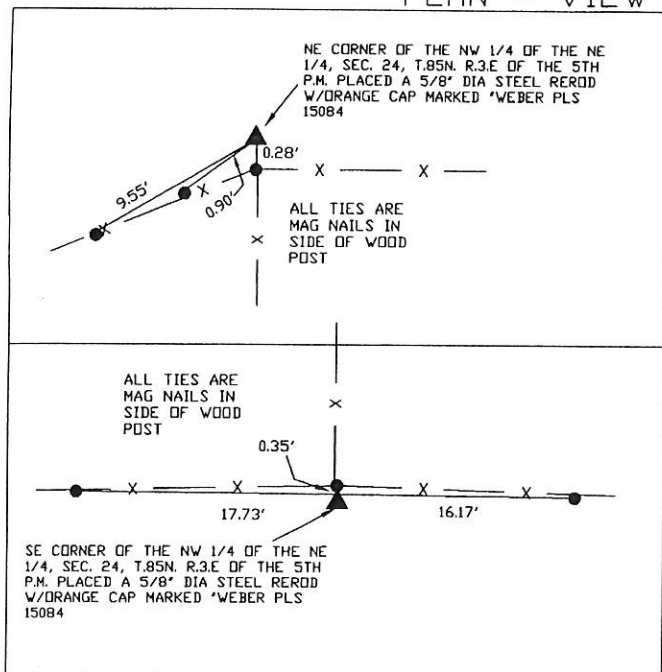
Monument Description and Remarks:

-NE CORNER OF THE NW 1/4 OF THE NE 1/4, SEC. 24, T.85N. R.3E OF THE 5TH P.M. PLACED A 5/8" DIA STEEL REROD W/ORANGE CAP MARKED "WEBER PLS 15084. ESTABLISHED USING OCCUPATION FENCELINE EVIDENCE

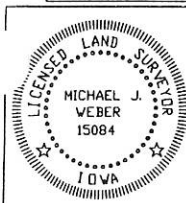
-SE CORNER OF THE NW 1/4 OF THE NE 1/4, SEC. 24, T.85N. R.3E OF THE 5TH P.M. PLACED A 5/8" DIA STEEL REROD W/ORANGE CAP MARKED "WEBER PLS 15084. ESTABLISHED USING OCCUPATION FENCELINE EVIDENCE

(Show a minimum of three reference ties to durable physical objects, relevant monuments and physical conditions that will enable recovery of the corner.)

PLAN - VIEW



DWG. NO. 2006\McMURRAY\PARCEL-F



I HEREBY CERTIFY THAT THIS LAND SURVEYING DOCUMENT WAS PREPARED AND THE RELATED SURVEY WORK WAS PERFORMED BY ME OR UNDER MY DIRECT PERSONAL SUPERVISION AND THAT I AM A DULY LICENSED LAND SURVEYOR UNDER THE LAWS OF THE STATE OF IOWA.

Michael J. Weber October 18, 2012
MICHAEL J. WEBER (DATE)

LICENSE NUMBER 15084

MY LICENSE RENEWAL DATE IS DECEMBER 31, 2013

SHEETS COVERED BY THIS SEAL: *This sheet*

List Corners to be Indexed
Corner Sec Twp Range

NE COR, NW-NE 24 85N 3E
SE Cor. NW-NE 24 85N 3E