

FILE NO. 02-1733
BOOK L PAGE 565

02 APR 16 AM 10:25

PHYLLIS M. GERLACH
JACKSON COUNTY, IOWA
RECORDER / 22 /

Prepared by: SCHNEIDER Land Surveying and Planning P.O. Box 105 Peosta, Iowa 52068 563-556-9055

UNITED STATES PUBLIC LAND SURVEY CORNER CERTIFICATE OF

Land Survey Monuments situated in Section 23, Township 85 North, Range 3 East
of the Fifth Principal Meridian, Jackson County, Iowa.
Previously recorded NONE OF RECORD

NONE OF RECORD

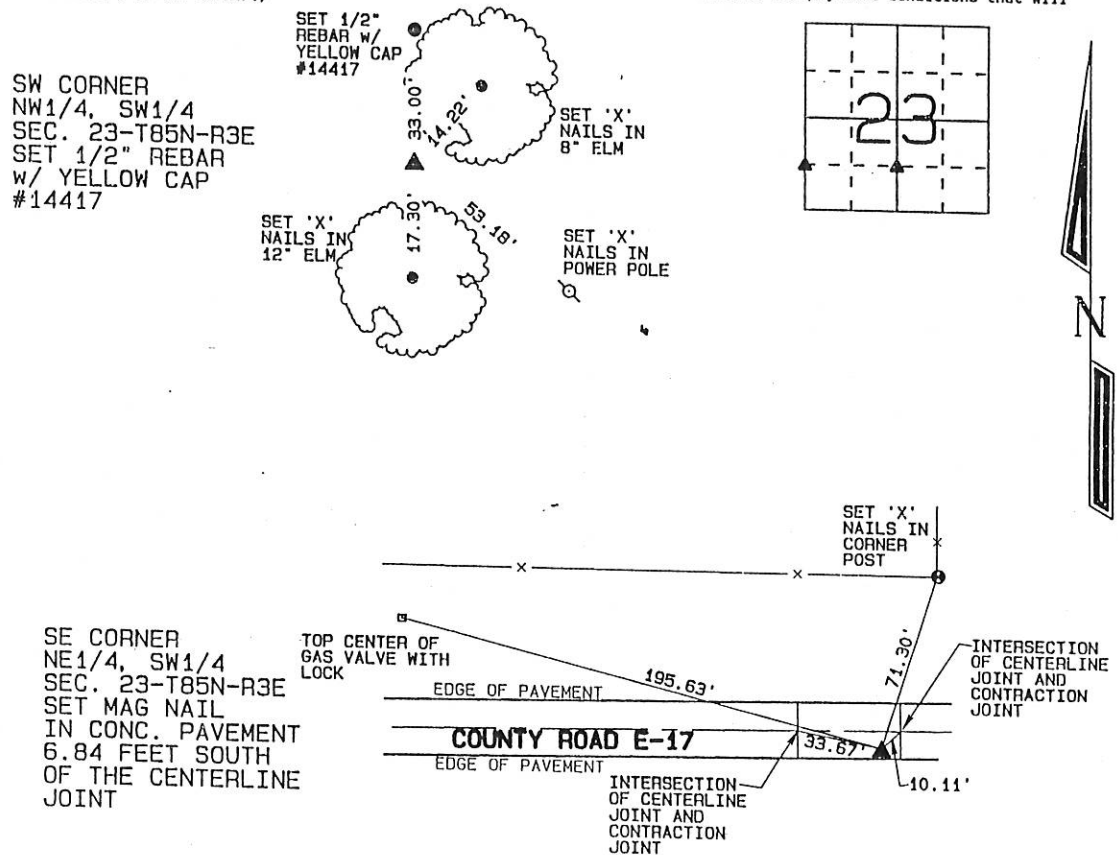
(BOOK, PAGE / INST. NO. / CABINET, SLIDE)

(Show reason for preparing this certificate, the evidence and detailed procedures used in establishing the corner positions and monumentation found or placed.)

Monument Description and Remarks: THE SW CORNER OF THE NW1/4 OF THE SW1/4 OF SEC. 23-T85N-R3E WAS ESTABLISHED 139 FEET SOUTH OF THE CENTER OF EMMET STREET AND ON A STRAIGHT LINE FROM THE WEST QUARTER CORNER TO THE SW CORNER OF SECTION 23 AS INDICATED IN A DEED FILED ON APRIL 4, 1903 IN BOOK 66, PAGE 628.
THE SE CORNER OF THE NE1/4 OF THE SW1/4 OF SEC. 23-T85N-R3E WAS ESTABLISHED AT THE MIDPOINT BETWEEN THE CENTER AND SOUTH QUARTER CORNER OF SAID SECTION 23 AS OCCUPIED.

PLAN - VIEW

(Show a minimum of three reference ties to durable physical objects, relevant monuments and physical conditions that will enable recovery of the corner.)



I hereby certify that this land surveying document was prepared and the related survey work was performed by me or under my direct personal supervision and that I am a duly licensed Land Surveyor under the laws of the State of Iowa.

David P. Schneider P.L.S. #14417 Date: 7/12/2002
My license renewal date is December 31, 2002.
Pages or sheets covered by this seal: THIS SHEET ONLY

SCHNEIDER
Land Surveying & Planning

P.O. Box 105 Peosta, Iowa 52068
Ph. #563-556-9055 Fax#563-556-9054



List Corners to be Indexed

Corners	Section	Twp	Range
SW CORNER NW1/4, SW1/4	23	85N	3E
SE CORNER NE1/4, SW1/4	23	85N	3E