



Document 07-2173

Book 2 Page 562 Type 15 001 Pages 1
Date 5/03/2007 Time 11:13 AM
Rec Amt \$7.00

ARLENE SCHAUF, RECORDER
JACKSON COUNTY IOWA

PREPARED BY: MICHAEL J. WEBER, WEBER SURVEYING, LLC, 26789 46TH AVE, BERNARD, IA 52032 (563) 879-4173

UNITED STATES PUBLIC LAND SURVEY CORNER CERTIFICATE OF

LAND SURVEY MONUMENTS SITUATED IN SECTION 14, TOWNSHIP 85 NORTH, RANGE 3 EAST
OF THE FIFTH PRINCIPAL MERIDIAN, JACKSON COUNTY, IOWA.
PREVIOUSLY RECORDED NONE UNLESS OTHERWISE NOTED

(book, page, document number, etc.)

(Show reason for preparing this certificate, the evidence and detailed procedures used in establishing the corner positions and monumentation found or placed.)

Monument Description and Remarks:

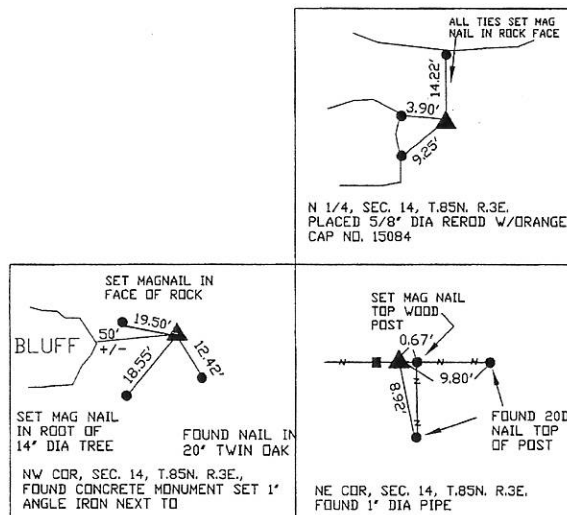
-NW COR, SEC. 14, T.85N. R.3E., FOUND CONCRETE MONUMENT USING SEC. COR TIE FROM THE JACKSON COUNTY ENGR. OFFICE

-N 1/4, SEC. 14, T.85N. R.3E. PLACED 5/8" DIA REROD W/ORANGE CAP NO. 15084
MIDWAY & ONLINE BETWEEN THE NW & NE COR., SEC. 14

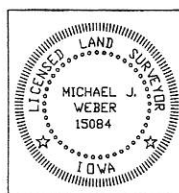
-NE COR, SEC. 14, T.85N. R.3E.
FOUND 1" DIA PIPE PER SEC. COR CERT BOOK 2, PAGE 44, INSTR. NO. 03-1906

(Show a minimum of three reference ties to durable physical objects, relevant monuments and physical conditions that will enable recovery of the corner.)

PLAN - VIEW



DWG. NO. 261-AVE-PARCEL-2



I HEREBY CERTIFY THAT THIS LAND SURVEYING DOCUMENT WAS
PREPARED AND THE RELATED SURVEY WORK WAS PERFORMED BY ME OR
UNDER MY DIRECT PERSONAL SUPERVISION AND THAT I AM A DULY
LICENSED LAND SURVEYOR UNDER THE LAWS OF THE STATE OF IOWA.

Michael J. Weber *May 1, 2007*
MICHAEL J. WEBER (DATE)

LICENSE NUMBER 15084

MY LICENSE RENEWAL DATE IS DECEMBER 31, 2007

SHEETS COVERED BY THIS SEAL: *This Sheet*

List Corners to be Indexed			
Corner	Sec	Twp	Range
NW COR.	14	85N	3E
NORTH 1/4	14	85N	3E
NE COR.	14	85N	3E

Book 2 Page 562



Document 08-1666

Book 2 Page 617 Type 15 001 Pages 1
Date 4/29/2008 Time 8:19 AM
Rec Amt \$7.00

ARLENE SCHAUF, RECORDER/REGISTRAR
JACKSON COUNTY IOWA

PREPARED BY: MICHAEL J. WEBER, WEBER SURVEYING, LLC, 26789 46TH AVE, BERNARD, IA 52032 (563) 879-4173

UNITED STATES PUBLIC LAND SURVEY CORNER CERTIFICATE OF

LAND SURVEY MONUMENTS SITUATED IN SECTION 14, TOWNSHIP 85 NORTH, RANGE 3 EAST
OF THE FIFTH PRINCIPAL MERIDIAN, JACKSON COUNTY, IOWA.
PREVIOUSLY RECORDED NONE UNLESS OTHERWISE NOTED

(book, page, document number, etc.)

(Show reason for preparing this certificate, the evidence and detailed procedures used in establishing the corner positions and monumentation found or placed.)

Monument Description and Remarks:

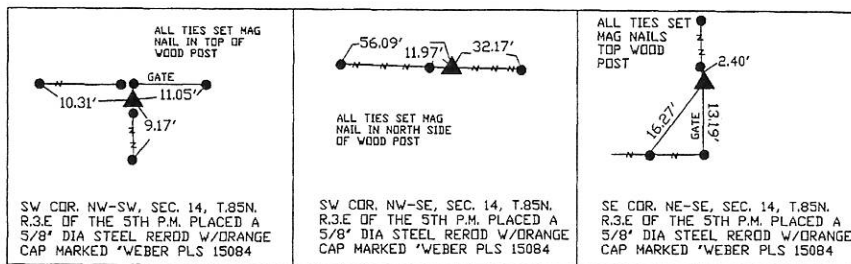
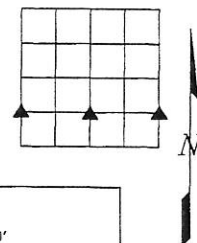
-SW COR. NW-SW, SEC. 14, T.85N. R.3.E OF THE 5TH P.M. PLACED A 5/8" DIA STEEL REROD W/ORANGE CAP MARKED "WEBER PLS 15084, ESTABLISHED CORNER AT THE INTERSECTION OF OCCUPATION FENCELINES RUNNING EAST, WEST & SOUTH

-SW COR. NW-SE, SEC. 14, T.85N. R.3.E OF THE 5TH P.M. PLACED A 5/8" DIA STEEL REROD W/ORANGE CAP MARKED "WEBER PLS 15084, ESTABLISHED CORNER AT THE INTERSECTION OF OCCUPATION FENCELINE RUNNING EAST & WEST WITH THE LINE FROM THE NORTH 1/4 CORNER TO THE SOUTH 1/4 CORNER.

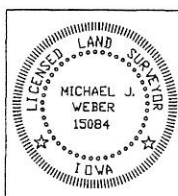
-SE COR. NE-SE, SEC. 14, T.85N. R.3.E OF THE 5TH P.M. PLACED A 5/8" DIA STEEL REROD W/ORANGE CAP MARKED "WEBER PLS 15084 ESTABLISHED CORNER AT A PROPORTIONED DISTANCE BETWEEN THE EAST 1/4 OF SECTION 14 AND THE EAST 1/4 CORNER OF SECTION 23 INLINE WITH FENCELINE RUNNING NORTH & SOUTH

(Show a minimum of three reference ties to durable physical objects, relevant monuments and physical conditions that will enable recovery of the corner.)

PLAN - VIEW



DWG. NO. IRWIN



I HEREBY CERTIFY THAT THIS LAND SURVEYING DOCUMENT WAS
PREPARED AND THE RELATED SURVEY WORK WAS PERFORMED BY ME OR
UNDER MY DIRECT PERSONAL SUPERVISION AND THAT I AM A DULY
LICENSED LAND SURVEYOR UNDER THE LAWS OF THE STATE OF IOWA.

Michael J. Weber (Signature)
MICHAEL J. WEBER (DATE) April 11, 2008

LICENSE NUMBER 15084

MY LICENSE RENEWAL DATE IS DECEMBER 31, 2009

SHEETS COVERED BY THIS SEAL: _____

List Corners to be Indexed

Corner	Sec	Twp	Range
NW COR. NW-SW	14	85N	3E
SW COR. NW-SE	14	85N	3E
SE COR. NE-SE	14	85N	3E



Document 08-2268

Book 2 Page 621 Type 15 001 Pages 1

Date 6/10/2008 Time 2:43 PM

Rec Amt \$7.00

ARLENE SCHAUF, RECORDER/REGISTRAR
JACKSON COUNTY IOWA

PREPARED BY: MICHAEL J. WEBER, WEBER SURVEYING, LLC, 26789 46TH AVE, BERNARD, IA 52032 (563) 879-4173

UNITED STATES PUBLIC LAND SURVEY CORNER CERTIFICATE OF

LAND SURVEY MONUMENTS SITUATED IN SECTION 14, TOWNSHIP 85 NORTH, RANGE 3 EAST
OF THE FIFTH PRINCIPAL MERIDIAN, JACKSON COUNTY, IOWA.
PREVIOUSLY RECORDED DOC NO. 08-1666 BOOK 2, PAGE 617

(book, page, document number, etc.)

(Show reason for preparing this certificate, the evidence and detailed procedures used in establishing the corner positions and monumentation found or placed.)

Monument Description and Remarks:

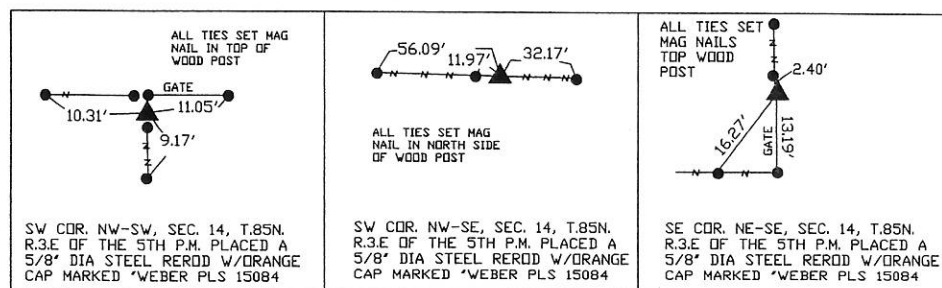
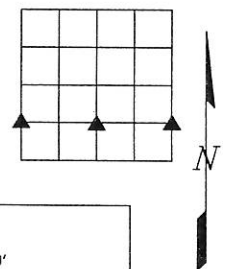
-SW COR. NW-SW, SEC. 14, T.85N. R.3E OF THE 5TH P.M. PLACED A 5/8" DIA STEEL ROD W/ORANGE CAP MARKED "WEBER PLS 15084, ESTABLISHED CORNER AT THE INTERSECTION OF OCCUPATION FENCELINES RUNNING EAST, WEST & SOUTH

-SW COR. NW-SE, SEC. 14, T.85N. R.3E OF THE 5TH P.M. PLACED A 5/8" DIA STEEL ROD W/ORANGE CAP MARKED "WEBER PLS 15084, ESTABLISHED CORNER AT THE INTERSECTION OF OCCUPATION FENCELINE RUNNING EAST & WEST WITH THE LINE FROM THE NORTH 1/4 CORNER TO THE SOUTH 1/4 CORNER.

-SE COR. NE-SE, SEC. 14, T.85N. R.3E OF THE 5TH P.M. PLACED A 5/8" DIA STEEL ROD W/ORANGE CAP MARKED "WEBER PLS 15084 ESTABLISHED CORNER AT A PROPORTIONED DISTANCE BETWEEN THE EAST 1/4 OF SECTION 14 AND THE EAST 1/4 CORNER OF SECTION 23 INLINE WITH FENCELINE RUNNING NORTH & SOUTH

(Show a minimum of three reference ties to durable physical objects, relevant monuments and physical conditions that will enable recovery of the corner.)

PLAN - VIEW



DWG. NO. IRWIN

	I HEREBY CERTIFY THAT THIS LAND SURVEYING DOCUMENT WAS PREPARED AND THE RELATED SURVEY WORK WAS PERFORMED BY ME OR UNDER MY DIRECT PERSONAL SUPERVISION AND THAT I AM A DULY LICENSED LAND SURVEYOR UNDER THE LAWS OF THE STATE OF IOWA.		List Corners to be Indexed	
	<i>Michael J. Weber</i> MICHAEL J. WEBER LICENSE NUMBER 15084 MY LICENSE RENEWAL DATE IS DECEMBER 31, 2009		Corner	Sec Twp Range
	(DATE) <i>June 10, 2008</i>		SW COR. NW-SW	14 85N 3E
	SHEETS COVERED BY THIS SEAL: <i>This Sheet</i>		SW COR. NW-SE	14 85N 3E
			SE COR. NE-SE	14 85N 3E

Book 2 Page 621