

## UNITED STATES PUBLIC LAND SURVEY CORNER CERTIFICATE

OF

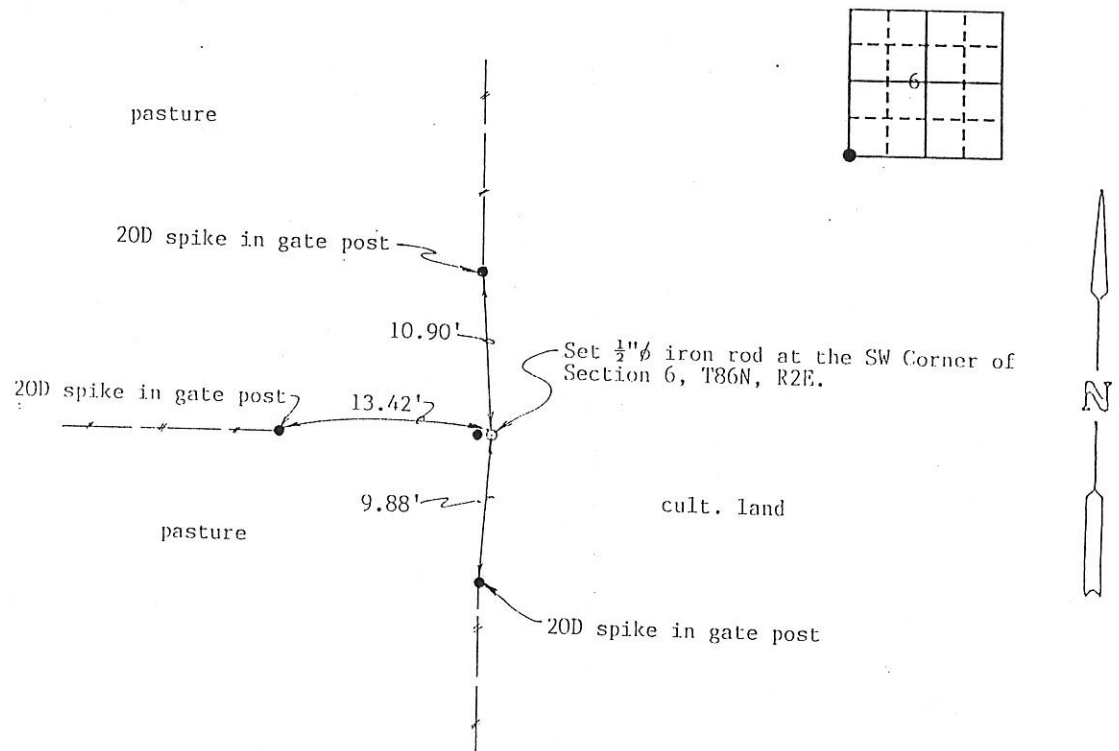
Land Survey Monuments situated in Section 6, Township 86 North, Range 2 East, of the Fifth Principal Meridian, Jackson County, Iowa.  
 Previously recorded in no corner certificate on file in County Recorder's Office.  
 (book, page, document number, etc.)

(Show reason for preparing this certificate, the evidence and detailed procedures used in establishing the corner positions and monumentation found or placed.)

Monument Description and Remarks: Could not find any evidence of a corner monument. Re-  
established corner using measurements to other corners and existing occupation.

## PLAN - VIEW

(Show a minimum of three reference ties to durable physical objects, relevant monuments and physical conditions that will enable recovery of the corner.)



I hereby certify that the survey work was completed and this certificate was prepared by me or under my direct personal supervision and that I am a duly registered land surveyor under the laws of the state of Iowa.

Signature: Roger R. Mohr  
 Name typed or printed: Roger R. Mohr

Date: December 21, 1990 Reg. No. 10165

SEAL



Corners	List Corners to be Indexed Section	Twp	Range
SW Cor.	6	86N	2E

FILE NO. 1437  
 BOOK 1 PAGE 31

1991 JAN -3 AM 9:50

SHIRLEY RITEHOUR  
 JACKSON COUNTY, IOWA  
 RECORDER

See 5.02

# UNITED STATES PUBLIC LAND SURVEY CORNER CERTIFICATE

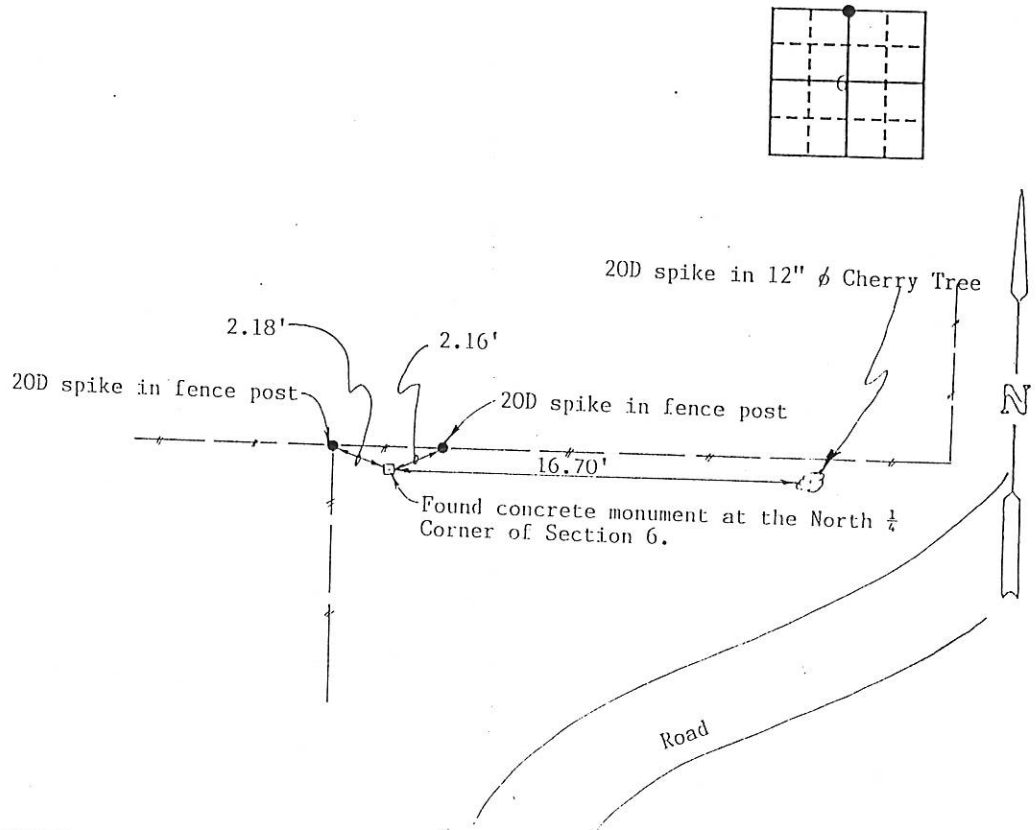
OF

Land Survey Monuments situated in Section 6, Township 86 North, Range 2 East, of the Fifth Principal Meridian, Jackson County, Iowa.  
Previously recorded in no corner certificate on file in County Recorder's Office.  
(book, page, document number, etc.)

(Show reason for preparing this certificate, the evidence and detailed procedures used in establishing the corner positions and monumentation found or placed.)  
Monument Description and Remarks: Found concrete monument at the corner.

## PLAN - VIEW

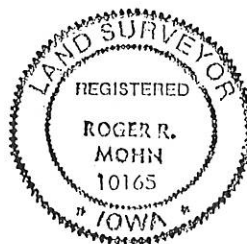
(Show a minimum of three reference ties to durable physical objects, relevant monuments and physical conditions that will enable recovery of the corner.)



I hereby certify that the survey work was completed and this certificate was prepared by me or under my direct personal supervision and that I am a duly registered land surveyor under the laws of the state of Iowa.

Signature: Roger R. Mohn  
Name typed or printed: Roger R. Mohn

Date: December 21, 1990 Reg. No. 10165



SEAL

Corners	List Corners to be Indexed	Section	Twp	Range
N 1/4 Cor.	6	86N	2E	

FILE NO 1438  
BOOK 1 PAGE 32

1991 JAN -3 AM 9:50

SHIRLY RITENOUR  
JACKSON COUNTY, IOWA  
RECORDER

*See 5.02*

## UNITED STATES PUBLIC LAND SURVEY CORNER CERTIFICATE

OF

Land Survey Monuments situated in Section 6, Township 86 North, Range 2 East, of the Fifth Principal Meridian, Jackson County, Iowa.  
 Previously recorded in no corner certificate on file in County Recorder's Office.  
 (book, page, document number, etc.)

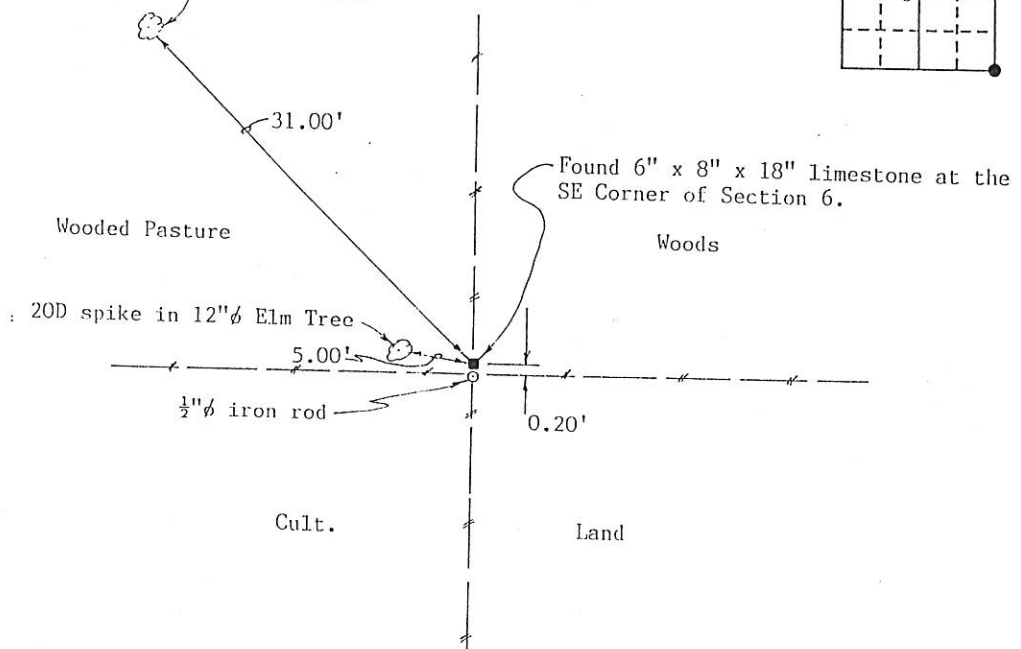
(Show reason for preparing this certificate, the evidence and detailed procedures used in establishing the corner positions and monumentation found or placed.)

Monument Description and Remarks: Found 6" x 8" x 18" limestone at the corner.

## PLAN - VIEW

(Show a minimum of three reference ties to durable physical objects, relevant monuments and physical conditions that will enable recovery of the corner.)

20D spike in 12"  $\phi$  W. Oak Tree



I hereby certify that the survey work was completed and this certificate was prepared by me or under my direct personal supervision and that I am a duly registered land surveyor under the laws of the state of Iowa.

Signature: Roger R. Mohn  
 Name typed or printed: Roger R. Mohn

Date: December 21, 1990 Reg. No. 10165

SEAL



Corners	List Corners to be Indexed Section	Twp	Range
SE Cor.	6	86N	2E

FILE NO. 1439  
 BOOK 1 PAGE 33

1991 JAN -3 AM 9:50

SHIRLY RITENOUR  
 JACKSON COUNTY, IOWA  
 RECORDER

See 5.02

FILE NO. 99-3743  
BOOK 1 PAGE 396

99 SEP 22 AM 10:01

PHYLLIS M. GERLACH  
JACKSON COUNTY, IOWA  
RECORDED 2028

Prepared by Wm. Burger Land Surveyors 510 3rd Street West Court, Worthington, Iowa

# UNITED STATES PUBLIC LAND SURVEY CORNER CERTIFICATE

Land Survey Monuments situated in Section 6, Township 86N, Range 2E, of the Fifth Principal Meridian, JACKSON County, Iowa. Previously recorded in N/A in County Recorder's Office.

Monument Description and Remarks: (No Corner Certificates found at the County Recorders Office)

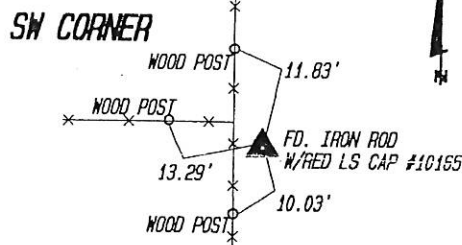
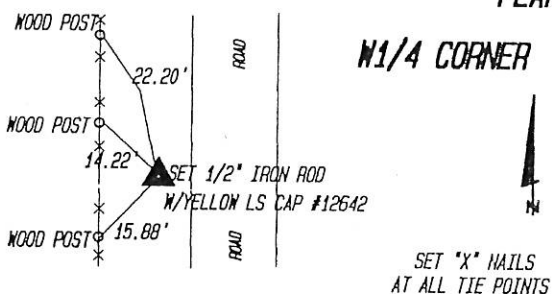
N1/4 CORNER - SET 1/2" IRON ROD W/YELLOW LS CAP #12642 - USED FENCELINE EVIDENCE AND SET ON LINE BETWEEN THE SW CORNER AND THE NW CORNER

SW CORNER - FD. IRON ROD W/RED LS CAP #10165

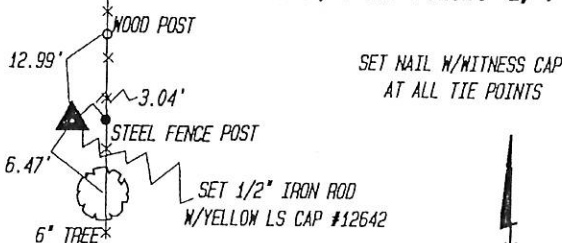
NE CORNER NW FRAC. 1/4 SW FRAC. 1/4 - SET 1/2" IRON ROD W/YELLOW LS CAP #12642 - USED FENCELINE EVIDENCE AND SET CORNER 1320' WEST OF CENTER OF SECTION

SE CORNER SW FRAC. 1/4 SW FRAC. 1/4 - SET 1/2" IRON ROD W/YELLOW LS CAP #12642 ON LINE BETWEEN SW CORNER AND THE AND 1320' WEST OF THE S1/4 CORNER

## PLAN VIEW

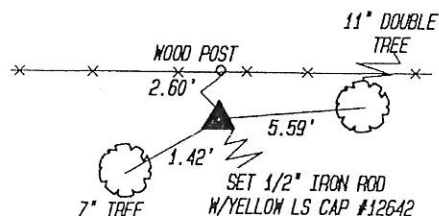


## SE CORNER SW FRAC. 1/4 SW FRAC. 1/4

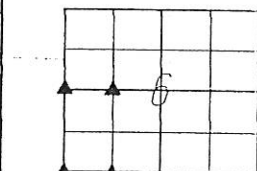


SET "X" NAILS  
AT ALL TIE POINTS

## NE CORNER NW FRAC. 1/4 SW FRAC. 1/4



SET "X" NAILS  
AT ALL TIE POINTS



SEC. 6 TWP. 86N RANGE 2E

I hereby certify that this land surveying document was prepared and related survey work was performed by me or under my direct personal supervision and that I am a duly licensed Land Surveyor under the laws of the State of Iowa.

William H. Burger 6/12/95  
William H. Burger Date

License number 12642

My license renewal date is December 31, 2000

Pages or Sheets covered by this seal: Sheet 1 of 1

## CORNERS TO BE INDEXED

Corner

NE COR. NW FRAC. 1/4 SW FRAC. 1/4 Section 6 Twp 86N Range 2E  
SE COR. SW FRAC. 1/4 SW FRAC. 1/4 Section 6 Twp 86N Range 2E  
N1/4 CORNER Section 6 Twp 86N Range 2E  
SW CORNER Section 6 Twp 86N Range 2E