

FILE NO. 03-1822
BOOK 2 PAGE 3

03 APR -1 PM 12:25

PHYLLIS M. GERLACH
JACKSON COUNTY, IOWA
RECORDER

Prepared by Wm. Burger Land Surveyors

510 3rd Street West Court, Worthington, Iowa

Phone 319 - 855 2828

fee \$6.00

UNITED STATES PUBLIC LAND SURVEY CORNER CERTIFICATE

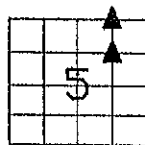
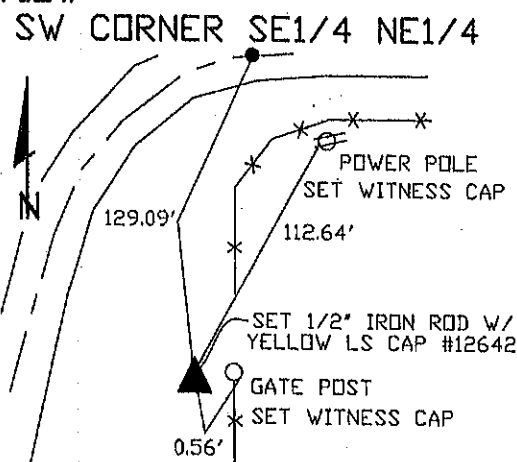
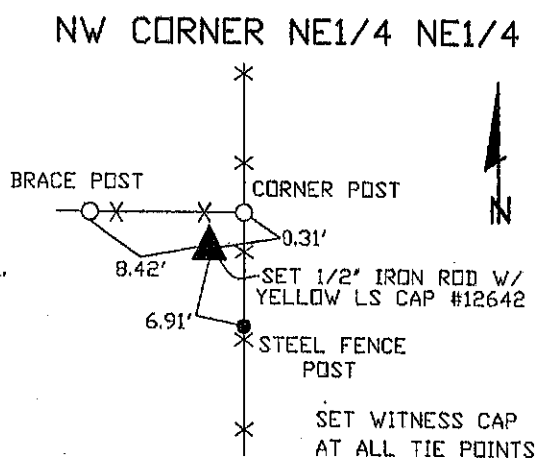
Land Survey Monuments situated in Section 5, Township 86N, Range 2E, of the Fifth Principal Meridian, Jackson County, Iowa. Previously recorded in N/A in the Office of the County Recorder

Monument Description and Remarks: (No Corner Certificates found at the County Recorders Office)

NW CORNER NE1/4 NE1/4 - SET 1/2" IRON ROD W/YELLOW LS CAP #12642 - USED EXISTING FENCELINE EVIDENCE AND SET 1320' WEST OF NE CORNER; METAL DETECTED AND PROBED AREA BUT NOTHING WAS FOUND; NOTE: 1320' FELL 1' WEST OF CORNER POST

SW CORNER NE1/4 NE1/4 - SET 1/2" IRON ROD W/YELLOW LS CAP #12642 - RUN STRAIGHT LINES FROM OPPOSITE 1/4 1/4 CORNERS AND USED EXISTING FENCELINE EVIDENCE TO SET THIS CORNER; SEARCHED AREA AND NOTHING WAS FOUND

PLAN VIEW



SEAL

SEC. 5 TWP. 86N RANGE 2E

I hereby certify that this land surveying document was prepared and related survey work was performed by me or under my direct personal supervision and that I am a duly licensed Land Surveyor under the laws of the State of Iowa.

William H. Burger 3/28/03
William H. Burger Date

License number 12642

My license renewal date is December 31, 2004

Pages or Sheets covered by this seal: Sheet 1 of 1

CORNERS TO BE INDEXED

SW CORNER NE1/4 NE1/4 5 86N 2E

NW CORNER NE1/4 NE1/4 5 86N 2E

FILE NO. 04-4602
PAGE 372

04 OCT 13 AM 7:21

PHYLLIS M. GERLACH
JACKSON COUNTY, IOWA

Prepared by Wm. Burger Land Surveyors

510 3rd Street West Court, Worthington, Iowa

RECORDED

Fee 7.00

UNITED STATES PUBLIC LAND SURVEY CORNER CERTIFICATE

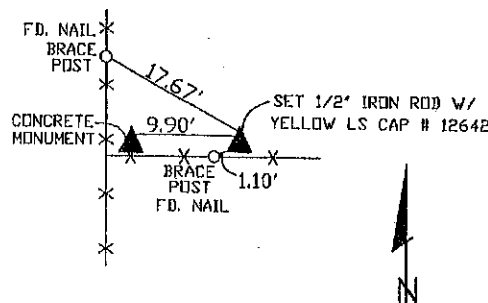
Land Survey Monuments situated in Section 5, Township 86N, Range 2E, of the Fifth Principal Meridian Jackson County, Iowa. Previously recorded in N/A in the Office of the County Recorder

Monument Description and Remarks: (No Corner Certificates Found at the County Recorder's Office)

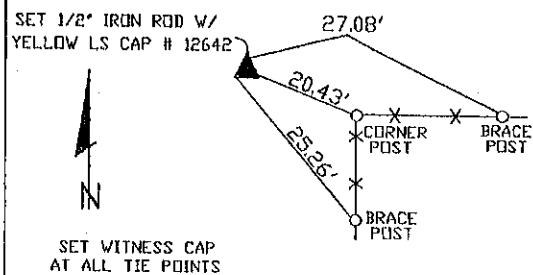
NE CORNER - SET 1/2" IRON ROD W/YELLOW LS CAP #12642 - SET ON TOWNSHIP LINE 9.9 FEET EAST OF CONCRETE MONUMENT FOR SE CORNER OF SECTION 32 ACCORDING TO ORIGINAL NOTES
SE CORNER NE1/4 NE1/4 - SET 1/2" IRON ROD W/YELLOW LS CAP #12642 - SET ON LINE AND MIDWAY BETWEEN THE EAST 1/4 CORNER AND THE NE CORNER AT A PROPORTIONATE DISTANCE
NW CORNER NE1/4 NE1/4 - FOUND 1/2" IRON ROD W/YELLOW LS CAP #12642
SW CORNER NE1/4 NE1/4 - SET 1/2" IRON ROD W/YELLOW LS CAP #12642 - RUN STRAIGHT LINES FROM OPPOSITE 1/4 1/4 CORNERS AND SET AT POINT OF INTERSECTION

PLAN VIEW

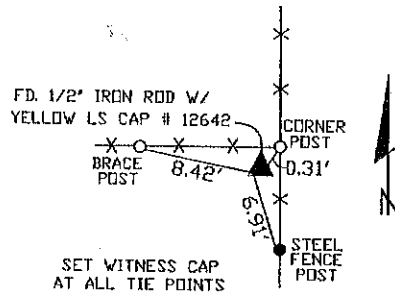
NE CORNER



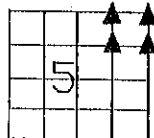
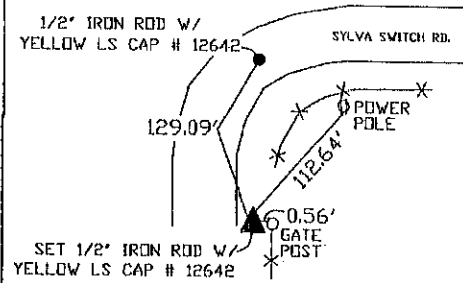
SE CORNER NE1/4 NE1/4



NW CORNER NE1/4 NE1/4



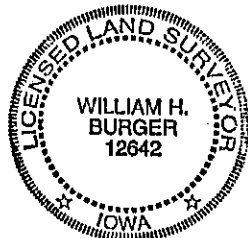
SW CORNER NE1/4 NE1/4



SEC. 5 TWP. 86N RANGE 2E

CORNERS TO BE INDEXED

NE CORNER	5	86N	2E
SE CORNER NE1/4 NE1/4	5	86N	2E
NW CORNER NE1/4 NE1/4	5	86N	2E
SW CORNER NE1/4 NE1/4	5	86N	2E



I hereby certify that this land surveying document was prepared and related survey work was performed by me or under my direct personal supervision and that I am a duly licensed Land Surveyor under the laws of the State of Iowa.

William H. Burger 9/25/04
William H. Burger Date

License number 12642

My license renewal date is December 31, 2004

Pages or Sheets covered by this seal Sheet 1 of 1



Document 07-3478

Book 2 Page 577 Type 15 001 Pages 1

Date 8/03/2007 Time 10:49 AM

Rec Amt \$7.00

ARLENE SCHAUF, RECORDER
JACKSON COUNTY IOWA

Prepared by Mm. Burger Land Surveyors

510 3rd Street West Court, Worthington, Iowa 52070

Phone 563 - 855 2020

UNITED STATES PUBLIC LAND SURVEY CORNER CERTIFICATELand Survey Monuments situated in Section 5, Township 86N, Range 2E, of the Fifth Principal Meridian, Jackson County, Iowa. Previously recorded in SEE NOTE in the Office of the County Recorder**Monument Description and Remarks:**

S1/4 CORNER - FD. 1" IRON ROD W/ NO CAP

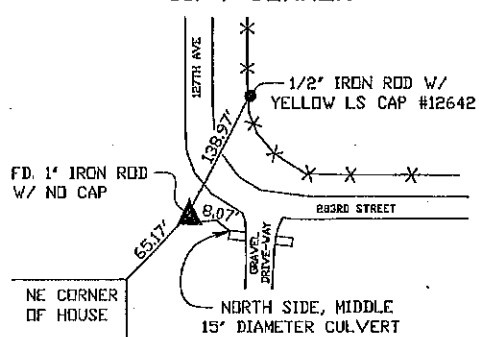
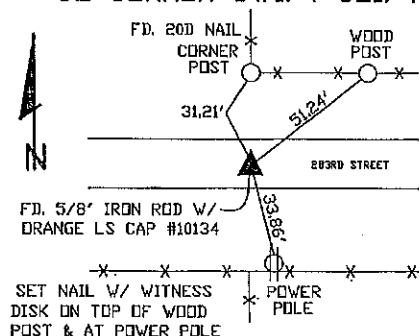
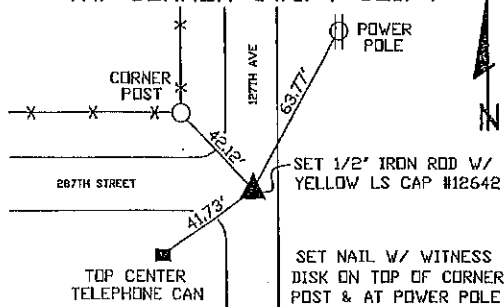
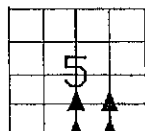
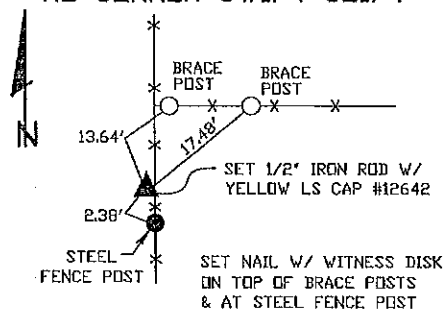
SE CORNER SW1/4 SE1/4 - FOUND 5/8" IRON ROD WITH ORANGE LS CAP #10134

NW CORNER SW1/4 SE1/4 - SET 1/2" IRON ROD W/ YELLOW LS CAP #12642 - SET AT THE INTERSECTION OF 287TH STREET WITH 127TH AVENUE

NE CORNER SW1/4 SE1/4 - SET 1/2" IRON ROD W/ YELLOW LS CAP #12642 - RUN STRAIGHT LINES FROM OPPOSITE 1/4 1/4 CORNERS AND SET AT THE POINT OF INTERSECTION

NOTE: THE S1/4 CORNER WAS PREVIOUSLY RECORDED IN THE OFFICE OF THE JACKSON COUNTY RECORDER BK. 1, PG. 648

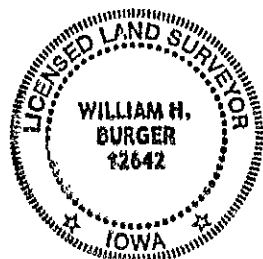
THE SE CORNER SW1/4 SE1/4 WAS PREVIOUSLY RECORDED IN THE OFFICE OF THE JACKSON COUNTY RECORDER BK. 1, PG. 649

PLAN VIEW**S1/4 CORNER****SE CORNER SW1/4 SE1/4****NW CORNER SW1/4 SE1/4****NE CORNER SW1/4 SE1/4**

SEC. 5 TWP. 86N RANGE 2E

CORNERS TO BE INDEXED

S1/4 CORNER	5	86N	2E
SE CORNER SW1/4 SE1/4	5	86N	2E
NW CORNER SW1/4 SE1/4	5	86N	2E
NE CORNER SW1/4 SE1/4	5	86N	2E



I hereby certify that this land surveying document was prepared and related survey work was performed by me or under my direct personal supervision and that I am a duly licensed Land Surveyor under the laws of the State of Iowa.

William H. Burger 7/06/07
Date

William H. Burger

License number 12642

My license renewal date is December 31, 2008

Pages or Sheets covered by this seal Sheet 1 of 1

Book 2 Page 577



Document 07-3479

Book 2 Page 578 Type 15 001 Pages 1

Date 8/03/2007 Time 10:49 AM

Rec Amt \$7.00

ARLENE SCHAUF, RECORDER
JACKSON COUNTY IOWA

Prepared by Wm. Burger LandSurveyors 610 3rd Street West Court, Worthington, Iowa 52078 Phone 663 - 855 2028

UNITED STATES PUBLIC LAND SURVEY CORNER CERTIFICATE

Land Survey Monuments situated in Section 5, Township 86N, Range 2E, of the Fifth Principal Meridian, Jackson County, Iowa. Previously recorded in N/A in the Office of the County Recorder

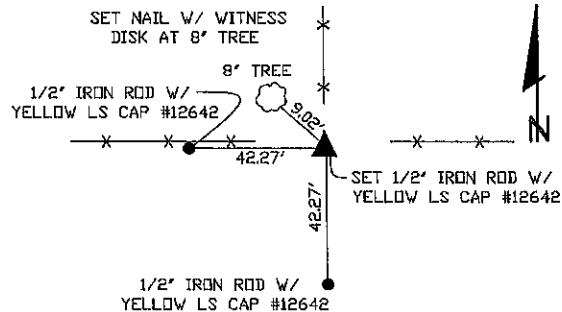
Monument Description and Remarks: (No Corner Certificates found at the County Recorders Office)

NW CORNER NE1/4 SE1/4 - SET 1/2' IRON ROD W/ YELLOW LS CAP #12642 - SET ON LINE AND MIDWAY BETWEEN THE CENTER OF SECTION AND THE NE CORNER NE1/4 SE1/4

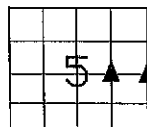
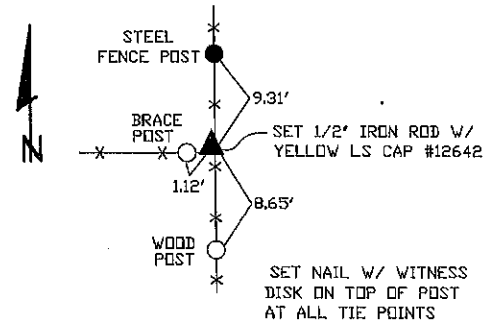
NE CORNER NE1/4 SE1/4 - SET 1/2' IRON ROD W/ YELLOW LS CAP #12642 - USED EXISTING FENCELINE EVIDENCE AND SET AT THE CORNER POST

PLAN VIEW

NW CORNER NE1/4 SE1/4



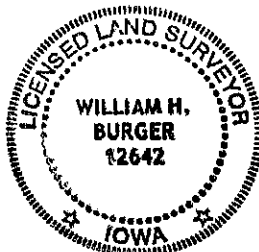
NE CORNER NE1/4 SE1/4



SEC. 5 TWP. 86N RANGE 2E

CORNERS TO BE INDEXED

NW CORNER NE1/4 SE1/4	5	86N	2E
NE CORNER NE1/4 SE1/4	5	86N	2E



I hereby certify that this land surveying document was prepared and related survey work was performed by me or under my direct personal supervision and that I am a duly licensed Land Surveyor under the laws of the State of Iowa.

William H. Burger 7/04/07
William H. Burger Date

License number 12642

My license renewal date is December 31, 2008

Pages of Sheets covered by this seal Sheet 1 of 1

Book 2 Page 578



Document 12-3211

Book 3 Page 59 Type 15 001 Pages 1

Date 8/03/2012 Time 8:33 AM

Rec Amt \$7.00

ARLENE SCHAUF, RECORDER/REGISTRAR
JACKSON COUNTY IOWA

Prepared by Wm. Burger Land Surveyor 510 3rd Street West Court, Worthington, Iowa Phone 563 - 855 2028

UNITED STATES PUBLIC LAND SURVEY CORNER CERTIFICATE

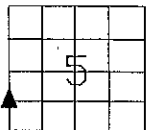
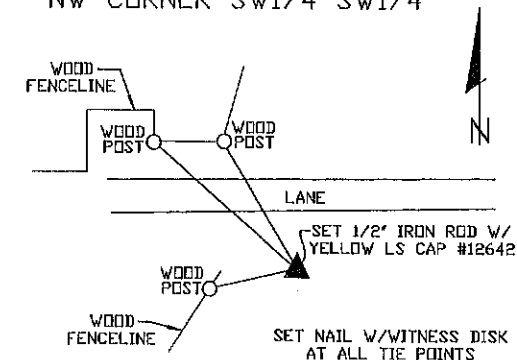
Land Survey Monuments situated in Section 5, Township 86N, Range 2E, of the Fifth Principal Meridian, Dubuque County, Iowa. Previously recorded in N/A in the Office of the County Recorder

Monument Description and Remarks: (No Corner Certificates found at the County Recorders Office)

NW CORNER SW1/4 SW1/4 - SET 1/2" IRON ROD W/ YELLOW LS CAP #12642 - SET ONLINE AND
MIDWAY BETWEEN THE SW CORNER AND THE W1/4 CORNER

PLAN VIEW

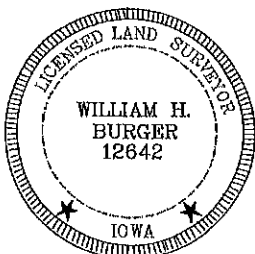
NW CORNER SW1/4 SW1/4



SEC. 5 TWP. 86N RANGE 2E

CORNERS TO BE INDEXED

NW CORNER SW1/4 SW1/4 5 86N 2E



I hereby certify that this land surveying document was prepared and related survey work was performed by me or under my direct personal supervision and that I am a duly licensed Land Surveyor under the laws of the State of Iowa.

William H. Burger 7/20/12
William H. Burger Date

License number 12642

My license renewal date is December 31, 2012

Pages or Sheets covered by this seal Sheet 1 of 1



Document 13-3528

Book 3 Page 110 Type 15 001 Pages 1

Date 8/19/2013 Time 2:15 PM

Rec Amt \$7.00

ARLENE SCHAUF, RECORDER/REGISTRAR
JACKSON COUNTY IOWA

Prepared by Wm. Burger LandSurveyor

610 3rd Street West Court, Northburg, Iowa

Phone 563 - 855 2022

UNITED STATES PUBLIC LAND SURVEY CORNER CERTIFICATE

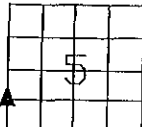
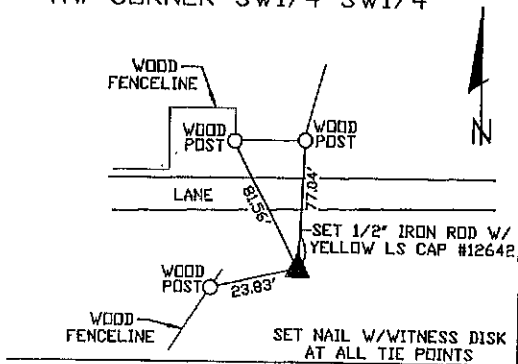
Land Survey Monuments situated in Section 5, Township 86N, Range 2E, of the Fifth Principal Meridian, Jackson County, Iowa. Previously recorded in BOOK 3, PAGE 59 in the Office of the County Recorder

Monument Description and Remarks: (No Corner Certificates found at the County Recorders Office)

NW CORNER SW1/4 SW1/4 - SET 1/2" IRON ROD W/ YELLOW LS CAP #12642 - SET ONLINE AND
MIDWAY BETWEEN THE SW CORNER AND THE W1/4 CORNER

PLAN VIEW

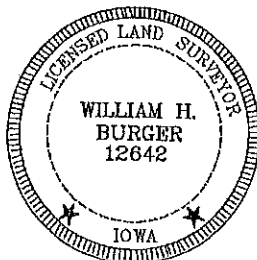
NW CORNER SW1/4 SW1/4



SEC. 5 TWP. 86N RANGE 2E

CORNERS TO BE INDEXED

NW CORNER SW1/4 SW1/4 5 86N 2E



I hereby certify that this land surveying document was prepared and related survey work was performed by me or under my direct personal supervision and that I am a duly licensed Land Surveyor under the laws of the State of Iowa.

William H. Burger 10/9/12
Date

William H. Burger

License number 12642

My license renewal date is December 31, 2012

Pages or Sheets covered by this seal Sheet 1 of 1



Document 24-2113

Type 15 001

Pages 1

Date 8/06/2024 Time 8:33 AM

Rec Amt \$7.00

ARLENE SCHAUF, RECORDER/REGISTRAR
JACKSON COUNTY IOWA

PREPARED BY: MICHAEL J. WEBER, WEBER SURVEYING, LLC, 26789 46TH AVE, BERNARD, IA 52032 (563) 879-4173

UNITED STATES PUBLIC LAND SURVEY CORNER CERTIFICATE OF LAND SURVEY MONUMENTS SITUATED IN SECTION 5, TOWNSHIP 86 NORTH, RANGE 2 EAST OF THE FIFTH PRINCIPAL MERIDIAN, JACKSON COUNTY, IOWA. PREVIOUSLY RECORDED SEE NOTES BELOW

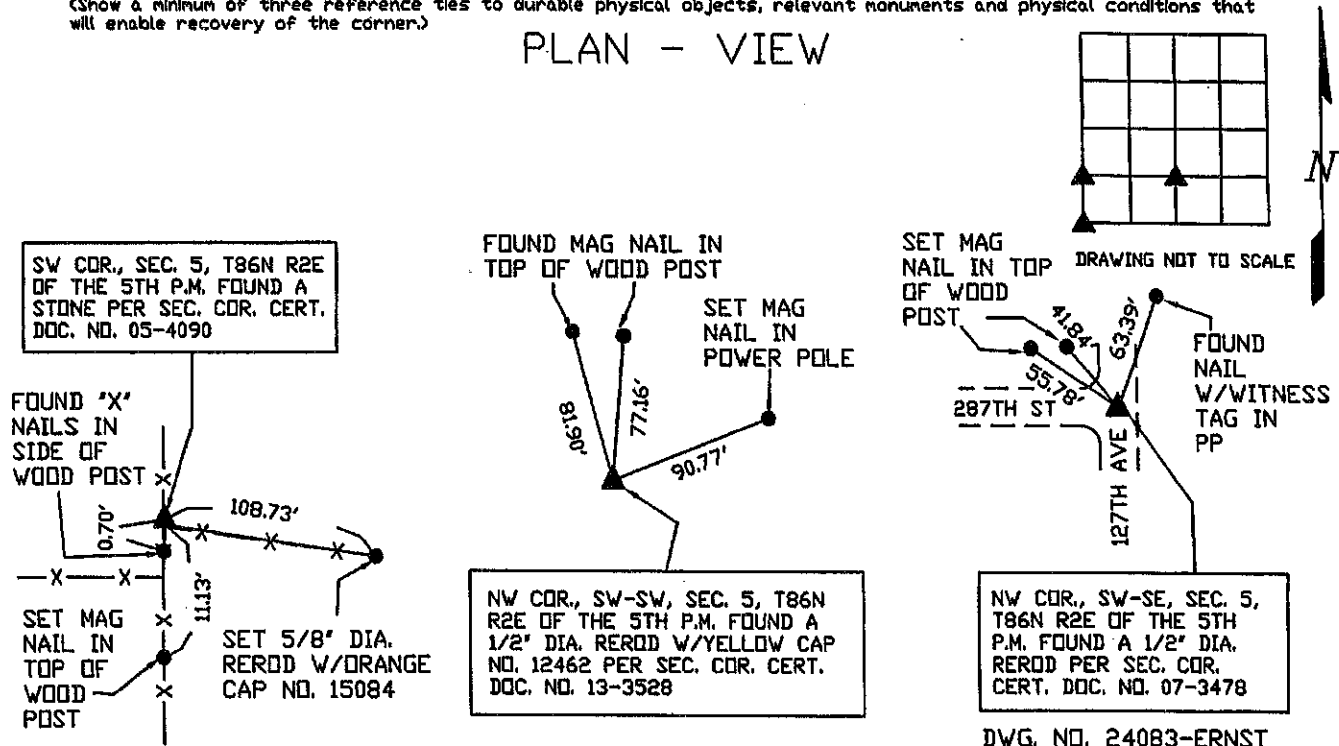
(book, page, document number, etc.)

(Show reason for preparing this certificate, the evidence and detailed procedures used in establishing the corner positions and monumentation found or placed.)

- NW COR., SW-SW, SEC. 5, T86N R2E OF THE 5TH P.M. FOUND A 1/2" DIA. REROD W/YELLOW CAP NO. 12462 PREVIOUSLY RECORDED DOC. NO. 13-3528, BK-3, PG-110. ESTABLISHED NEW TIES.
- NW COR., SW-SE, SEC. 5, T86N R2E OF THE 5TH P.M. FOUND A 1/2" DIA. REROD PREVIOUSLY RECORDED IN DOC. NO. 07-3478, BK-2, PG-577, ESTABLISHED NEW TIES.
- SW COR., SEC. 5, T86N R2E OF THE 5TH P.M. FOUND A STONE PREVIOUSLY RECORDED IN DOC. NO. 05-4090, BK-2 PG-395 INDEXED AS THE NW COR., SEC. 8, T86N R2E OF THE 5TH P.M., ESTABLISHED NEW TIES

(Show a minimum of three reference ties to durable physical objects, relevant monuments and physical conditions that will enable recovery of the corner.)

PLAN - VIEW



DWG. NO. 24083-ERNST

	I HEREBY CERTIFY THAT THIS LAND SURVEYING DOCUMENT WAS PREPARED AND THE RELATED SURVEY WORK WAS PERFORMED BY ME OR UNDER MY DIRECT PERSONAL SUPERVISION AND THAT I AM A DULY LICENSED LAND SURVEYOR UNDER THE LAWS OF THE STATE OF IOWA. <i>Michael J. Weber</i> MICHAEL J. WEBER (DATE) LICENSE NUMBER 15084 MY LICENSE RENEWAL DATE IS DECEMBER 31, 2025 SHEETS COVERED BY THIS SEAL: THIS SHEET	
	List Corners to be Indexed Corner Sec Twp Range NW COR., SW-SW 5-86N-2E NW COR., SW-SE 5-86N-2E SW COR., 5-86N-2E	