

FILE NO. 03-1007
PAGE 594

03 FEB 25 AM 10:26

Prepared by Wm. Burger Land Surveyors

510 3rd Street West Court, Worthington, Iowa

PHYLLIS M. GERLACH
JACKSON COUNTY, IOWA
RECORDER

Fee \$6.00

UNITED STATES PUBLIC LAND SURVEY CORNER CERTIFICATE

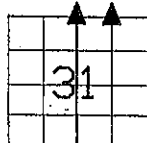
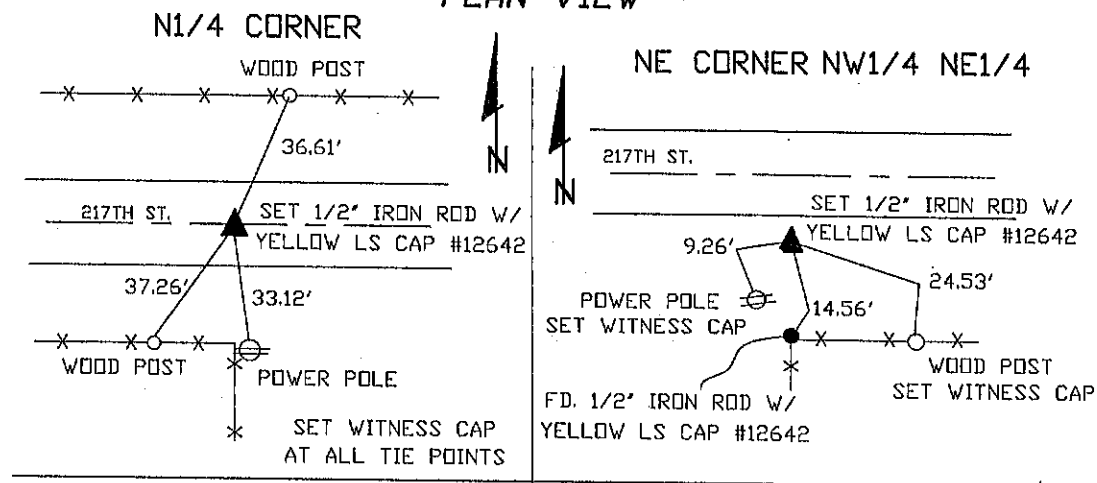
Land Survey Monuments situated in Section 31, Township 86N, Range 2E, of the Fifth Principal Meridian, Jackson County, Iowa. Previously recorded in N/A in the Office of the County Recorder

Monument Description and Remarks: (No Corner Certificates Found at the County Recorders Office)

N1/4 CORNER - SET 1/2" IRON ROD W/YELLOW LS CAP #12642 - SET CORNER IN LINE WITH LONGTIME FENCELINE TO THE SOUTH AND SET IN THE CENTERLINE OF 217TH STREET; METAL DETECTED AREA NOTHING WAS FOUND COUNTY ENGINEER HAS NO RECORDS ON THIS ROAD

NE CORNER NW1/4 NE1/4 - SET 1/2" IRON ROD W/YELLOW LS CAP #12642 - SET ON LINE BETWEEN THE N1/4 CORNER AND A CORNER POST AT THE NE CORNER SET CORNER IN LINE WITH LONGTIME FENCELINE RUNNING SOUTH (SAID FENCELINE APPROX. 1320' EAST OF N1/4 CORNER) METAL DETECTED THIS AREA AND NOTHING WAS FOUND

PLAN VIEW



SEAL

SEC. 31 TWP. 86N RANGE 2E

I hereby certify that this land surveying document was prepared and related survey work was performed by me or under my direct personal supervision and that I am a duly licensed Land Surveyor under the laws of the State of Iowa.

William H. Burger 2/24/03
William H. Burger Date

License number 12642

My license renewal date is December 31, 2004

Pages or Sheets covered by this seal Sheet 1 of 1

CORNERS TO BE INDEXED

N1/4 CORNER 31 86N 2E

NE CORNER NW1/4 NE1/4 31 86N 2E



Document 24-3213

Type 15 001

Pages 1

Date 11/26/2024 Time 8:23 AM

Rec Amt \$7.00

ARLENE SCHAUF, RECORDER/REGISTRAR
JACKSON COUNTY IOWA

PREPARED BY: MICHAEL J. WEBER, WEBER SURVEYING, LLC, 26789 46TH AVE, BERNARD, IA 52032 (563) 879-4173

UNITED STATES PUBLIC LAND SURVEY CORNER CERTIFICATE OF

LAND SURVEY MONUMENTS SITUATED IN SECTION 31, TOWNSHIP 86 NORTH, RANGE 2 EAST
OF THE FIFTH PRINCIPAL MERIDIAN, JACKSON COUNTY, IOWA.

PREVIOUSLY RECORDED NONE

(book, page, document number, etc.)

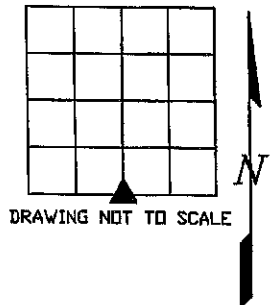
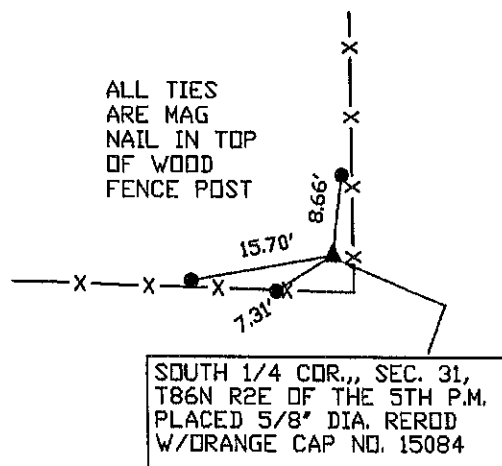
(Show reason for preparing this certificate, the evidence and detailed procedures used in establishing the corner positions and monumentation found or placed.)

Monument Description and Remarks:

-SOUTH 1/4 COR., SEC. 31, T86N R2E OF THE 5TH P.M. PLACED 5/8" DIA. REROD W/ORANGE CAP NO. 15084. ESTABLISHED CORNER AT THE INTERSECTION OF THE SOUTH LINE OF SAID SECTION 31 WITH A OCCUPATION FENCE LINE RUNNING NORTH ON THE EAST LINE OF THE SW-SE OF SAID SECTION 31

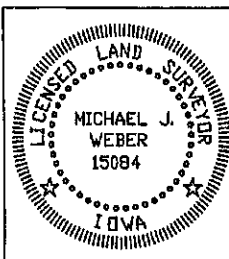
(Show a minimum of three reference ties to durable physical objects, relevant monuments and physical conditions that will enable recovery of the corner.)

PLAN - VIEW



DRAWING NOT TO SCALE

DWG. 21143-SEC-COR-CERT



I HEREBY CERTIFY THAT THIS LAND SURVEYING DOCUMENT WAS
PREPARED AND THE RELATED SURVEY WORK WAS PERFORMED BY ME OR
UNDER MY DIRECT PERSONAL SUPERVISION AND THAT I AM A DULY
LICENSED LAND SURVEYOR UNDER THE LAWS OF THE STATE OF IOWA.

Michael J. Weber November 25, 2024
MICHAEL J. WEBER (DATE)

LICENSE NUMBER 15084

MY LICENSE RENEWAL DATE IS DECEMBER 31, 2025

SHEETS COVERED BY THIS SEAL: THIS SHEET

List Corners to be Indexed
Corner Sec Twp Range

SOUTH 1/4 COR., 31-86N-2E