

UNITED STATES PUBLIC SECTION  
CORNER CERTIFICATION  
AND  
LAND CORNER SURVEY  
SECTION 24 T-86-N R-2-E  
MADE FOR

IOWA DEPARTMENT OF TRANSPORTATION FOR  
THE PURPOSE OF RIGHT OF WAY DESCRIPTIONS  
ON PRIMARY ROAD No. U.S. 61.

PAGE 1 OF 1

MADE BY

DENNIS R. PRANGE R.L.S. No. 10040  
JACKSON COUNTY, IOWA F-61-7(37)--20-49  
JANUARY 1992 THRU DECEMBER 1992

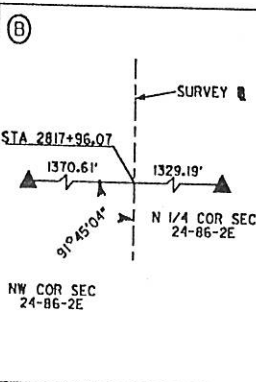
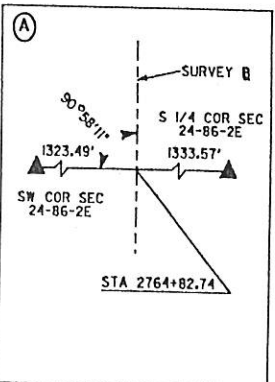
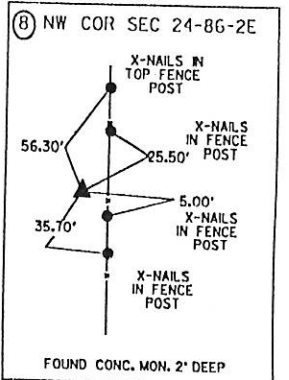
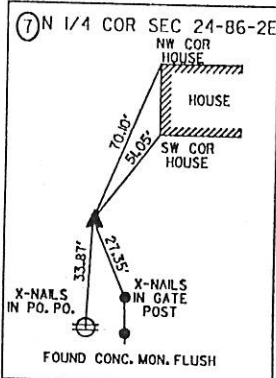
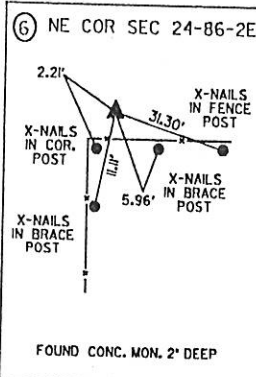
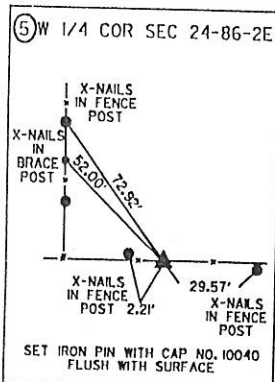
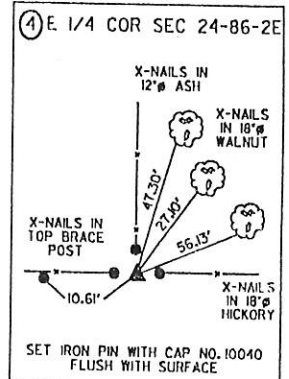
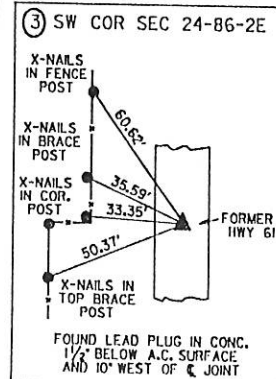
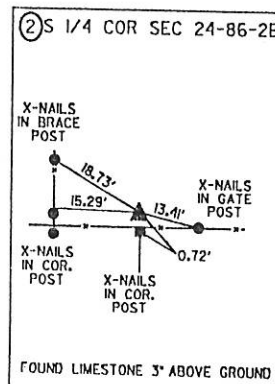
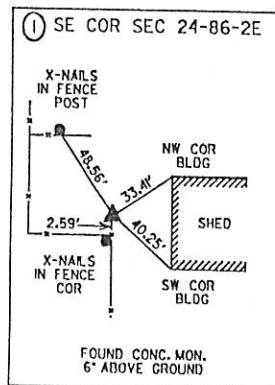
ALL DISTANCES WERE CAREFULLY MEASURED AND MAY NOT AGREE WITH  
ROAD SURVEY STATIONING.

I HEREBY CERTIFY THAT THIS LAND SURVEYING DOCUMENT WAS PREPARED BY ME  
OR UNDER MY DIRECT PERSONAL SUPERVISION AND THAT I AM A DULY  
REGISTERED LAND SURVEYOR UNDER THE LAWS OF THE STATE OF IOWA.

SIGNATURE: *Dennis R. Prange*  
NAME: DENNIS R. PRANGE, L.S.

DATE 2/11/1993 REG. NO. 10040  
MY REGISTRATION EXPIRES DECEMBER 31, 1994

BRICE, PETRIDES  
**SEC DONOHUE**  
ENVIRONMENT & INFRASTRUCTURE



FILE NO. 2298  
BOOK 1 PAGE 108

1993 FEB 17 AM 9:40

SHIRLY RATHENOUR  
JACKSON COUNTY, IOWA  
RECORDER

*See 5.00*

FILE NO. 03-5027  
BOOK 2 PAGE 182

03 AUG 27 AM 7:39

PHYLLIS M. GERLACH  
JACKSON COUNTY, IOWA  
RECORDER

Prepared by Wm. Burger Land Surveyors

510 3rd Street West Court, Worthington, Iowa

Phone 563 - 855 2028

Fee \$11.00

### UNITED STATES PUBLIC LAND SURVEY CORNER CERTIFICATE

Land Survey Monuments situated in Section 24, Township 86N, Range 2E, of the Fifth Principal Meridian, Jackson County, Iowa. Previously recorded in N/A in the Office of the County Recorder

Monument Description and Remarks: (No Corner Certificates Found at the County Recorders Office)

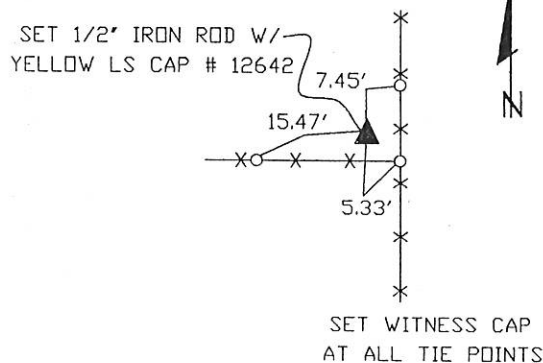
NW CORNER SE1/4 NE1/4 - SET 1/2" IRON ROD W/YELLOW LS CAP #12642 - RUN STRAIGHT LINES FROM OPPOSITE 1/4 1/4 CORNERS AND SET AT POINT OF INTERSECTION

SW CORNER SE1/4 NE1/4 - SET 1/2" IRON ROD W/YELLOW LS CAP #12642 - SET ON LINE AND MIDWAY BETWEEN THE CENTER OF SECTION AND THE E1/4 CORNER

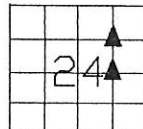
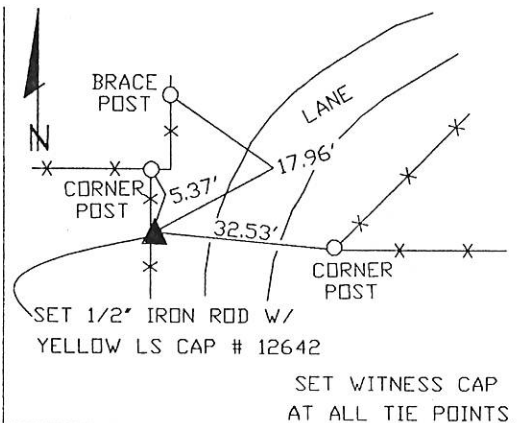
NOTE: METAL DETECTED BOTH AREAS AND NOTHING WAS FOUND, THERE WAS NO RECORD OF ANYTHING EVER BEING SET AT THE CORNERS

#### PLAN VIEW

NW CORNER SE1/4 NE1/4



SW CORNER SE1/4 NE1/4



SEAL

SEC. 24 TWP. 86N RANGE 2E

I hereby certify that this land surveying document was prepared and related survey work was performed by me or under my direct personal supervision and that I am a duly licensed Land Surveyor under the laws of the State of Iowa.

William H. Burger 8/25/03  
Date

William H. Burger

License number 12642

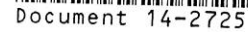
My license renewal date is December 31, 2004

Pages or Sheets covered by this seal: Sheet 1 of 1

#### CORNERS TO BE INDEXED

NW CORNER SE1/4 NE1/4 24 86N 2E

SW CORNER SE1/4 NE1/4 24 86N 2E

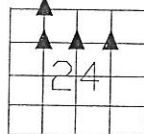


ARLENE SCHAUF, RECORDER/REGISTRAR  
JACKSON COUNTY IOWA

UNITED STATES PUBLIC LAND SURVEY CORNER CERTIFICATE

Monument Description and Remarks: (No Corner Certificates found at the County Recorders Office)

NW CORNER NE1/4 NW1/4 *PLAN VIEW* SW CORNER NE1/4 NW1/4



CORNERS TO BE INDEXED

The seal is circular with a double-lined border. The outer border contains the text "LICENSED LAND SURVEYOR" at the top and "IOWA" at the bottom, separated by two five-pointed stars. The inner circle contains the name "WILLIAM H. BURGER" and the number "12642".

Pages or Sheets covered by this seal: Sheet 1 of 1



Document 14-2726

Book 3 Page 144 Type 15 001 Pages 1  
Date 8/07/2014 Time 2:29 PM  
Rec Amt \$7.00

ARLENE SCHAUF, RECORDER/REGISTRAR  
JACKSON COUNTY IOWA

Prepared by Wm. Burger LandSurveyor 510 3rd Street West Court, Worthington, Iowa 52078 Phone 563 - 855 2028

### UNITED STATES PUBLIC LAND SURVEY CORNER CERTIFICATE

Land Survey Monuments situated in Section 24, Township 86N, Range 2E, of the Fifth Principal Meridian, Jackson County, Iowa. Previously recorded in SEE NOTE in the Office of the County Recorder

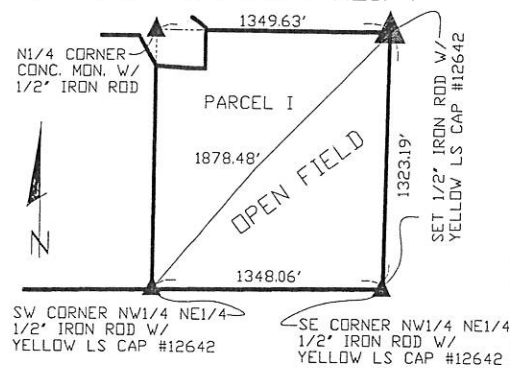
Monument Description and Remarks: (No Corner Certificates found at the County Recorders Office)

NE CORNER NW1/4 NE1/4 - SET 1/2" IRON ROD W/ YELLOW LS CAP #12642 - SET ON LINE AND MIDWAY BETWEEN THE N1/4 CORNER AND THE NE CORNER

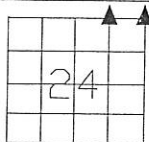
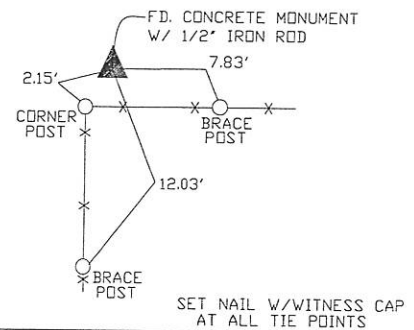
NE CORNER - FD. CONCRETE MONUMENT W/ 1/2" IRON ROD

NOTE: NE CORNER WAS PREVIOUSLY RECORDED IN BOOK 1, PAGE 108

#### NE CORNER NW1/4 NE1/4 PLAN VIEW



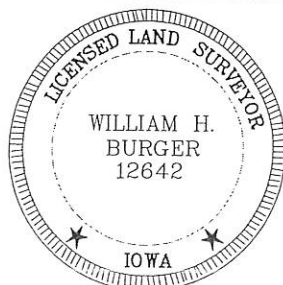
#### NE CORNER



SEC. 24 TWP. 86N RANGE 2E

#### CORNERS TO BE INDEXED

NE CORNER NW1/4 NE1/4	24	86N	2E
NE CORNER	24	86N	2E



I hereby certify that this land surveying document was prepared and related survey work was performed by me or under my direct personal supervision and that I am a duly licensed Land Surveyor under the laws of the State of Iowa.

*William H. Burger* 7/9/14  
William H. Burger Date  
License number 12642

My license renewal date is December 31, 2014  
Pages or Sheets covered by this seal: Sheet 1 of 1