

## UNITED STATES PUBLIC LAND SURVEY CORNER CERTIFICATE OF

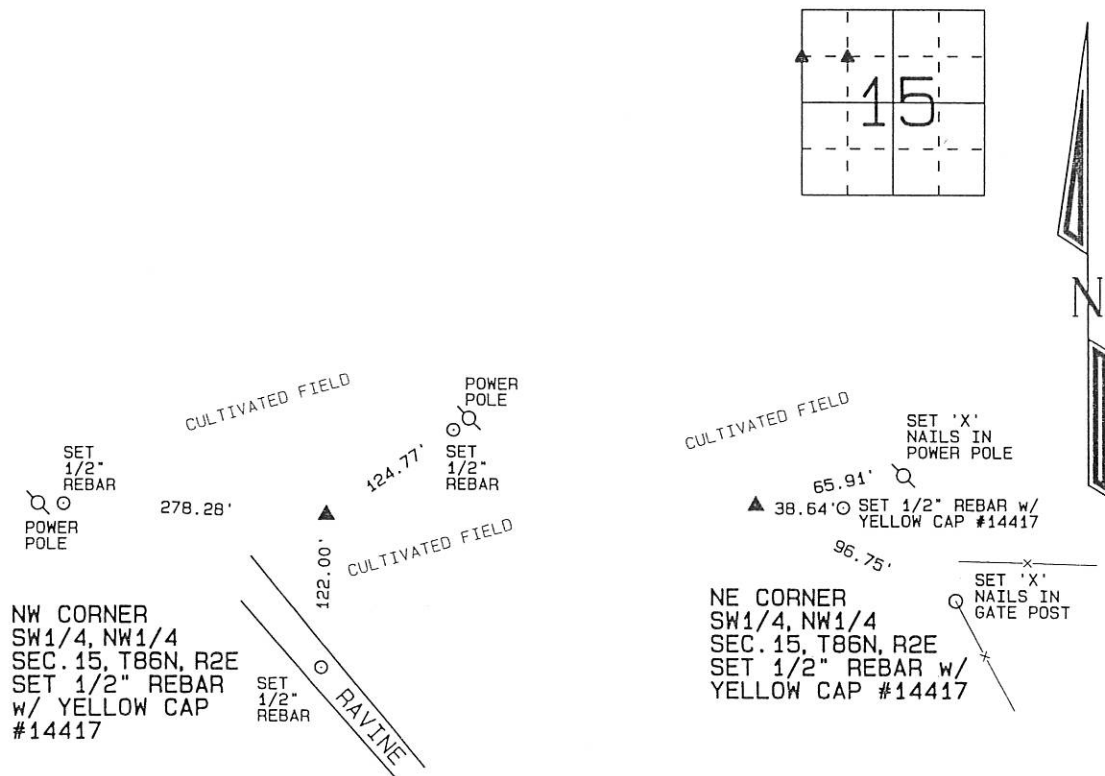
Land Survey Monuments situated in Section 15, Township 86 North, Range 2 East of the Fifth Principal Meridian, Jackson County, Iowa.  
Previously recorded \_\_\_\_\_  
(NONE OF RECORD)

(BOOK, PAGE / INST. NO. / CABINET, SLIDE)

Monument Description and Remarks: THE NW CORNER OF THE SW1/4 OF THE NW1/4 OF SEC. 15, T86N, R2E  
WAS ESTABLISHED AT THE MIDPOINT OF A LINE FROM THE NW CORNER OF THE W1/4 CORNER OF SAID SECTION 15.

THE NE CORNER OF THE SW1/4 OF THE NW1/4 OF SEC. 15, T86N, R2E WAS ESTABLISHED AT THE THEORETICAL CENTER OF THE  
NORTHWEST QUARTER OF SAID SECTION 15.

### PLAN - VIEW



I hereby certify that this land surveying document was prepared and the related survey work was performed by me or under my direct personal supervision and that I am a duly licensed Land Surveyor under the laws of the State of Iowa.

*David P. Schneider*  
David P. Schneider P.L.S. #14417 Date: 11/27/2015  
My license renewal date is December 31, 2019.  
Pages or sheets covered by this seal: THIS SHEET ONLY

**SCHNEIDER**  
Land Surveying & Planning, Inc.

P.O. Box 128 Farley, Iowa 52046  
Ph. #563-744-3631 daves@yousq.net



#### List Corners to be Indexed

Corners	Section	Twp	Range
NW CORNER SW1/4, NW1/4	15	86N	2E
NE CORNER SW1/4, NW1/4	15	86N	2E

JOB NO. 2079