

UNITED STATES PUBLIC LAND SURVEY CORNER CERTIFICATE OF

LAND SURVEY MONUMENTS SITUATED IN SECTION 7, TOWNSHIP 84 NORTH, RANGE 1 EAST
OF THE FIFTH PRINCIPAL MERIDIAN, JACKSON COUNTY, IOWA.
PREVIOUSLY RECORDED IN _____ IN COUNTY RECORDER'S OFFICE.

(Show reason for preparing this certificate, the evidence and detailed procedures used in establishing the corner positions and monumentation found or placed.)

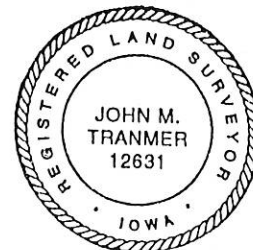
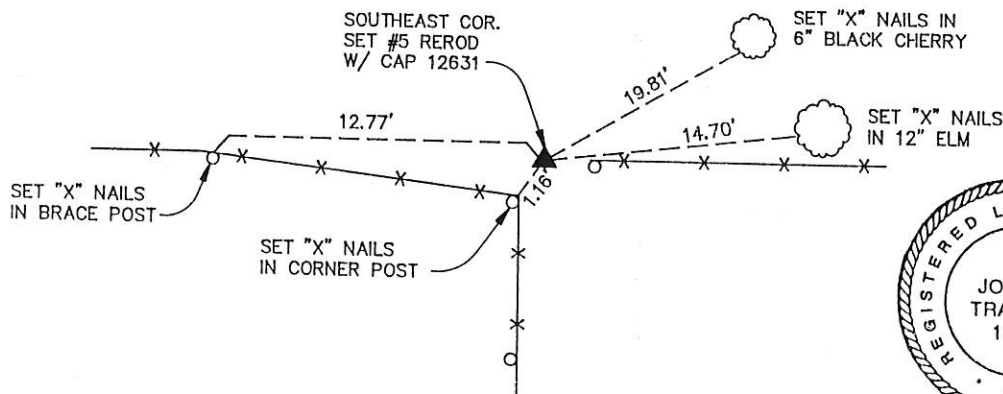
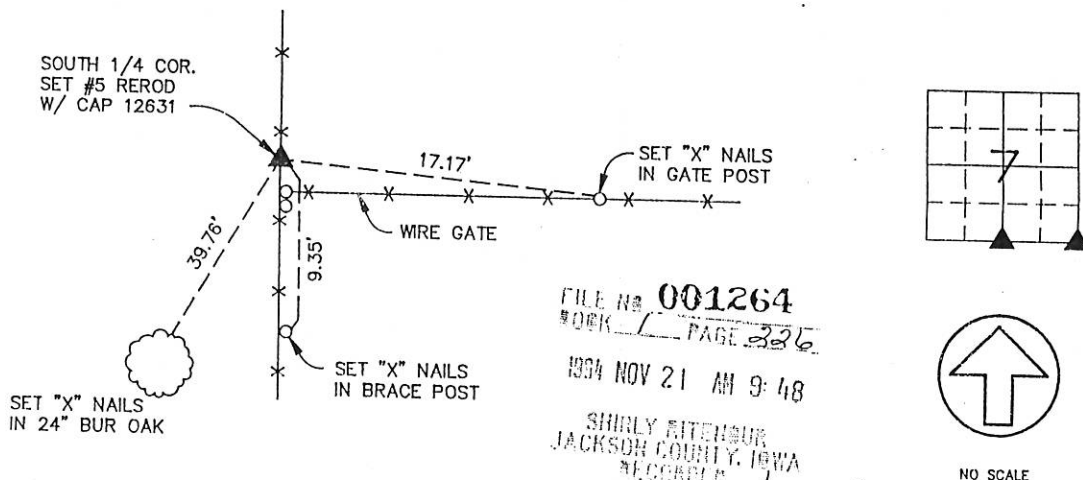
Monument Description and Remarks: _____

SOUTH QUARTER CORNER, SECTION 7 - SET #5 REROD CAP #12631

SOUTHEAST QUARTER CORNER, SECTION 7 - SET #5 REROD CAP #12631

PLAN - VIEW

(Show a minimum of three reference ties to durable physical objects, relevant monuments and physical conditions that will enable recovery of the corner.)



I HEREBY CERTIFY THAT THE SURVEY WORK WAS COMPLETED AND THIS CERTIFICATE WAS PREPARED BY ME OR UNDER MY DIRECT PERSONAL SUPERVISION AND THAT I AM A DULY REGISTERED LAND SURVEYOR UNDER THE LAWS OF THE STATE OF IOWA.

JOHN M. TRANMER REG. NO. 12631

DATE: 10/17/94
MY REGISTRATION EXPIRES DECEMBER 31, 1994

LIST CORNERS TO BE INDEXED

CORNERS	SECTION	TWP	RANGE
S 1/4	7	T84N	R1E
SE	7	T84N	R1E



**ENGINEERS AND
SURVEYORS P.C.**

Iowa, Illinois, Wisconsin

4155 Pennsylvania Ave.
Dubuque, Ia. 52002
(319) 556-2464

Guttenberg, IA
Galena, IL
Cuba City, WI

MONUMENT RECORD

COUNTY: JACKSON
TOWNSHIP: MONMOUTH

DATE: 10/14/94

REVISED:

FIELD BOOK NO. 345

PROJ. NO. 947174

INDEX NO.



Document 07-3666

Book 2 Page 582 Type 15 001 Pages 1

Date 8/15/2007 Time 12:33 PM

Rec Amt \$7.00

ARLENE SCHAUF, RECORDER
JACKSON COUNTY IOWA

PREPARED BY: MICHAEL J. WEBER, WEBER SURVEYING, LLC, 26789 46TH AVE, BERNARD, IA 52032 (563) 879-4173

UNITED STATES PUBLIC LAND SURVEY CORNER CERTIFICATE OF

LAND SURVEY MONUMENTS SITUATED IN SECTION 7, TOWNSHIP 84 NORTH, RANGE 1 EAST
OF THE FIFTH PRINCIPAL MERIDIAN, JACKSON COUNTY, IOWA.
PREVIOUSLY RECORDED NONE UNLESS OTHERWISE NOTED

(book, page, document number, etc.)

(Show reason for preparing this certificate, the evidence and detailed procedures used in establishing the corner positions and monumentation found or placed.)

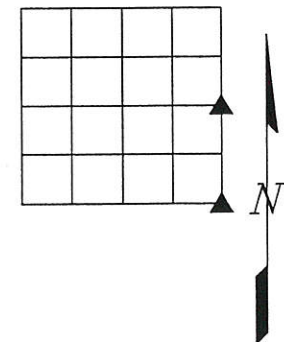
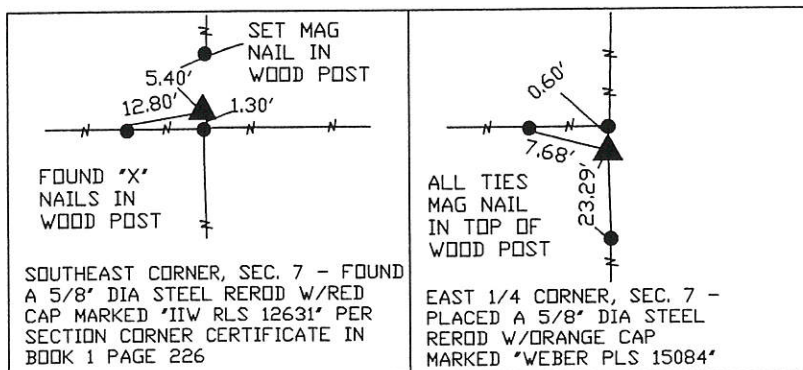
Monument Description and Remarks:

-EAST 1/4 CORNER - PLACED A 5/8" DIA STEEL REROD W/ORANGE CAP MARKED "WEBER PLS 15084",
ESTABLISHED CORNER USING EXISTING FENCELINE EVIDENCE AND PLAT IN BOOK 1-H PAGE 129
-SOUTHEAST 1/4 CORNER, SEC. 34 FOUND A 5/8" DIA STEEL REROD W/RED CAP MARKED "IIW RLS
12631" PER SECTION CORNER CERTIFICATE IN BOOK 1 PAGE 226, ESTABLISHED NEW TIES

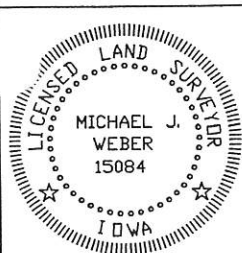
Sec. 7

(Show a minimum of three reference ties to durable physical objects, relevant monuments and physical conditions that will enable recovery of the corner.)

PLAN - VIEW



DWG. NO. BANDY-3



I HEREBY CERTIFY THAT THIS LAND SURVEYING DOCUMENT WAS PREPARED AND THE RELATED SURVEY WORK WAS PERFORMED BY ME OR UNDER MY DIRECT PERSONAL SUPERVISION AND THAT I AM A DULY LICENSED LAND SURVEYOR UNDER THE LAWS OF THE STATE OF IOWA.

Michael J. Weber July 16, 2007
MICHAEL J. WEBER (DATE)

LICENSE NUMBER 15084

MY LICENSE RENEWAL DATE IS DECEMBER 31, 2007

SHEETS COVERED BY THIS SEAL : THIS SHEET ONLY

List Corners to be Indexed

Corner	Sec	Twp	Range
EAST 1/4 COR	7	84N	1E
SE Cor.	7	84N	1E



Document 14-260

Book 3 Page 124 Type 15 001 Pages 1

Date 1/21/2014 Time 10:21 AM

Rec Amt \$7.00

ARLENE SCHAUF, RECORDER/REGISTRAR
JACKSON COUNTY IOWA

PREPARED BY: MICHAEL J. WEBER, WEBER SURVEYING, LLC, 26789 46TH AVE, BERNARD, IA 52032 (563) 879-4173

UNITED STATES PUBLIC LAND SURVEY CORNER CERTIFICATE OF

LAND SURVEY MONUMENTS SITUATED IN SECTION 7, TOWNSHIP 84 NORTH, RANGE 1 EAST
OF THE FIFTH PRINCIPAL MERIDIAN, JACKSON COUNTY, IOWA.

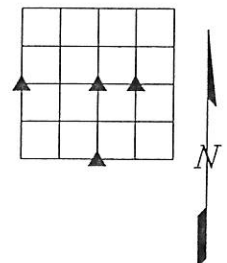
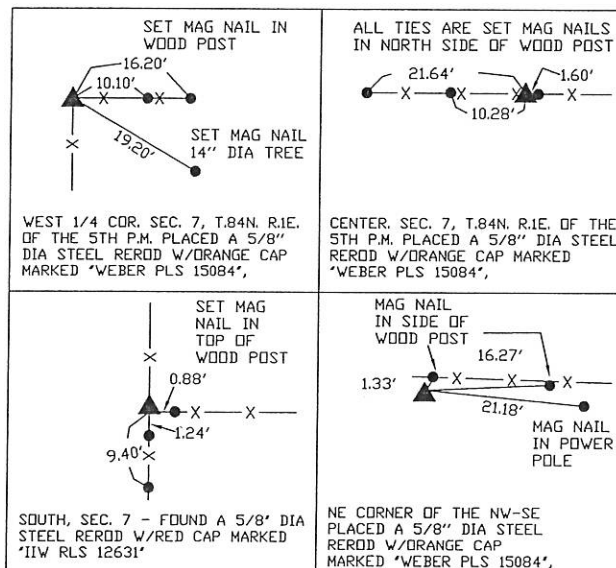
PREVIOUSLY RECORDED NONE UNLESS OTHERWISE NOTED

(book, page, document number, etc.)

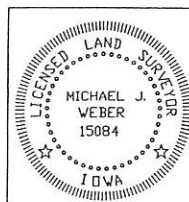
Monument Description and Remarks:

-WEST 1/4 CORNER - PLACED A 5/8" DIA STEEL REROD W/ORANGE CAP MARKED 'WEBER PLS 15084',
ESTABLISHED CORNER USING EXISTING FENCELINE EVIDENCE RUNNING SOUTH AND EAST.
-SOUTH 1/4 CORNER - FOUND A 5/8" DIA STEEL REROD W/RED CAP MARKED 'IIW RLS 12631' PER
SECTION CORNER CERTIFICATE IN BOOK 1 PAGE 226, ESTABLISHED NEW TIES.
-CENTER - PLACED A 5/8" DIA STEEL REROD W/ORANGE CAP MARKED 'WEBER PLS 15084',
ESTABLISHED CORNER AT THE INTERSECTION OF AN EXISTING OCCUPATION FENCELINE RUNNING EAST
AND WEST WITH THE WEST LINE OF THE SE 1/4.
-NE CORNER OF THE NW-SE PLACED A 5/8" DIA STEEL REROD W/ORANGE CAP MARKED 'WEBER PLS
15084', ESTABLISHED CORNER MIDWAY BETWEEN THE CENTER AND EAST 1/4 CORNER AND INLINE
WITH THE EXISTING OCCUPATION FENCELINE RUNNING EAST AND WEST.

(Show a minimum of three reference ties to durable physical objects, relevant monuments and physical conditions that
will enable recovery of the corner.)



DWG. NO. 13\13048



I HEREBY CERTIFY THAT THIS LAND SURVEYING DOCUMENT WAS
PREPARED AND THE RELATED SURVEY WORK WAS PERFORMED BY ME OR
UNDER MY DIRECT PERSONAL SUPERVISION AND THAT I AM A DULY
LICENSED LAND SURVEYOR UNDER THE LAWS OF THE STATE OF IOWA.

Michael J. Weber (Signature)
MICHAEL J. WEBER (DATE) August 7, 2013

LICENSE NUMBER 15084

MY LICENSE RENEWAL DATE IS DECEMBER 31, 2013

SHEETS COVERED BY THIS SEAL: THIS SHEET ONLY

List Corners to be Indexed			
Corner	Sec	Twp	Range
WEST 1/4 COR.	7	84N	1E
SOUTH 1/4 COR.	7	84N	1E
CENTER	7	84N	1E
NE COR, NW-SE	7	84N	1E