



Document 10-5414

Book 2 Page 740 Type 15 001 Pages 1  
Date 12/28/2010 Time 9:04 AM  
Rec Amt \$9.00

ARLENE SCHAUF, RECORDER/REGISTRAR  
JACKSON COUNTY IOWA

Prepared by Wm. Burger Land Surveyor 510 3rd Street West Court, Worthington, Iowa Phone 563 - 855 2028

### UNITED STATES PUBLIC LAND SURVEY CORNER CERTIFICATE

Land Survey Monuments situated in Section 4, Township 84N, Range 1E, of the Fifth Principal Meridian Jackson County, Iowa. Previously recorded in N/A in the Office of the County Recorder

Monument Description and Remarks: (No Corner Certificates found at the County Recorders Office)

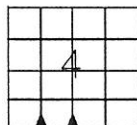
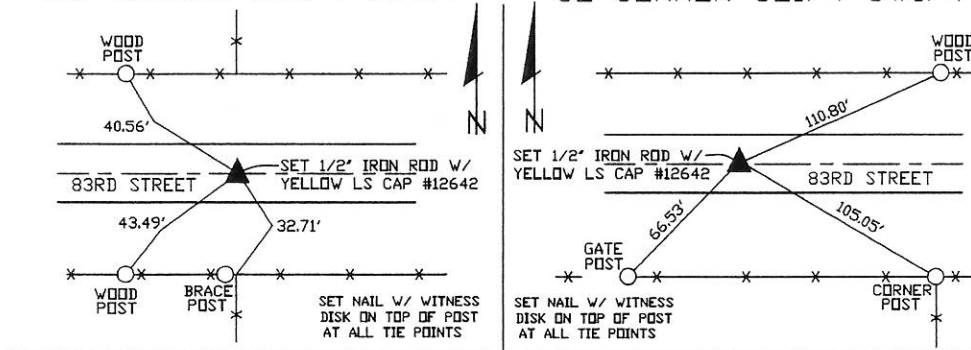
SW CORNER SE1/4 SW1/4 - SET 1/2" IRON ROD W/ YELLOW LS CAP #12642 - SET ON LINE BETWEEN THE SW CORNER AND THE S1/4 CORNER AND USED EXISTING FENCELINE EVIDENCE TO SET THIS CORNER

SE CORNER SE1/4 SW1/4 - SET 1/2" IRON ROD W/ YELLOW LS CAP #12642 - USED EXISTING FENCELINE EVIDENCE AND USED INFORMATION ON PLAT FOUND IN SUBDIVISION OF LANDS BOOK A, PAGE 17, LOCATED IN THE OFFICE OF THE JACKSON COUNTY RECORDER TO SET THIS CORNER

#### PLAN VIEW

SW CORNER SE1/4 SW1/4

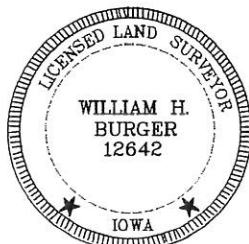
SE CORNER SE1/4 SW1/4



SEC. 4 TWP. 84N RANGE 1E

#### CORNERS TO BE INDEXED

SW CORNER SE1/4 SW1/4	4	84N	1E
SE CORNER SE1/4 SW1/4	4	84N	1E



I hereby certify that this land surveying document was prepared and related survey work was performed by me or under my direct personal supervision and that I am a duly licensed Land Surveyor under the laws of the State of Iowa.

William H. Burger 12/13/10  
William H. Burger Date

License number 12642

My license renewal date is December 31, 2010

Pages or Sheets covered by this seal: Sheet 1 of 1



Document 10-5415

Book 2 Page 741 Type 15 001 Pages 1  
Date 12/28/2010 Time 9:04 AM  
Rec Amt \$9.00

ARLENE SCHAUF, RECORDER/REGISTRAR  
JACKSON COUNTY IOWA

Prepared by *Wm. Burger Land Surveyor* 510 3rd Street West Court, Worthington, Iowa Phone 563 - 855 2028

# UNITED STATES PUBLIC LAND SURVEY CORNER CERTIFICATE

Land Survey Monuments situated in Section 4, Township 84N, Range 1E, of the Fifth Principal Meridian Jackson County, Iowa. Previously recorded in N/A in the Office of the County Recorder

Monument Description and Remarks: (No Corner Certificates found at the County Recorders Office)

NW CORNER SW1/4 NW1/4 - FOUND 1/2" IRON ROD W/ YELLOW LS CAP #2689

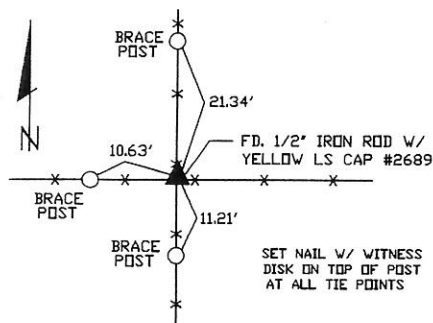
W1/4 CORNER - FOUND 1/2" IRON ROD WITH YELLOW LS CAP #2689

NE CORNER SW1/4 NW1/4 - SET 1/2" IRON ROD W/ YELLOW LS CAP #12642 - RUN STRAIGHT LINES FROM OPPOSITE 1/4 1/4 CORNERS AND SET AT POINT OF INTERSECTION

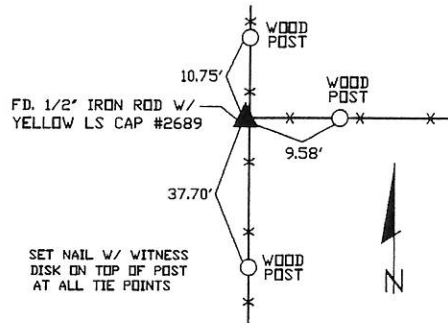
SE CORNER SW1/4 NW1/4 - SET 1/2" IRON ROD W/ YELLOW LS CAP #12642 - SET ON LINE AND MIDWAY BETWEEN THE W1/4 CORNER AND THE CENTER OF SECTION

## PLAN VIEW

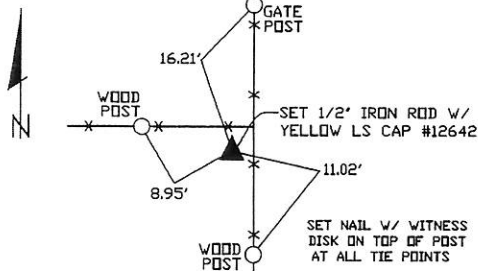
NW CORNER SW1/4 NW1/4



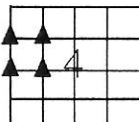
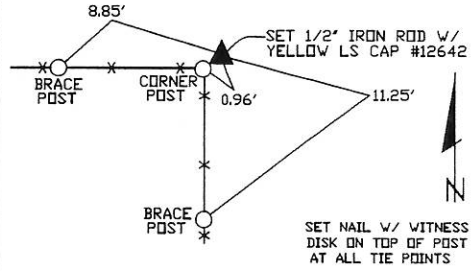
W1/4 CORNER



NE CORNER SW1/4 NW1/4



SE CORNER SW1/4 NW1/4



SEC. 4 TWP. 84N RANGE 1E

## CORNERS TO BE INDEXED

NW CORNER SW1/4 NW1/4	4	84N	1E
W1/4 CORNER	4	84N	1E
NE CORNER SW1/4 NW1/4	4	84N	1E
SE CORNER SW1/4 NW1/4	4	84N	1E



I hereby certify that this land surveying document was prepared and related survey work was performed by me or under my direct personal supervision and that I am a duly licensed Land Surveyor under the laws of the State of Iowa.

*William H. Burger* 12/13/10  
William H. Burger Date

License number 12642

My license renewal date is December 31, 2010

Pages or Sheets covered by this seal: Sheet 1 of 1