

FILE NO. **02-0965**  
BOOK 1 PAGE 560

02 FEB 26 AM 10:20

WYLLIS M. GERLACH  
JACKSON COUNTY, IOWA  
RECORDER

Prepared by Wm. Burger Land Surveyors

510 3rd Street West Court, Worthington, Iowa

Phone 319 - 855 2028

### UNITED STATES PUBLIC LAND SURVEY CORNER CERTIFICATE

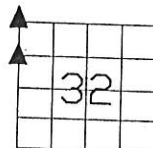
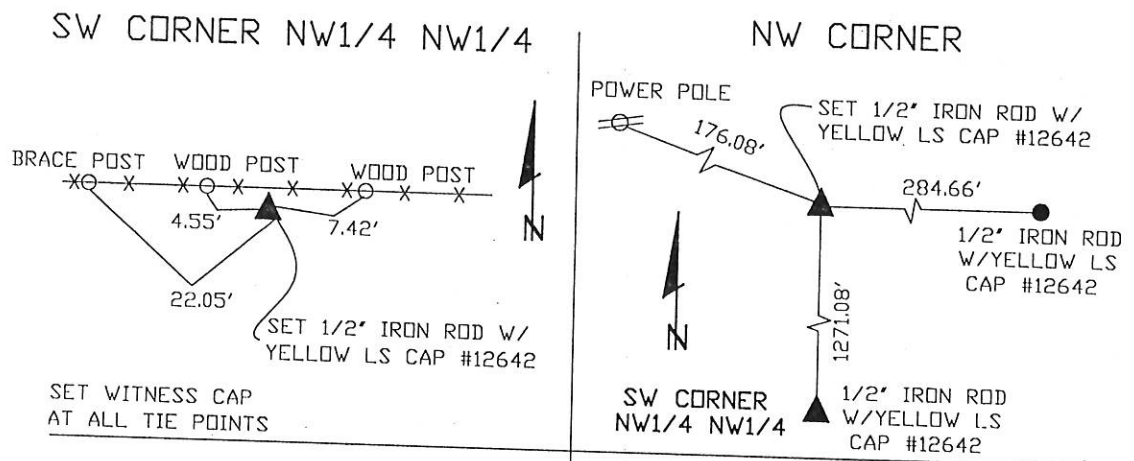
Land Survey Monuments situated in Section 32, Township 84N, Range 1E, of the Fifth Principal Meridian, Jackson County, Iowa. Previously recorded in N/A in the Office of the County Recorder

Monument Description and Remarks: (No Corner Certificates found at the County Recorder's Office)

NW CORNER - SET 1/2" IRON ROD W/YELLOW LS CAP #12642 - USED FENCELINE EVIDENCE OFF TO THE EAST TO ESTABLISH THIS CORNER

SW CORNER NW1/4 NW1/4 - SET 1/2" IRON ROD W/YELLOW LS CAP #12642 - DID AN EQUAL SPLIT BETWEEN THE NW CORNER AND THE W1/4 CORNER AND ADJUSTED CORNER TO FENCELINE

### PLAN VIEW



SEAL

SEC. 32 TWP. 84N RANGE 1E

I hereby certify that this land surveying document was prepared and related survey work was performed by me or under my direct personal supervision and that I am a duly licensed Land Surveyor under the laws of the State of Iowa.

William H. Burger 2/25/2002  
William H. Burger Date

License number 12642

My license renewal date is December 31, 2002

Pages or Sheets covered by this seal: Sheet 1 of 1

### CORNERS TO BE INDEXED

NW CORNER 32 84N 1E

SW CORNER NW1/4 NW1/4 32 84N 1E



Document 16-4167

Book 2016 Page 4167 Type 15 001 Pages 1  
Date 11/14/2016 Time 2:30 PM  
Rec Amt \$7.00

ARLENE SCHAUF, RECORDER/REGISTRAR  
JACKSON COUNTY IOWA

PREPARED BY: SCOTT SURVEY, INC. P.O. BOX 315 CENTER POINT IOWA 52213 319-540-5263

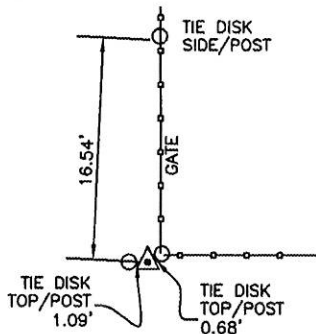
## U.S. PUBLIC LAND SURVEY CORNER CERTIFICATE

FOR LAND SURVEY MONUMENTS SITUATED IN SECTION 32, TOWNSHIP 84 NORTH, RANGE 1 EAST, OF  
THE FIFTH PRINCIPAL MERIDIAN, JACKSON COUNTY, IOWA

### REASON FOR PREPARING CERTIFICATE:

- ☒ A) THERE IS NO CERTIFICATE FOR THE CORNER ON FILE WITH THE RECORDER.  
☐ B) CORNER TIES DIFFER FROM PREVIOUSLY RECORDED CERTIFICATE.

### RECOVERY TIE DRAWING



S 1/4 CORNER  
SECTION 32, T84N, R1E  
SET 1/2" REBAR  
W/RED CAP NO. 13842

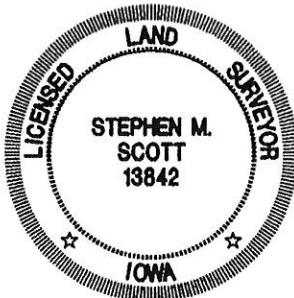


NOT TO SCALE

#### MONUMENT DESCRIPTION AND REMARKS :

SET MONUMENT ACCORDING TO THE SURVEY OF PARCEL  
"E" IN THE SW 1/4. SET AT THE POINT OF STONE  
WHICH WAS FOUND BETWEEN POSTS.

#### MONUMENT DESCRIPTION AND REMARKS :



I hereby certify that this land surveying document was prepared and  
the related survey work was performed by me or under my direct  
personal supervision and that I am a duly licensed Land Surveyor  
under the laws of the State of Iowa.

STEPHEN M. SCOTT, L.S.

Iowa Lic. No. 13842

My license renewal date is December 31, 2016.

*Oct. 14, 2016*  
*SMJ*

GOVERNMENT CORNER  
1/2" TIE PIN SET  
CENTERLINE  
EXISTING FENCE LINE  
R.O.W. LINE

### U.S. PUBLIC LAND SURVEY CORNER CERTIFICATE

SECTION 32, T84N, R1E  
S 1/4 CORNER

PROJECT NO.  
1666301