



Document 09-4348

Book 2 Page 687 Type 15 001 Pages 1

Date 11/10/2009 Time 11:15 AM

Rec Amt \$9.00

ARLENE SCHAUF, RECORDER/REGISTRAR  
JACKSON COUNTY IOWA

Prepared by Wm. Burger Land Surveyor

610 3rd Street West Court, Worthington, Iowa 52090

Phone 563 - 855 2028

## UNITED STATES PUBLIC LAND SURVEY CORNER CERTIFICATE

Land Survey Monuments situated in Section 31, Township 84N, Range 1E, of the Fifth Principal Meridian, Jackson County, Iowa. Previously recorded in SEE NOTE in the Office of the County Recorder

## Monument Description and Remarks:

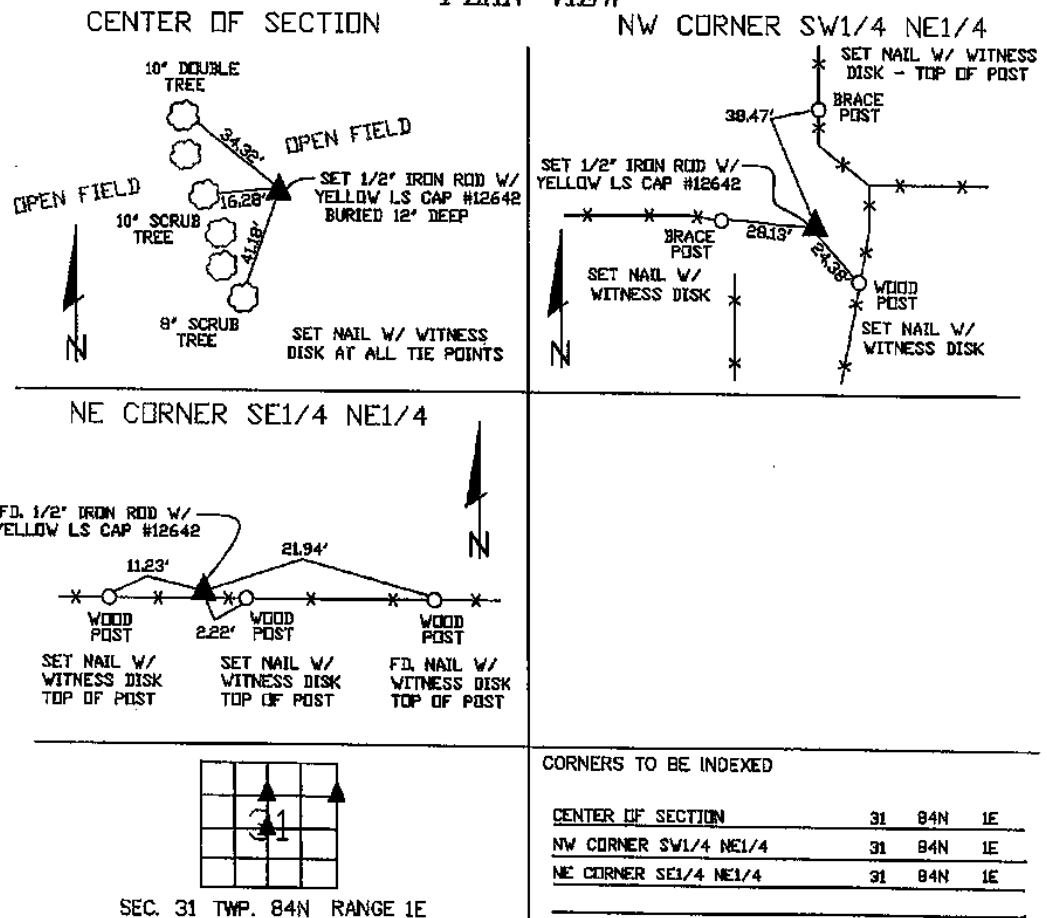
CENTER OF SECTION - SET 1/2" IRON ROD WITH YELLOW LS CAP #12642 - RUN STRAIGHT LINES FROM OPPOSITE 1/4 CORNERS AND SET AT THE POINT OF INTERSECTION

NW CORNER SW1/4 NE1/4 - SET 1/2" IRON ROD WITH YELLOW LS CAP #12642 - SET ON LINE AND MIDWAY BETWEEN THE CENTER OF SECTION AND THE NE1/4 CORNER

NE CORNER SE1/4 NE1/4 - FOUND 1/2" IRON ROD WITH YELLOW LS CAP #12642

NOTE: THE NE CORNER SE1/4 NE1/4 WAS PREVIOUSLY RECORDED IN THE OFFICE OF THE JACKSON COUNTY RECORDER IN BOOK 1, PAGE 560

## PLAN VIEW



I hereby certify that this land surveying document was prepared and related survey work was performed by me or under my direct personal supervision and that I am a duly licensed Land Surveyor under the laws of the State of Iowa.

William H. Burger 10/29/09  
Date

License number 12642

My license renewal date is December 31, 2010

Pages, or Sheets covered by this seal Sheet 1 of 1

Book 2 Page 687



Document 14-4407

Book 3 Page 156 Type 15 001 Pages 1  
Date 12/30/2014 Time 2:22 PM  
Rec Amt \$7.00

ARLENE SCHAUF, RECORDER/REGISTRAR  
JACKSON COUNTY IOWA

Prepared by Wm. Burger Land Surveyor

510 3rd Street West Court, Worthington, Iowa 52078

Phone 563 - 855 2028

### UNITED STATES PUBLIC LAND SURVEY CORNER CERTIFICATE

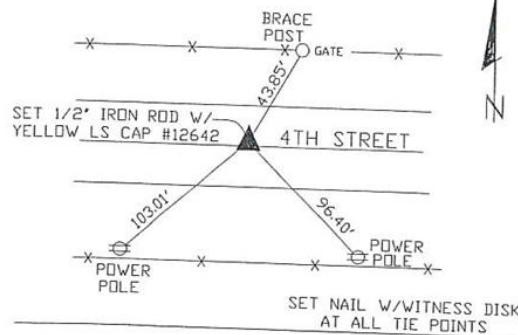
Land Survey Monuments situated in Section 31, Township 84N, Range 1E, of the Fifth Principal Meridian, Jackson County, Iowa. Previously recorded in N/A in the Office of the County Recorder

Monument Description and Remarks:

SW CORNER NW1/4 SE1/4 - SET 1/2" IRON ROD W/ YELLOW LS CAP #12642 - SET ON LINE AND MIDWAY BETWEEN THE S1/4 CORNER AND THE CENTER OF SECTION

SW CORNER NW1/4 SE1/4

PLAN VIEW



SEC. 31 TWP. 84N RANGE 1E

CORNERS TO BE INDEXED  
SW CORNER NW1/4 SE1/4  
NW CORNER NE1/4 NW1/4

31 84N 1E



I hereby certify that this land surveying document was prepared and related survey work was performed by me or under my direct personal supervision and that I am a duly licensed Land Surveyor under the laws of the State of Iowa.

*William H. Burger* 12/30/14  
William H. Burger Date  
License number 12642

My license renewal date is December 31, 2014  
Pages or Sheets covered by this seal: Sheet 1 of 1



Document 16-4163

Book 2016 Page 4163 Type 15 001 Pages 1

Date 11/14/2016 Time 2:27 PM

Rec Amt \$7.00

ARLENE SCHAUF, RECORDER/REGISTRAR  
JACKSON COUNTY IOWA

PREPARED BY: SCOTT SURVEY, INC. P.O. BOX 315 CENTER POINT IOWA 52213 319-540-5263

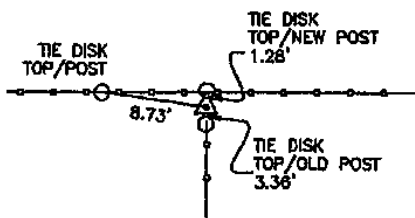
## U.S. PUBLIC LAND SURVEY CORNER CERTIFICATE

FOR LAND SURVEY MONUMENTS SITUATED IN SECTION 31, TOWNSHIP 84 NORTH, RANGE 1 EAST, OF  
THE FIFTH PRINCIPAL MERIDIAN, JACKSON COUNTY, IOWA

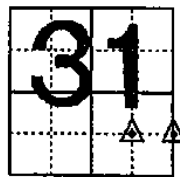
### REASON FOR PREPARING CERTIFICATE:

- ☒ A) THERE IS NO CERTIFICATE FOR THE CORNER ON FILE WITH THE RECORDER.  
☐ B) CORNER TIES DIFFER FROM PREVIOUSLY RECORDED CERTIFICATE.

### RECOVERY TIE DRAWING

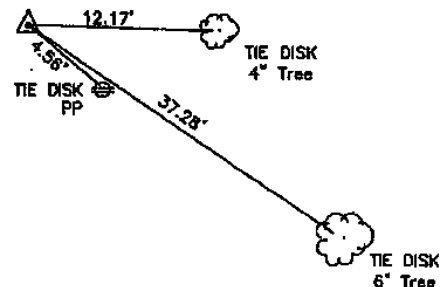


SW CORNER  
NE 1/4 SE 1/4  
SECTION 31, T84N, R1E  
SET 1/2" REBAR  
W/RED CAP NO. 13842



LOCATION

NOT TO SCALE



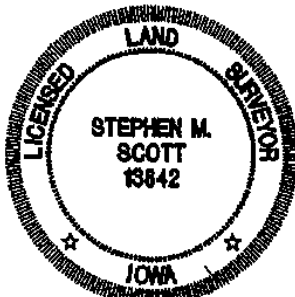
SE CORNER  
NE 1/4 SE 1/4  
SECTION 31, T84N, R1E  
SET 1/2" REBAR  
W/RED CAP NO. 13842

### MONUMENT DESCRIPTION AND REMARKS :

SET MONUMENT ACCORDING TO THE SURVEY OF PARCEL "E" IN THE E 1/2 NE 1/4 SE 1/4. SET AT POINT OF STONE AT POST, END OF OLD FENCE.

### MONUMENT DESCRIPTION AND REMARKS :

SET MONUMENT ACCORDING TO THE SURVEY OF PARCEL "E" IN THE E 1/2 NE 1/4 SE 1/4.



I hereby certify that this land surveying document was prepared and the related survey work was performed by me or under my direct personal supervision and that I am a duly licensed Land Surveyor under the laws of the State of Iowa.

STEPHEN M. SCOTT, L.S.

Iowa Lic. No. 13842

My license renewal date is December 31, 2016.

*act 11/4/2016*  
*SMS*

GOVERNMENT CORNER  
1/2" TIE PIN SET  
CENTERLINE  
EXISTING FENCE LINE  
R.O.W. LINE

### U.S. PUBLIC LAND SURVEY CORNER CERTIFICATE

SECTION 31, T84N, R1E  
SW CORNER NE 1/4 SE 1/4  
SE CORNER NE 1/4 SE 1/4

PROJECT NO.  
1666301



Document 16-4164

Book 2016 Page 4164 Type 15 001 Pages 1

Date 11/14/2016 Time 2:29 PM

Reo Amt \$7.00

ARLENE SCHAUF, RECORDER/REGISTRAR  
JACKSON COUNTY IOWA

PREPARED BY: SCOTT SURVEY, INC. P.O. BOX 315 CENTER POINT IOWA 52213 319-540-5263

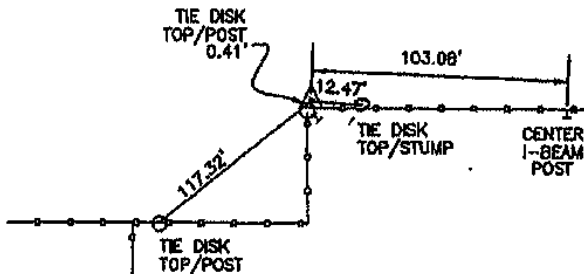
## U.S. PUBLIC LAND SURVEY CORNER CERTIFICATE

FOR LAND SURVEY MONUMENTS SITUATED IN SECTION 31, TOWNSHIP 84 NORTH, RANGE 1 EAST, OF  
THE FIFTH PRINCIPAL MERIDIAN, JACKSON COUNTY, IOWA

### REASON FOR PREPARING CERTIFICATE:

- ☒ A) THERE IS NO CERTIFICATE FOR THE CORNER ON FILE WITH THE RECORDER.  
☐ B) CORNER TIES DIFFER FROM PREVIOUSLY RECORDED CERTIFICATE.

### RECOVERY TIE DRAWING

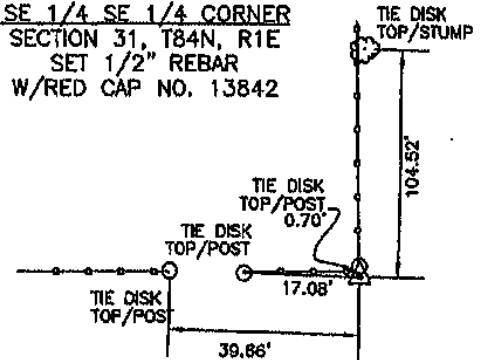


S 1/4 CORNER  
SECTION 31, T84N, R1E  
SET 1/2" REBAR  
W/RED CAP NO. 13842



NOT TO SCALE

SW CORNER  
SE 1/4 SE 1/4 CORNER  
SECTION 31, T84N, R1E  
SET 1/2" REBAR  
W/RED CAP NO. 13842

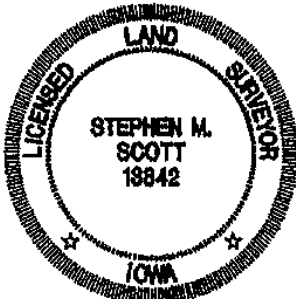


### MONUMENT DESCRIPTION AND REMARKS :

SET MONUMENT ACCORDING TO THE SURVEY OF PARCEL "E" IN THE E 1/2 NE 1/4 SE 1/4. SET AT LOCATION OF OLD CORNER POST (ACCORDING TO PROPERTY OWNER - NOW REPLACED WITH NEW POST). AREA OF POST IS VERY ROCKY, FOUND NOTHING UNUSUAL.

### MONUMENT DESCRIPTION AND REMARKS :

SET MONUMENT ACCORDING TO THE SURVEY OF PARCEL "E" IN THE E 1/2 NE 1/4 SE 1/4. SET AT LOCATION OF OLD FENCE CORNER. PROBED AREA FOR STONES AND FOUND NONE.



I hereby certify that this land surveying document was prepared and the related survey work was performed by me or under my direct personal supervision and that I am a duly licensed Land Surveyor under the laws of the State of Iowa.

STEPHEN M. SCOTT, L.S.

Iowa Lic. No. 13842

My license renewal date is December 31, 2016.

*Oct 14, 2016*  
*gms*

GOVERNMENT CORNER  
1/2" TIE PIN SET  
CENTERLINE  
EXISTING FENCE LINE  
R.O.W. LINE

### U.S. PUBLIC LAND SURVEY CORNER CERTIFICATE

SECTION 31, T84N, R1E  
S 1/4 CORNER  
SW CORNER, SE 1/4 SE 1/4

PROJECT NO.  
1666301



Document 16-4165

Book 2016 Page 4165 Type 15 001 Pages 1

Date 11/14/2016 Time 2:29 PM

Rec Amt \$7.00

ARLENE SCHAUF, RECORDER/REGISTRAR  
JACKSON COUNTY IOWA

PREPARED BY: SCOTT SURVEY, INC. P.O. BOX 315 CENTER POINT IOWA 52213 319-540-5263

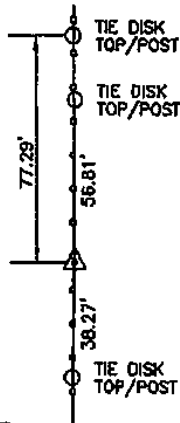
## U.S. PUBLIC LAND SURVEY CORNER CERTIFICATE

FOR LAND SURVEY MONUMENTS SITUATED IN SECTION 31, TOWNSHIP 84 NORTH, RANGE 1 EAST, OF  
THE FIFTH PRINCIPAL MERIDIAN, JACKSON COUNTY, IOWA

### REASON FOR PREPARING CERTIFICATE:

- ☒ A) THERE IS NO CERTIFICATE FOR THE CORNER ON FILE WITH THE RECORDER.  
☐ B) CORNER TIES DIFFER FROM PREVIOUSLY RECORDED CERTIFICATE.

### RECOVERY TIE DRAWING



E 1/4 CORNER  
SECTION 31, T84N, R1E  
SET 1/2" REBAR  
W/RED CAP NO. 13842

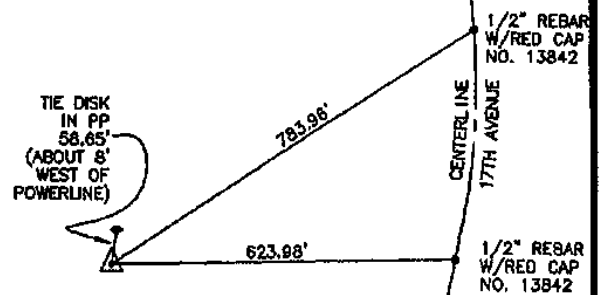


LOCATION

NOT TO SCALE

TIE DISK  
IN PP  
58.65'  
(ABOUT 8'  
WEST OF  
POWERLINE)

SE CORNER  
SECTION 31, T84N, R1E  
SET 1/2" REBAR  
W/RED CAP NO. 13842

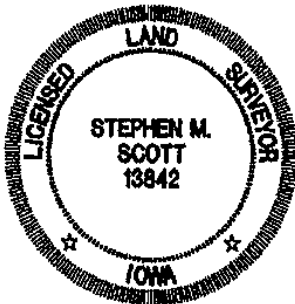


### MONUMENT DESCRIPTION AND REMARKS :

SET MONUMENT ACCORDING TO THE SURVEY OF PARCEL "E" IN THE E 1/2 NE 1/4 SE 1/4 AT THE MID POINT BETWEEN THE NE CORNER AND THE SE CORNER AND ON THE FENCE LINE AT THAT LOCATION. NO OTHER INDICATION OF CORNER AT THAT LOCATION.

### MONUMENT DESCRIPTION AND REMARKS :

SET MONUMENT ACCORDING TO THE SURVEY OF PARCEL "E" IN THE E 1/2 NE 1/4 SE 1/4. SET AT CALCULATED POINT BASED ON THE S 1/4 CORNER AND THE SW CORNER OF THE SE 1/4 SE 1/4, SEE SURVEY FOR DETAILS.



I hereby certify that this land surveying document was prepared and the related survey work was performed by me or under my direct personal supervision and that I am a duly licensed Land Surveyor under the laws of the State of Iowa.

STEPHEN M. SCOTT, L.S.

Iowa Lic. No. 13842

My license renewal date is December 31, 2016.

*Oct 14, 2016*  
*SM*

GOVERNMENT CORNER  
1/2" TIE PIN SET  
CENTERLINE  
EXISTING FENCE LINE  
R.O.W. LINE

### U.S. PUBLIC LAND SURVEY CORNER CERTIFICATE

SECTION 31, T84N, R1E  
E 1/4 CORNER  
SE CORNER

PROJECT NO.  
1666301



Document 19-3033

Type 15 001

Pages 1

Date 9/19/2019 Time 8:45 AM

Rec Amt \$7.00

ARLENE SCHAUF, RECORDER/REGISTRAR  
JACKSON COUNTY IOWA

PREPARED BY: MICHAEL J. WEBER, WEBER SURVEYING, LLC, 26789 46TH AVE, BERNARD, IA 52032 (563) 879-4173

## UNITED STATES PUBLIC LAND SURVEY CORNER CERTIFICATE OF

LAND SURVEY MONUMENTS SITUATED IN SECTION 31, TOWNSHIP 84 NORTH, RANGE 1 EAST  
OF THE FIFTH PRINCIPAL MERIDIAN, JACKSON COUNTY, IOWA.  
PREVIOUSLY RECORDED SEE NOTES BELOW

(book, page, document number, etc.)

(Show reason for preparing this certificate, the evidence and detailed procedures used in establishing the corner positions and monumentation found or placed.)

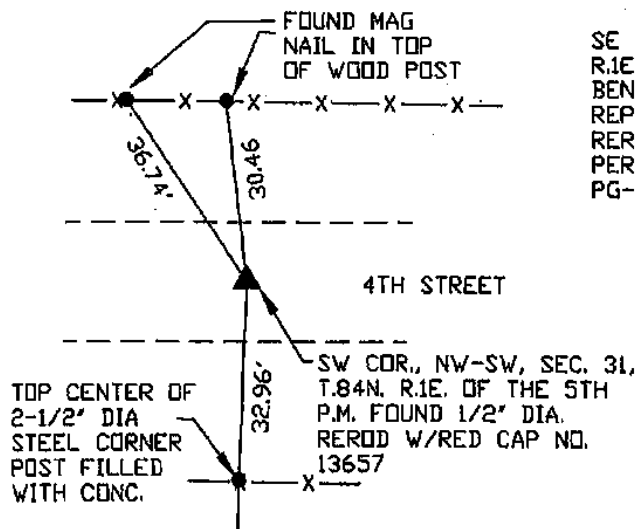
### Monument Description and Remarks:

-SW COR., NW-SW, SEC. 31, T.84N. R.1E. OF THE 5TH P.M. FOUND 1/2" DIA. REROD W/RED CAP NO. 13657. CORNER WAS SET AS SHOWN IN PLAT DOC. NO. 2016-1625 OF THE JONES COUNTY RECORDER'S OFFICE. NO CORNER CERTIFICATE ON FILE WITH JACKSON COUNTY RECORDER'S OFFICE.

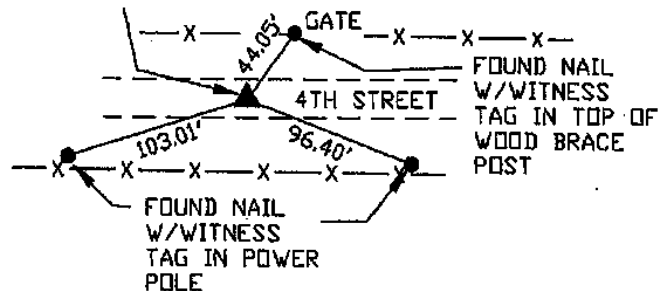
-SE COR. NE-SW, SEC. 31, T.84N. R.1E. OF THE 5TH P.M. FOUND BENT 1/2" DIA. REROD. REPLACED WITH A 5/8" DIA. REROD W/ORANGE CAP NO. 15084. CORNER WAS PREVIOUSLY RECORDED IN SEC. COR. CERT. BK-3 PG-156, DOC. NO. 14-4407 OF THE JACKSON COUNTY RECORDER'S OFFICE

(Show a minimum of three reference ties to durable physical objects, relevant monuments and physical conditions that will enable recovery of the corner.)

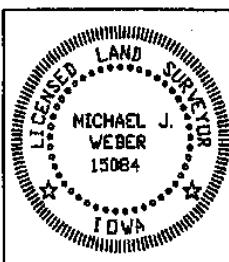
### PLAN - VIEW



SE COR. NE-SW, SEC. 31, T.84N. R.1E. OF THE 5TH P.M. FOUND BENT 1/2" DIA. REROD. REPLACED WITH A 5/8" DIA. REROD W/ORANGE CAP NO. 15084 PER SEC. COR. CERT. BK-3 PG-156, DOC. NO. 14-4407



DWG. NO. 19057-WOLFE



I HEREBY CERTIFY THAT THIS LAND SURVEYING DOCUMENT WAS PREPARED AND THE RELATED SURVEY WORK WAS PERFORMED BY ME OR UNDER MY DIRECT PERSONAL SUPERVISION AND THAT I AM A DULY LICENSED LAND SURVEYOR UNDER THE LAWS OF THE STATE OF IOWA.

*Michael J. Weber*  
MICHAEL J. WEBER  
LICENSE NUMBER 15084

MY LICENSE RENEWAL DATE IS DECEMBER 31, 2019

SHEETS COVERED BY THIS SEAL: THIS SHEET

List Corners to be Indexed  
Corner Sec Twp Range

SW COR, NW-SW 31 84N 1E  
SE COR, NE-SW 31 84N 1E