

UNITED STATES PUBLIC LAND SURVEY CORNER CERTIFICATE

OF

Land Survey Monuments situated in Section 27, Township 84 North, Range 1 East, of the Fifth Principal Meridian, Jackson County, Iowa.
 Previously recorded in Not Recorded in County Recorder's Office.

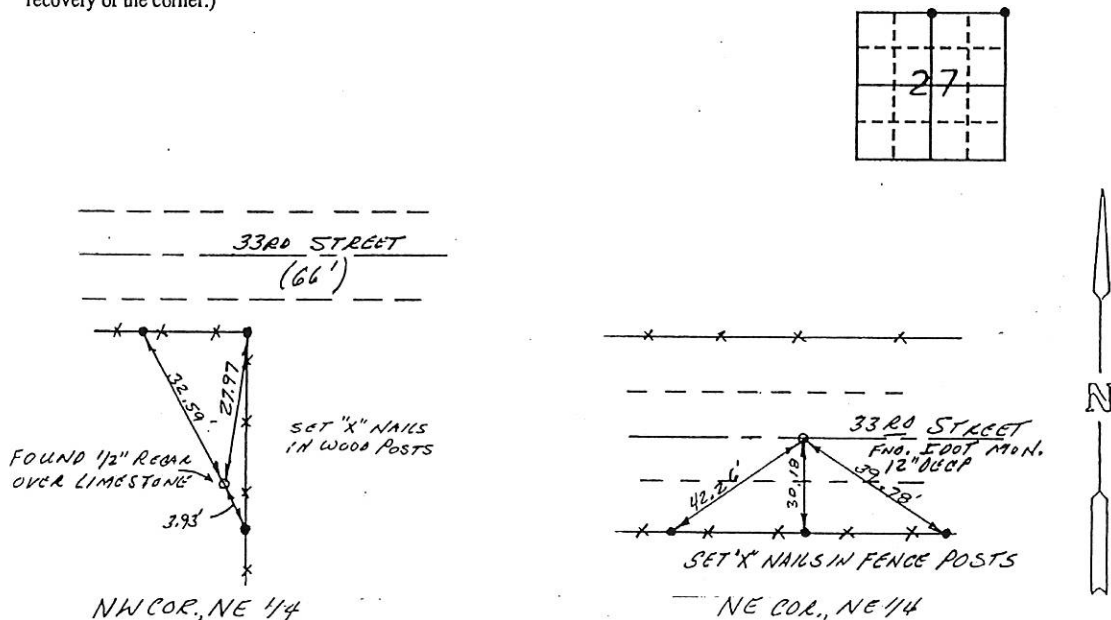
(book, page, document number, etc.)

(Show reason for preparing this certificate, the evidence and detailed procedures used in establishing the corner positions and monumentation found or placed.)

Monument Description and Remarks: These Section Corners were recovered with the assistance of monument ties found at the Jackson County Engineer's Office.

PLAN - VIEW

(Show a minimum of three reference ties to durable physical objects, relevant monuments and physical conditions that will enable recovery of the corner.)



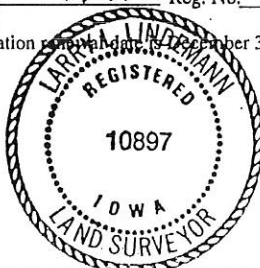
I hereby certify that the survey work was completed and this land surveying document was prepared by me or under my direct personal supervision and that I am a duly registered land surveyor under the laws of the state of Iowa

Signature: Larry L. Lindemann
 Name typed or printed: Larry L. Lindemann

Date: Oct. 29, 1996 Reg. No. 10897

My registration expires on or before 31, 1997

SEAL



Corners	Section	Twps	Range
NW Cor., NE 1/4	27	84 N.	1 E.
NE Cor., NE 1/4	27	84 N.	1 E.

FILE NO. 005129
 BOOK 1 PAGE 294

1996 NOV 14 AM 11:50

SHIRLY RITENOUR
 JACKSON COUNTY, IOWA
 RECORDER Fee 6.00

FILE NO. 00-0971

BOOK 1 PAGE 422

MAR 28 AM 10:46

PHYLLIS M. CERLACH
JACKSON COUNTY, IOWA

Prepared by: SCHNEIDER Land Surveying and Planning P.O. Box 105 Peosta, Iowa 52069 Ph#319-556-9055

UNITED STATES PUBLIC LAND SURVEY CORNER CERTIFICATE OFLand Survey Monuments situated in Section 27, Township 84 North, Range 1 East of the Fifth Principal Meridian, Jackson County, Iowa.
Previously recorded None of Record

(Show reason for preparing this certificate, the evidence and detailed procedures used in establishing the corner positions and monumentation found or placed.)

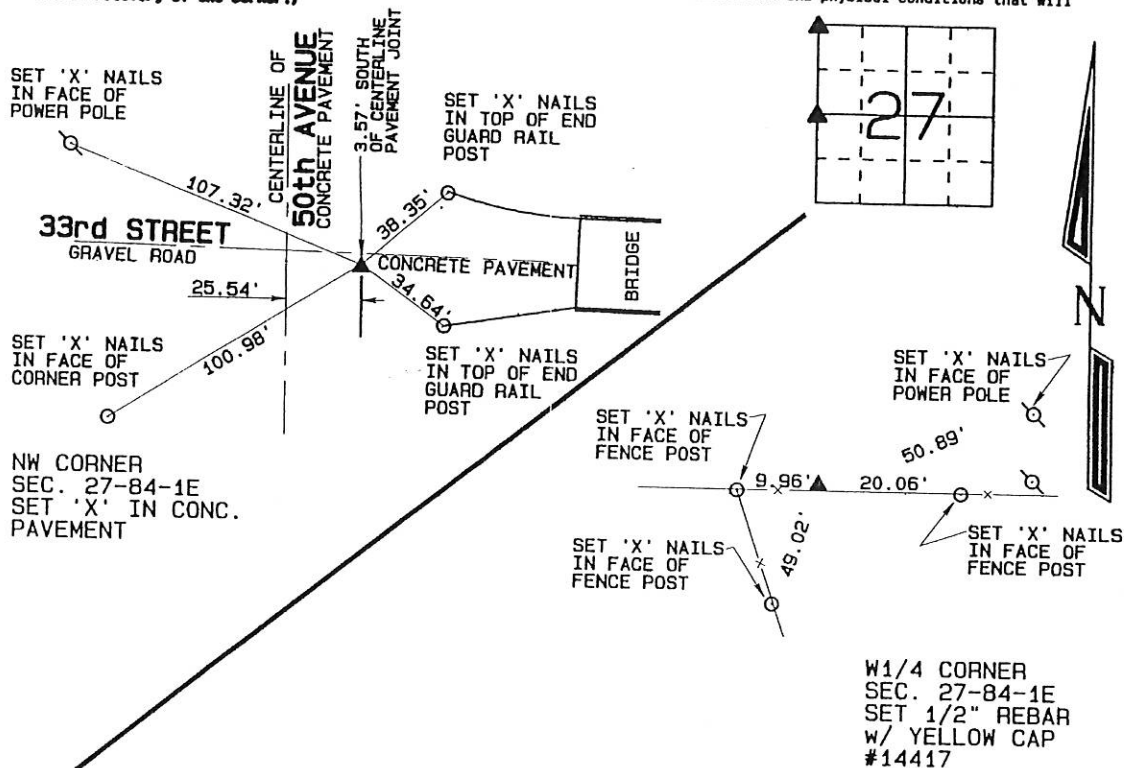
Monument Description and Remarks:

THE NW CORNER OF SECTION 27 WAS RE-ESTABLISHED USING A DISTANCE SPLIT BETWEEN THE W1/4 CORNER OF SECTION 27 AND THE W1/4 CORNER OF SECTION 22. THE EAST-WEST LOCATION WAS ESTABLISHED 198 FEET WEST OF THE WEST LINE OF THE ORIGINAL TOWN OF MILLROCK. COUNTY RIGHT OF WAY EASEMENT PLATS INDICATED THE CORNER TO BE 38.1' EAST OF THE CENTERLINE OF 50th AVENUE BUT THE ENGINEERS OFFICE DID NOT HAVE TIES TO THE LOCATION AND THE LOCATION DID NOT MATCH THE SUBDIVISION OF THE W1/2, NW1/4 OF SECTION 27, THE SUBDIVISION OF THE E1/2, NE1/4 OF SECTION 28 OR THE ORIGINAL TOWN OF MILLROCK.

NO MONUMENT WAS FOUND AT THE W1/4 CORNER OF SECTION 27. THE CORNER WAS RE-ESTABLISHED IN THE EAST-WEST OCCUPATION FENCE 7.61 CHAINS WEST OF THE INTERSECTION OF THE CENTERLINE OF JEFFERSON STREET IN THE ORIGINAL TOWN OF MILLROCK EXTENDED SOUTH AND THE SOUTH LINE OF THE W1/4, NW1/4 OF SECTION 27 AS FENCED AND OCCUPIED.

PLAN - VIEW

(Show a minimum of three reference ties to durable physical objects, relevant monuments and physical conditions that will enable recovery of the corner.)



I hereby certify that this land surveying document was prepared and the related survey work was performed by me or under my direct personal supervision and that I am a duly licensed Land Surveyor under the laws of the State of Iowa.

David P. Schneider P.L.S. #14417

Date

My license renewal date is December 31, 2001.

Pages or sheets covered by this seal: THIS SHEET ONLY

SEAL

**List Corners to be Indexed**

Corners	Section	Twp	Range
NW	27	84	1E
W1/4	27	84	1E

JOB NO. 00-0115

02 OCT -8 AM 7:59

PHYLLIS M. GERLACH
JACKSON COUNTY, IOWA
RECORDER

Prepared by: SCHNEIDER Land Surveying and Planning P.O. Box 105 Peosta, Iowa 52068 563-556-9055

UNITED STATES PUBLIC LAND SURVEY CORNER CERTIFICATE OF

Land Survey Monuments situated in Section 27, Township 84 North, Range 1 East of the Fifth Principal Meridian, Jackson County, Iowa.
Previously recorded NONE OF RECORD

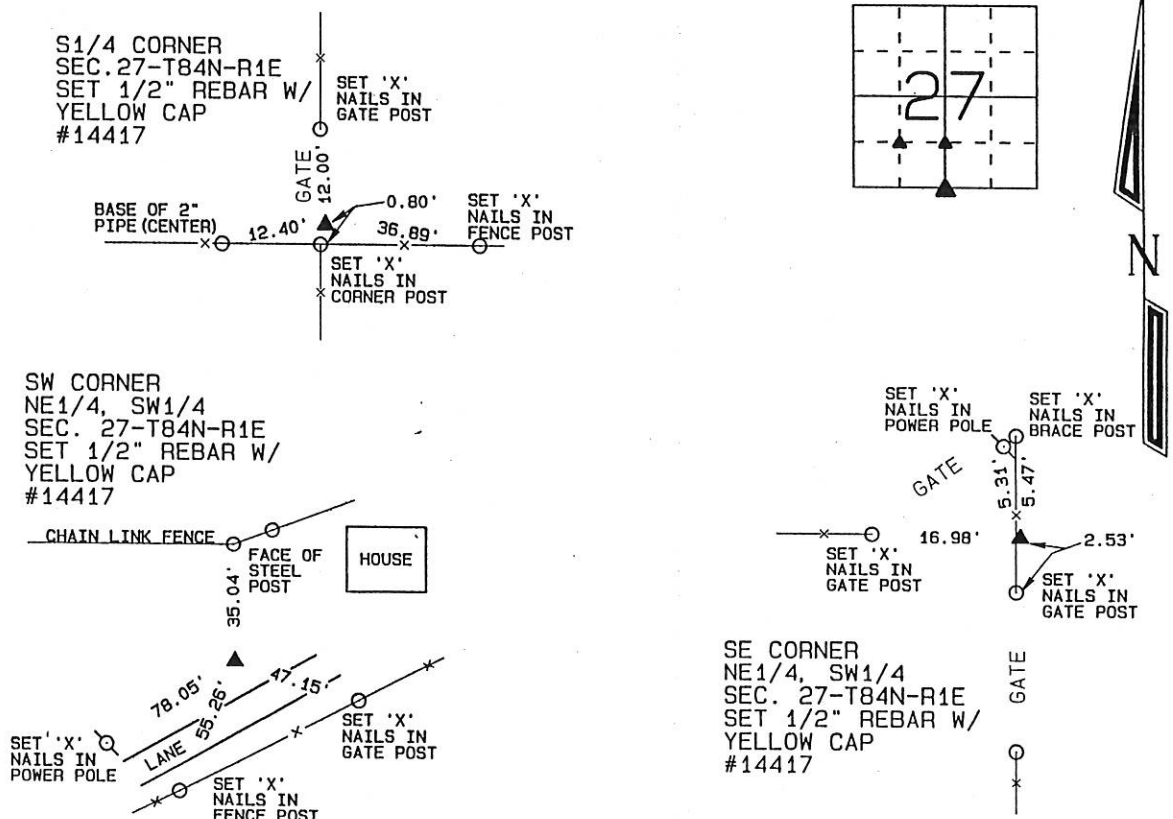
(Show reason for preparing this certificate, the evidence and detailed procedures used in establishing the corner positions and monumentation found or placed.)

Monument Description and Remarks: NO MONUMENT WAS FOUND AT THE S1/4 CORNER OF SEC. 27-T84N-R1E.

THE CORNER WAS ESTABLISHED AT THE INTERSECTION OF OCCUPATION FENCE LOCATED NORTH, SOUTH, EAST AND WEST OF THE CORNER. THE SE CORNER OF THE NE1/4 OF THE SW1/4 OF SEC. 27-T84N-R1E WAS ESTABLISHED ON A STRAIGHT LINE FROM THE N1/4 CORNER TO THE S1/4 CORNER AND IN LINE WITH A QUARTER-QUARTER LINE OCCUPATION FENCE WEST OF THE CORNER. THE SW CORNER OF THE NE1/4 OF THE SW1/4 OF SEC. 27-T84N-R1E WAS ESTABLISHED BY INTERSECTING THE OPPOSITE QUARTER-QUARTER CORNERS OF THE SOUTHWEST QUARTER OF SAID SECTION 27. THE OPPOSITE QUARTER-QUARTER CORNERS WERE ESTABLISHED BY SPLITTING THE QUARTER LINES BASED ON OCCUPATION EVIDENCE.

PLAN - VIEW

(Show a minimum of three reference ties to durable physical objects, relevant monuments and physical conditions that will enable recovery of the corner.)



I hereby certify that this land surveying document was prepared and the related survey work was performed by me or under my direct personal supervision and that I am a duly licensed Land Surveyor under the laws of the State of Iowa.

David P. Schneider 10/4/2002
David P. Schneider P.L.S. #14417 Date:
My license renewal date is December 31, 2003.

Pages or sheets covered by this seal: THIS SHEET ONLY

SCHNEIDER
Land Surveying & Planning
P.O. Box 105 Peosta, Iowa 52068
Ph. #563-556-9055 Fax #563-556-9054



List Corners to be Indexed

Corners	Section	Twp	Range
S1/4	27	84N	1E
SW CORNER NE1/4, SW1/4	27	84N	1E
SE CORNER NE1/4, SW1/4	27	84N	1E

JOB NO. 300



Document 06-3586

Book 2 Page 480 Type 15 001 Pages 1
Date 9/15/2006 Time 3:20 PM
Rec Amt \$7.00

ARLENE SCHAUF, RECORDER
JACKSON COUNTY IOWA

Prepared by: SCHNEIDER Land Surveying and Planning, Inc. P.O. Box 128 Farley, Iowa 52046 563-744-3631

UNITED STATES PUBLIC LAND SURVEY CORNER CERTIFICATE OF

Land Survey Monuments situated in Section 27, Township 84 North, Range 1 East
of the Fifth Principal Meridian, Jackson County, Iowa.
Previously recorded (NONE OF RECORD)

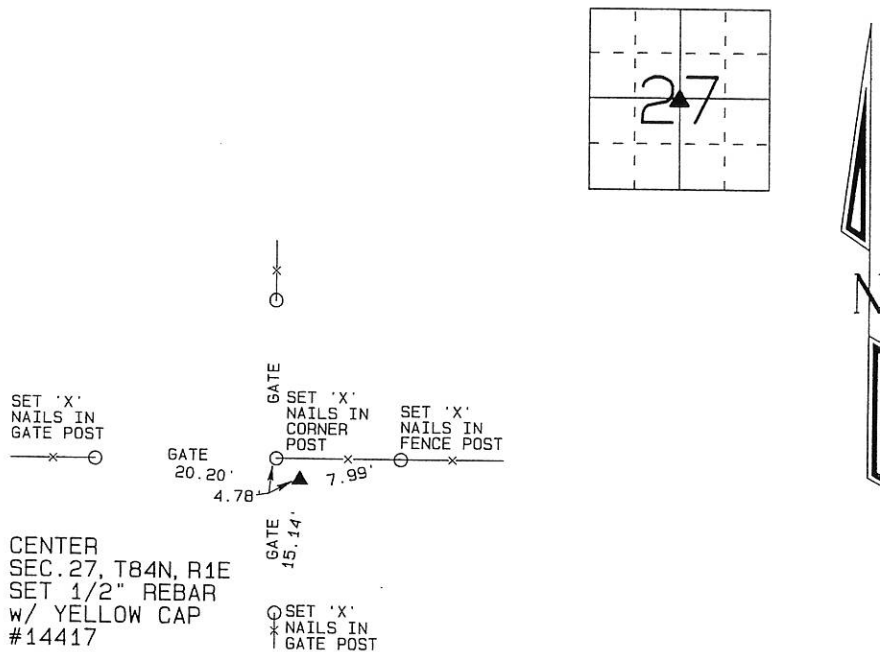
(Show reason for preparing this certificate, the evidence and detailed procedures used in establishing the corner positions and monumentation found or placed.)

Monument Description and Remarks:

THE CENTER OF SECTION 27, T84N, R1E WAS ESTABLISHED AT THE THEORETICAL CENTER OF SAID SECTION 27.

PLAN - VIEW

(Show a minimum of three reference ties to durable physical objects, relevant monuments and physical conditions that will enable recovery of the corner.)



I hereby certify that this land surveying document was prepared and the related survey work was performed by me or under my direct personal supervision and that I am a duly licensed Land Surveyor under the laws of the State of Iowa.

David P. Schneider P.L.S. #14417

Date: 8/13/2006

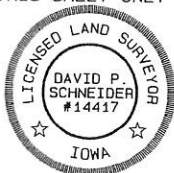
License renewal date is December 31, 2007.

or sheets covered by this seal: THIS SHEET ONLY

SCHNEIDER

Land Surveying & Planning, Inc.

P.O. Box 128 Farley, Iowa 52046
Ph. #563-744-3631 Fax #563-744-3629



List Corners to be Indexed

Corners	Section	Twp	Range
CENTER	27	84N	1E

Book 2 Page 480 JOB NO. 904



Document 07-3132

Book 2 Page 572 Type 15 001 Pages 1
Date 7/10/2007 Time 1:27 PM
Rec Amt \$7.00

ARLENE SCHAUF, RECORDER
JACKSON COUNTY IOWA

Prepared by: SCHNEIDER Land Surveying and Planning, Inc. P.O. Box 128 Farley, Iowa 52046 563-744-3631

UNITED STATES PUBLIC LAND SURVEY CORNER CERTIFICATE OF

Land Survey Monuments situated in Section 27, Township 84 North, Range 1 East
of the Fifth Principal Meridian, Jackson County, Iowa.

Previously recorded (NONE OF RECORD)

(BOOK, PAGE / INST. NO. / CABINET, SLIDE)

(Show reason for preparing this certificate, the evidence and detailed procedures used in establishing the corner positions and monumentation found or placed.)

Monument Description and Remarks:

THE SW CORNER OF THE SE1/4 OF THE SW1/4 OF SECTION 27, T84N, R1E WAS ESTABLISHED AT THE MIDPOINT OF A LINE FROM
THE SW CORNER TO THE S1/4 CORNER OF SAID SECTION 27.

PLAN - VIEW

(Show a minimum of three reference ties to durable physical objects, relevant monuments and physical conditions that will enable recovery of the corner.)

SW CORNER
SE1/4, SW1/4
SEC. 27, T84N, R1E
SET 1/2" REBAR w/
YELLOW CAP #14417

SET 'X'
NAILS IN
CORNER POST

44.55'

SET 'X'
NAILS IN
5" WALNUT

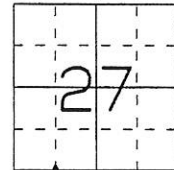
37.81'

53rd AVENUE

58.63'
57.45'

SET 60d
NAIL IN
CLIP OF
T-POST

SET 'X'
NAILS IN
CORNER POST

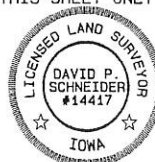


I hereby certify that this land surveying document was prepared and the related survey work was performed by me or under my direct personal supervision and that I am a duly licensed Land Surveyor under the laws of the State of Iowa.

David P. Schneider 7/10/2007
David P. Schneider P.L.S. #14417 Date:
My license renewal date is December 31, 2007.

Pages or sheets covered by this seal: THIS SHEET ONLY

SCHNEIDER
Land Surveying & Planning, Inc.
P.O. Box 128 Farley, Iowa 52046
Ph. #563-744-3631 Fax#563-744-3629



List Corners to be Indexed

Corners	Section	Twp	Range
SW CORNER SE1/4, SW1/4	27	84N	1E

Book 2 Page 572

JOB NO. 1045