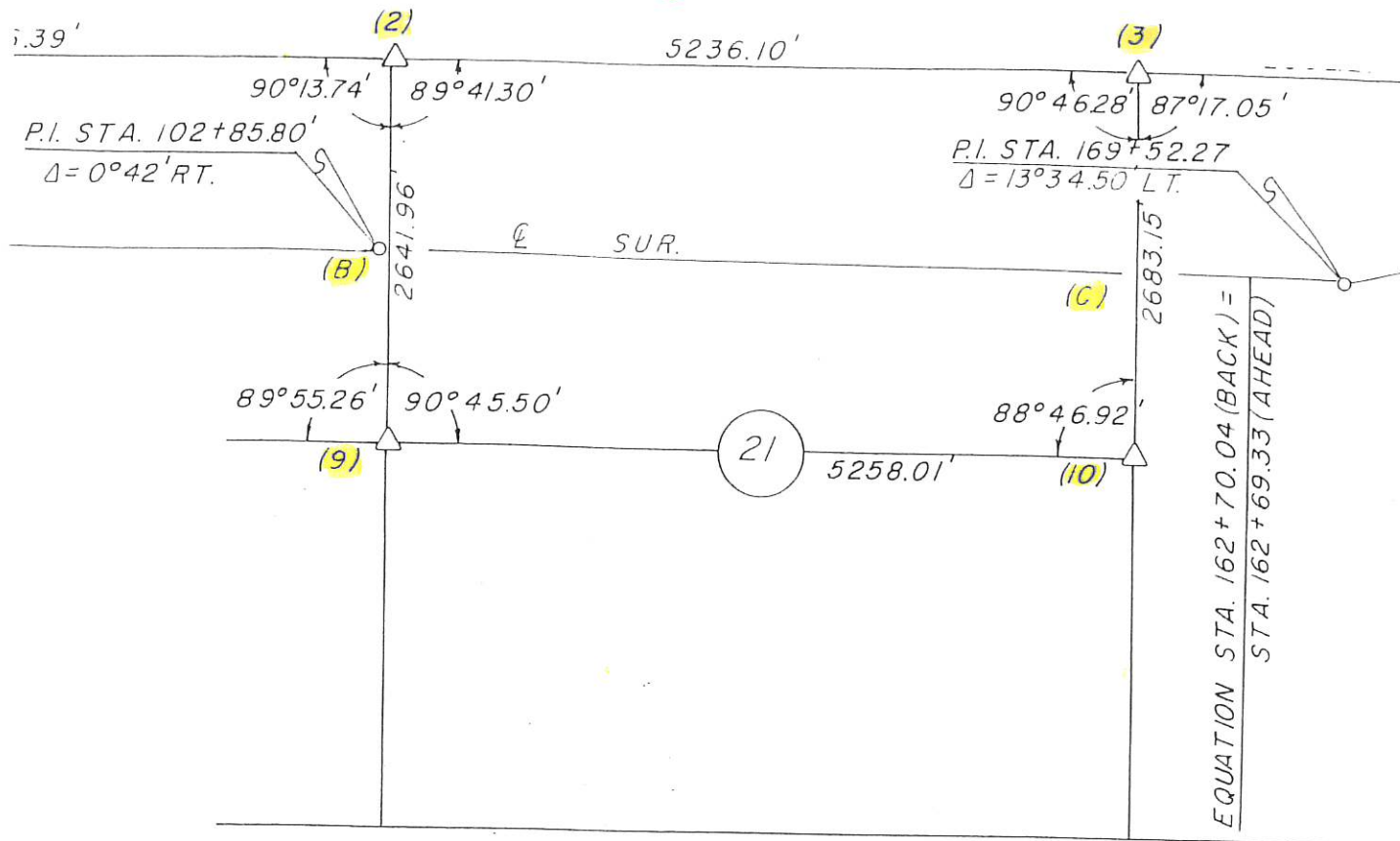


Sec. 21



LAND CORNER SURVEY
JACKSON COUNTY
PROJ. NO. FN-64-2-(15)--21-49
T84N R1E

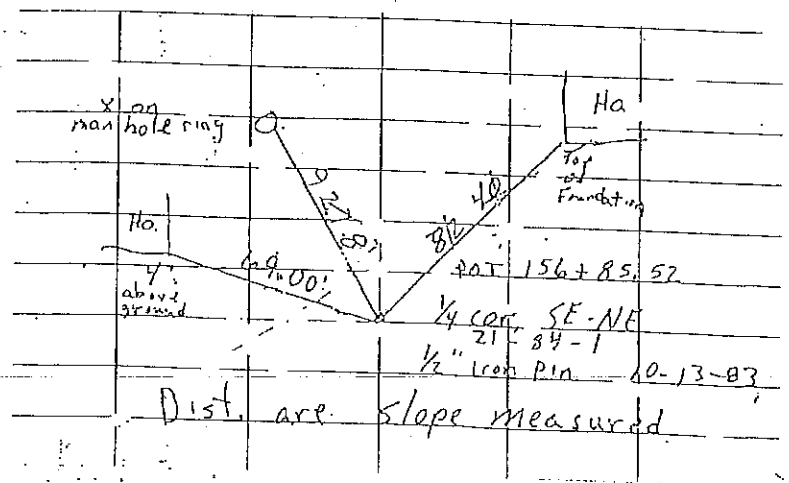
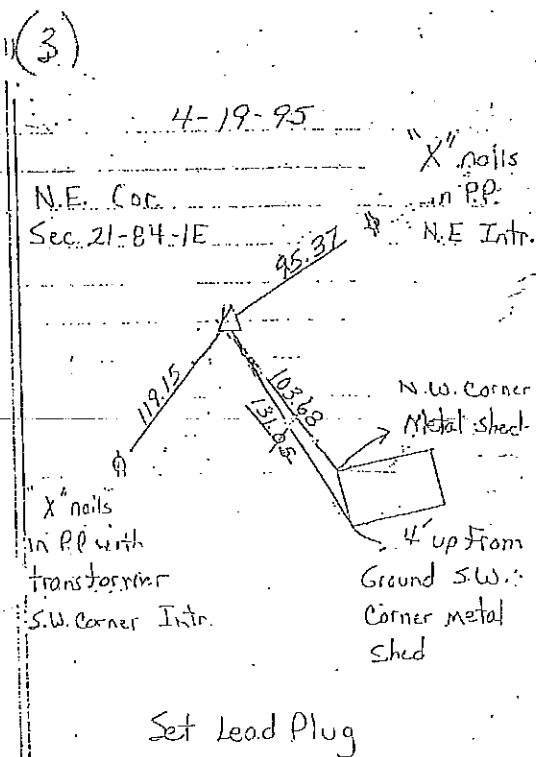
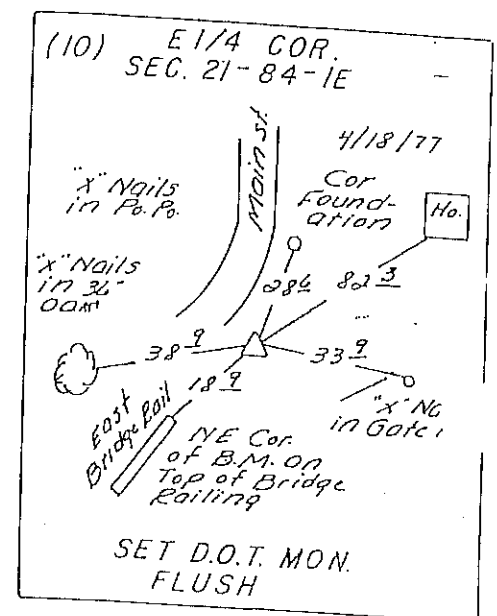
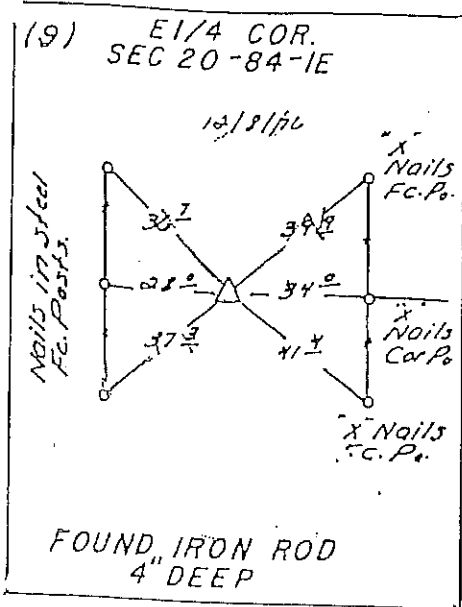
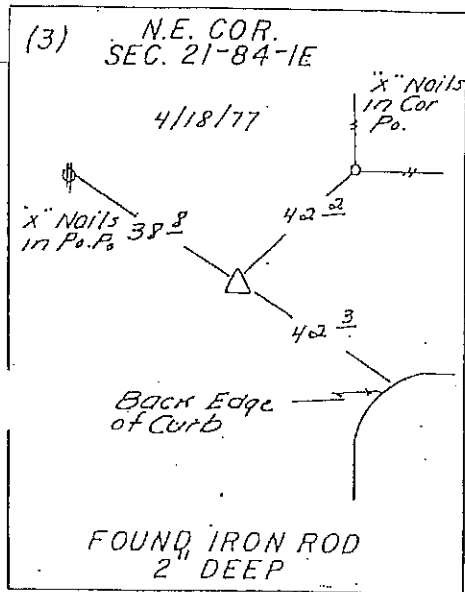
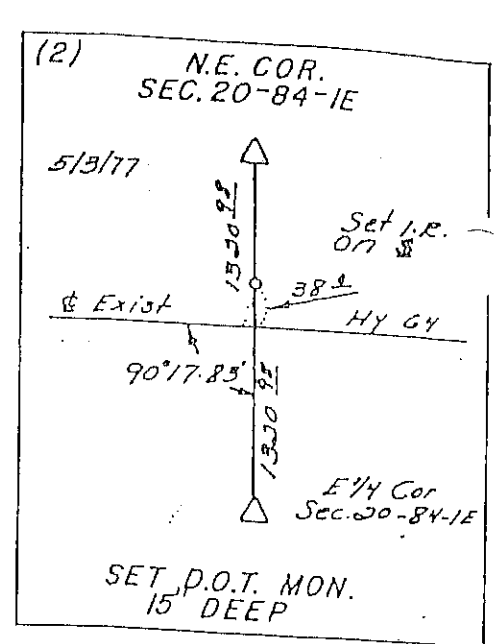
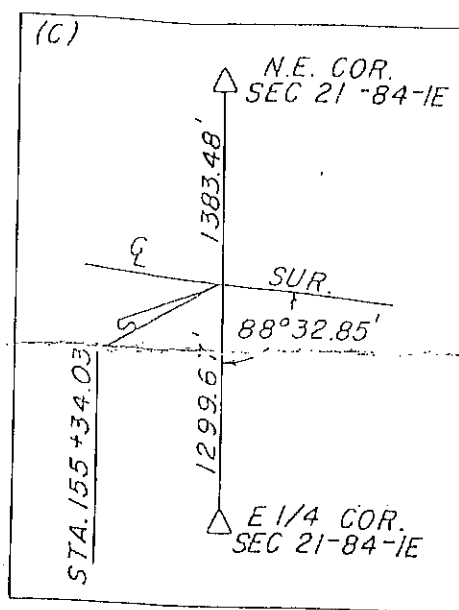
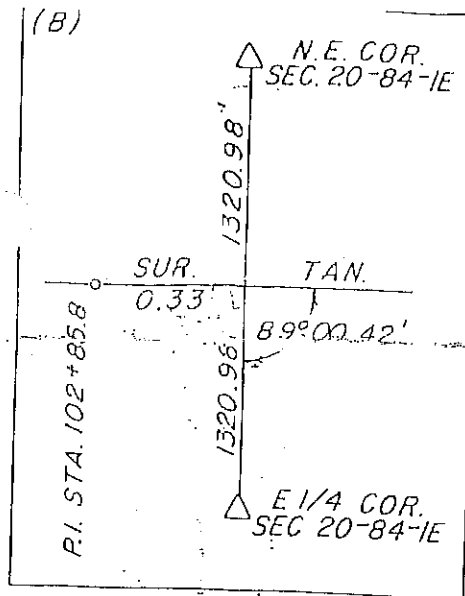
MADE FOR
IOWA DEPARTMENT OF TRANSPORTATION FOR
PURPOSE OF R.O.W. DESCRIPTION ON IA. HY 64
FROM MONMOUTH TO MAQUOKETA.

I HEREBY CERTIFY THAT THIS PLAT AND SURVEY
WERE MADE BY ME OR UNDER MY DIRECT PERSONAL
SUPERVISION AND THAT I AM A DULY REGISTERED
LAND SURVEYOR UNDER THE LAWS OF THE STATE
OF IOWA.

ASSISTED BY L.R. MCGUIRE, D.L. STOOKEY, ROBERT NEMEC, M.C. HORST
AND JOHN REASONER

DATE FEB 26, 1979

John T. Boyce
JOHN T. BOYCE R.L.S. NO. 6805



UNITED STATES PUBLIC LAND SURVEY CORNER CERTIFICATE

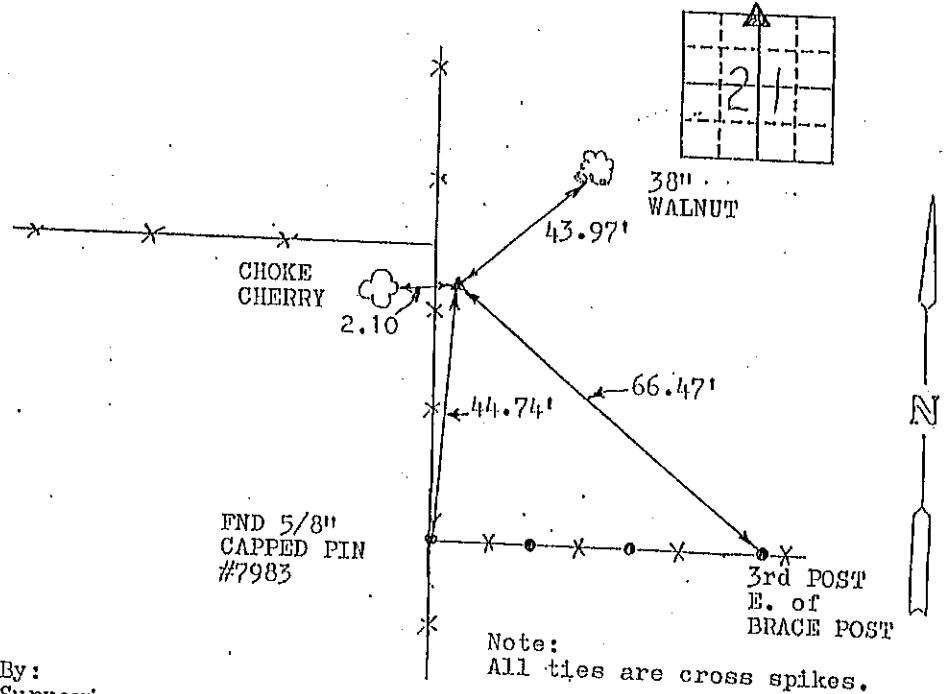
OF

Land Survey Monuments situated in Section 21 Township 84 N. Range 1 EAST, of the Fifth Principal Meridian, JACKSON County, Iowa.
Previously recorded as S 1/4 Cor of 16-84-1E Doc. No. 97-1214 in County Recorder's Office.
(book, page, document number, etc.)

(Show reason for preparing this certificate, the evidence and detailed procedures used in establishing the corner positions and monumentation found or placed.)
Monument Description and Remarks: SET 1/2" pin capped "RLS 10897" equidistant from and on line between NW & NE corners of section. Position fits N-S fence and fence line to West. Distance from this position also concurs with that used by Iowa Dept. of Transportation to acquire right of way along Highway #64

PLAN - VIEW

(Show a minimum of three reference ties to durable physical objects, relevant monuments and physical conditions that will enable recovery of the corner.)



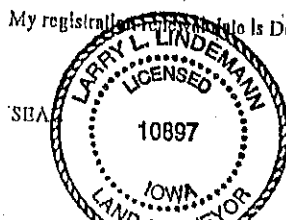
Prepared By:
C&L Land Surveying
811 W. 46th Street
Davenport, Ia. 52806
Ph. (319) 386-6729

I hereby certify that the survey work was completed and this land surveying document was prepared by me or under my direct personal supervision and that I am a duly registered land surveyor under the laws of the state of Iowa

Signature: LARRY L. LINDEMANN
Name typed or printed: LARRY L. LINDEMANN

Date: JAN 6, 1998 Reg. No. 10897

My registration expires on or before December 31, 1999



Corners	Section	Twp	Range
N. 1/4	21	84	1E.

BOOK 98 PAGE 0087

1998 JAN -7 A 9:51

SHIRLEY RITCHEY
JACKSON COUNTY, IOWA
RECORDER
feb 6 98

UNITED STATES PUBLIC LAND SURVEY CORNER CERTIFICATE

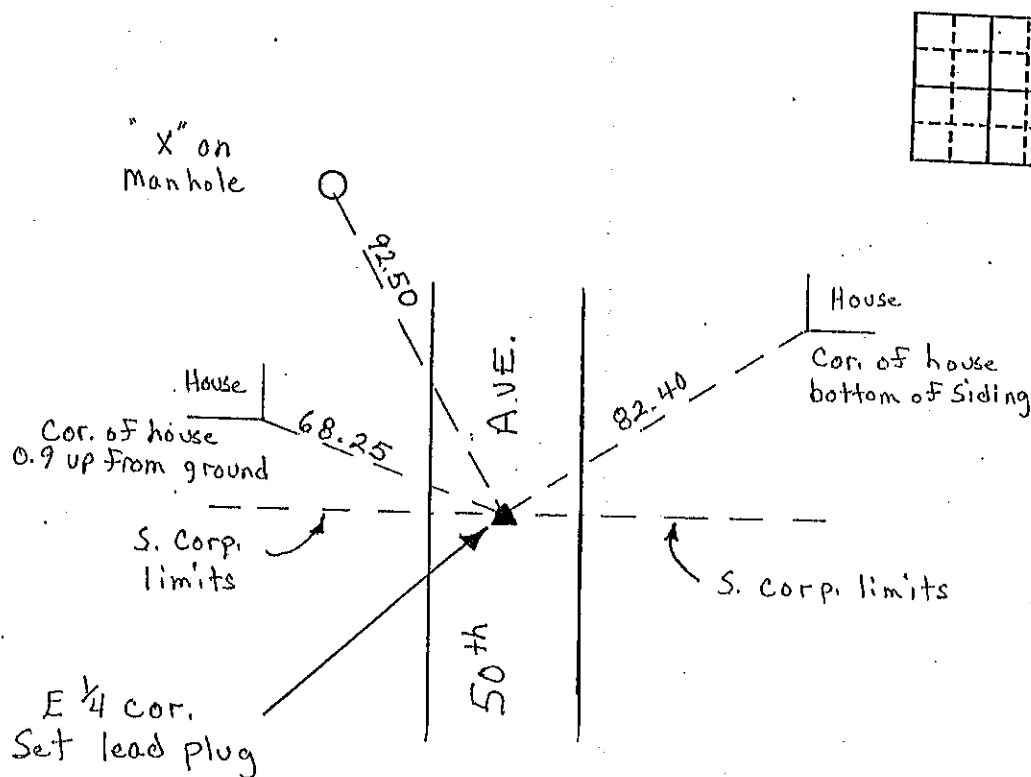
OF
 Land Survey Monuments situated in Section 21, Township 84 N, Range 1E,
 of the Fifth Principal Meridian, Jackson County, Iowa.
 Previously recorded in Book _____, Page _____

(Show reason for preparing this certificate, the evidence and detailed procedures used in establishing the corner positions and monumentation found or placed.)

Monument Description and Remarks: Reset after road construction
Paving. E. 1/4 cor. Sec. 21 - Set lead plug in the center
of 50th Ave. at the S. Corp. limits

PLAN - VIEW

(Show a minimum of three reference ties to durable physical objects, relevant monuments and physical conditions that will enable recovery of the corner.)

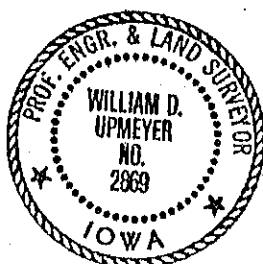


I hereby certify that the survey work was completed and this certificate was prepared by me or under my direct personal supervision and that I am a duly registered land surveyor under the laws of the state of Iowa.

William D. Upmeyer

REGISTERED LAND SURVEYOR NO. 2869

SEAL



List Corners to be Indexed

Corners	Section	Twp	Range
E 1/4	21	84 N	1E

98 1833

FILE NO. 98 1833
 BOOK 7 PAGE 350

1998 MAY 19 P 1:01

SHIRLEY RITENOUR
 JACKSON COUNTY, IOWA
 RECORDER

No fee

99-0775

BOOK 1 PAGE 369

99 FEB 26 AM 11:17

PHYLLIS K. GERLACH
JACKSON COUNTY, IOWA

RECORDED 538-4067

SLSI 9-90

MOHN SURVEYING ROGER R. MOHN 1888 GREAT RIVER ROAD LANSING, IOWA 52154
RMS TIESHEET.DWG JACKSON Co. CONSERVATION

UNITED STATES PUBLIC LAND SURVEY CORNER CERTIFICATE

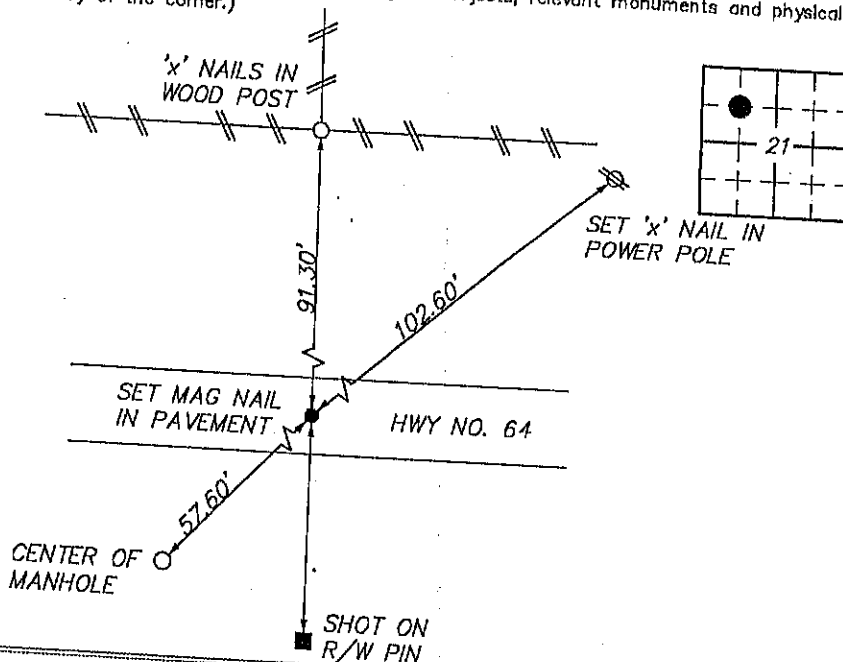
Land Survey Monuments situated in Section 21, Township 84 NORTH, Range 1 EAST, of the Fifth Principal Meridian, JACKSON County, Iowa.
Previously recorded in no record on file In County Recorder's Office.
(book, page, document number, etc.)

(Show reason for preparing this certificate, the evidence and detailed procedures used in establishing the corner positions and monumentation found or placed.)

Monument Description and Remarks: Established corner at intersection of the east line of the SW 1/4-NW 1/4 and the east-west 1/4 line of the NW 1/4 of Section 21. Set mag. nail in pavement.

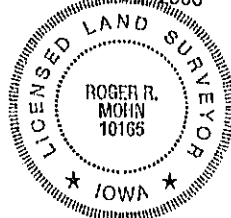
PLAN - VIEW

(Show a minimum of three reference ties to durable physical objects, relevant monuments and physical conditions that will enable recovery of the corner.)



I hereby certify that this land surveying document was prepared by me or under my direct personal supervision and that I am a duly Registered Land Surveyor under the laws of the state of Iowa.

Roger R. Mohn 2/24/1999
ROGER R. MOHN, P.E. & L.S. Iowa Registration No. 10165
My registration expires December 31, 2000



SEAL

Corners	List Section	to be Indexed	Twp	Range
SE COR. OF NW 1/4-NW 1/4	21		84N	1E

99 0776

BOOK 1 PAGE 370

Sec 6.00 99 Feb 26 11:17

MOHN SURVEYING ROGER R. MOHN 1888 GREAT RIVER ROAD LANSING, IOWA 538-4067
 RMS TIESHEET.DWG JACKSON Co. CONSERVATION

PHYLLIS M. CERLACH
 JACKSON COUNTY, IOWA

ORDER 19 538-4067

SLSI 9-90

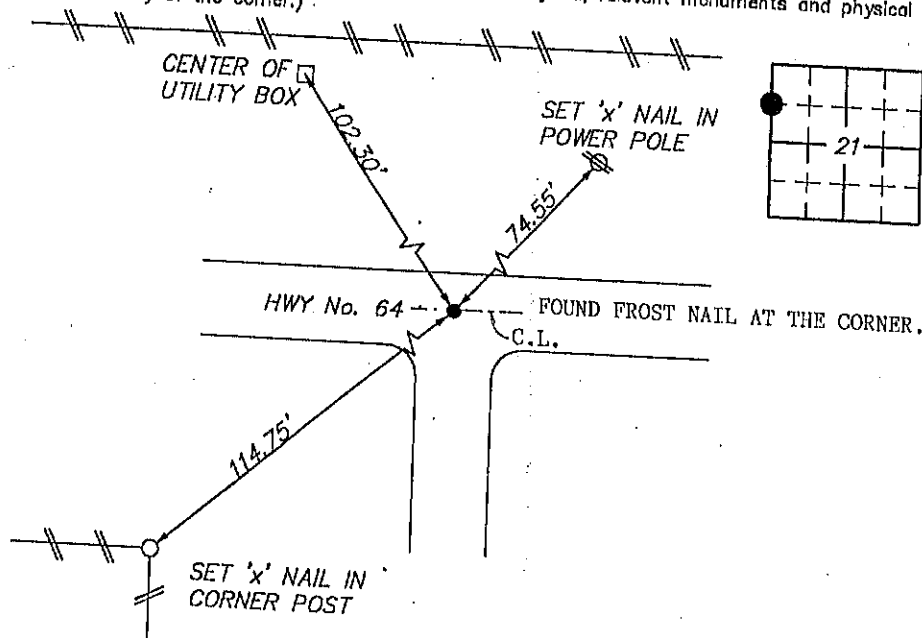
UNITED STATES PUBLIC LAND SURVEY CORNER CERTIFICATE

Land Survey Monuments situated in Section 21 of Township 84 NORTH, Range 1 EAST, of the Fifth Principal Meridian, JACKSON County, Iowa.
 Previously recorded in no record on file In County Recorder's Office.
 (book, page, document number, etc.)

(Show reason for preparing this certificate, the evidence and detailed procedures used in establishing the corner positions and monumentation found or placed.)
 Monument Description and Remarks: Found frost nail in pavement at the corner.

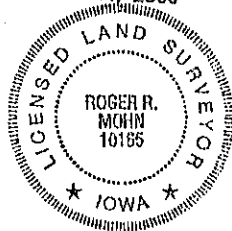
PLAN - VIEW

(Show a minimum of three reference ties to durable physical objects, relevant monuments and physical conditions that will enable recovery of the corner.)



I hereby certify that this land surveying document was prepared by me or under my direct personal supervision and that I am a duly Registered Land Surveyor under the laws of the state of Iowa.

Roger R. Mohn 2/24 19 99
 ROGER R. MOHN, P.E. & L.S. Iowa Registration No. 10165
 My registration expires December 31, 2000



SEAL

Corners	List Corners to be Indexed Section	Tw	Range
SW COR. OF NW 1/4-NW 1/4	21	84N	1E

99-0777

BOOK 1 PAGE 371

99 Feb 26 AM 11:17

JUL 6, 2000

PHYLLIS M. GERLACH
JACKSON COUNTY, IOWA

RECORDED (319) 538-4067

SLSI 9-90

MOHN SURVEYING ROGER R. MOHN 1888 GREAT RIVER ROAD LANSING, IOWA 52151
RMS TIESHEET.DWG JACKSON Co. CONSERVATION

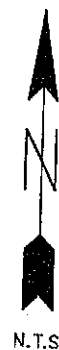
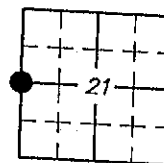
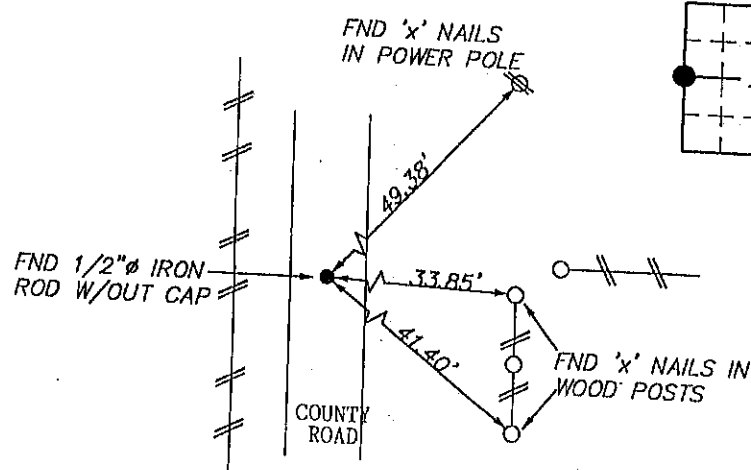
UNITED STATES PUBLIC LAND SURVEY CORNER CERTIFICATE

Land Survey Monuments situated in Section 21 of Township 84 NORTH, Range 1 EAST, of the Fifth Principal Meridian, JACKSON County, Iowa.
Previously recorded in no record on file In County Recorder's Office.
(book, page, document number, etc.)

(Show reason for preparing this certificate, the evidence and detailed procedures used in establishing the corner positions and monumentation found or placed.)
Monument Description and Remarks: Found $\frac{1}{2}$ " ϕ iron rod w/o cap at the corner.

PLAN - VIEW

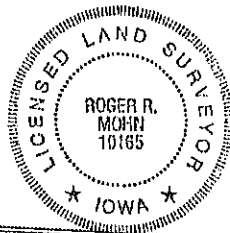
(Show a minimum of three reference ties to durable physical objects, relevant monuments and physical conditions that will enable recovery of the corner.)



I hereby certify that this land surveying document was prepared by me or under my direct personal supervision and that I am a duly Registered Land Surveyor under the laws of the state of Iowa.

Roger R. Mohn 2/24, 19 99
ROGER R. MOHN, P.E. & L.S. Iowa Registration No. 10165
My registration expires December 31, 2000

List Corners to be Indexed			
Corners	Section	Twp	Range
W1/4 COR. OF	21	84N	1E



SEAL

99-0778

BOOK 7 PAGE 372

Dec 6, 99 Feb 26 1999

PHYLLIS BERLACH

JACKSON COUNTY, IOWA 52001-4067

RECORDED

SLSI 9-90

MOHN SURVEYING ROGER R. MOHN 1888 GREAT RIVER ROAD LANSING, IOWA 52001-4067
 RMS TIESHEET.DWG JACKSON Co. CONSERVATION

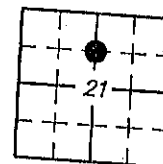
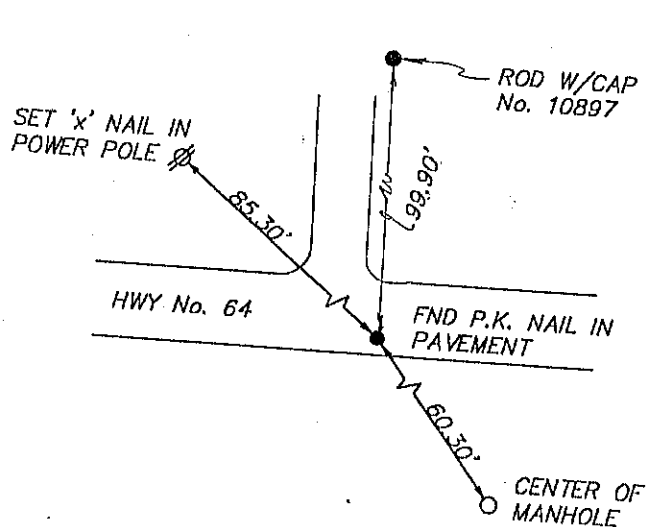
UNITED STATES PUBLIC LAND SURVEY CORNER CERTIFICATE

Land Survey Monuments situated in Section 21 OF 84 NORTH Township, Range
1 EAST, of the Fifth Principal Meridian, JACKSON County, Iowa.
 Previously recorded in no record on file in County Recorder's Office.
 (book, page, document number, etc.)

(Show reason for preparing this certificate, the evidence and detailed procedures used in establishing the corner positions
 and monumentation found or placed.)
 Monument Description and Remarks: Found Pk nail in pavement at the corner.

PLAN - VIEW

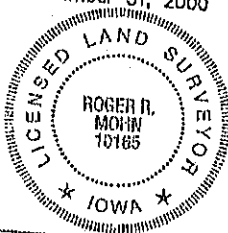
(Show a minimum of three reference ties to durable physical objects, relevant monuments and physical conditions
 that will enable recovery of the corner.)



N.T.S.

I hereby certify that this land surveying document was prepared by me or under my direct personal supervision and that I am a duly Registered Land Surveyor under the laws of the state of Iowa.

Roger R. Mohn 2/24 1999
 ROGER R. MOHN, P.E. & L.S. Iowa Registration No. 10165
 My registration expires December 31, 2000



SEAL

Corners	List Corners to be Indexed	Section	Twp	Range
NE COR. OF SET 1/4-NW 1/4	21	84N	1E	

99-0779

BOOK 1 PAGE 373

99 FEB 26 AM 11:17 Dec 6, 00

MOHN SURVEYING ROGER R. MOHN 1888 GREAT RIVER ROAD LANSING, IOWA 52151-1700 538-4067
RMS TIESHEET.DWG JACKSON Co. CONSERVATION JACKSON COUNTY, IOWA RECORDER SLSI 9-90

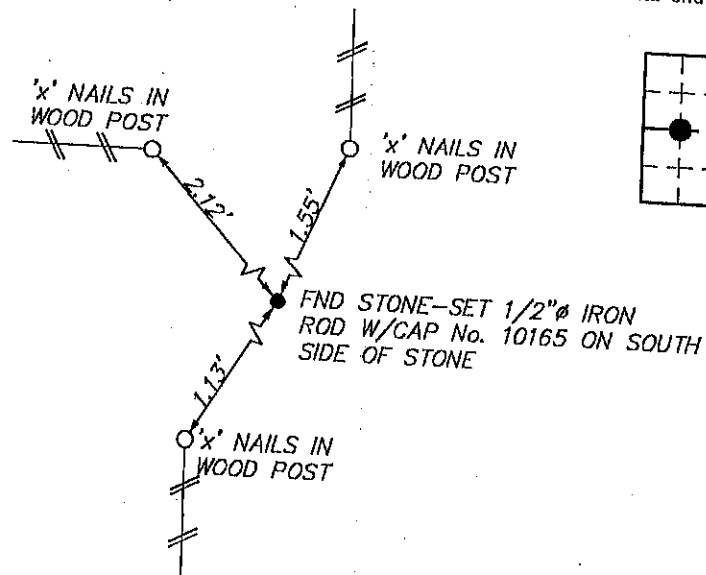
UNITED STATES PUBLIC LAND SURVEY CORNER CERTIFICATE

Land Survey Monuments situated in Section 21 Township 84 NORTH Range 1 EAST, of the Fifth Principal Meridian, JACKSON County, Iowa.
Previously recorded in no record on file In County Recorder's Office.
(book, page, document number, etc.)

(Show reason for preparing this certificate, the evidence and detailed procedures used in establishing the corner positions and monumentation found or placed.)
Monument Description and Remarks: Found stone at the corner. Set 1" iron on the south side of the stone.

PLAN - VIEW

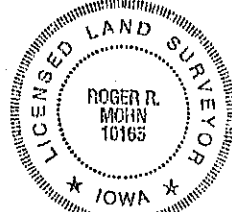
(Show a minimum of three reference ties to durable physical objects, relevant monuments and physical conditions that will enable recovery of the corner.)



I hereby certify that this land surveying document was prepared by me or under my direct personal supervision and that I am a duly Registered Land Surveyor under the laws of the state of Iowa.

Roger R. Mohn 2/24, 1999
ROGER R. MOHN, P.E. & L.S. Iowa Registration No. 10165
My registration expires December 31, 2000

SEAL



Corners	List Corners to be Indexed		Range
	Section	Twp	
SE COR. OF SW1/4-NW1/4	21	84N	1E

UNITED STATES PUBLIC LAND SURVEY CORNER CERTIFICATE

SLSI 9-94

OF

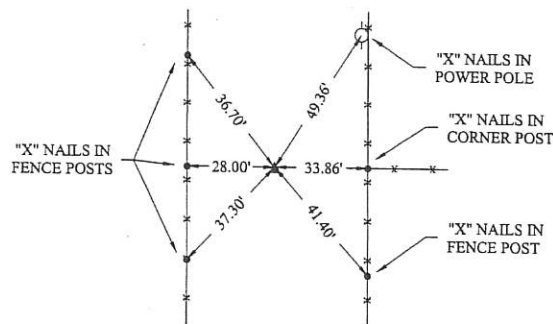
Land Survey Monuments situated in Section 21, Township 84, Range 1 E., of the Fifth Principal Meridian, JACKSON County, Iowa.
Previously recorded in NOT PREVIOUSLY RECORDED in County Recorder's Office.
(book, page, document number, etc.)

(Show reason for preparing this certificate, the evidence and detailed procedures used in establishing the corner positions and monumentation found or placed.)

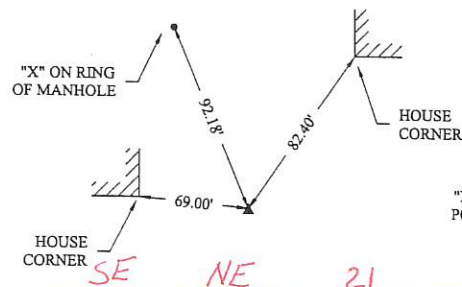
- Monument Description and Remarks: 1) FOUND IRON ROD 4" DEEP @ S.W. 1/4, N.W. 1/4 SEC. 21-84-1 E.
2) FOUND 1/2" IRON ROD 8" DEEP @ S.E. COR., N.E. 1/4 SEC. 21-84-1 E.
3) FOUND LEAD PLUG @ N.E. COR., N.E. 1/4 SEC. 21-84-1 E.

PLAN - VIEW

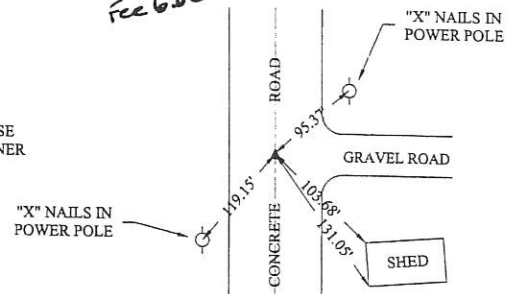
(Show a minimum of three reference ties to durable physical objects, relevant monuments and physical conditions that will enable recovery of the corner.)



1) S.W. COR., N.W. 1/4 SEC. 21-82-1 E.



2) S.W. COR., S.W. 1/4 SEC. 28-84-2 E.



3) N.E. COR., N.E. 1/4 SEC. 21-84-1 E.

FILE NO. 03-1895
PAGE 37
03 APR -2 PM 12:30
PHYLLIS M. GERLACH
JACKSON COUNTY, IOWA
RECORDER
Fee 6.00

I hereby certify that the survey work was completed and this land surveying document was prepared by me or under my direct personal supervision and that I am a duly licensed land surveyor under the laws of the state of Iowa.

Signature: [Signature]

Name typed or printed: Larry L. Lindemann - C&L LAND SURVEYING
P.O. BOX 2666, DAVENPORT, IA 52809-2666

Date: 2/18/03 License No. 10897

My license renewal date is December 31, 2003

SEAL



List Corners to be Indexed			
Corners	Section	Twp	Range
S.W. COR., N.W. 1/4	21	84	1 E.
<u>SE</u> S.W. COR., N.E. 1/4	21	84	1 E.
N.E. COR., N.E. 1/4	21	84	1 E.



Document 09-2192

Book 2 Page 676 Type 15 001 Pages 1
Date 6/08/2009 Time 10:35 AM
Rec Amt \$7.00

ARLENE SCHAUF, RECORDER/REGISTRAR
JACKSON COUNTY IOWA

Prepare's Name: Buesing & Associates

Address: 1212 Locust St. Dubuque, IA

Telephone: (563) 556-4389

SLSI 9-94

UNITED STATES PUBLIC LAND SURVEY CORNER CERTIFICATE

OF

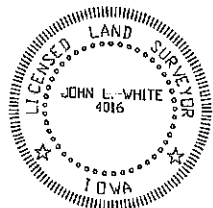
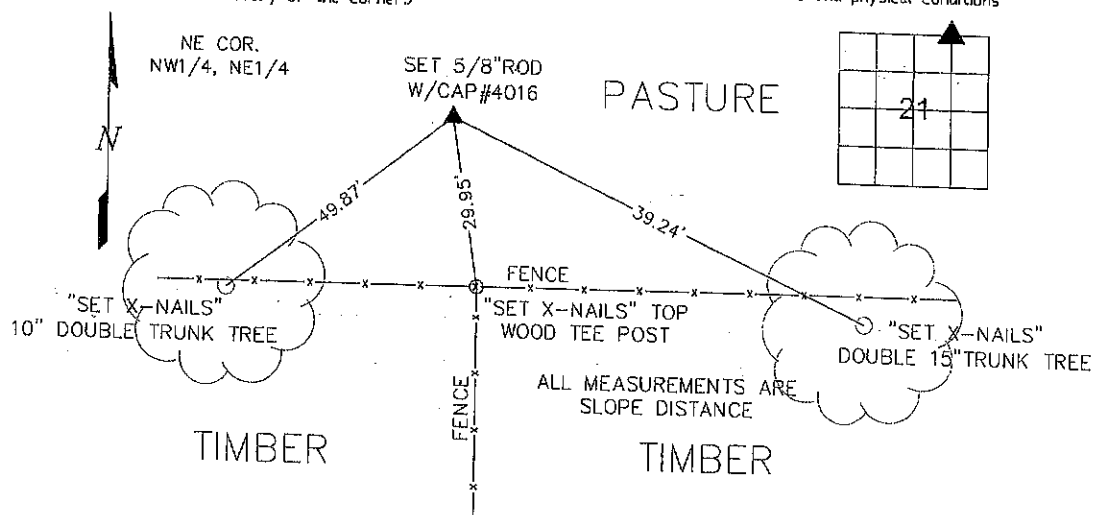
Land Survey Monuments situated in Section 21, Township 84N, Range 1E, of the Fifth Principal Meridian, JACKSON County, Iowa.
Previously recorded in NO PREVIOUS RECORD in County Recorder's Office.
(book, page, document number, etc.)

(Show reason for preparing this certificate, the evidence and detailed procedures used in establishing the corner positions and monumentation found or placed.)

Monument Description and Remarks: SET 5/8" ROD W/CAP #4016 @ THE NE CORNER OF NW1/4, NE1/4 MID WAY BETWEEN N1/4 CORNER AND NE1/4 CORNER EXPOSED 2".

PLAN - VIEW

(Show a minimum of three reference ties to durable physical objects, relevant monuments and physical conditions that will enable recovery of the corner.)



I HEREBY CERTIFY THAT THIS LAND SURVEYING DOCUMENT WAS PREPARED AND THE RELATED SURVEY WORK WAS PERFORMED BY ME OR UNDER MY DIRECT PERSONAL SUPERVISION AND THAT I AM A DULY LICENSED LAND SURVEYOR UNDER THE LAWS OF THE STATE OF IOWA.

Terry L. Adlker 6-5-09
TERRY L. ADLKER (DATE)

LICENSE NUMBER 4016

MY LICENSE RENEWAL DATE IS DECEMBER 31, 2010

Corners	List Corners to be Indexed	Section	Twp	Range
NE COR. OF NW1/4 NE1/4	21	84N	1E	

BUESING
ASSOCIATES INC.
ENGINEERS AND SURVEYORS
1212 LOCUST ST, DUBUQUE, IA
(563) 556-4389

MONUMENT RECORD
COUNTY: JACKSON
TOWNSHIP: MONMOUTH

DATE PLOTTED: 6-5-09
DATE REVISED:

FIELD BOOK # 169
PAGE # 4

DRAWING
08104-06

Book 2 Page 676



Document 21-5169

Type 15 001

Pages 1

Date 12/16/2021 Time 12:08 PM

Rec Amt \$7.00

ARLENE SCHAUF, RECORDER/REGISTRAR
JACKSON COUNTY IOWA

PREPARED BY: MICHAEL J. WEBER, WEBER SURVEYING, LLC, 26789 46TH AVE, BERNARD, IA 52032 (563) 879-4173

UNITED STATES PUBLIC LAND SURVEY CORNER CERTIFICATE OF LAND SURVEY MONUMENTS SITUATED IN SECTION 21, TOWNSHIP 84 NORTH, RANGE 1 EAST OF THE FIFTH PRINCIPAL MERIDIAN, JACKSON COUNTY, IOWA. PREVIOUSLY RECORDED

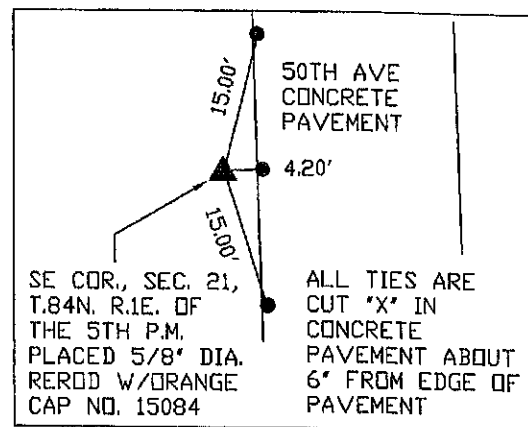
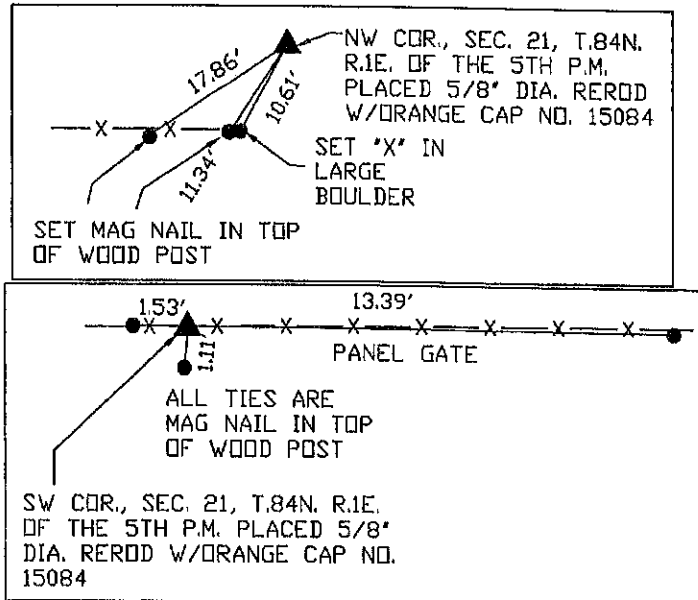
(book, page, document number, etc.)

(Show reason for preparing this certificate, the evidence and detailed procedures used in establishing the corner positions and monumentation found or placed.)

-SE COR., SEC. 21, T.84N. R.1E. OF THE 5TH P.M. PLACED 5/8" DIA. REROD W/ORANGE CAP NO. 15084. ESTABLISHED CORNER MIDWAY AND ONLINE BETWEEN THE EAST 1/4 COR. AND THE SE CORNER OF SAID SECTION 21.
-SW COR., SEC. 21, T.84N. R.1E. OF THE 5TH P.M. PLACED 5/8" DIA. REROD W/ORANGE CAP NO. 15084. ESTABLISHED CORNER BY BREAKING DOWN AND CALCULATING THE CENTER OF SE 1/4 OF SECTION 21.
-NW COR., SEC. 21, T.84N. R.1E. OF THE 5TH P.M. PLACED 5/8" DIA. REROD W/ORANGE CAP NO. 15084. ESTABLISHED CORNER MIDWAY AND ONLINE BETWEEN THE EAST 1/4 COR. AND THE CENTER OF SAID SECTION 21

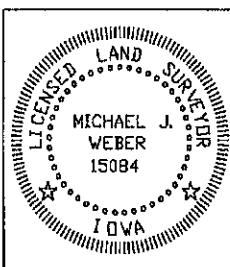
(Show a minimum of three reference ties to durable physical objects, relevant monuments and physical conditions that will enable recovery of the corner.)

PLAN - VIEW



DRAWING NOT TO SCALE

DWG. NO. 21156



I HEREBY CERTIFY THAT THIS LAND SURVEYING DOCUMENT WAS PREPARED AND THE RELATED SURVEY WORK WAS PERFORMED BY ME OR UNDER MY DIRECT PERSONAL SUPERVISION AND THAT I AM A DULY LICENSED LAND SURVEYOR UNDER THE LAWS OF THE STATE OF IOWA.

Michael J. Weber
MICHAEL J. WEBER

(DATE)

LICENSE NUMBER 15084

MY LICENSE RENEWAL DATE IS DECEMBER 31, 2021

SHEETS COVERED BY THIS SEAL: THIS SHEET

Corner	Sec	Twp	Range
SE COR. NE-SE,	21	84N	1E
SW COR. NE-SE,	21	84N	1E
NW COR. NE-SE,	21	84N	1E