

FILE NO. 04-2830
 PK 2 PAGE 288
 04 JUN 18 AM 9:31

Prepared by: SCHNEIDER Land Surveying and Planning, Inc. P.O. Box 128 Farley, Iowa 52046
 PHYLIS M. GERLACH
 JACSON COUNTY, IOWA
 RECORDER

UNITED STATES PUBLIC LAND SURVEY CORNER CERTIFICATE OF

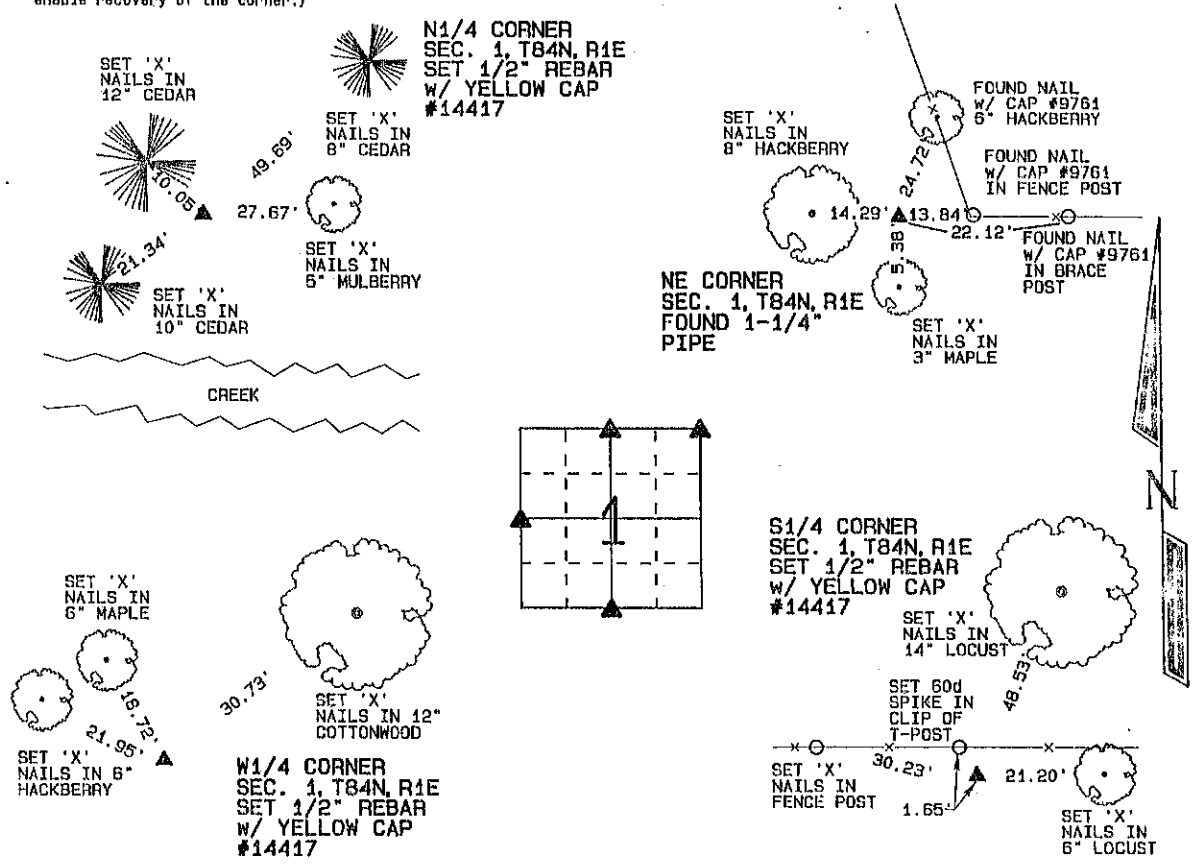
Land Survey Monuments situated in Section 1, Township B4 North, Range 1 East of the Fifth Principal Meridian, Jackson County, Iowa.
 Previously recorded (NONE OF RECORD)

(Show reason for preparing this certificate, the evidence and detailed procedures used in establishing the corner positions and monumentation found or placed.)

Monument Description and Remarks: A 1-1/4" PIPE WAS FOUND AT THE NE CORNER OF SEC. 1, T84N, R1E AS ILLUSTRATED IN NOTES OBTAINED FROM LARRY BOYER, P.L.S. #9761 RELATED TO A SURVEY PERFORMED IN SECTION 6, T84N, R2E. THE N1/4 CORNER OF SEC. 1, T84N, R1E WAS ESTABLISHED ON A PROPORTIONED LINE FROM THE NW CORNER TO THE NE CORNER OF SECTION 1. THE W1/4 CORNER OF SEC. 1, T84N, R1E WAS ESTABLISHED ON A PROPORTIONED LINE FROM THE SW CORNER TO THE NW CORNER OF SECTION 1. THE S1/4 CORNER OF SEC. 1, T84N, R1E WAS ESTABLISHED AT THE MIDPOINT OF A LINE FROM THE SW CORNER TO THE SE CORNER OF SECTION 1.

PLAN - VIEW

(Show a minimum of three reference ties to durable physical objects, relevant monuments and physical conditions that will enable recovery of the corner.)

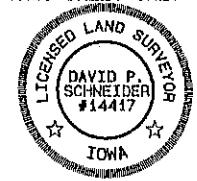


I hereby certify that this land surveying document was prepared and the related survey work was performed by me or under my direct personal supervision and that I am a duly licensed Land Surveyor under the laws of the State of Iowa.

David P. Schneider 6/16/2004
 David P. Schneider P.L.S. #14417 Date:
 My license renewal date is December 31, 2005.

Pages or sheets covered by this seal: THIS SHEET ONLY

SCHNEIDER
 Land Surveying & Planning, Inc.
 P.O. Box 128 Farley, Iowa 52046
 Ph. #563-744-3631 Fax #563-744-3629



List Corners to be Indexed			
Corners	Section	Twp	Range
N1/4	1	84N	1E
W1/4	1	84N	1E
S1/4	1	84N	1E
NE	1	84N	1E

FILE NO. 04-2831
PAGE 289

04 JUN 18 AM 9:31

PHYLLIS M. GERLACH
JACKSON COUNTY, IOWA
RECORDER *File 11*

Prepared by: SCHNEIDER Land Surveying and Planning, Inc. P.O. Box 128 Farley, Iowa 52046 563-744-3631

UNITED STATES PUBLIC LAND SURVEY CORNER CERTIFICATE OF

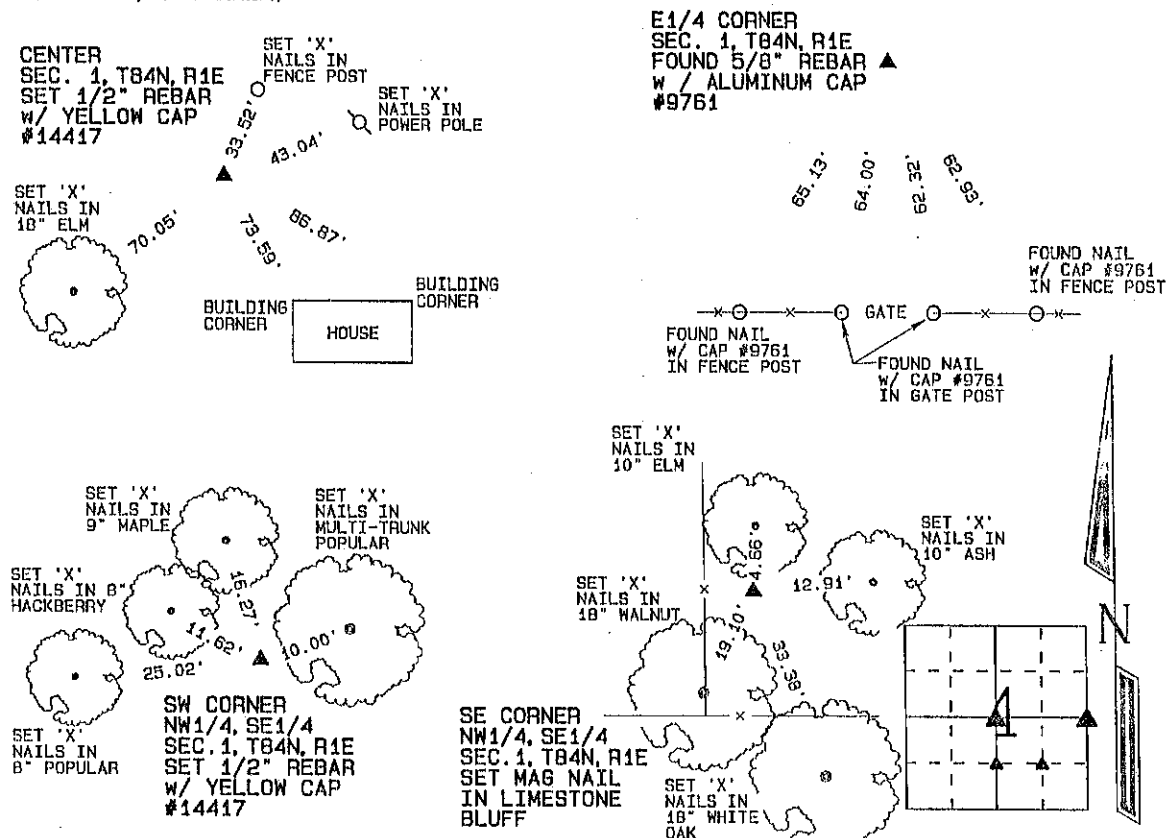
Land Survey Monuments situated in Section 1, Township B4 North, Range 1 East of the Fifth Principal Meridian, Jackson County, Iowa.
Previously recorded (NONE OF RECORD)

(Show reason for preparing this certificate, the evidence and detailed procedures used in establishing the corner positions and monumentation found or placed.)

Monument Description and Remarks: THE CENTER OF SECTION 1, T84N, R1E WAS ESTABLISHED AT THE INTERSECTION OF A LINE FROM THE N1/4 CORNER TO THE S1/4 CORNER AND A LINE FROM THE E1/4 CORNER TO THE W1/4 CORNER OF SECTION 1. THE SW CORNER OF THE NW1/4 OF THE SE1/4 OF SEC. 1, T84N, R1E WAS ESTABLISHED AT THE MIDPOINT OF A LINE FROM THE S1/4 CORNER TO THE CENTER OF SAID SECTION 1. A 5/8" REBAR W/ ALUMINUM CAP #9761 WAS FOUND AT THE E1/4 CORNER OF SEC. 1, T84N, R1E AS ILLUSTRATED IN SECTION CORNER TIES OBTAINED FROM LARRY BOYER THAT ARE DATED AUG. 3, 1987. THE SE CORNER OF THE NW1/4 OF THE SE1/4 OF SEC. 1, T84N, R1E WAS PLACED AT THE THEORETICAL CENTER OF THE SOUTHEAST QUARTER OF SECTION 1.

PLAN - VIEW

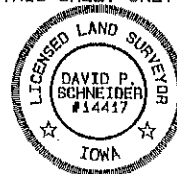
(Show a minimum of three reference ties to durable physical objects, relevant monuments and physical conditions that will enable recovery of the corner.)



I hereby certify that this land surveying document was prepared and the related survey work was performed by me or under my direct personal supervision and that I am a duly licensed Land Surveyor under the laws of the State of Iowa.

David P. Schneider 6/16/2004
David P. Schneider P.L.S. #14417 Date:
My license renewal date is December 31, 2005.
Pages or sheets covered by this seal: THIS SHEET ONLY

SCHNEIDER
Land Surveying & Planning, Inc.
P.O. Box 128 Farley, Iowa 52046
Ph. #563-744-3631 Fax #563-744-3629



List Corners to be Indexed

Corners	Section	Twp	Range
CENTER	1	84N	1E
E1/4	1	84N	1E
SW CORNER NW1/4, SE1/4	1	84N	1E
SE CORNER NW1/4, SE1/4	1	84N	1E



Document 07-2072

Book 2 Page 560 Type 15 001 Pages 1

Date 4/27/2007 Time 11:39 AM

Rec Amt \$7.00

ARLENE SCHAUF, RECORDER
JACKSON COUNTY IOWA

Prepared by: SCHNEIDER Land Surveying and Planning, Inc. P.O. Box 128 Farley, Iowa 52046 563-744-3631

UNITED STATES PUBLIC LAND SURVEY CORNER CERTIFICATE OF

Land Survey Monuments situated in Section 1, Township 84 North, Range 1 East
of the Fifth Principal Meridian, Jackson County, Iowa.
Previously recorded (NONE OF RECORD)

(BOOK, PAGE / INSTR. NO. / CABINET, BLIND)

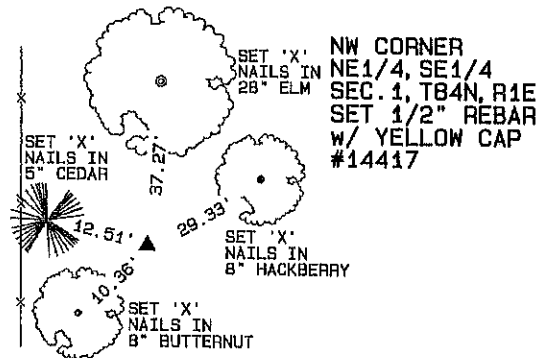
(Show reason for preparing this certificate, the evidence and detailed procedures used in establishing the corner positions and monumentation found or placed.)

Monument Description and Remarks: THE NW CORNER OF THE NE1/4 OF THE SE1/4 OF SECTION 1, T84N, R1E
WAS ESTABLISHED AT THE MIDPOINT OF A LINE FROM THE CENTER TO THE E1/4 CORNER OF SAID SECTION 1.

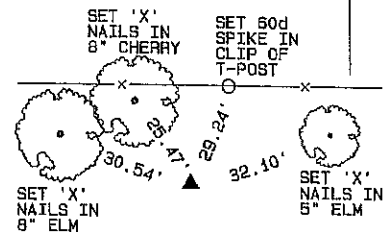
THE SE CORNER OF THE NE1/4 OF THE SE1/4 OF SECTION 1, T84N, R1E WAS ESTABLISHED AT THE MIDPOINT OF A LINE FROM
THE SE CORNER TO THE E1/4 CORNER OF SAID SECTION 1.

PLAN - VIEW

(Show a minimum of three reference ties to durable physical objects, relevant monuments and physical conditions that will enable recovery of the corner.)



SE CORNER
NE1/4, SE1/4
SEC. 1, T84N, R1E
SET 1/2" REBAR
W/ YELLOW CAP
#14417



I hereby certify that this land surveying document was prepared and the related survey work was performed by me or under my direct personal supervision and that I am a duly licensed Land Surveyor under the laws of the State of Iowa.

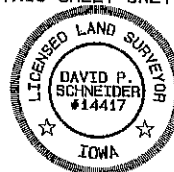
David P. Schneider P.L.S. #14417

Date: 3/30/2009

My license renewal date is December 31, 2007.

Pages or sheets covered by this seal: THIS SHEET ONLY

SCHNEIDER
Land Surveying & Planning, Inc.
P.O. Box 128 Farley, Iowa 52046
Ph. #563-744-3631 Fax #563-744-3629



List Corners to be Indexed

Corners	Section	Twp	Range
NW CORNER NE1/4, SE1/4	1	84N	1E
SE CORNER NE1/4, SE1/4	1	84N	1E



Document 10-1998

Book 2 Page 717 Type 15 001 Pages 1
Date 5/25/2010 Time 9:06 AM
Rec Amt \$9.00

ARLENE SCHAUF, RECORDER/REGISTRAR
JACKSON COUNTY IOWA

PREPARED BY: MICHAEL J. WEBER, WEBER SURVEYING, LLC, 26789 46TH AVE, BERNARD, IA 52032 (563) 879-4173

UNITED STATES PUBLIC LAND SURVEY CORNER CERTIFICATE OF

LAND SURVEY MONUMENTS SITUATED IN SECTION 1, TOWNSHIP 84 NORTH, RANGE 1 EAST
OF THE FIFTH PRINCIPAL MERIDIAN, JACKSON COUNTY, IOWA.
PREVIOUSLY RECORDED NONE UNLESS NOTED BELOW

(book, page, document number, etc.)

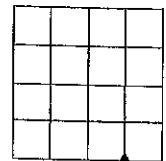
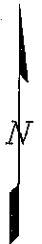
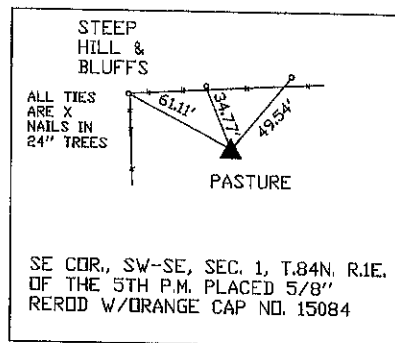
(Show reason for preparing this certificate, the evidence and detailed procedures used in establishing the corner positions and monumentation found or placed.)

Monument Description and Remarks:

-SE COR., SW-SE, SEC. 1, T.84N. R.1E. OF THE 5TH P.M. PLACED 5/8" REROD W/ORANGE CAP NO. 15084.
PLACED ONLINE AND MIDWAY BETWEEN THE S 1/4 CORNER AND SE CORNER OF SEC. 1

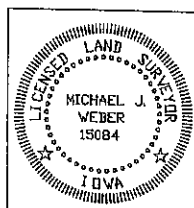
(Show a minimum of three reference ties to durable physical objects, relevant monuments and physical conditions that will enable recovery of the corner.)

PLAN - VIEW



DRAWING NOT TO SCALE

DWG. NO. PEET



I HEREBY CERTIFY THAT THIS LAND SURVEYING DOCUMENT WAS
PREPARED AND THE RELATED SURVEY WORK WAS PERFORMED BY ME OR
UNDER MY DIRECT PERSONAL SUPERVISION AND THAT I AM A DULY
LICENSED LAND SURVEYOR UNDER THE LAWS OF THE STATE OF IOWA.

MICHAEL J. WEBER
LICENSE NUMBER 15084
MY LICENSE RENEWAL DATE IS DECEMBER 31, 2011

SHEETS COVERED BY THIS SEAL: THIS SHEET

List Corners to be Indexed
Corner Sec Twp Range
SE COR., SW-SE 1 84N 1E

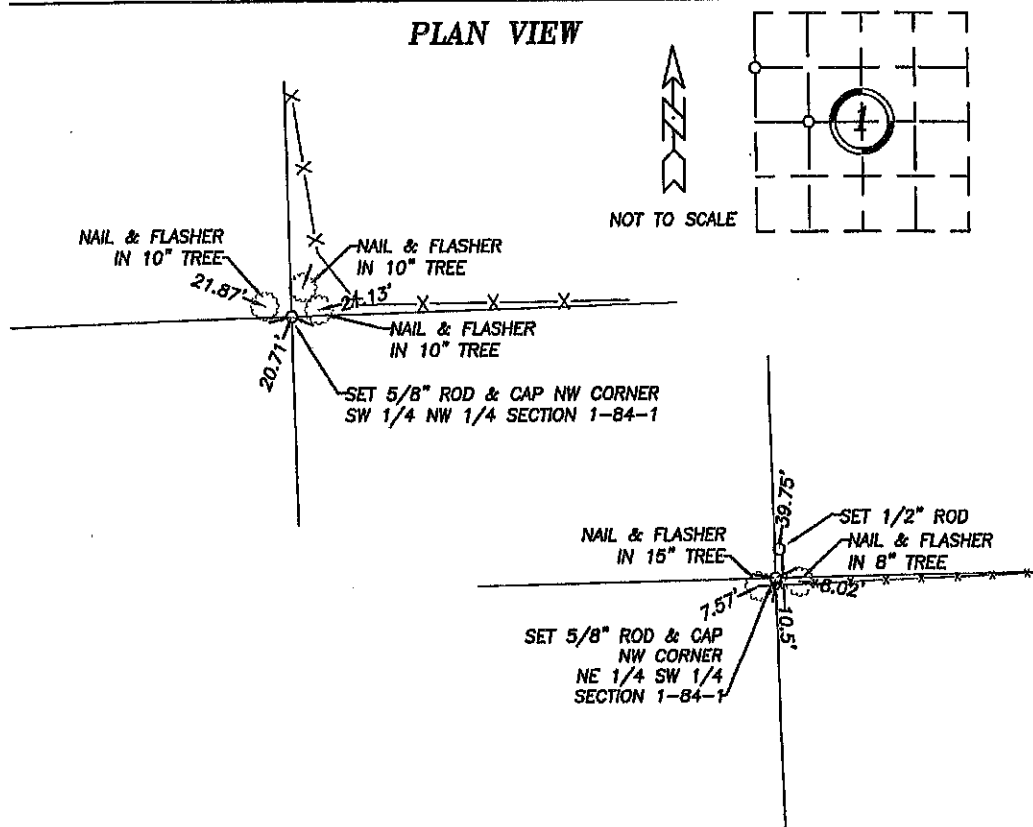


Document 23-2924

Type 15 001 Pages 1
Date 10/18/2023 Time 9:53 AM
Rec Amt \$7.00PREPARED BY:
WILLIAM HOLT, PLS
NORWEST SURVEYING SERVICES, INC.
301 E LINCOLNWAY
MORRISON, IL 61270ARLENE SCHAUF, RECORDER/REGISTRAR
JACKSON COUNTY IOWA**UNITED STATES PUBLIC LAND SURVEY CORNER CERTIFICATE**
OFLand Survey Monuments in Section 1 in Township B4 North (T84N), Range 1 East (R1E)
of the Fifth Principal Meridian (5th PM), Jackson County, Iowa. (Not Previously Recorded)

A Monuments were placed at the Northwest corner of the Northeast Quarter (NE 1/4) of the Southwest Quarter (SW 1/4) & the Northwest corner of the Southwest Quarter (SW 1/4) of the Northwest Quarter (NW 1/4) of Section 1 per the descriptions below

The corner locations were established at a prorata locations using existing monuments, fences and occupation lines within this and adjoining Sections.

PLAN VIEW

Project No. 2023205

I hereby certify that the survey work was completed
and this land surveying document was prepared by
me or under my direct personal supervision and
that I am a duly registered land surveyor under the
laws of the State of Iowa.

Signature:

William E. Holt

Iowa Registration No. 14105

My Registration Expires on December 31, 2024 C.E.

Dated this 16th day of October, 2023 C.E.**Corners to be Indexed**

Corner	Section	Township	Range
NW Corner NE 1/4 SW 1/4	1	84	1
NW Corner SW 1/4 NW 1/4	1	84	1



Document 23-1601

Type 15 001

Pages 1

Date 6/22/2023 Time 9:29 AM

Rec Amt \$7.00

ARLENE SCHAUF, RECORDER/REGISTRAR
JACKSON COUNTY IOWA

PREPARED BY: MICHAEL J. WEBER, WEBER SURVEYING, LLC, 26789 46TH AVE, BERNARD, IA 52032 (563) 879-4173

UNITED STATES PUBLIC LAND SURVEY CORNER CERTIFICATE OF

LAND SURVEY MONUMENTS SITUATED IN SECTION 1, TOWNSHIP 84 NORTH, RANGE 1 EAST
OF THE FIFTH PRINCIPAL MERIDIAN, JACKSON COUNTY, IOWA.
PREVIOUSLY RECORDED NONE

(book, page, document number, etc.)

(Show reason for preparing this certificate, the evidence and detailed procedures used in establishing the corner positions and monumentation found or placed.)

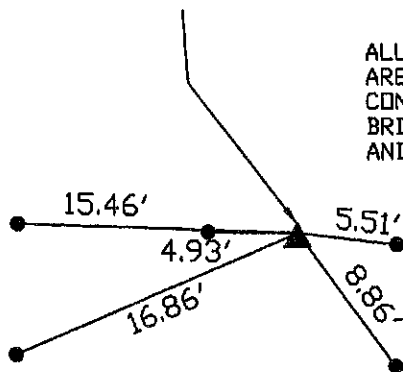
Monument Description and Remarks:

-SE COR. NW-SW, SEC. 1, T84N R1E OF THE 5TH P.M. PLACED 'X' IN CONCRETE BRIDGE
DECK. ESTABLISHED BY BREAKING DOWN THE SW 1/4

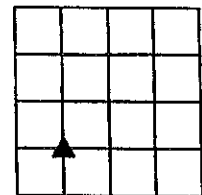
(Show a minimum of three reference ties to durable physical objects, relevant monuments and physical conditions that will enable recovery of the corner.)

PLAN - VIEW

SE COR. NW-SW, SEC. 1, T84N R1E OF THE 5TH
P.M. FOUND 'X' IN CONCRETE BRIDGE DECK



ALL TIES
ARE 'X' IN
CONCRETE
BRIDGE DECK
AND CURB



DRAWING NOT TO SCALE



DWG. NO. 23079

	I HEREBY CERTIFY THAT THIS LAND SURVEYING DOCUMENT WAS PREPARED AND THE RELATED SURVEY WORK WAS PERFORMED BY ME OR UNDER MY DIRECT PERSONAL SUPERVISION AND THAT I AM A DULY LICENSED LAND SURVEYOR UNDER THE LAWS OF THE STATE OF IOWA. <i>Michael J. Weber</i> <i>June 21, 2023</i> MICHAEL J. WEBER (DATE) LICENSE NUMBER 15084 MY LICENSE RENEWAL DATE IS DECEMBER 31, 2023 SHEETS COVERED BY THIS SEAL: <u>THIS SHEET</u>	List Corners to be Indexed Corner Sec Twp Range SE COR. NW-SW 1 84N 1E