

UNITED STATES PUBLIC LAND SURVEY CORNER CERTIFICATE

OF

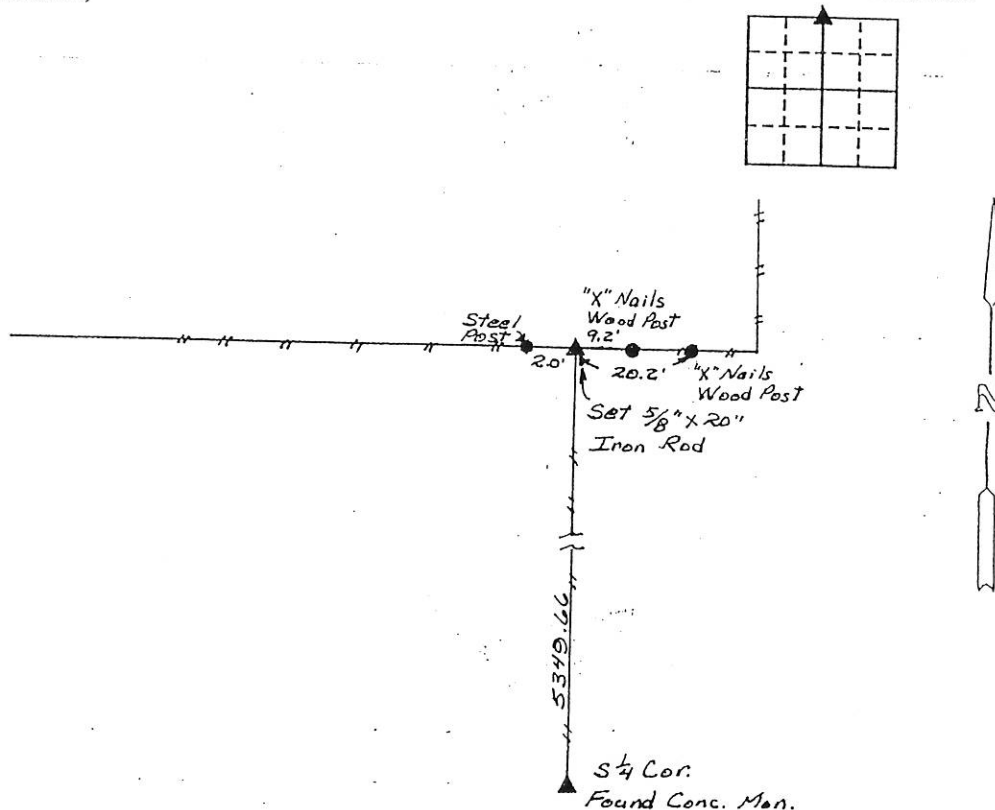
Land Survey Monuments situated in Section 15, Township 84N, Range 1E, of the Fifth Principal Meridian, Jackson County, Iowa.
 Previously recorded in nOne in County Recorder's Office.
 (book, page, document number, etc.)

(Show reason for preparing this certificate, the evidence and detailed procedures used in establishing the corner positions and monumentation found or placed.)

Monument Description and Remarks: The N $\frac{1}{4}$ Corner was set by running a straight line beginning at the S $\frac{1}{4}$ corner northerly along an existing fence line, through an established $\frac{1}{4}$ corner to an east-west fence line established by using a referenced NW corner set by Jackson County. Set 5/8" X 20" iron rod flush with the ground.

PLAN - VIEW

(Show a minimum of three reference ties to durable physical objects, relevant monuments and physical conditions that will enable recovery of the corner.)



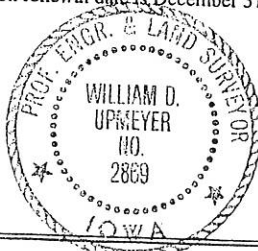
I hereby certify that the survey work was completed and this land surveying document was prepared by me or under my direct personal supervision and that I am a duly registered land surveyor under the laws of the state of Iowa

Signature: William D Upmeyer
 Name typed or printed: William D Upmeyer

Date: 11-20-95 Reg. No. 2869

My registration renewal date is December 31, 1995

SEAL



Corners	List Corners to be Indexed	Section	Twp	Range
N $\frac{1}{4}$	15	84N	1E	

FILE NO. 001392
 BOOK 1 PAGE 250

1995 NOV 21 PM 12:31

SHIRLEY RITCHOUR
 JACKSON COUNTY, IOWA
 RECORDER

Sub



Document 13-943

Book 3 Page 83 Type 15 001 Pages 1
Date 3/06/2013 Time 2:15 PM
Rec Amt \$7.00

ARLENE SCHAUF, RECORDER/REGISTRAR
JACKSON COUNTY IOWA

Prepared by Wm. Burger Land Surveyor 510 3rd Street West Court, Worthington, Iowa 52078 Phone 563 - 855 2028

UNITED STATES PUBLIC LAND SURVEY CORNER CERTIFICATE

Land Survey Monuments situated in Section 15, Township 84N, Range 1E, of the Fifth Principal Meridian, Jackson County, Iowa. Previously recorded in N/A in the Office of the County Recorder

Monument Description and Remarks: (No Corner Certificates found at the County Recorders Office)

NW CORNER - F.D. MAG. NAIL IN GRAVEL

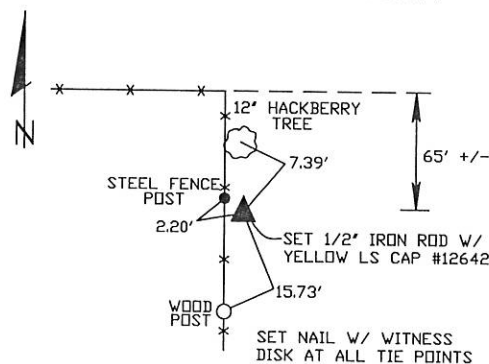
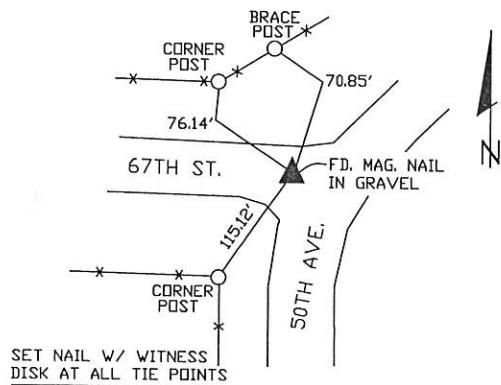
CENTER OF SECTION - SET 1/2" IRON ROD W/YELLOW LS CAP #12642 - RUN STRAIGHT LINES FROM OPPOSITE 1/4 CORNERS AND SET AT POINT OF INTERSECTION

W1/4 CORNER - SET CUT 'X' IN CONCRETE ROAD - SET ON LINE AND MIDWAY BETWEEN THE SW CORNER AND THE NW CORNER

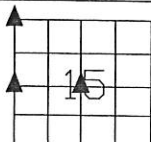
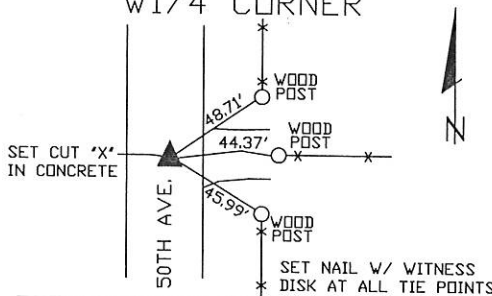
NW CORNER

PLAN VIEW

CENTER OF SECTION



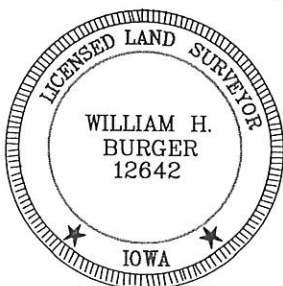
W1/4 CORNER



SEC. 15 TWP. 84N RANGE 1E

CORNERS TO BE INDEXED

NW CORNER	15	84N	1E
CENTER OF SECTION	15	84N	1E
W1/4 CORNER	15	84N	1E



I hereby certify that this land surveying document was prepared and related survey work was performed by me or under my direct personal supervision and that I am a duly licensed Land Surveyor under the laws of the State of Iowa.

William H. Burger 2/20/13
William H. Burger Date

License number 12642

My license renewal date is December 31, 2014

Pages or Sheets covered by this seal: Sheet 1 of 1