

FILE NO. 03-7115
BOOK 2 PAGE 215

PREPARED BY: EGGER ENGINEERING AND LAND SURVEYING, P.C.
2395 TECH DRIVE SUITE 2 BETTENDORF, IOWA 52722 563-332-6330

03 DEC 24 AM 7:54
PHYLLIS M. GERLACH
JACKSON COUNTY, IOWA
RECORDER

#11.00
Fee

UNITED STATES PUBLIC LAND SURVEY CORNER CERTIFICATE
OF

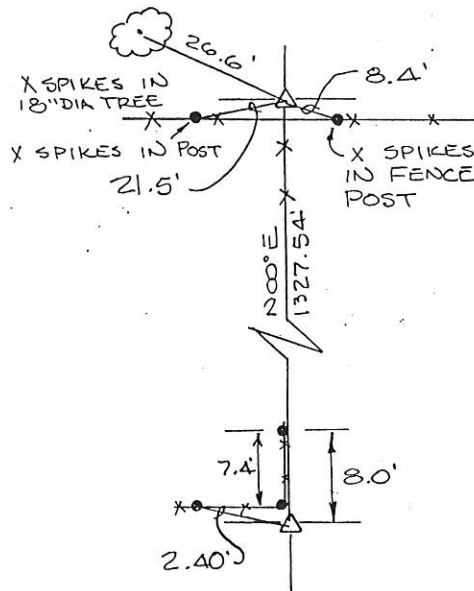
Land Survey Monuments situated in Section 13, Township 84N, Range 1E, of the Fifth Principal Meridian, JACKSON County, Iowa. Previously recorded in NOT RECORDED in County Recorder's Office.

(Show reason for preparing this certificate, the evidence and detailed procedures used in establishing the corner positions and monumentation found or placed.)

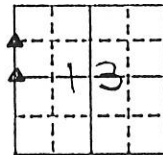
Monument Description and Remarks: BOTH CORNERS WERE ESTABLISHED BY INTERSECTING EXISTING FENCELINES

PLAN - VIEW

(Show a minimum of three reference ties to durable physical object, relevant monuments and physical conditions that will enable recovery of the corner.)



NW COR
SW 1/4 - NW 1/4
SET 5/8" ROD
WITH CAP 7983



WEST 1/4 COR.
SEC. 13
SET 5/8" IRON ROD
WITH CAP #7983

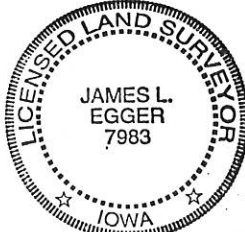


I hereby certify that the survey work was completed and this certificate was prepared by me or under my direct supervision and that I am a duly registered land surveyor under the laws of the state of Iowa.

Signature: James L. Egger
James L. Egger L.S.

Date: DEC. 5, 2003 Reg. No. 7983

SEAL



Corners	Section	Twp	Range
---------	---------	-----	-------

NW COR	13	84N	1E
SW 1/4 - NW 1/4			

W. 1/4 COR	13	84N	1E
------------	----	-----	----



Document 12-4578

Book 3 Page 69 Type 15 001 Pages 1
Date 10/29/2012 Time 2:12 PM
Rec Amt \$7.00

ARLENE SCHAUF, RECORDER/REGISTRAR
JACKSON COUNTY IOWA

PREPARED BY: MICHAEL J. WEBER, WEBER SURVEYING, LLC, 26789 46TH AVE, BERNARD, IA 52032 (563) 879-4173

UNITED STATES PUBLIC LAND SURVEY CORNER CERTIFICATE OF

LAND SURVEY MONUMENTS SITUATED IN SECTION 13, TOWNSHIP 84 NORTH, RANGE 1 EAST
OF THE FIFTH PRINCIPAL MERIDIAN, JACKSON COUNTY, IOWA.
PREVIOUSLY RECORDED NONE UNLESS OTHERWISE NOTED

(book, page, document number, etc.)

(Show reason for preparing this certificate, the evidence and detailed procedures used in establishing the corner positions and monumentation found or placed.)

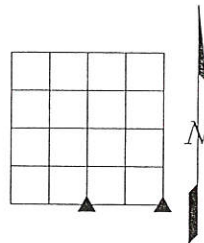
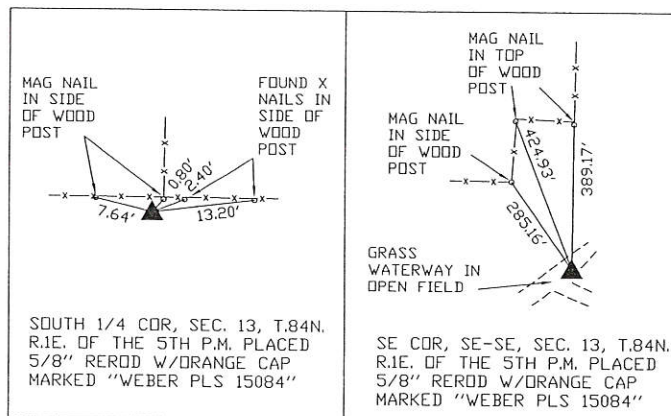
Monument Description and Remarks:

-SOUTH 1/4 COR, SEC. 13, T.84N. R.1E. OF THE 5TH P.M. PLACED 5/8" REROD W/ORANGE CAP MARKED "WEBER PLS 15084" NEXT TO FOUND STONE AS SHOWN AS THE NORTH 1/4 CORNER OF SECTION 24, T.84N. R.1E. IN THE IDOT SECTION CORNER TIES FOR STATE HWY NO. 64, IN THE JACKSON COUNTY ENGINEERS OFFICE.

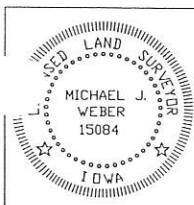
-SE COR, SE-SE, SEC. 13, T.84N. R.1E. OF THE 5TH P.M. PLACED 5/8" REROD W/ORANGE CAP MARKED "WEBER PLS 15084" ESTABLISHED CORNER USING THE IDOT SECTION CORNER TIES FOR STATE HWY NO. 64, IN THE JACKSON COUNTY ENGINEERS OFFICE AND THE PLAT OF SURVEY SHOWN IN DOC. NO. 09-1196.

(Show a minimum of three reference ties to durable physical objects, relevant monuments and physical conditions that will enable recovery of the corner.)

PLAN - VIEW



DWG. NO. 2008\DIETZ\NELSON



I HEREBY CERTIFY THAT THIS LAND SURVEYING DOCUMENT WAS PREPARED AND THE RELATED SURVEY WORK WAS PERFORMED BY ME OR UNDER MY DIRECT PERSONAL SUPERVISION AND THAT I AM A DULY LICENSED LAND SURVEYOR UNDER THE LAWS OF THE STATE OF IOWA.

Michael J. Weber *October 4, 2012*
MICHAEL J. WEBER (DATE)
LICENSE NUMBER 15084
MY LICENSE RENEWAL DATE IS DECEMBER 31, 2013

SHEETS COVERED BY THIS SEAL: THIS SHEET

List Corners to be Indexed

Corner	Sec	Twp	Range
S 1/4 COR	13	84N	1E
SE COR	13	84N	1E

