

UNITED STATES PUBLIC LAND SURVEY CORNER CERTIFICATE

OF

Land Survey Monuments situated in Section 8, Township 84N, Range 3E, of the Fifth Principal Meridian, Jackson County, Iowa.
Previously recorded in _____ in County Recorder's Office.

(book, page, document number, etc.)

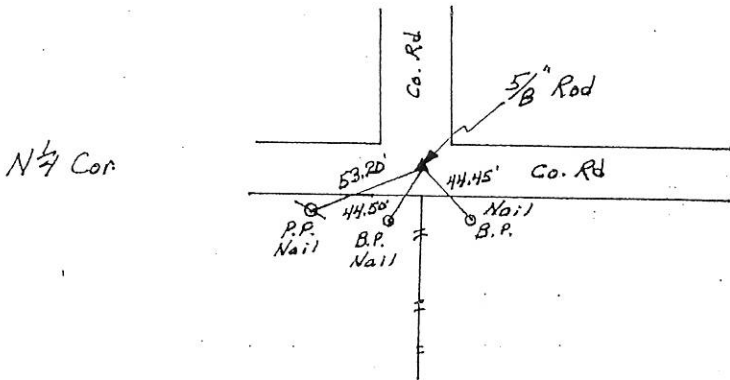
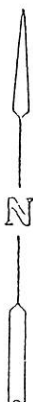
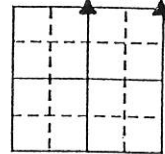
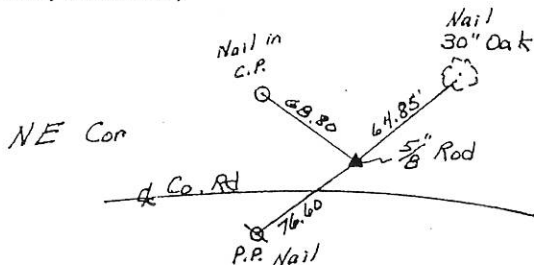
(Show reason for preparing this certificate, the evidence and detailed procedures used in establishing the corner positions and monumentation found or placed.)

Monument Description and Remarks: NE Corner - Set 5/8" iron rod from a recorded distance from the N 1/4 corner of Section 9 to the east and from existing ties and road plans of the relocated county road.

N 1/4 Corner - Set 5/8" iron rod after finding no evidence of existing corner. Used existing fence lines to ESTABLISH POSITION OF CORNER

PLAN - VIEW

(Show a minimum of three reference ties to durable physical objects, relevant monuments and physical conditions that will enable recovery of the corner.)



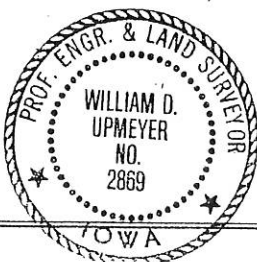
I hereby certify that the survey work was completed and this land surveying document was prepared by me or under my direct personal supervision and that I am a duly registered land surveyor under the laws of the state of Iowa

Signature: William D. Upmeyer
Name typed or printed: William D. Upmeyer

Date: 6-26-96 Reg. No. 2869

My registration renewal date is December 31, 1997

SEAL



Corners	List Corners to be Indexed	Section	Twp	Range
NE	8	84N	3E	
N 1/4	8	84N	3E	

FILE NO 003809
BOOK 1 PAGE 280

1996 JUL -3 PM 2:52

SHIRLY RITEHOUR
JACKSON COUNTY, IOWA
RECORDER

BOOK 1 PAGE 280

3-29-04 See Corner Certificate in Book 2 Page 242 as file # 04-1248

FILE NO. 04-1246
BOOK 2 PAGE 240

04 MAR 29 AM 7:11

PHYLLIS M. GERLACH
JACKSON COUNTY, IOWA
RECORDER Fee \$11.00

Prepared by: SCHNEIDER Land Surveying and Planning, Inc. P.O. Box 105 Peosta, Iowa 52068 563-556-9055

UNITED STATES PUBLIC LAND SURVEY CORNER CERTIFICATE OF

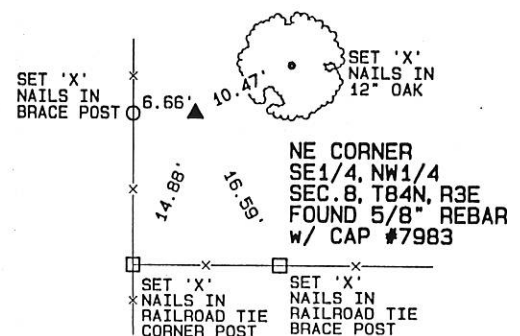
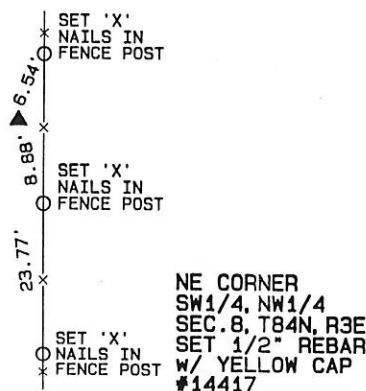
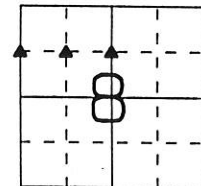
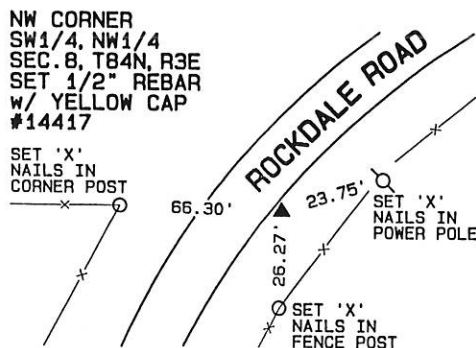
Land Survey Monuments situated in Section 8, Township 84 North, Range 3 East of the Fifth Principal Meridian, Jackson County, Iowa.
Previously recorded (NONE OF RECORD)

(Show reason for preparing this certificate, the evidence and detailed procedures used in establishing the corner positions and monumentation found or placed.)

Monument Description and Remarks: THE NW CORNER OF THE SW1/4 OF THE NW1/4 OF SEC. 8, T84N, R3E WAS ESTABLISHED ON A LINE FROM THE W1/4 CORNER TO THE NW CORNER OF SAID SECTION 8 AND BY USING AN OCCUPATION FENCE LOCATED TO THE WEST. THE NE CORNER OF THE SW1/4 OF THE NW1/4 OF SEC. 8, T84N, R3E WAS ESTABLISHED AT THE THEORETICAL CENTER OF THE NW1/4 OF SAID SECTION 8. THE NE CORNER OF THE SE1/4 OF THE NW1/4 OF SEC. 8, T84N, R3E WAS ESTABLISHED ON A LINE FROM THE N1/4 CORNER TO THE THEORETICAL CENTER OF SAID SECTION 8 AND BY USING OCCUPATION FENCES TO THE NORTH AND EAST.

PLAN - VIEW

(Show a minimum of three reference ties to durable physical objects, relevant monuments and physical conditions that will enable recovery of the corner.)



I hereby certify that this land surveying document was prepared and the related survey work was performed by me or under my direct personal supervision and that I am a duly licensed Land Surveyor under the laws of the State of Iowa.

David P. Schneider P.L.S. #14417 Date: 3/26/2005
My license renewal date is December 31, 2005.
Pages or sheets covered by this seal: THIS SHEET ONLY

SCHNEIDER
Land Surveying & Planning, Inc.
P.O. Box 105 Peosta, Iowa 52068
Ph. #563-556-9055 Fax #563-556-9054



List Corners to be Indexed

Corners	Section	Twp	Range
NW CORNER SW1/4, NW1/4	8	84N	3E
NE CORNER SW1/4, NW1/4	8	84N	3E
NE CORNER SE1/4, NW1/4	8	84N	3E



Document 09-4868

Book 2 Page 696 Type 15 001 Pages 1
Date 12/21/2009 Time 11:01 AM
Rec Amt \$9.00

ARLENE SCHAUF, RECORDER/REGISTRAR
JACKSON COUNTY IOWA

Prepared by: SCHNEIDER Land Surveying and Planning P.O. Box 128 Farley, Iowa 52046 563-744-3631

UNITED STATES PUBLIC LAND SURVEY CORNER CERTIFICATE OF

Land Survey Monuments situated in Section 8, Township 84 North, Range 3 East
of the Fifth Principal Meridian, Jackson County, Iowa.
Previously recorded _____ (NONE OF RECORD)

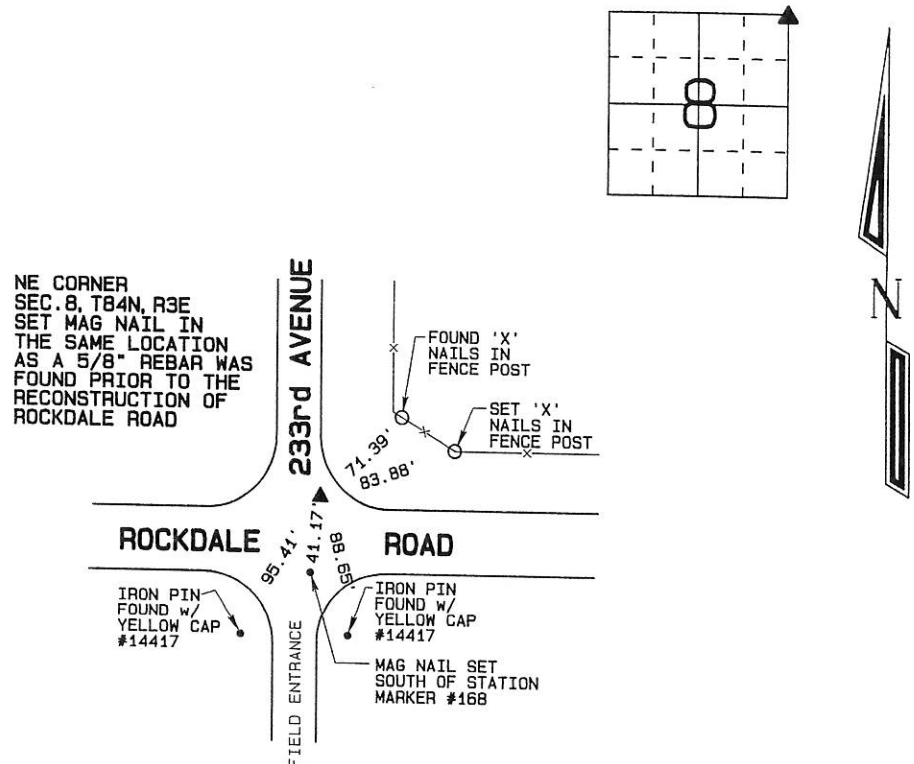
(Show reason for preparing this certificate, the evidence and detailed procedures used in establishing the corner positions and
monumentation found or placed.)

Monument Description and Remarks:

A MAG NAIL WAS PLACED AT THE NORTHEAST CORNER OF SECTION 8, T84N, R3E IN THE SAME LOCATION AS A 5/8" REBAR WAS
FOUND PRIOR TO THE RECONSTRUCTION OF ROCKDALE ROAD.

PLAN - VIEW

(Show a minimum of three reference ties to durable physical objects, relevant monuments and physical conditions that will
enable recovery of the corner.)



I hereby certify that this land surveying document was
prepared and the related survey work was performed by
me or under my direct personal supervision and that I
am a duly licensed Land Surveyor under the laws of the
State of Iowa.

David P. Schneider P.L.S. #14417

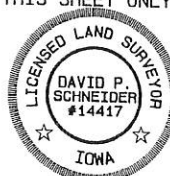
Date: 12/16/2009

My license renewal date is December 31, 2011.

Pages or sheets covered by this seal: THIS SHEET ONLY

SCHNEIDER
Land Surveying & Planning

P.O. Box 128 Farley, Iowa 52046
Ph. #563-744-3631 Fax #563-744-3629



List Corners to be Indexed

Corners	Section	Twp	Range
NE CORNER	8	84N	3E

Book 2 Page 696

JOB NO. 1368