

UNITED STATES PUBLIC LAND SURVEY CORNER CERTIFICATE

OF

Land Survey Monuments situated in Section 7, Township 84N, Range 3E, of the Fifth Principal Meridian, Jackson County, Iowa.
 Previously recorded in --- in County Recorder's Office.
 (book, page, document number, etc.)

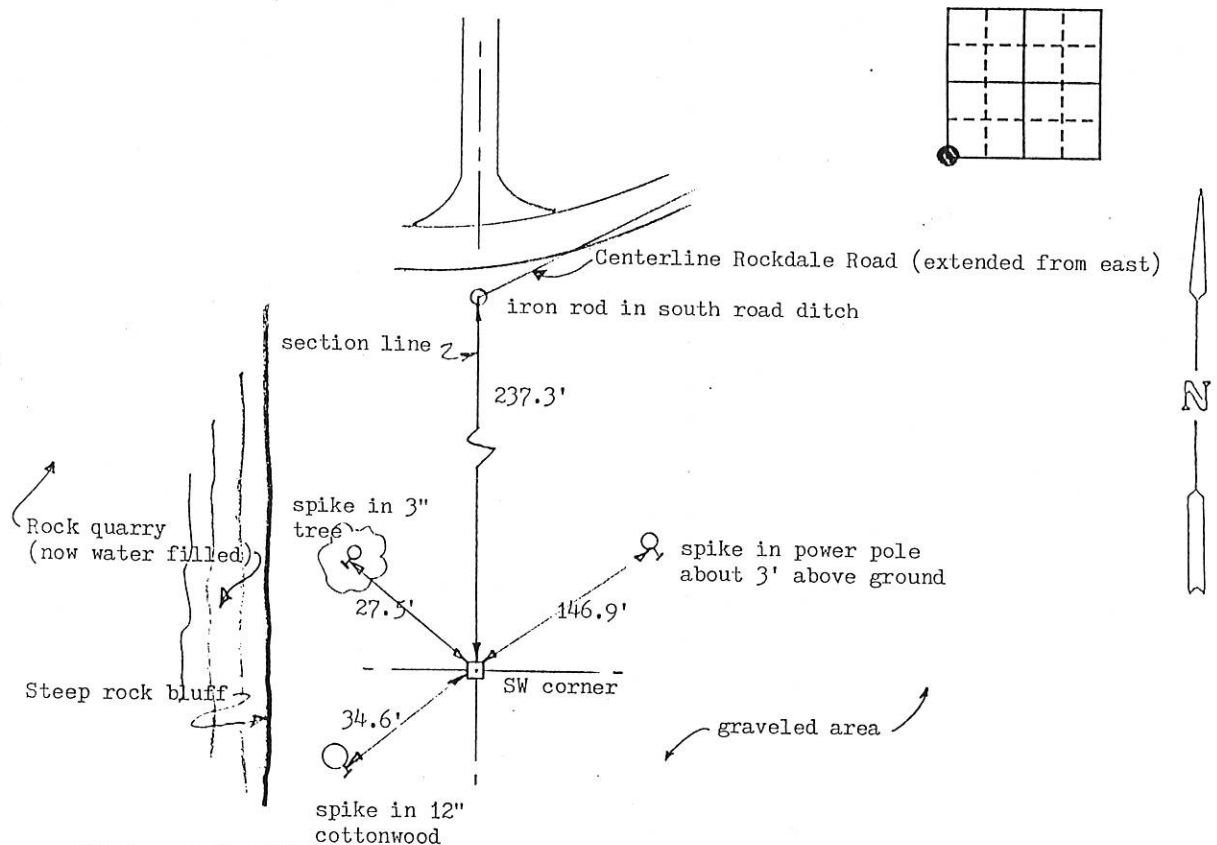
(Show reason for preparing this certificate, the evidence and detailed procedures used in establishing the corner positions and monumentation found or placed.)

Monument Description and Remarks:

For Owen survey. Found iron rod at location called for in survey plat recorded in Jackson County Recorder's Office in Book 1-C, Page 104. Accepted same.
 Monument is near edge of rock quarry in graveled area subject to truck traffic.

PLAN - VIEW

(Show a minimum of three reference ties to durable physical objects, relevant monuments and physical conditions that will enable recovery of the corner.)



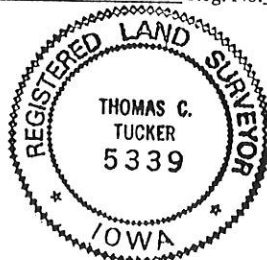
I hereby certify that the survey work was completed and this certificate was prepared by me or under my direct personal supervision and that I am a duly registered land surveyor under the laws of the state of Iowa.

Signature: Thomas C. Tucker

Name typed or printed: Thomas C. Tucker

Date: 3/23/92 Reg. No. 5339

SEAL



Corners	Section	Twp	Range
SW	7	84N	3E

FILE NO. 2419
 BOOK 1 PAGE 80

1992 APR 9 AM 8:37

SHIRLY RITENOUR
 JACKSON COUNTY, IOWA
 RECORDER

See 15.00

BOOK 1 PAGE 80

UNITED STATES PUBLIC LAND SURVEY CORNER CERTIFICATE

OF

Land Survey Monuments situated in Section 7, Township 84N, Range 4E, of the Fifth Principal Meridian, JACKSON County, Iowa, usly recorded in NOT APPLICABLE in County Recorder's Office.

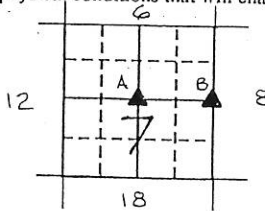
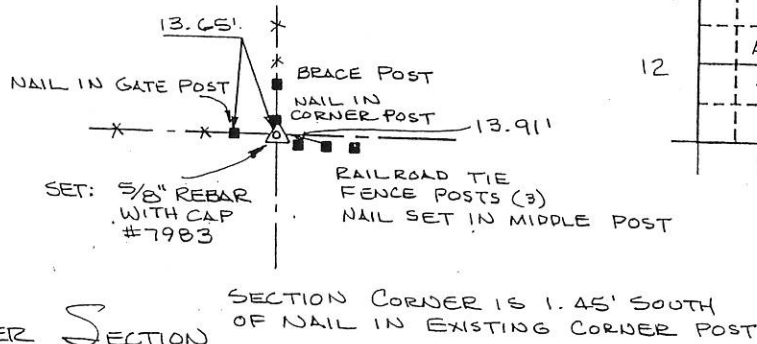
(book, page, document number, etc.)

(Show reason for preparing this certificate, the evidence and detailed procedures used in establishing the corner positions and monumentation found or placed.)

Monument Description and Remarks: NO EVIDENCE WAS FOUND AT EITHER
CORNER LOCATION OF AN EXISTING STONE OR IRON CORNER STAKE.
CENTER SECTION WAS SET AT THE INTERSECTION OF A FENCE TO THE NORTH
WITH A FENCE TO THE WEST. E 1/4 CORNER WAS SET

PLAN - VIEW

(Show a minimum of three reference ties to durable physical objects, relevant monuments and physical conditions that will enable recovery of the corner.)



EAST 1/4 CORNER

FILE NO. 005420
 BOOK 1 PAGE 296
 1996 DEC 16 AM 9:44
 SHIRLEY RITENOUR
 JACKSON COUNTY, IOWA
 RECORDER

3-19-97 Curved Certificate Book 1 Page 308

I hereby certify that the survey work was completed and this certificate was prepared by me or under my direct personal supervision and that I am a duly registered land surveyor under the laws of the state of Iowa.

Signature: James L. Egger
 Name typed or printed: JAMES L. EGGER P.E. & L.S.
 Date: DEC. 10, 1996 Reg. No. 7983



SEAL

Corners	List Corners to be Indexed	Section	Twp	Range
CENTER	7	84N	4E	
E 1/4	7	84N	4E	
W 1/4	8	84N	4E	

UNITED STATES PUBLIC LAND SURVEY CORNER CERTIFICATE

OF

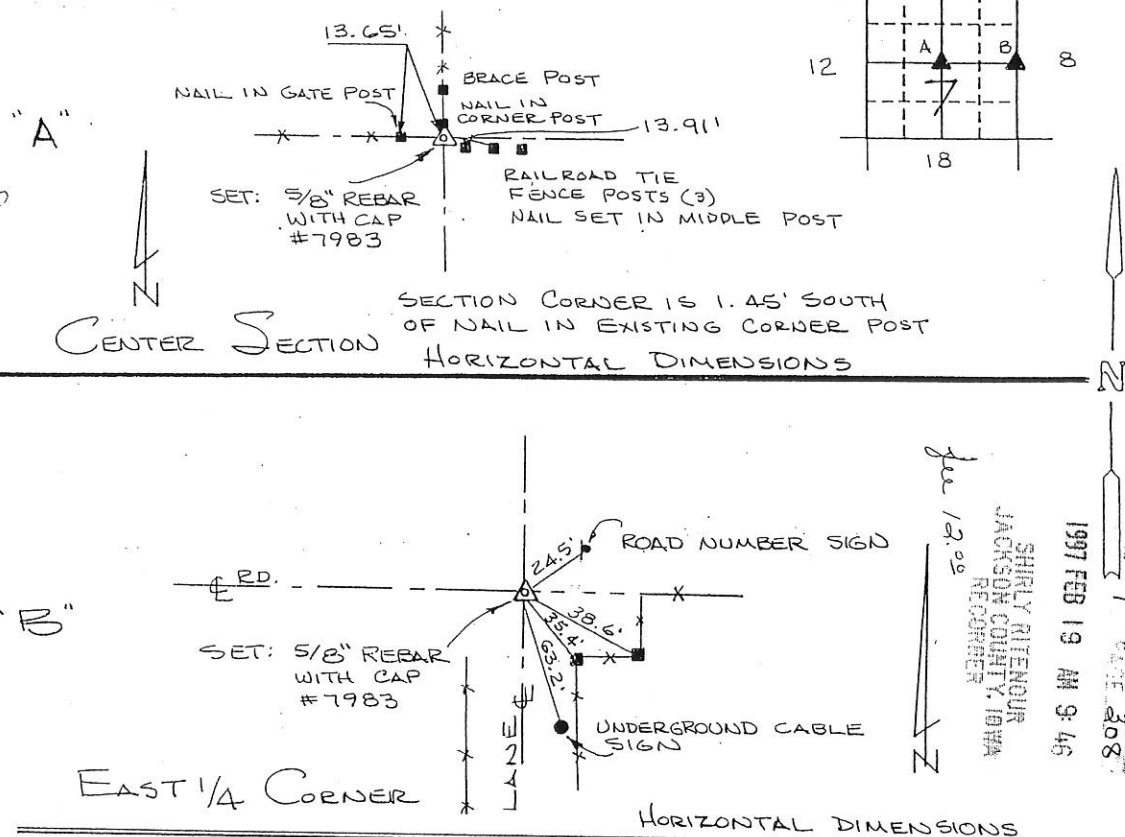
Land Survey Monuments situated in Section 7, Township 84N, Range 3E, of the Fifth Principal Meridian, JACKSON County, Iowa.
 Previously recorded in FILE # 005420; BOOK 1, PAGE 296 in County Recorder's Office.

(Show reason for preparing this certificate, the evidence and detailed procedures used in establishing the corner positions and monumentation found or placed.)

Monument Description and Remarks: NO EVIDENCE WAS FOUND AT EITHER CORNER LOCATION OF AN EXISTING STONE OR IRON CORNER STAKE
CENTER SECTION WAS SET AT THE INTERSECTION OF A FENCE TO THE NORTH
WITH A FENCE TO THE WEST. E 1/4 CORNER WAS SET ON THE INTER-
SECTION OF A FENCELINE TO THE EAST, WITH THE CENTERLINE
OF A LANE TO THE SOUTH.

PLAN - VIEW

(Show a minimum of three reference ties to durable physical objects, relevant monuments and physical conditions that will enable recovery of the corner.)



I hereby certify that the survey work was completed and this certificate was prepared by me or under my direct personal supervision and that I am a duly registered land surveyor under the laws of the state of Iowa.

Signature: James L. Egger
 Name typed or printed: JAMES L. EGGER P.E. & L.S.

Date: FEB. 17, 1997 Reg. No. 7983



SEAL

HORIZONTAL DIMENSIONS

Corners	List Corners to be Indexed	Section	Twp	Range
CENTER	7	84N	3E	
E 1/4	7	84N	3E	
W 1/4	8	84N	3E	

3-24-04 Acc Corner Certificate in Book 2 Page 241 as file # 04-1247

FILE NO 97 405
 1997 FEB 19 AM 9:46
 SHIRLEY RITENOUR
 JACKSON COUNTY, IOWA
 RECORDER
 fee 12.00

UNITED STATES PUBLIC LAND SURVEY CORNER CERTIFICATE

OF

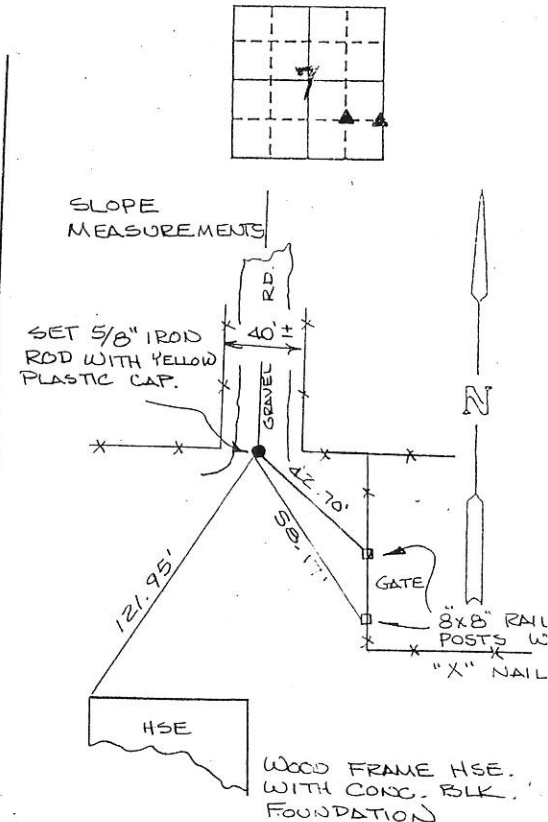
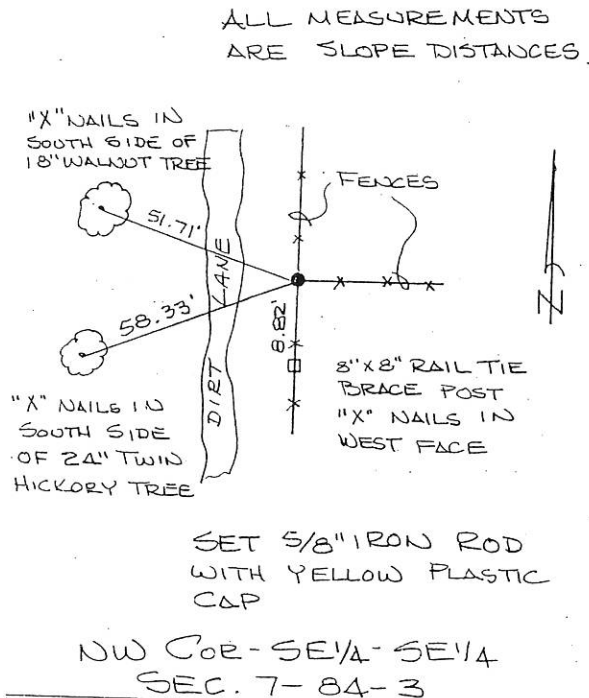
Land Survey Monuments situated in Section 7, Township 84 N, Range 3 EAST, of the Fifth Principal Meridian, JACKSON County, Iowa.
 Previously recorded in NONE in County Recorder's Office.
 (book, page, document number, etc.)

(Show reason for preparing this certificate, the evidence and detailed procedures used in establishing the corner positions and monumentation found or placed.)

Monument Description and Remarks: THE TWO CORNERS WE SET WERE LAND BOUNDARY CORNERS, BUT THE IOWA BOARD OF ENGINEERING AND LAND SURVEYING EXAMINERS VOTED TO CALL THE TWO POINTS QUARTER-QUARTER CORNERS, AN OPINION NOT SHARED BY THIS SURVEYOR, BUT NONE THE LESS CONCEDED TO IN A DECISION RENDERED BY THE BOARD DATED AUG. 12, 199

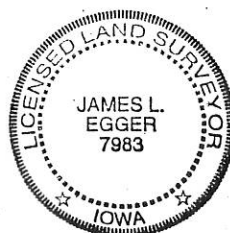
PLAN - VIEW

(Show a minimum of three reference ties to durable physical objects, relevant monuments and physical conditions that will enable recovery of the corner.)



I hereby certify that the survey work was completed and this certificate was prepared by me or under my direct personal supervision and that I am a duly registered land surveyor under the laws of the state of Iowa.

Signature: James L. Egger
 Name typed or printed: JAMES L. EGGER
 Date: Nov. 3, 1999 Reg. No. 7983



SEAL

List Corners to be Indexed
 Corners Section Twp Range

NE Cor SE 1/4 - SE 1/4 Sec 7-84-
 NW Cor SE 1/4 - SE 1/4 Sec. 7-84-

99 NOV - 9 AM 10:48
 PHYLIS M. BERLACH
 JACKSON COUNTY, IOWA
 RECORDER

FILE NO. 99-4383
 PAGE 358

3-29-04 See Corner Certificate in Book 2 Page 241 as file # 04-1247

FILE NO. 03-3656
BOOK 2 PAGE 167

03 JUN 19 AM 9:51

PHYLLIS M. GERLACH
JACKSON COUNTY, IOWA
RECORDER
Fee \$6.00

Prepared by: SCHNEIDER Land Surveying and Planning, Inc. P.O. Box 105 Peosta, Iowa 52068 563-556-9055

UNITED STATES PUBLIC LAND SURVEY CORNER CERTIFICATE OF

Land Survey Monuments situated in Section 7, Township 84 North, Range 3 East
of the Fifth Principal Meridian, Jackson County, Iowa.
Previously recorded (NONE OF RECORD)

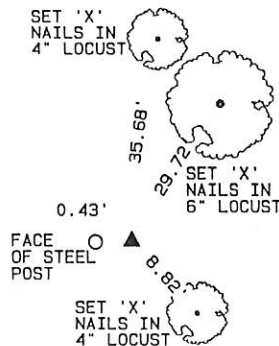
(Show reason for preparing this certificate, the evidence and detailed procedures used in establishing the corner positions and monumentation found or placed.)

Monument Description and Remarks: A 1/2" REBAR w CAP #10135 WAS FOUND AT THE SW CORNER OF THE NW FRL 1/4 OF THE NW FRL 1/4 OF SECTION 7, T84N, R3W. THE PIN WAS TIED AND USED AS THE CORNER.

THE SE CORNER OF THE NW1/4 OF THE NE1/4 OF SEC. 7, T84N, R3E WAS ESTABLISHED AT THE INTERSECTION OF OCCUPATION FENCES LOCATED NORTH, SOUTH, EAST AND WEST OF THE CORNER. THE SW CORNER OF THE NW 1/4 OF THE NE1/4 OF SEC. 7, T84N, R3W WAS RE-ESTABLISHED BY INTERSECTION THE SOUTH LINE OF A PARCEL ILLUSTRATED ON A PLAT OF SURVEY FILED IN BOOK 1-6, PAGE 47 WITH A LINE PROJECTED FROM THE CENTER OF SAID SECTION 7 THROUGH THE FENCE INTERSECTION AT THE SW CORNER OF THE NW1/4 OF THE NE1/4 OF SAID SECTION 7.

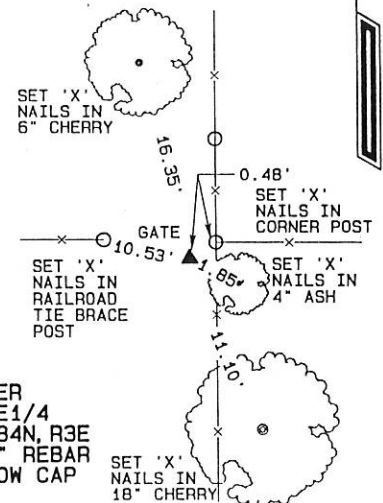
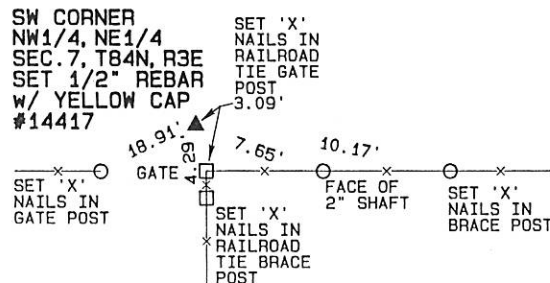
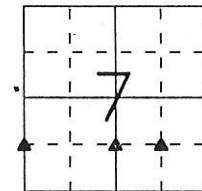
PLAN - VIEW

(Show a minimum of three reference ties to durable physical objects, relevant monuments and physical conditions that will enable recovery of the corner.)



200th AVE.

SW CORNER
NW FRL 1/4,
NW FRL 1/4
SEC. 7, T84N, R3W
FOUND 1/2" REBAR
w/ CAP #10135



SE CORNER
NW1/4, NE1/4
SEC. 7, T84N, R3E
SET 1/2" REBAR
w/ YELLOW CAP
#14417

I hereby certify that this land surveying document was prepared and the related survey work was performed by me or under my direct personal supervision and that I am a duly licensed Land Surveyor under the laws of the State of Iowa.

David P. Schneider 6/19/2003
David P. Schneider P.L.S. #14417 Date:
My license renewal date is December 31, 2003.

Pages or sheets covered by this seal: THIS SHEET ONLY

SCHNEIDER
Land Surveying & Planning, Inc.
P.O. Box 105 Peosta, Iowa 52068
Ph. #563-556-9055 Fax#563-556-9054



List Corners to be Indexed

Corners	Section	Twp	Range
SW CORNER NW FRL 1/4, NW FRL 1/4	7	84N	3E
SW CORNER NW1/4, NE1/4	7	84N	3E
SE CORNER NW1/4, NE1/4	7	84N	3E

FILE NO. 03-9657
BOOK 2 PAGE 168

03 JUN 19 AM 9:51

PHYLLIS M. GERLACH
JACKSON COUNTY, IOWA
RECORDER Fee 6.00

Prepared by: SCHNEIDER Land Surveying and Planning, Inc. P.O. Box 105 Peosta, Iowa 52068 563-556-9055

UNITED STATES PUBLIC LAND SURVEY CORNER CERTIFICATE OF

Land Survey Monuments situated in Section 7, Township 84 North, Range 3 East of the Fifth Principal Meridian, Jackson County, Iowa.
Previously recorded (NONE OF RECORD)

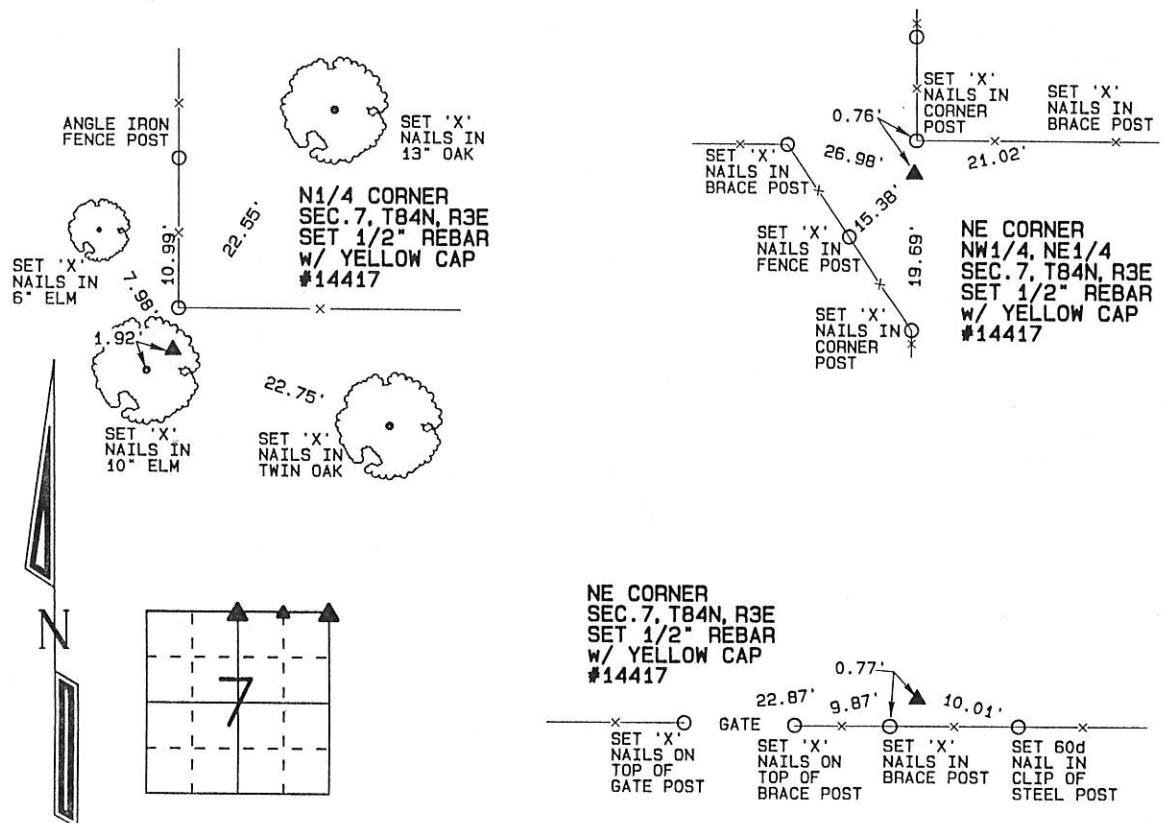
(Show reason for preparing this certificate, the evidence and detailed procedures used in establishing the corner positions and monumentation found or placed.)

Monument Description and Remarks: THE N1/4 CORNER OF SEC. 7, T84N, R3E WAS RE-ESTABLISHED AT THE BASE OF RUSTED OFF ANGLE IRON CORNER POST. THE NE CORNER OF THE NW1/4 OF THE NE1/4 OF SEC. 7, T84N, R3E WAS ESTABLISHED AT THE INTERSECTION OF OCCUPATION FENCES NORTH, SOUTH, EAST AND WEST OF THE CORNER.

THE NE CORNER OF SEC. 7, T84N, R3E WAS RE-ESTABLISHED BY DOUBLING THE DISTANCE FROM THE N1/4 CORNER OF SECTION 7 THROUGH THE NE CORNER OF THE NW1/4 OF THE NE1/4 OF SECTION 7 AND PLACED IN THE EAST-WEST OCCUPATION FENCE.

PLAN - VIEW

(Show a minimum of three reference ties to durable physical objects, relevant monuments and physical conditions that will enable recovery of the corner.)



I hereby certify that this land surveying document was prepared and the related survey work was performed by me or under my direct personal supervision and that I am a duly licensed Land Surveyor under the laws of the State of Iowa.

David P. Schneider 6/19/2003
David P. Schneider P.L.S. #14417 Date: 6/19/2003
My license renewal date is December 31, 2003.

Pages or sheets covered by this seal: THIS SHEET ONLY

SCHNEIDER
Land Surveying & Planning, Inc.
P.O. Box 105 Peosta, Iowa 52068
Ph. #563-556-9055 Fax #563-556-9054



List Corners to be Indexed

Corners	Section	Twp	Range
N1/4	7	84N	3E
NE CORNER NW1/4, NE1/4	7	84N	3E
NE CORNER	7	84N	3E

FILE NO. 04-1247
BOOK 2 PAGE 241

04 MAR 29 AM 7:11

PHYLLIS M. GERLACH
JACKSON COUNTY, IOWA
RECORDER Fee \$11.00

Prepared by: SCHNEIDER Land Surveying and Planning, Inc. P.O. Box 105 Peosta, Iowa 52068 563-556-9055

UNITED STATES PUBLIC LAND SURVEY CORNER CERTIFICATE OF

Land Survey Monuments situated in Section 7, Township 84 North, Range 3 East of the Fifth Principal Meridian, Jackson County, Iowa.

Previously recorded CENTER - S.C.C. BOOK 1, PAGE 308, SE CORNER OF NW1/4, SE1/4 - S.C.C. BOOK 1, PAGE 398.
(BOOK, PAGE / INST. NO. / CABINET, SLIDE)

(Show reason for preparing this certificate, the evidence and detailed procedures used in establishing the corner positions and monumentation found or placed.)

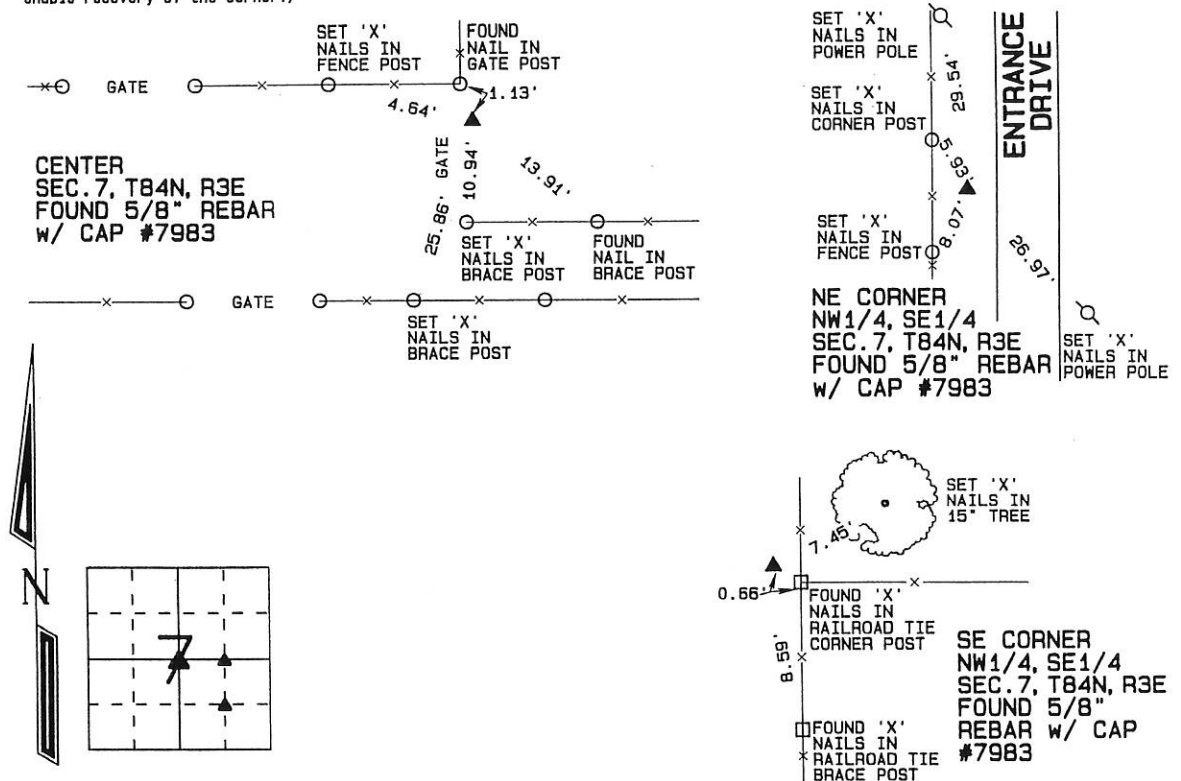
Monument Description and Remarks: A 5/8" REBAR WITH CAP #7983 WAS FOUND AT THE CENTER OF SEC. 7, T84N, R3E AS ILLUSTRATED IN SECTION CORNER CERTIFICATE FILED IN S.C.C. BOOK 1, PAGE 308. THE CORNER WAS REFILED TO ILLUSTRATE ADDITIONAL TIES.

THE NE CORNER OF THE NW1/4 OF THE SE1/4 OF SEC. 7, T84N, R3E WAS ESTABLISHED AT THE MIDPOINT OF A LINE FROM THE CENTER TO THE E1/4 CORNER OF SAID SECTION 7.

A 5/8" REBAR WITH CAP #7983 WAS FOUND AT THE SE CORNER OF THE NW1/4 OF THE SE1/4 OF SEC. 7, T84N, R3E AS ILLUSTRATED IN SECTION CORNER CERTIFICATE FILED IN S.C.C. BOOK 1, PAGE 398. THE CERTIFICATE WAS FILED TO ILLUSTRATE ADDITIONAL TIES WHICH WERE ADDED.

PLAN - VIEW

(Show a minimum of three reference ties to durable physical objects, relevant monuments and physical conditions that will enable recovery of the corner.)



I hereby certify that this land surveying document was prepared and the related survey work was performed by me or under my direct personal supervision and that I am a duly licensed Land Surveyor under the laws of the State of Iowa.

David P. Schneider P.L.S. #14417

Date: 3/26/2004

My license renewal date is December 31, 2005.

Pages or sheets covered by this seal: THIS SHEET ONLY

SCHNEIDER
Land Surveying & Planning, Inc.
P.O. Box 105 Peosta, Iowa 52068
Ph. #563-556-9055 Fax#563-556-9054



List Corners to be Indexed

Corners	Section	Twp	Range
CENTER	7	84N	3E
NE CORNER NW1/4, SE1/4	7	84N	3E
SE CORNER NW1/4, SE1/4	7	84N	3E

JOB NO. 597

Book 2 Page 241

FILE NO. 04-1249
BOOK 2 PAGE 243

04 MAR 29 AM 7:11

PHYLLIS M. GERLACH
JACKSON COUNTY, IOWA
RECORDER Fee \$ 11.00

Prepared by: SCHNEIDER Land Surveying and Planning, Inc. P.O. Box 105 Peosta, Iowa 52068 563-556-9055

UNITED STATES PUBLIC LAND SURVEY CORNER CERTIFICATE OF

Land Survey Monuments situated in Section 7, Township 84 North, Range 3 East
of the Fifth Principal Meridian, Jackson County, Iowa.
Previously recorded SW CORNER; BOOK 1, PAGES 119 AND 120

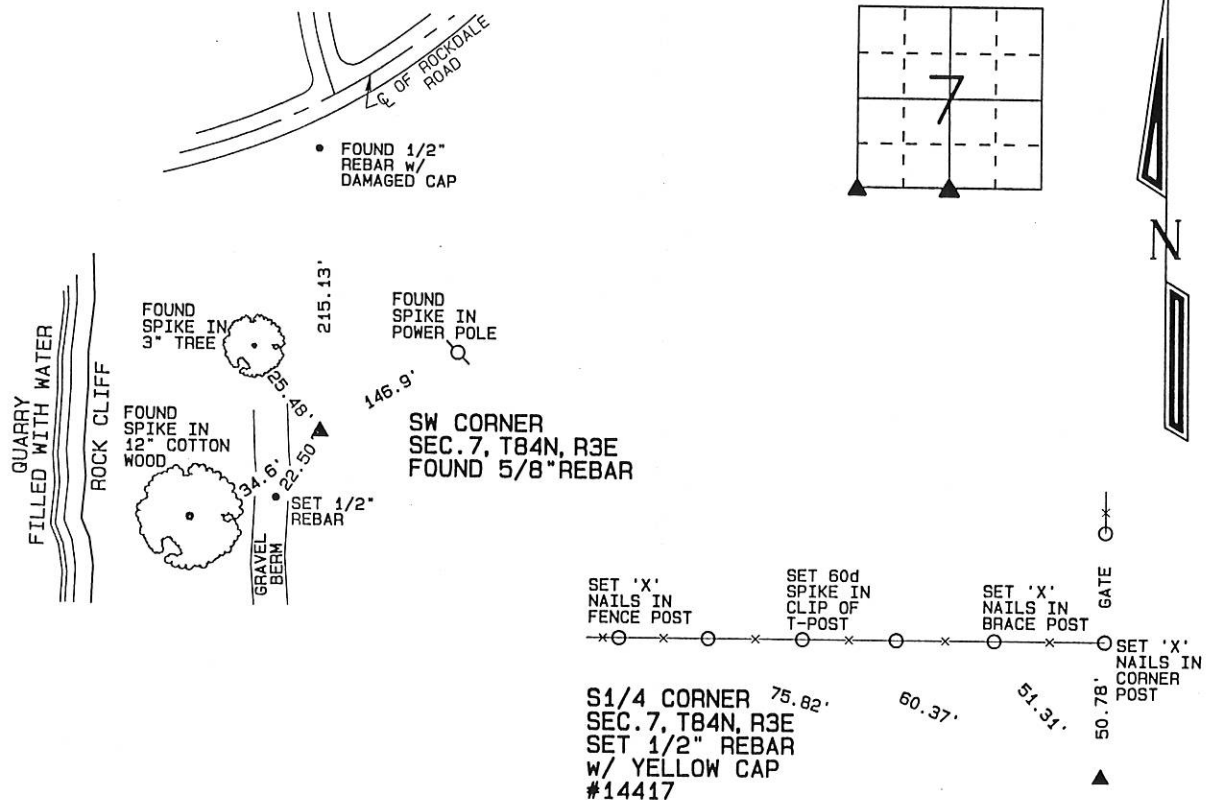
(Show reason for preparing this certificate, the evidence and detailed procedures used in establishing the corner positions and monumentation found or placed.)

Monument Description and Remarks: A 5/8" REBAR WAS FOUND AT THE SW CORNER OF SEC. 7, T84N, R3E AS
INDICATED ON THE SECTION CORNER CERTIFICATE FILED IN S.C.C. BOOK 1 AT PAGES 119 AND 120. THE CORNER WAS REFILED
BECAUSE MORE TIES WERE ADDED.

THE S1/4 CORNER OF SEC. 7, T84N, R3E WAS ESTABLISHED ON LINE FROM THE SE CORNER TO THE SW CORNER OF SAID SECTION 7
AND IN LINE WITH AN OCCUPATION FENCE LOCATED NORTH OF THE CORNER.

PLAN - VIEW

(Show a minimum of three reference ties to durable physical objects, relevant monuments and physical conditions that will enable recovery of the corner.)



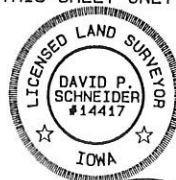
I hereby certify that this land surveying document was prepared and the related survey work was performed by me or under my direct personal supervision and that I am a duly licensed Land Surveyor under the laws of the State of Iowa.

David P. Schneider 3/26/2004
David P. Schneider P.L.S. #14417 Date:
My license renewal date is December 31, 2005.

Pages or sheets covered by this seal: THIS SHEET ONLY

SCHNEIDER
Land Surveying & Planning, Inc.

P.O. Box 105 Peosta, Iowa 52068
Ph. #563-556-9055 Fax #563-556-9054



List Corners to be Indexed

Corners	Section	Twp	Range
SW	7	84N	3E
S1/4	7	84N	3E

JOB NO. 597

FILE NO. 04-1253
BOOK 2 PAGE 247

04 MAR 29 AM 7:12

PHYLLIS M. GERLACH
JACKSON COUNTY, IOWA
RECORDER

Prepared by: SCHNEIDER Land Surveying and Planning, Inc. P.O. Box 105 Peosta, Iowa 52068 563-556-9055

UNITED STATES PUBLIC LAND SURVEY CORNER CERTIFICATE OF

Land Survey Monuments situated in Section 7, Township 84 North, Range 3 East
of the Fifth Principal Meridian, Jackson County, Iowa.

Previously recorded SCC BOOK 2, PAGE 167 (ALL)

(Show reason for preparing this certificate, the evidence and detailed procedures used in establishing the corner positions and monumentation found or placed.)

Monument Description and Remarks: A 1/2" REBAR w/CAP #10135 WAS FOUND AT THE SW CORNER OF THE NW FRL 1/4 OF THE NW FRL 1/4 OF SECTION 7, T84N, R3W. THE PIN WAS TIED AND USED AS THE CORNER.

THE SE CORNER OF THE NW1/4 OF THE NE1/4 OF SEC. 7, T84N, R3E WAS ESTABLISHED AT THE INTERSECTION OF

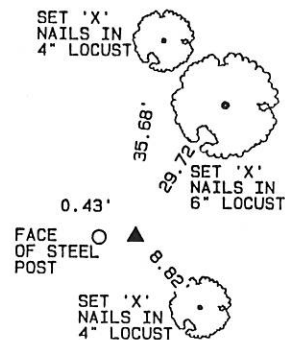
OCCUPATION FENCES LOCATED NORTH, SOUTH, EAST AND WEST OF THE CORNER. THE SW CORNER OF THE NW 1/4 OF THE NE1/4

OF SEC. 7, T84N, R3W WAS RE-ESTABLISHED BY INTERSECTION THE SOUTH LINE OF A PARCEL ILLUSTRATED ON A PLAT OF SURVEY FILED IN BOOK 1-G, PAGE 47 WITH A LINE PROJECTED FROM THE CENTER OF SAID SECTION 7 THROUGH THE FENCE

INTERSECTION AT THE SW CORNER OF THE NW1/4 OF THE NE1/4 OF SAID SECTION 7.

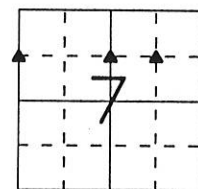
PLAN - VIEW

(Show a minimum of three reference ties to durable physical objects, relevant monuments and physical conditions that will enable recovery of the corner.)



200th AVE.

SW CORNER
NW FRL 1/4,
NW FRL 1/4
SEC. 7, T84N, R3W
FOUND 1/2" REBAR
w/ CAP #10135



SW CORNER
NW1/4, NE1/4
SEC. 7, T84N, R3E
SET 1/2" REBAR
w/ YELLOW CAP
#14417



SE CORNER
NW1/4, NE1/4
SEC. 7, T84N, R3E
SET 1/2" REBAR
w/ YELLOW CAP
#14417

SET 'X' NAILS IN
18" CHERRY

I hereby certify that this land surveying document was prepared and the related survey work was performed by me or under my direct personal supervision and that I am a duly licensed Land Surveyor under the laws of the State of Iowa.

David P. Schneider 3/26/2004
David P. Schneider P.L.S. #14417 Date:
My license renewal date is December 31, 2005.

Pages or sheets covered by this seal: THIS SHEET ONLY

SCHNEIDER
Land Surveying & Planning, Inc.

P.O. Box 105 Peosta, Iowa 52068
Ph. #563-556-9055 Fax#563-556-9054



List Corners to be Indexed

Corners	Section	Twp	Range
SW CORNER NW FRL 1/4, NW FRL 1/4	7	84N	3E
SW CORNER NW1/4, NE1/4	7	84N	3E
SE CORNER NW1/4, NE1/4	7	84N	3E

JOB NO. 186

Book 2 Page 247



Document 16-820

Book 2016 Page 820 Type 15 001 Pages 1
Date 3/15/2016 Time 10:46 AM
Rec Amt \$7.00

ARLENE SCHAUF, RECORDER/REGISTRAR
JACKSON COUNTY IOWA

Prepared by: SCHNEIDER Land Surveying and Planning, Inc. P.O. Box 128 Farley, Iowa 52046 563-744-3631

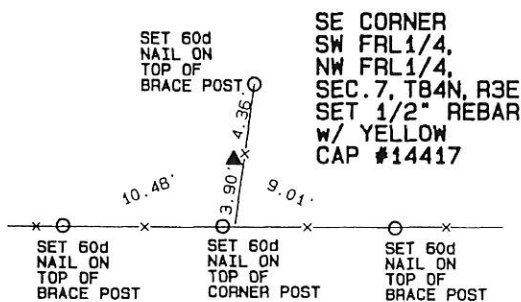
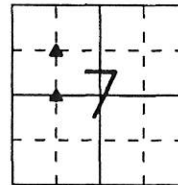
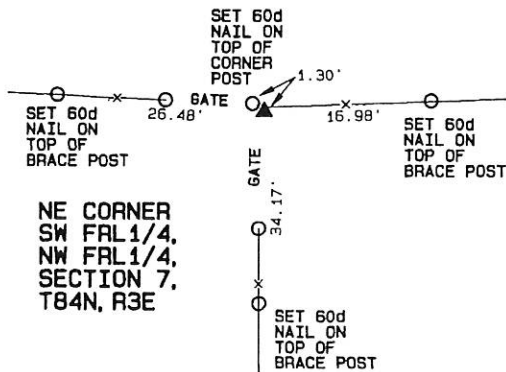
UNITED STATES PUBLIC LAND SURVEY CORNER CERTIFICATE OF

Land Survey Monuments situated in Section 7, Township 84 North, Range 3 East
of the Fifth Principal Meridian, Jackson County, Iowa.
Previously recorded (NONE OF RECORD)

BOOK, PAGE / DIST. NO. / CABINET, SLIDE

Monument Description and Remarks: THE NE CORNER OF THE SW FRL1/4 OF THE NW FRL1/4 OF SECTION 7,
T84N, R3E WAS ESTABLISHED USING EXISTING OCCUPATION EVIDENCE LOCATED SOUTH AND EAST AS WELL AS IN LINE WITH
THE SOUTH LINE OF A PARCEL OF LAND ILLUSTRATED ON A PLAT OF SURVEY FILED IN BOOK 1-G, PAGE 47 LOCATED TO THE
WEST AND NORTH. THE SE CORNER OF THE SW FRL1/4 OF THE NW FRL1/4 OF SECTION 7, T84N, R3E WAS ESTABLISHED ON
A LINE FROM THE W1/4 CORNER TO THE CENTER OF SAID SECTION 7 AND IN LINE WITH EXISTING OCCUPATION FENCES NORTH
OF THE CORNER.

PLAN - VIEW



I hereby certify that this land surveying document was prepared and the related survey work was performed by me or under my direct personal supervision and that I am a duly licensed Land Surveyor under the laws of the State of Iowa.

David P. Schneider P.L.S. #14417 Date: 3/10/2016
My license renewal date is December 31, 2017.
Pages or sheets covered by this seal: THIS SHEET ONLY

SCHNEIDER
Land Surveying & Planning, Inc.

P.O. Box 128 Farley, Iowa 52046
Ph. #563-744-3631 Fax#563-744-3629



List Corners to be Indexed

Corners	Section	Twp	Range
NE CORNER	7	84N	3E
SW FRL1/4,			
NW FRL1/4,			
SE CORNER	7	84N	3E
SW FRL1/4,			
NW FRL1/4			

JOB NO. 1884