

FILE NO. **03-3658**
BOOK **2** PAGE **169**

03 JUN 19 AM 9:52

PHYLLIS M. GERLACH
JACKSON COUNTY, IOWA
RECORDER **6.00**
Fee **6.00**

Prepared by: SCHNEIDER Land Surveying and Planning, Inc. P.O. Box 105 Peosta, Iowa 52068 563-556-9055

UNITED STATES PUBLIC LAND SURVEY CORNER CERTIFICATE OF

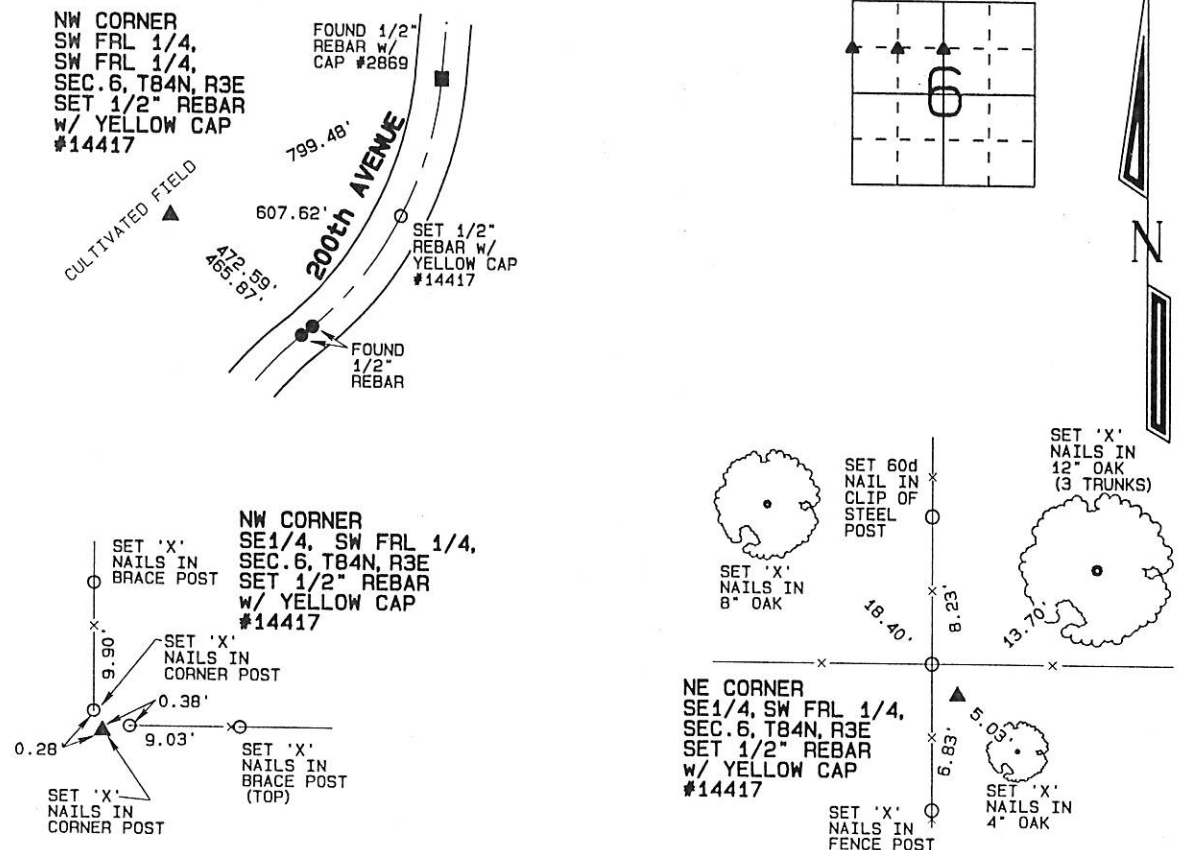
Land Survey Monuments situated in Section 6, Township 84 North, Range 3 East of the Fifth Principal Meridian, Jackson County, Iowa.
Previously recorded (NONE OF RECORD)

(Show reason for preparing this certificate, the evidence and detailed procedures used in establishing the corner positions and monumentation found or placed.)

Monument Description and Remarks: THE NW CORNER OF THE SW FRL 1/4 OF THE SW FRL 1/4 OF SECTION 6, T84N, R3E WAS ESTABLISHED AT THE MIDPOINT OF A LINE FROM THE W1/4 CORNER TO THE NW CORNER OF SAID SECTION 6.
THE NE CORNER OF SE1/4 OF THE SW FRL 1/4 OF SEC.6, T84N, R3E WAS PLACED AT THE INTERSECTION OF OCCUPATION FENCES LOCATED NORTH, SOUTH, EAST AND WEST OF THE CORNER.
THE NW CORNER OF THE SE1/4 OF THE SW FRL 1/4 OF SEC.6, T84N, R3E WAS PLACED AT THE INTERSECTION OF OCCUPATION FENCES LOCATED NORTH AND EAST OF THE CORNER.

PLAN - VIEW

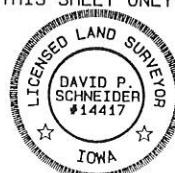
(Show a minimum of three reference ties to durable physical objects, relevant monuments and physical conditions that will enable recovery of the corner.)



I hereby certify that this land surveying document was prepared and the related survey work was performed by me or under my direct personal supervision and that I am a duly licensed Land Surveyor under the laws of the State of Iowa.

David P. Schneider P.L.S. #14417 Date: 6/19/2003
My license renewal date is December 31, 2003.
Pages or sheets covered by this seal: THIS SHEET ONLY

SCHNEIDER
Land Surveying & Planning, Inc.
P.O. Box 105 Peosta, Iowa 52068
Ph. #563-556-9055 Fax#563-556-9054



List Corners to be Indexed

Corners	Section	Twp	Range
NW CORNER SW FRL 1/4, SW FRL 1/4,	6	84N	3E
NW CORNER SE1/4, SW FRL 1/4,	6	84N	3E
NE CORNER SE1/4, SW FRL 1/4,	6	84N	3E

03 JUN 19 AM 9:52

PHYLLIS M. GERLACH
JACKSON COUNTY, IOWA
RECORDER # **00**
Fee 6.00

Prepared by: SCHNEIDER Land Surveying and Planning, Inc. P.O. Box 105 Peosta, Iowa 52068 563-556-9055

UNITED STATES PUBLIC LAND SURVEY CORNER CERTIFICATE OF

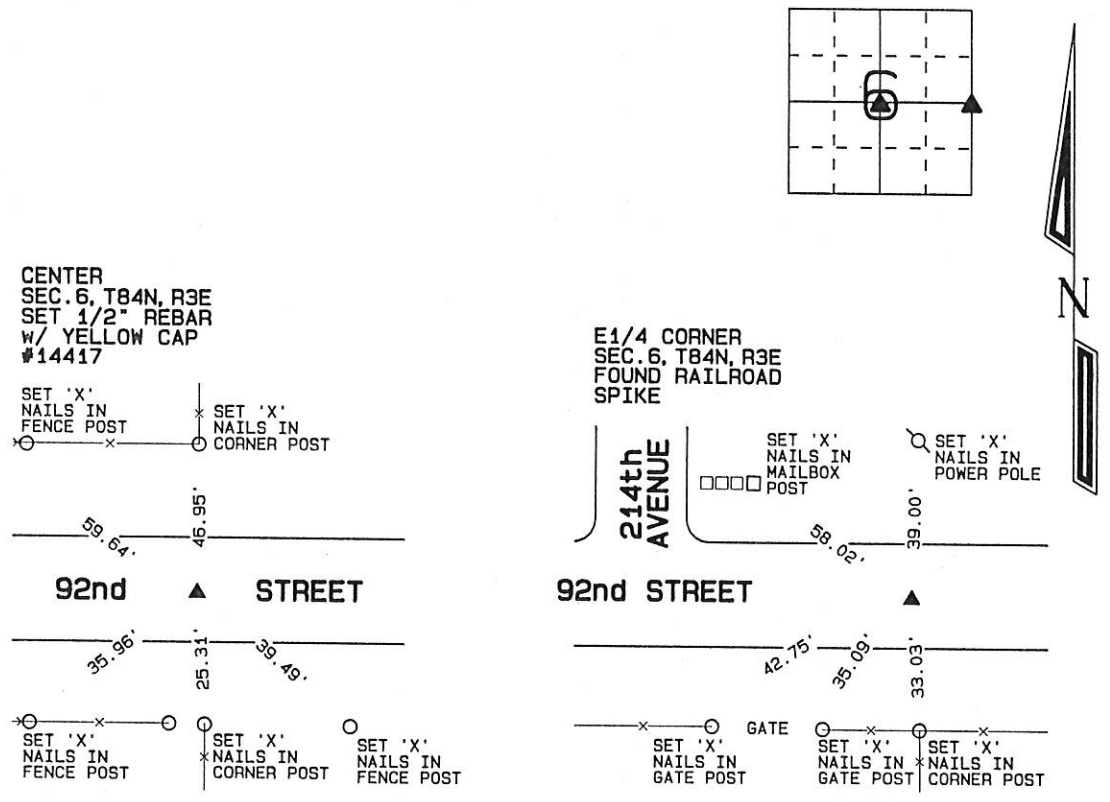
Land Survey Monuments situated in Section 6, Township 84 North, Range 3 East of the Fifth Principal Meridian, Jackson County, Iowa.
Previously recorded (NONE OF RECORD)

(Show reason for preparing this certificate, the evidence and detailed procedures used in establishing the corner positions and monumentation found or placed.)

Monument Description and Remarks: A RAILROAD SPIKE WAS FOUND AT THE E1/4 CORNER OF SECTION 6, T84N, R3E. THE SPIKE WAS TIED AND USED AS THE E1/4 CORNER OF SAID SECTION 6.
THE CENTER OF SEC. 6, T84N, R3E WAS ESTABLISHED 47 FEET SOUTH OF THE SOUTHEAST CORNER OF LOT 3 IN THE RICHARD OSTERT SUBDIVISION AS SHOWN ON THE RECORDED PLAT AND IN LINE WITH OCCUPATION FENCES NORTH AND SOUTH OF THE CENTER.

PLAN - VIEW

(Show a minimum of three reference ties to durable physical objects, relevant monuments and physical conditions that will enable recovery of the corner.)



I hereby certify that this land surveying document was prepared and the related survey work was performed by me or under my direct personal supervision and that I am a duly licensed Land Surveyor under the laws of the State of Iowa.

David P. Schneider 6/19/2003
David P. Schneider P.L.S. #14417 Date:
My license renewal date is December 31, 2003.

Pages or sheets covered by this seal: THIS SHEET ONLY

SCHNEIDER
Land Surveying & Planning, Inc.
P.O. Box 105 Peosta, Iowa 52068
Ph. #563-556-9055 Fax#563-556-9054



List Corners to be Indexed

Corners	Section	Twp	Range
CENTER	6	84N	3E
E1/4	6	84N	3E

FILE NO. 04-1252
BOOK 2 PAGE 246

04 MAR 29 AM 7:11

PHYLLIS M. GERLACH
JACKSON COUNTY, IOWA
RECORDER Fee \$11.00

Prepared by: SCHNEIDER Land Surveying and Planning, Inc. P.O. Box 105 Peosta, Iowa 52068 563-556-9055

UNITED STATES PUBLIC LAND SURVEY CORNER CERTIFICATE OF

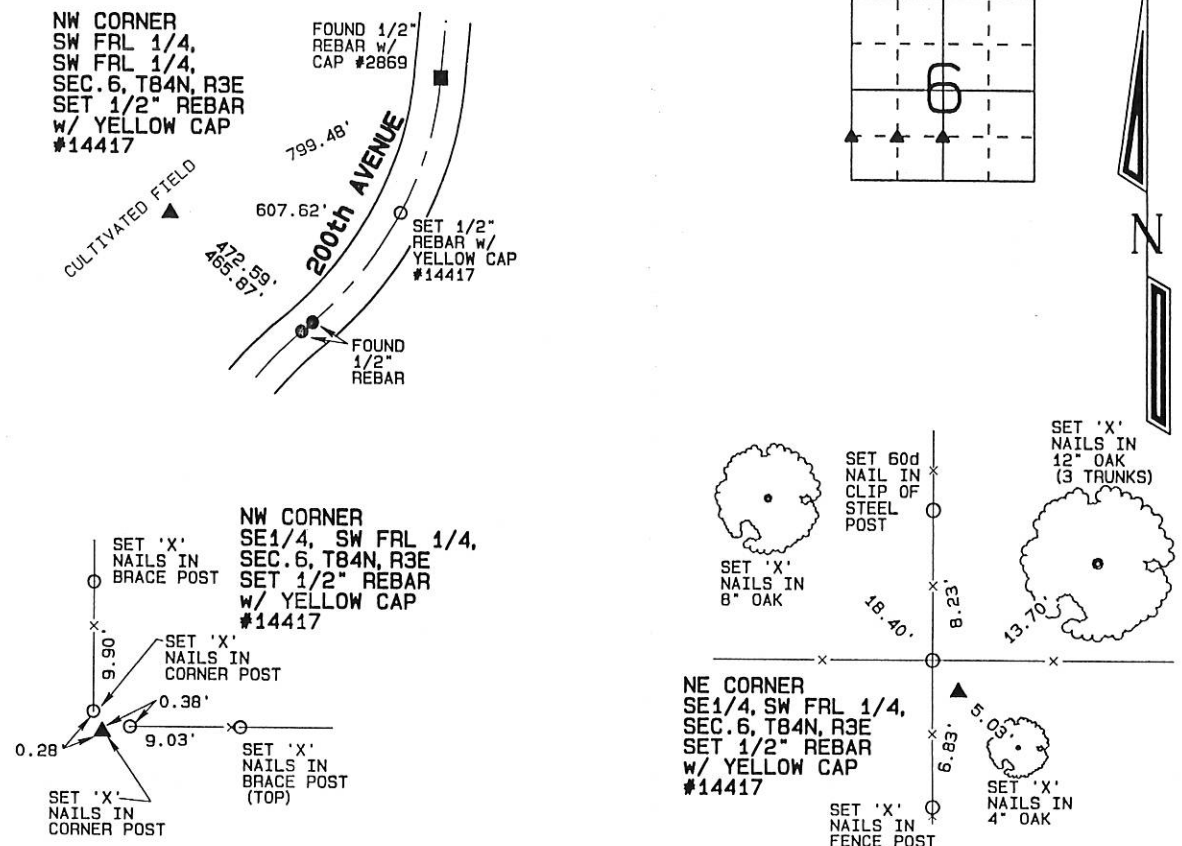
Land Survey Monuments situated in Section 6, Township 84 North, Range 3 East of the Fifth Principal Meridian, Jackson County, Iowa.
Previously recorded SCC BOOK 2, PAGE 169 (ALL)

(Show reason for preparing this certificate, the evidence and detailed procedures used in establishing the corner positions and monumentation found or placed.)

Monument Description and Remarks: THE NW CORNER OF THE SW FRL 1/4 OF THE SW FRL 1/4 OF SECTION 6, T84N, R3E WAS ESTABLISHED AT THE MIDPOINT OF A LINE FROM THE W1/4 CORNER TO THE NW CORNER OF SAID SECTION 6. THE NE CORNER OF SE1/4 OF THE SW FRL 1/4 OF SEC. 6, T84N, R3E WAS PLACED AT THE INTERSECTION OF OCCUPATION FENCES LOCATED NORTH, SOUTH, EAST AND WEST OF THE CORNER. THE NW CORNER OF THE SE1/4 OF THE SW FRL 1/4 OF SEC. 6, T84N, R3E WAS PLACED AT THE INTERSECTION OF OCCUPATION FENCES LOCATED NORTH AND EAST OF THE CORNER.

PLAN - VIEW

(Show a minimum of three reference ties to durable physical objects, relevant monuments and physical conditions that will enable recovery of the corner.)



I hereby certify that this land surveying document was prepared and the related survey work was performed by me or under my direct personal supervision and that I am a duly licensed Land Surveyor under the laws of the State of Iowa.

David P. Schneider P.L.S. #14417 Date: 3/26/2004
My license renewal date is December 31, 2005.

Pages or sheets covered by this seal: THIS SHEET ONLY

SCHNEIDER
Land Surveying & Planning, Inc.
P.O. Box 105 Peosta, Iowa 52068
Ph. #563-556-9055 Fax#563-556-9054



List Corners to be Indexed

Corners	Section	Twp	Range
NW CORNER SW FRL 1/4, SW FRL 1/4,	6	84N	3E
NW CORNER SE1/4, SW FRL 1/4,	6	84N	3E
NE CORNER SE1/4, SW FRL 1/4,	6	84N	3E

JOB NO. 186



Document 07-485

Book 2 Page 537 Type 15 001 Pages 1

Date 2/05/2007 Time 11:21 AM

Rec Amt \$7.00

ARLENE SCHAUF, RECORDER
JACKSON COUNTY IOWA

Prepared by: SCHNEIDER Land Surveying and Planning, Inc. P.O. Box 128 Farley, Iowa 52046 563-744-3631

UNITED STATES PUBLIC LAND SURVEY CORNER CERTIFICATE OF

Land Survey Monuments situated in Section 6, Township 84 North, Range 3 East of the Fifth Principal Meridian, Jackson County, Iowa.

Previously recorded (NONE OF RECORD)

(BOOK, PAGE / INST. NO. / CABINET, SLIDE)

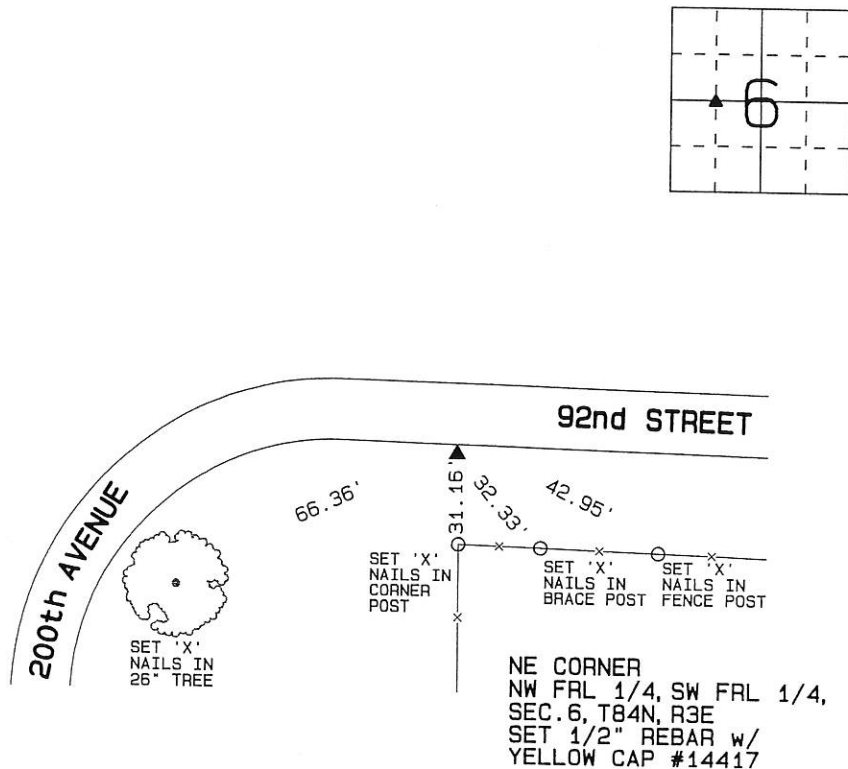
(Show reason for preparing this certificate, the evidence and detailed procedures used in establishing the corner positions and monumentation found or placed.)

Monument Description and Remarks:

THE NE CORNER OF THE NW FRACTIONAL 1/4 OF THE SW FRACTIONAL 1/4 OF SECTION 6, T84N, R3E OF THE 5th P.M. WAS ESTABLISHED AS DESCRIBED IN A WARRANTY DEED FILED NOVEMBER 27, 1978 IN BOOK 130, PAGE 487.

PLAN - VIEW

(Show a minimum of three reference ties to durable physical objects, relevant monuments and physical conditions that will enable recovery of the corner.)



I hereby certify that this land surveying document was prepared and the related survey work was performed by me or under my direct personal supervision and that I am a duly licensed Land Surveyor under the laws of the State of Iowa.

David P. Schneider P.L.S. #14417

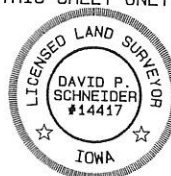
Date: 1/31/2007

My license renewal date is December 31, 2007.

Pages or sheets covered by this seal: THIS SHEET ONLY

SCHNEIDER
Land Surveying & Planning, Inc.

P.O. Box 128 Farley, Iowa 52046
Ph. #563-744-3631 Fax#563-744-3629



List Corners to be Indexed

Corners	Section	Twp	Range
NE CORNER NW FRL 1/4, SW FRL 1/4	6	84N	3E

Book 2 Page 537 JOB NO. 992