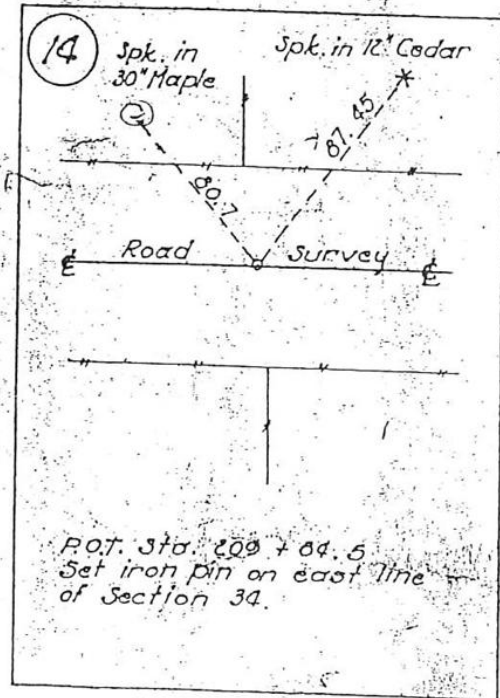
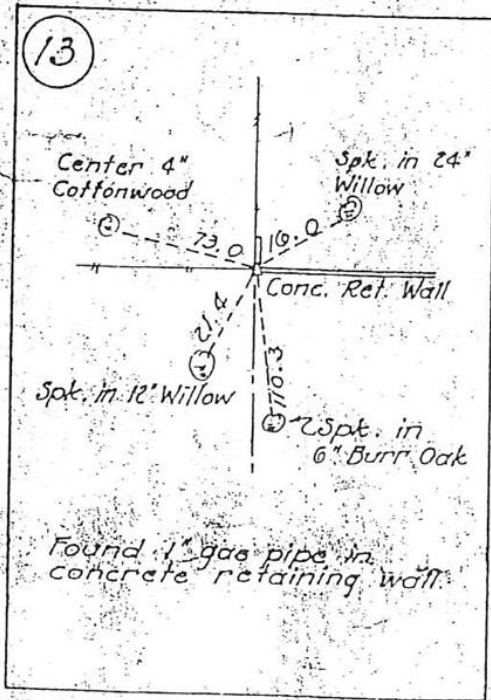
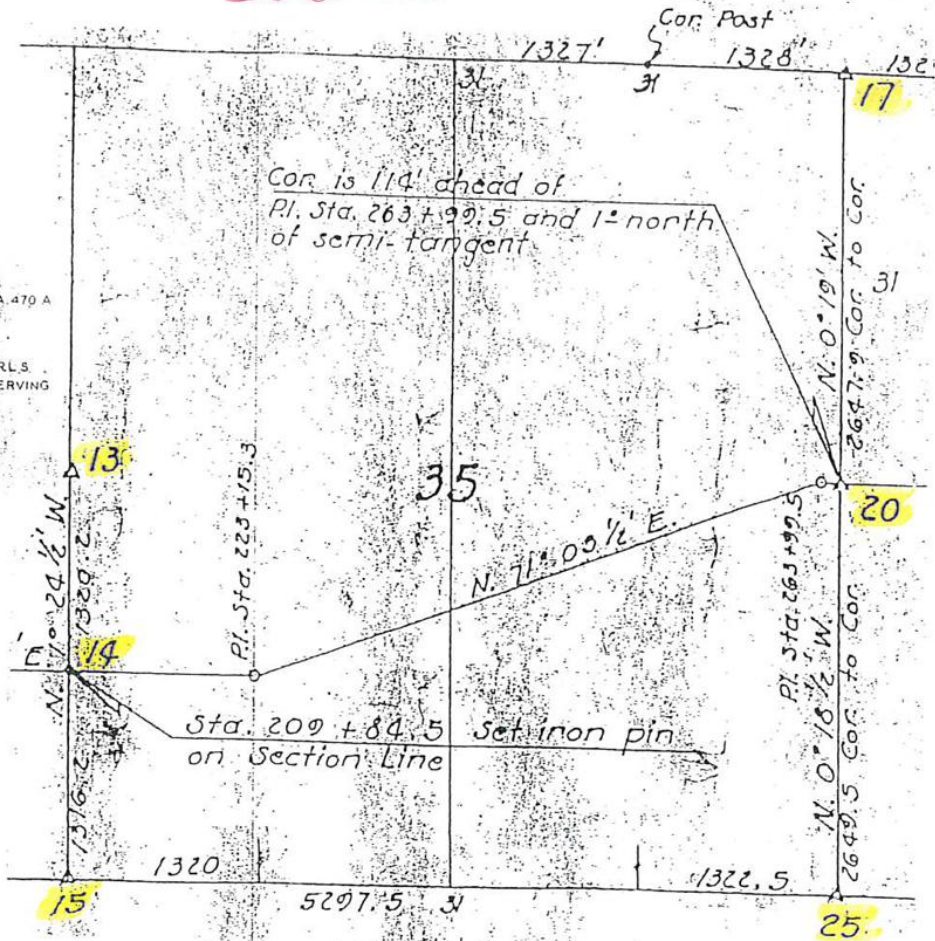
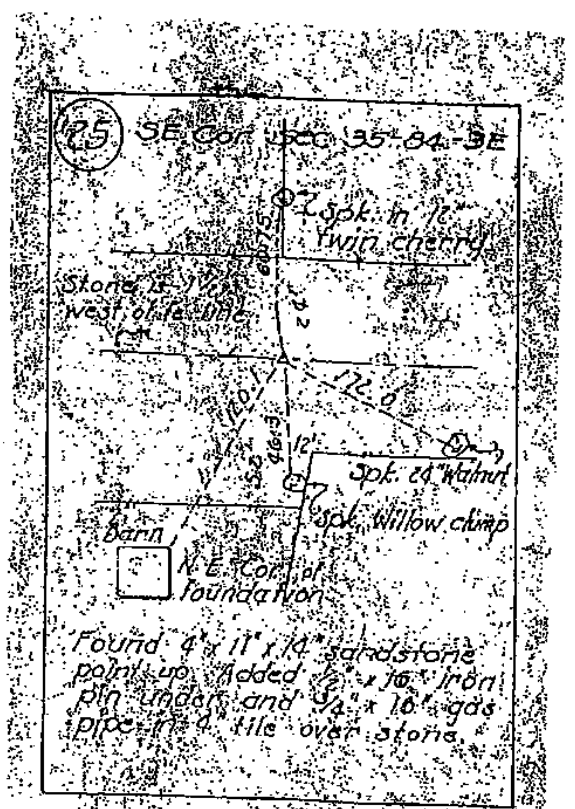
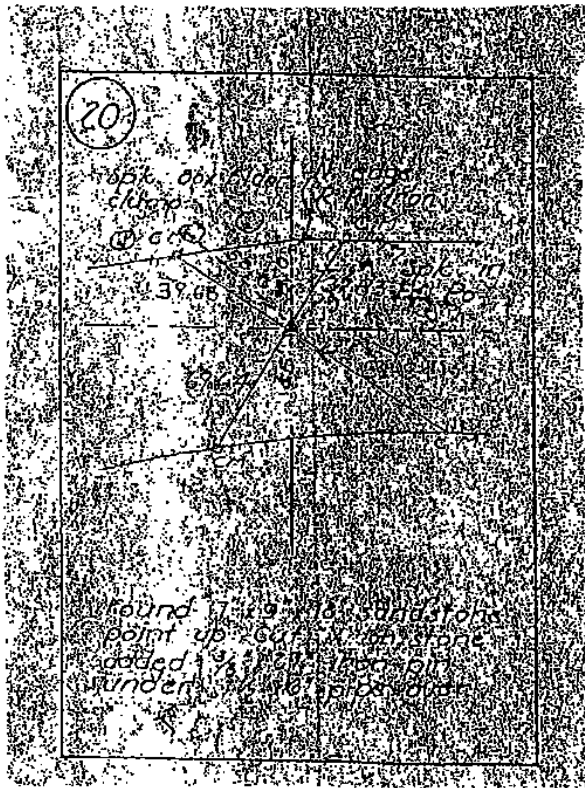
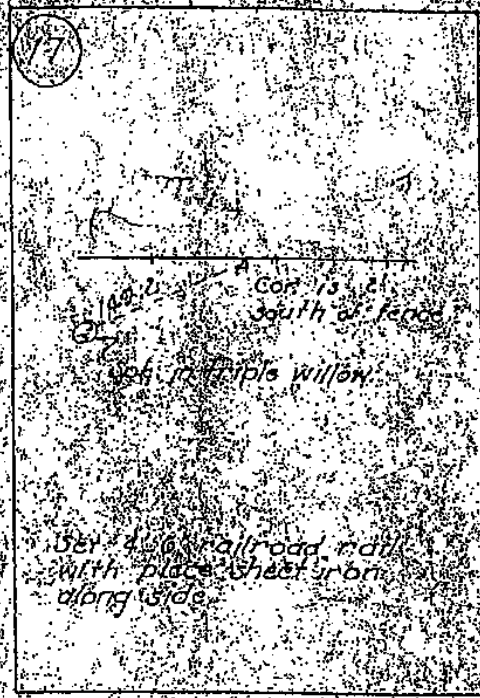
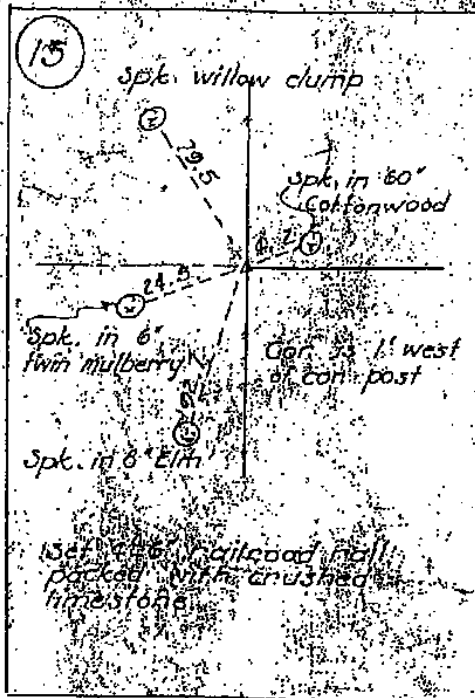


JACKSON CO T.84 N. R.3E. AND R.4E.
 OR RIGHT-OF-WAY DESCRIPTIONS ON PRIMARY NO. 64 PROJ. FA. 470 A
 MADE FOR
 THE IOWA STATE HIGHWAY COMMISSION
 BY G. R. ELLIOTT CHIEF OF PARTY DIRECTED BY H. S. LEIGHT R.L.S.
 BEARINGS ARE FROM THE TRUE MERIDIAN DETERMINED BY OBSERVING
 SOLARIS AT STA. 2+32 STA. 24+42 AND STA. 27+20
 FIELD NOTES FOR THIS SURVEY ARE FILED WITH THE
 IOWA HIGHWAY COMMISSION AMES, IOWA
 AUGUST 13 TO OCTOBER 9, 1937





UNITED STATES PUBLIC LAND SURVEY CORNER CERTIFICATE

OF

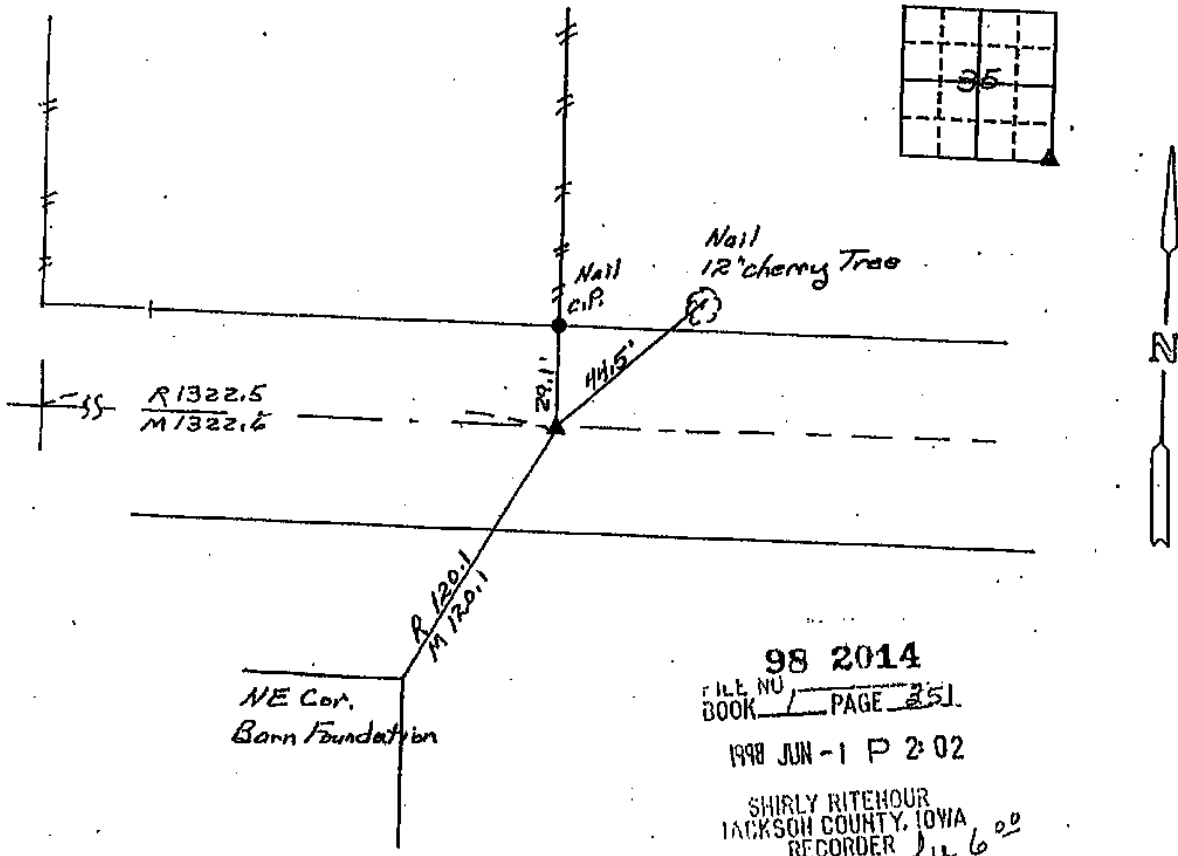
Land Survey Monuments situated in Section 35, Township 84N, Range 3E, of the Fifth Principal Meridian, Jackson County, Iowa.
Previously recorded in Book Engineer's Office, Page _____

(Show reason for preparing this certificate, the evidence and detailed procedures used in establishing the corner positions and monumentation found or placed.)

Monument Description and Remarks: Old records indicate a stone with iron pipes and rods set over and under stone in a county gravel Rd. Corner was set with 5/8" x 18 Rod in accord with 2 original references.

PLAN - VIEW

(Show a minimum of three reference ties to durable physical objects, relevant monuments and physical conditions that will enable recovery of the corner.)



98 2014
 FILE NO. _____
 BOOK _____ PAGE 251
 1998 JUN - 1 P 2:02
 SHIRLY RITEHOUR
 JACKSON COUNTY, IOWA
 RECORDER *ju 6⁰²*

I hereby certify that the survey work was completed and this certificate was prepared by me or under my direct personal supervision and that I am a duly registered land surveyor under the laws of the state of Iowa.

William D. Upmeyer 6-1-98
REGISTERED LAND SURVEYOR NO. 2869

SEAL



List Corners to be Indexed

Corners	Section	Twp	Range
SE	35	84N	3E

ARLENE SCHAUF, RECORDER/REGISTRAR
JACKSON COUNTY IOWA

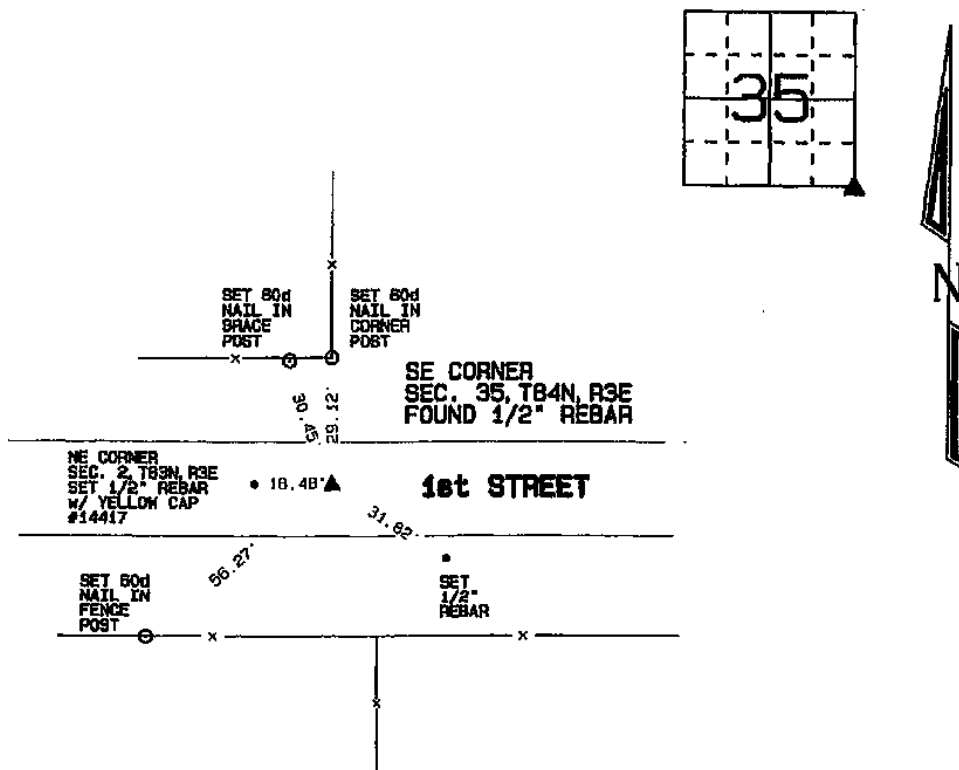
Prepared by: SCHNEIDER Land Surveying and Planning, Inc. P.O. Box 128 Farley, Iowa 52046 563-744-3631

UNITED STATES PUBLIC LAND SURVEY CORNER CERTIFICATE OF

Land Survey Monuments situated in Section 35, Township 84 North, Range 3 East of the Fifth Principal Meridian, Jackson County, Iowa.
Previously recorded SE CORNER - BCC BOOK 1, PAGE 351
BOOK, PAGE / SHEET, NO. / CORNER, S.T.O.

Monument Description and Remarks: THE SE CORNER OF SEC. 35, T84N, R3E WAS FOUND AS ILLUSTRATED ON A SECTION CORNER CERTIFICATE FILED IN SCC BOOK 1, PAGE 351 AND RETIRED TO ADD ADDITIONAL REFERENCE TIES.

PLAN - VIEW



I hereby certify that this land surveying document was prepared and the related survey work was performed by me or under my direct personal supervision and that I am a duly licensed Land Surveyor under the laws of the State of Iowa.

David P. Schneider 12/30/2019
David P. Schneider P.L.S. #14417 Date:
My license renewal date is December 31, 2019.

Pages or sheets covered by this seal: THIS SHEET ONLY

SCHNEIDER
Land Surveying & Planning, Inc.

P.O. Box 128 Farley, Iowa 52046
Ph. #563-744-3631 dvas@yousq.net



List Corners to be Indexed

Corner	Section	Twp	Range
SE CORNER	35	84N	3E