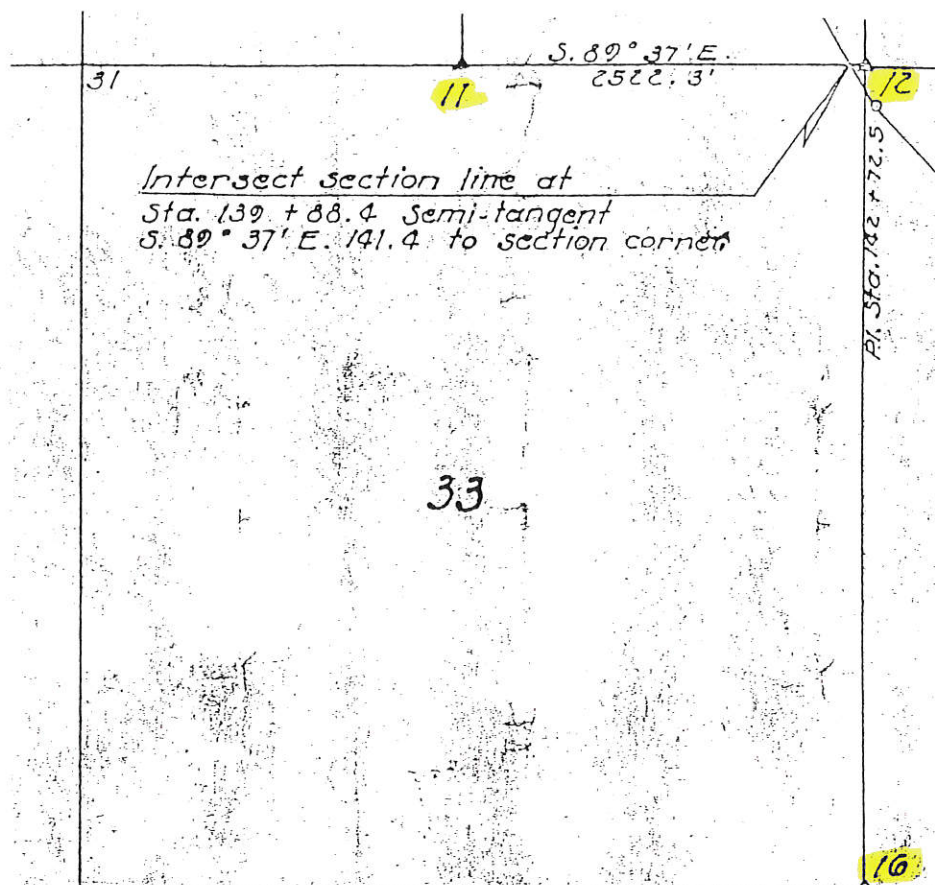


Sec. 33



LAND CORNER SURVEY

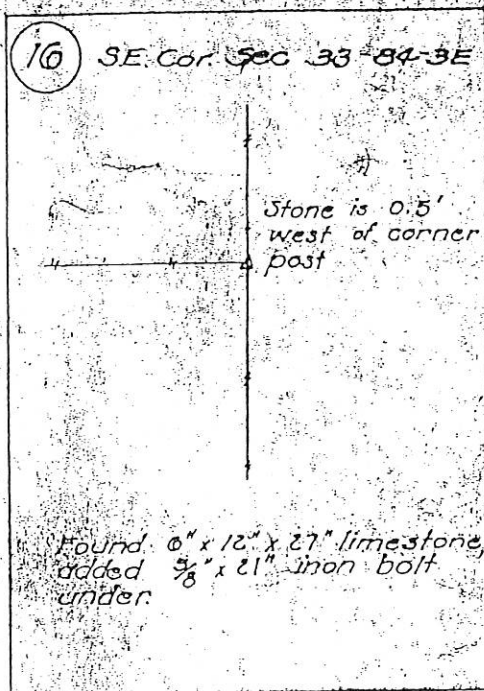
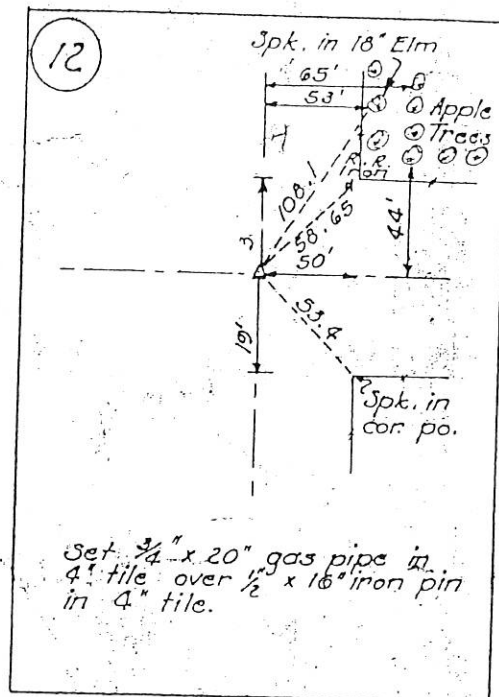
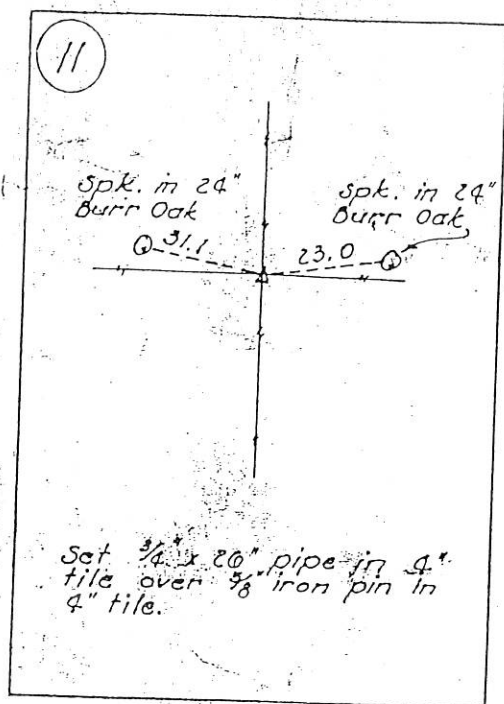
JACKSON CO T.84 N. R.3 E. AND R.4 E.

FOR RIGHT OF WAY DESCRIPTIONS ON PRIMARY NO. 64 PROJ. FA. 470 A
MADE FOR

THE IOWA STATE HIGHWAY COMMISSION

BY G. R. ELLIOTT CHIEF OF PARTY DIRECTED BY H. S. LEIGHT R.L.S.
BEARINGS ARE FROM THE TRUE MERIDIAN DETERMINED BY OBSERVING
POLARIS AT STA. 2 + 32 STA. 241 + 42 AND STA. 417 + 20
FIELD NOTES FOR THIS SURVEY ARE FILED WITH THE
IOWA HIGHWAY COMMISSION AMES, IOWA

AUGUST 13 TO OCTOBER 8, 1937



99 0653

BOOK 1 PAGE 366

99 Feb 17 AM 10:32

PHYLLIS H. GERLACH
JACKSON COUNTY, IOWA

Prepared by: SCHNEIDER Land Surveying and Planning 2640 J.F.K. Rd Dubuque, Iowa 52001 319-556-9055

UNITED STATES PUBLIC LAND SURVEY CORNER CERTIFICATE OF

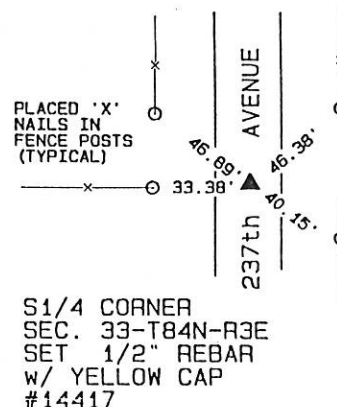
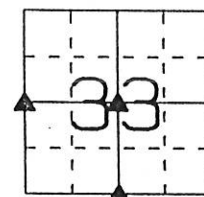
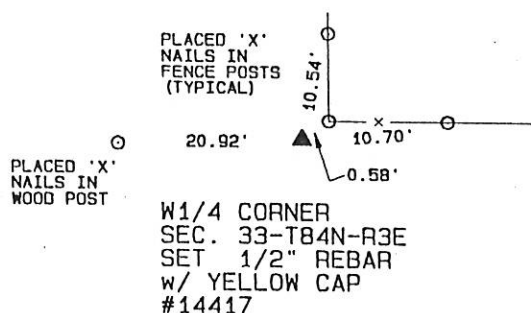
Land Survey Monuments situated in Section 33, Township 84 North, Range 3 EAST
of the Fifth Principal Meridian, JACKSON County, Iowa.
Previously recorded

(Show reason for preparing this certificate, the evidence and detailed procedures used in establishing the corner positions and monumentation found or placed.)

Monument Description and Remarks: W1/4 CORNER, SEC. 33 - SET 1/2" REBAR w/ YELLOW CAP
#14417 AT QUARTER LINE/OCCUPATION FENCES GOING WEST, EAST AND NORTH.CENTER, SEC. 33 - SET 1/2" REBAR w/ YELLOW CAP #14417 AT QUARTER LINE/OCCUPATION FENCES GOING
WEST, EAST AND SOUTH.S1/4 CORNER, SEC. 33 - SET 1/2" REBAR w/ YELLOW CAP #14417 IN THE CENTER OF N-S GRAVEL ROAD ON
THE EXTENSION OF A SECTION LINE/OCCUPATION FENCE GOING WEST.

PLAN - VIEW

(Show a minimum of three reference ties to durable physical objects, relevant monuments and physical conditions that will enable recovery of the corner.)



I hereby certify that this land surveying document was prepared and the related survey work was performed by me or under my direct personal supervision and that I am a duly licensed Land Surveyor under the laws of the State of Iowa.

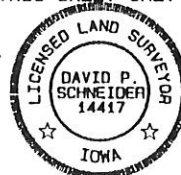
David P. Schneider P.L.S. #14417

Date:

My license renewal date is December 31, 1999.

Pages or sheets covered by this seal: THIS SHEET ONLY

SEAL



List Corners to be Indexed

Corners	Section	Twp	Range
W1/4	33	84	3 E
CENTER	33	84	3 E
S1/4	33	84	3 E

99 0654

BOOK 1 PAGE 367

99 Feb 17 AM 10:32

PHYLLIS E. GERLACH
JACKSON COUNTY, IOWA

Prepared by: SCHNEIDER Land Surveying and Planning 2640 J.F.K. Rd Dubuque, Iowa 52001 319-556-9055

UNITED STATES PUBLIC LAND SURVEY CORNER CERTIFICATE OFLand Survey Monuments situated in Section 33 Township 84 North, Range 3 EAST
of the Fifth Principal Meridian, JACKSON County, Iowa.
Previously recorded _____

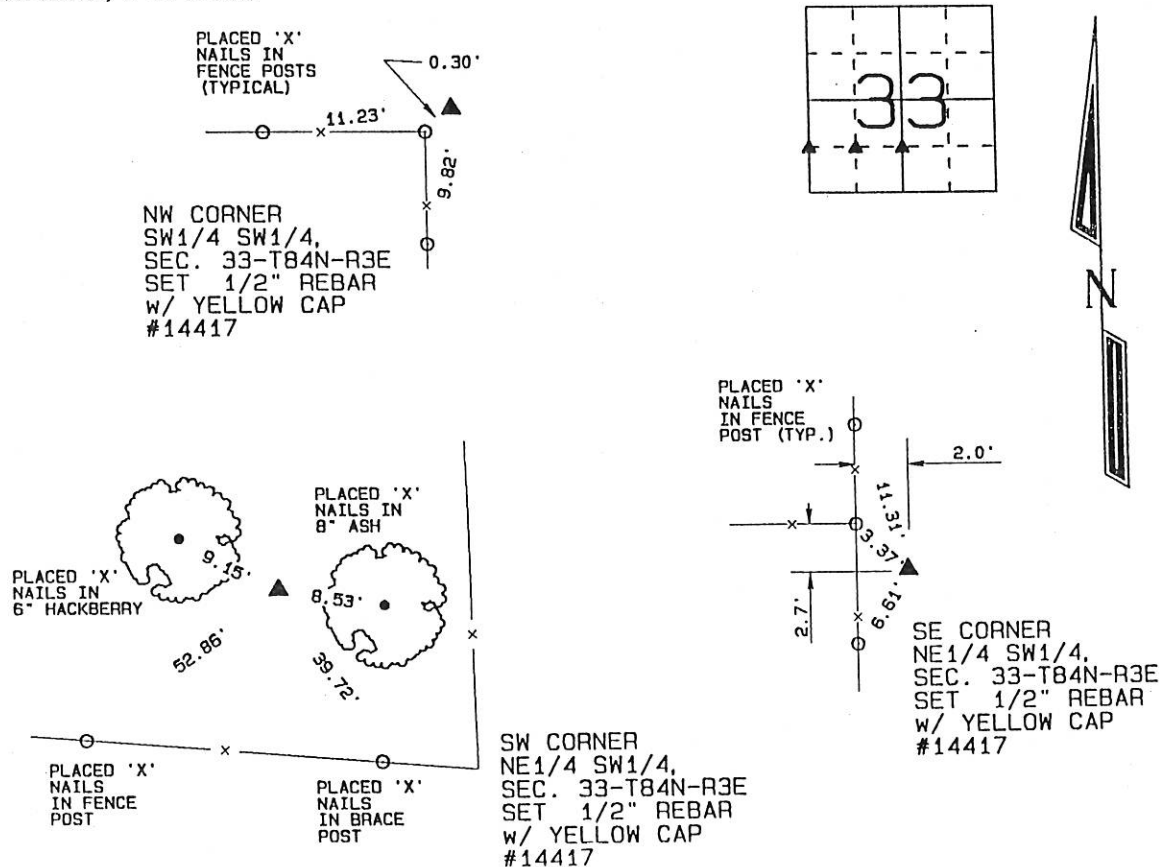
(BOOK, PAGE / INST. NO. / CASSETT, SLIDE)

(Show reason for preparing this certificate, the evidence and detailed procedures used in establishing the corner positions and monumentation found or placed.)

Monument Description and Remarks: NW CORNER SW1/4 SW1/4, SEC. 33 - SET 1/2" REBAR w/
YELLOW CAP #14417 AT INTERSECTION OF QUARTER-QUARTER SECTION LINE FENCES GOING SOUTH AND WEST.
SW CORNER, NE1/4 SW1/4, SEC. 33 - SET 1/2" REBAR w/ YELLOW CAP #14417 AT A DISTANCE SPLIT
BETWEEN THE QUARTER-QUARTER CORNERS TO THE EAST AND WEST.
SE CORNER, NE1/4 SW1/4, SEC. 33 - SET 1/2" REBAR w/ YELLOW CAP #14417 AT A DISTANCE SPLIT
BETWEEN THE CENTER AND S1/4 CORNER OF SECTION 33.

PLAN - VIEW

(Show a minimum of three reference ties to durable physical objects, relevant monuments and physical conditions that will enable recovery of the corner.)

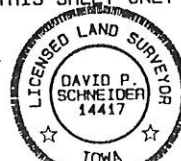


I hereby certify that this land surveying document was prepared and the related survey work was performed by me or under my direct personal supervision and that I am a duly licensed Land Surveyor under the laws of the State of Iowa.

David P. Schneider P.L.S. #14417 Date: 2/15/99
My license renewal date is December 31, 1999.

Pages or sheets covered by this seal: THIS SHEET ONLY

SEAL

**List Corners to be Indexed**

Corners	Section	Twp	Range
NW CORNER SW1/4 SW1/4	33	84	3 E
SW CORNER NE1/4 SW1/4	33	84	3 E
SE CORNER NE1/4 SW1/4	33	84	3 E

99-0655

BOOK 1 PAGE 368

99 Feb 17 AM 10:32

PHYLLIS M. GERLACH
JACKSON COUNTY, IOWA

Prepared by: SCHNEIDER Land Surveying and Planning 2640 J.F.K. Rd Dubuque, IOWA 52001 319-556-9055

UNITED STATES PUBLIC LAND SURVEY CORNER CERTIFICATE OFLand Survey Monuments situated in Section 33, Township 84 North, Range 3 EAST
of the Fifth Principal Meridian, JACKSON County, Iowa.
Previously recorded

(BOOK, PAGE / INST. NO. / CABINET, SLIDE)

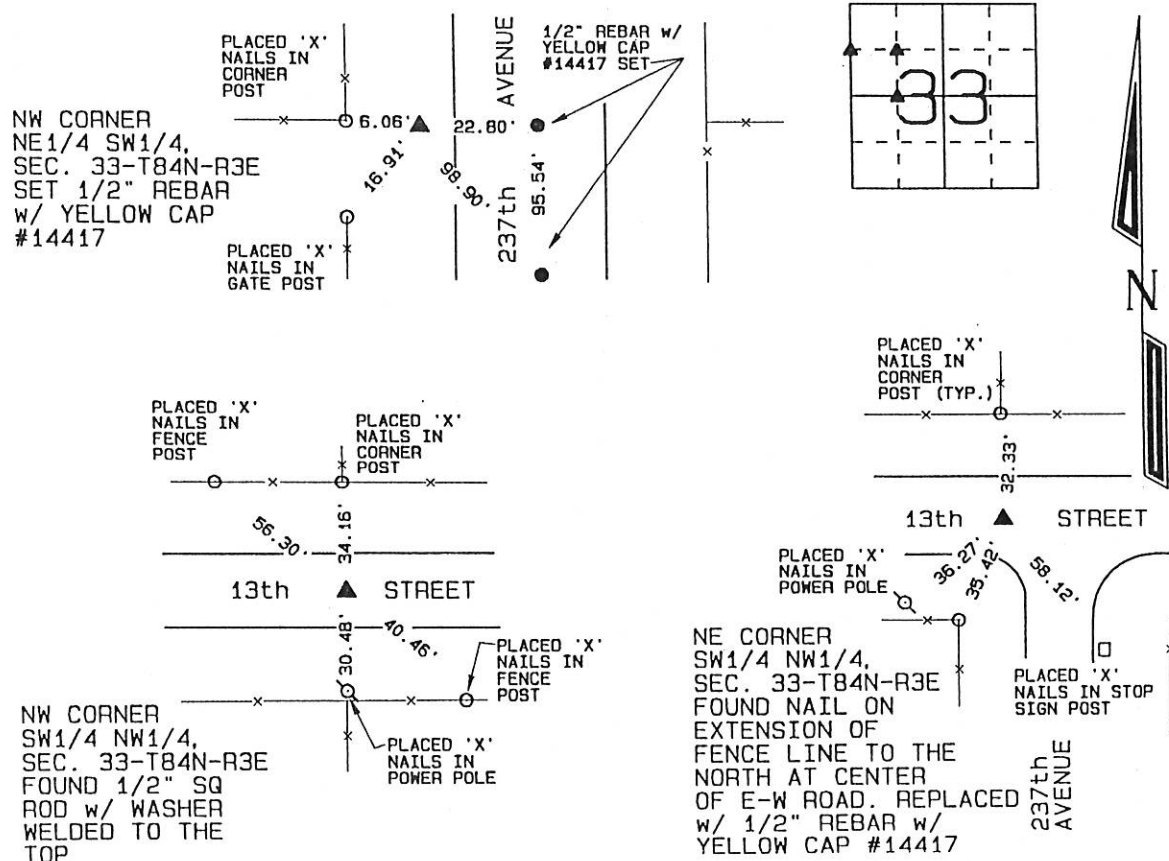
(Show reason for preparing this certificate, the evidence and detailed procedures used in establishing the corner positions and monumentation found or placed.)

Monument Description and Remarks: NW CORNER, NE1/4 SW1/4, SEC. 33 - SET MONUMENT AT A
DISTANCE SPLIT BETWEEN THE W1/4 CORNER AND THE CENTER OF SEC. 33 ON OCCUPATION FENCE LINES.

NW CORNER, SW1/4 NW1/4, SEC. 33- FOUND EXISTING MONUMENT.

NE CORNER, SW1/4 NW1/4, SEC. 33 - FOUND NAIL ON EXTENSION OF FENCE LINE TO THE NORTH AT CENTER
OF E-W ROAD. REPLACED w/ 1/2" REBAR w/ YELLOW CAP #14417.**PLAN - VIEW**

(Show a minimum of three reference ties to durable physical objects, relevant monuments and physical conditions that will enable recovery of the corner.)



I hereby certify that this land surveying document was prepared and the related survey work was performed by me or under my direct personal supervision and that I am a duly licensed Land Surveyor under the laws of the State of Iowa.

David P. Schneider 2/15/99
David P. Schneider P.L.S. #14417 Date:
My license renewal date is December 31, 1999.

Pages or sheets covered by this seal: THIS SHEET ONLY

SEAL

**List Corners to be Indexed**

Corners	Section	Twp	Range
NW CORNER NE1/4 SW1/4	33	84	3 E
NW CORNER SW1/4 NW1/4	33	84	3 E
NE CORNER SW1/4 NW1/4	33	84	3 E