

ARLENE SCHAUF, RECORDER/REGISTRAR  
JACKSON COUNTY IOWA

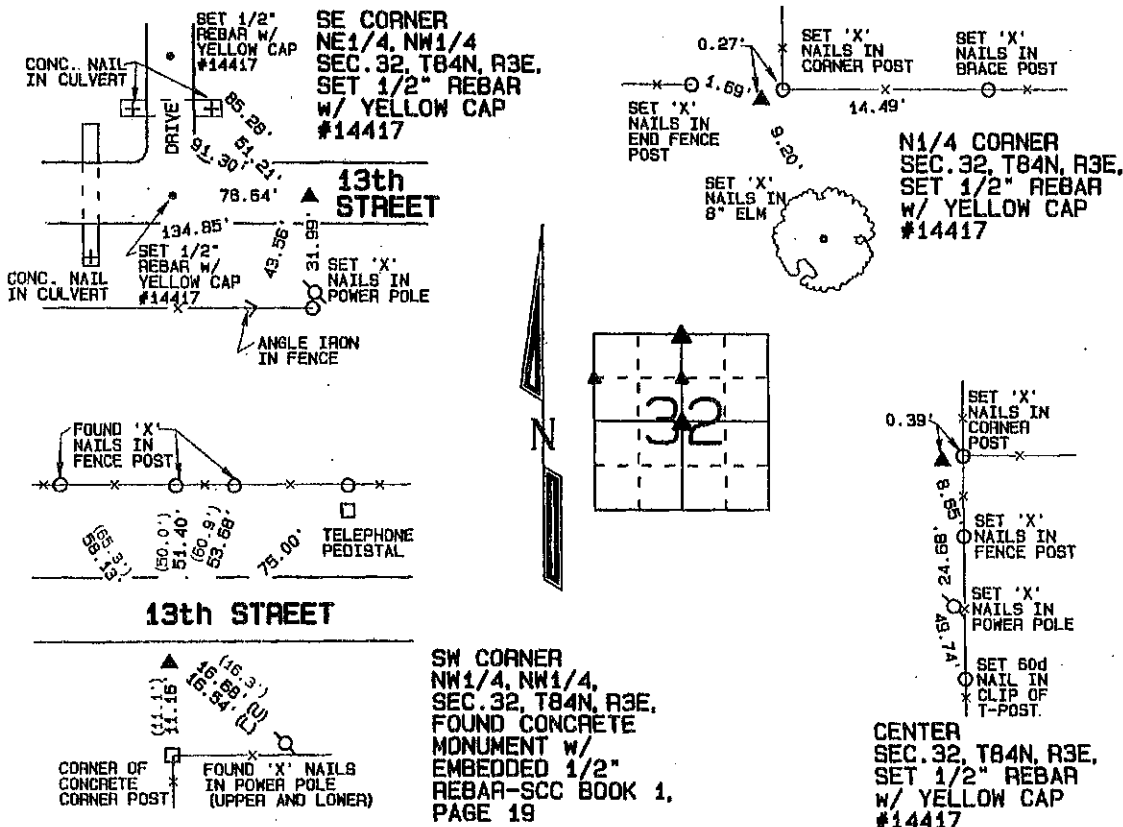
UNITED STATES PUBLIC LAND SURVEY CORNER CERTIFICATE OF

(Show reason for preparing this monumentation found or placed.)

(Show reason for preparing this certificate, the evidence and detailed procedures used in establishing the corner positions and monumentation found or placed.)

Monument Description and Remarks: THE N1/4 CORNER OF SECTION 32, T84N, R3E WAS ESTABLISHED USING  
OCCUPATION EVIDENCE LOCATED TO THE EAST, NORTH AND WEST. A CONCRETE MONUMENT W/ 1/2" REBAR WAS FOUND AT  
THE SW CORNER OF THE NW1/4 OF THE NW1/4 OF SECTION 32, T84N, R3E AS ILLUSTRATED IN SECTION CORNER CERTIFICATE  
RECORDED IN SCC BOOK 1, PAGE 19. THE SE CORNER OF THE NE1/4 OF THE NW1/4 OF SECTION 32, T84N, R3E WAS  
ESTABLISHED AT THE MIDPOINT OF A LINE FROM THE CENTER TO THE N1/4 CORNER. THE CENTER OF SECTION 32, T84N, R3E  
WAS ESTABLISHED USING OCCUPATION EVIDENCE LOCATED TO THE NORTH, EAST, AND SOUTH OF THE CORNER.

(Show a minimum of three reference ties to durable physical objects, relevant monuments and physical conditions that will enable recovery of the corner.)



I hereby certify that this land surveying document was prepared and the related survey work was performed by me or under my direct personal supervision and that I am a duly licensed Land Surveyor under the laws of the State of Iowa.

David P. Schneider P.L.S. #14417

Date:

license renewal date is December 31, 2013.

Pages or sheets covered by this seal: THIS SHEET ONLY

Corner	Section	Twp	Range
N1/4 CORNER	32	84N	3E
SW CORNER NW1/4, NW1/4	32	84N	3E
SE CORNER NE1/4, NW1/4	32	84N	3E
CENTER	32	84N	3E

P.O. Box 128 Farley, Iowa 52046  
Ph. #563-744-3631 Fax#563-744-3629



JOB NO. 1688



Document 18-4342

Book 2018 Page 4342 Type 15 001 Pages 1

Date 12/17/2018 Time 11:24 AM

Rec Amt \$7.00

ARLENE SCHAUF, RECORDER/REGISTRAR  
JACKSON COUNTY IOWA

Prepared by: SCHNEIDER Land Surveying and Planning, Inc. P.O. Box 128 Farley, Iowa 52046 563-744-3631

**UNITED STATES PUBLIC LAND SURVEY CORNER CERTIFICATE OF**Land Survey Monuments situated in Section 32, Township 84 North, Range 3 East  
of the Fifth Principal Meridian, Jackson County, Iowa.

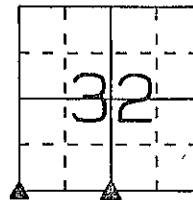
Previously recorded (NONE OF RECORD)

BOOK, PAGE / TRST. NO. / CABINET, BLTNG

## Monument Description and Remarks:

THE SW CORNER OF SECTION 32, T84N, R3E WAS ESTABLISHED 8 LINKS EAST OF THE NW CORNER OF SECTION 5, T83N, R3E AS  
ILLUSTRATED ON THE GOVERNMENT LAND OFFICE SURVEY.

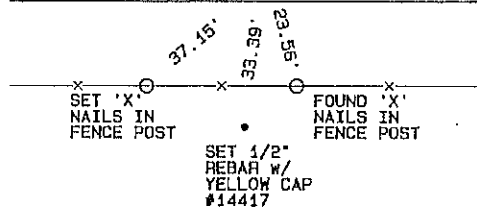
THE S1/4 CORNER OF SECTION 32, T84N, R3E WAS ESTABLISHED 4 LINKS EAST OF THE N1/4 CORNER OF SECTION 5, T83N, R3E.

**PLAN - VIEW**

SET 'X' NW CORNER  
NAILS IN SECTION 5,  
POWER POLE T83N, R3E  
FOUND CONC.  
MONUMENT W/  
1/2" REBAR

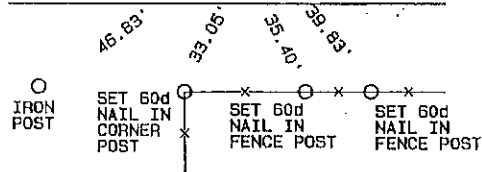
SW CORNER  
SEC. 32, T84N, R3E  
SET 1/2" REBAR  
W/ YELLOW CAP  
#14417

82.19'

100th  $\Delta 5.28'$  STREET

N1/4 CORNER  
SECTION 5,  
T83N, R3E  
SET 1/2" REBAR  
W/ YELLOW CAP  
#14417

S1/4 CORNER  
SEC. 32, T84N, R3E  
SET 1/2" REBAR  
W/ YELLOW CAP  
#14417

100th  $\Delta 2.64'$  STREET

I hereby certify that this land surveying document was prepared and the related survey work was performed by me or under my direct personal supervision and that I am a duly licensed Land Surveyor under the laws of the State of Iowa.

*David P. Schneider* 11/27/2018  
David P. Schneider P.L.S. #14417 Date:

My license renewal date is December 31, 2019.

Pages or sheets covered by this seal: THIS SHEET ONLY

## List Corners to be Indexed

Corners	Section	Twp	Range
SW CORNER	32	B4N	3E
S1/4 CORNER	32	B4N	3E

**SCHNEIDER**  
Land Surveying & Planning, Inc.

P.O. Box 128 Farley, Iowa 52046  
Ph. #563-744-3631 Email daves@yousq.net



JOB NO. 2131



Document 19-3663

Type 15 001

Pages 1

Date 11/05/2019 Time 8:43 AM

Rec Amt \$7.00

ARLENE SCHAUF, RECORDER/REGISTRAR  
JACKSON COUNTY IOWA

PREPARED BY: MICHAEL J. WEBER, WEBER SURVEYING, LLC, 26789 46TH AVE, BERNARD, IA 52032 (563) 879-4173

## UNITED STATES PUBLIC LAND SURVEY CORNER CERTIFICATE OF

LAND SURVEY MONUMENTS SITUATED IN SECTION 32, TOWNSHIP 84 NORTH, RANGE 3 EAST  
OF THE FIFTH PRINCIPAL MERIDIAN, JACKSON COUNTY, IOWA,  
PREVIOUSLY RECORDED NONE

(book, page, document number, etc.)

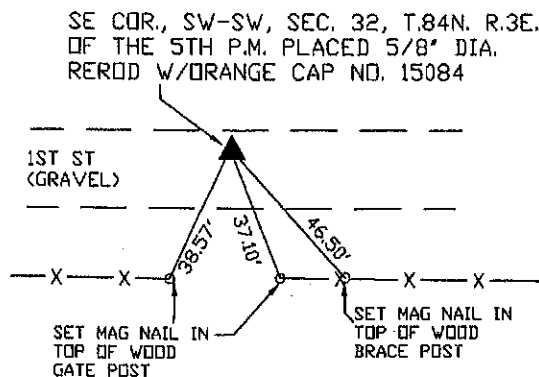
(Show reason for preparing this certificate, the evidence and detailed procedures used in establishing the corner positions and monumentation found or placed.)

Monument Description and Remarks:

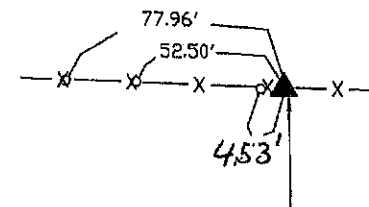
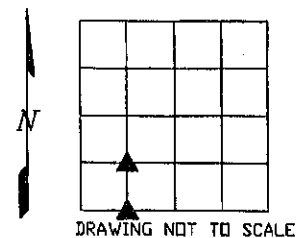
-SE COR., SW-SW, SEC. 32, T.84N. R.3E. OF THE 5TH P.M. PLACED 5/8" DIA. REROD. ESTABLISHED  
CORNER MIDWAY AND ONLINE BETWEEN THE SW COR. AND THE SOUTH 1/4 COR. OF SEC. 32.  
-NE COR., SW-SW, SEC. 32, T.84N. R.3E. OF THE 5TH P.M. PLACED 5/8" DIA. REROD. ESTABLISHED  
CORNER ONLINE BETWEEN THE SE COR., SW-SW, SEC. 32 AND THE NE COR., NW-SW, SEC. 32 AT THE  
INTERSECTION OF THE EAST-WEST OCCUPATION FENCELINE.

(Show a minimum of three reference ties to durable physical objects, relevant monuments and physical conditions that will enable recovery of the corner.)

### PLAN - VIEW

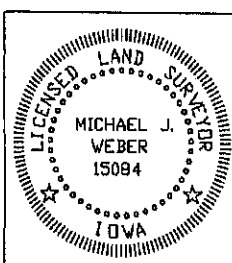


ALL TIES ARE  
SET MAG NAIL IN  
TOP OF WOOD  
POST



NE COR., SW-SW, SEC. 32, T.84N. R.3E.  
OF THE 5TH P.M. PLACED 5/8" DIA.  
REROD W/ORANGE CAP NO. 15084

DWG. NO. 19134



I HEREBY CERTIFY THAT THIS LAND SURVEYING DOCUMENT WAS  
PREPARED AND THE RELATED SURVEY WORK WAS PERFORMED BY ME OR  
UNDER MY DIRECT PERSONAL SUPERVISION AND THAT I AM A DULY  
LICENSED LAND SURVEYOR UNDER THE LAWS OF THE STATE OF IOWA.

*Michael J. Weber* November 4, 2019  
MICHAEL J. WEBER (DATE)

LICENSE NUMBER 15084

MY LICENSE RENEWAL DATE IS DECEMBER 31, 2019

SHEETS COVERED BY THIS SEAL: THIS SHEET

List Corners to be Indexed

Corner	Sec	Twp	Range
SE COR. SW-SW	32	84N	3E
NE COR. SW-SW	32	84N	3E



Document 24-301

Type 15 001

Pages 1

Date 2/06/2024 Time 2:53 PM

Rec Amt \$7.00

ARLENE SCHAUF, RECORDER/REGISTRAR  
JACKSON COUNTY IOWA

PREPARED BY: MICHAEL J. WEBER, WEBER SURVEYING, LLC, 26789 46TH AVE, BERNARD, IA 52032 (563) 879-4173

## UNITED STATES PUBLIC LAND SURVEY CORNER CERTIFICATE

LAND SURVEY MONUMENTS SITUATED IN SECTION 32, TOWNSHIP 84 NORTH, RANGE 3 EAST  
OF THE FIFTH PRINCIPAL MERIDIAN, JACKSON COUNTY, IOWA.  
PREVIOUSLY RECORDED NONE

(book, page, document number, etc.)

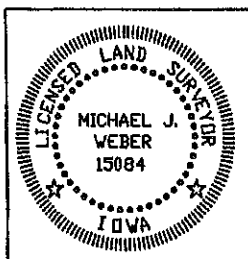
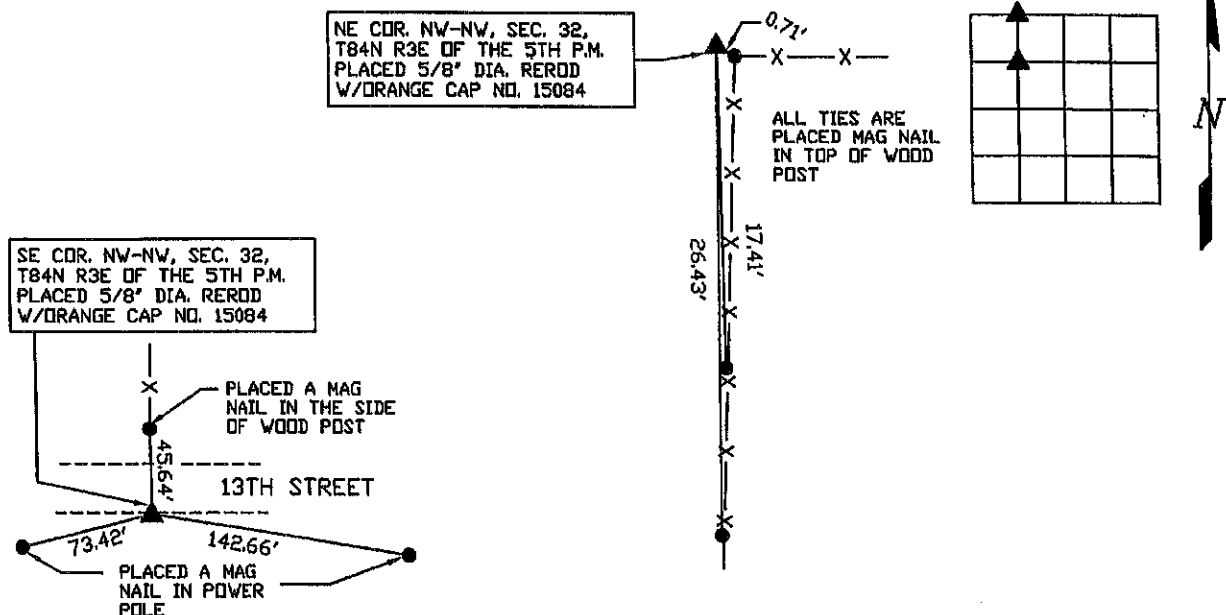
(Show reason for preparing this certificate, the evidence and detailed procedures used in establishing the corner positions and monumentation found or placed.)

### Monument Description and Remarks:

-SE COR. NW-NW, SEC. 32, T84N R3E OF THE 5TH P.M. PLACED 5/8" DIA. REROD W/ORANGE CAP NO. 15084, ESTABLISHED CORNER AT THE INTERSECTION OF THE LINE BETWEEN THE SW COR. OF THE NW-NW OF SAID SEC. 32 AND THE SE COR. OF THE NE-NW OF SAID SEC. 32 WITH AN OCCUPATION FENCE LINE RUNNING NORTH  
-NE COR. NW-NW, SEC. 32, T84N R3E OF THE 5TH P.M. PLACED 5/8" DIA. REROD W/ORANGE CAP NO. 15084, ESTABLISHED CORNER AT THE INTERSECTION OF THE OCCUPATION FENCE LINE RUNNING SOUTH & EAST

## PLAN - VIEW

(Show a minimum of three reference ties to durable physical objects, relevant monuments and physical conditions that will enable recovery of the corner.)



I HEREBY CERTIFY THAT THIS LAND SURVEYING DOCUMENT WAS  
PREPARED AND THE RELATED SURVEY WORK WAS PERFORMED BY ME OR  
UNDER MY DIRECT PERSONAL SUPERVISION AND THAT I AM A DULY  
LICENSED LAND SURVEYOR UNDER THE LAWS OF THE STATE OF IOWA.

*Michael J. Weber*  
MICHAEL J. WEBER  
LICENSE NUMBER 15084

MY LICENSE RENEWAL DATE IS DECEMBER 31, 2025

SHEETS COVERED BY THIS SEAL: Thrs sheet

### List Corners to be Indexed

Corner	Sec	Twp	Range
SE COR., NW-NW	32	84N	3E
NE COR., NW-NW	32	84N	3E

DWG: 23164