



Document 05-2673

Book 2 Page 364 Type 06 023 Pages 1

Date 7/05/2005 Time 1:27 PM

Rec Amt \$7.00

PHYLLIS M. GERLACH, RECORDER
JACKSON COUNTY IOWA

Prepared by Wm. Burger LandSurveyors

510 3rd Street West Court, Worthington, Iowa

Phone 562 - 855 2028

UNITED STATES PUBLIC LAND SURVEY CORNER CERTIFICATE

Land Survey Monuments situated in Section 2, Township 84N, Range 3E, of the Fifth Principal Meridian, Jackson County, Iowa. Previously recorded in N/A in the Office of the County Recorder

Monument Description and Remarks: (No Corner Certificates found at the County Recorders Office)

SW CORNER SE1/4 NE FRAC.1/4 - SET 1/2" IRON ROD W/ YELLOW LS CAP # 12642 - USED EXISTING AS EVIDENCE AND SET MIDWAY BETWEEN THE CENTER OF SECTION AND THE E1/4 CORNER

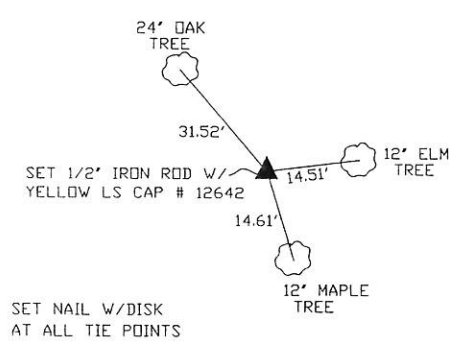
SE CORNER SE1/4 NE FRAC.1/4 - SET 1/2" IRON ROD W/ YELLOW LS CAP # 12642 - USED FENCELINE EVIDENCE AND ROAD RECORDS AND SET IN LINE WITH FENCE TO THE SOUTH AND THE CENTERLINE OF THE ROAD

NW CORNER SE1/4 NE FRAC.1/4 - SET 1/2" IRON ROD W/ YELLOW LS CAP # 12642 - RUN STRAIGHT LINES FROM OPPOSITE EAST/WEST 1/4 1/4 CORNER AND ADJUSTED TO FENCELINE

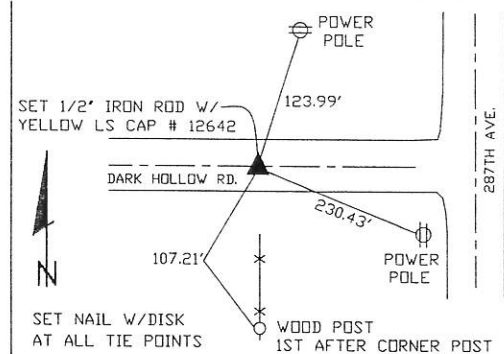
NE CORNER - SET 1/2" IRON ROD W/ YELLOW LS CAP # 12642 - SET IN EXISTING EAST/WEST FENCELINE AND IN LINE WITH THE SE CORNER AND THE E1/4

PLAN VIEW

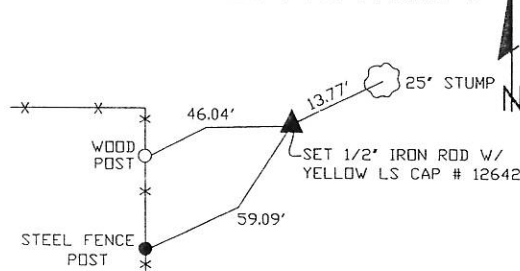
SW CORNER SE1/4 NE FRAC.1/4



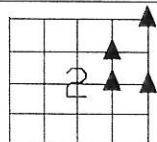
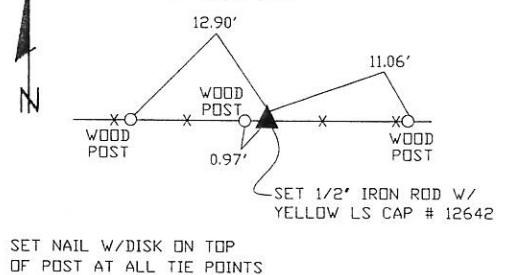
SE CORNER SE1/4 NE FRAC.1/4



NW CORNER SE1/4 NE FRAC.1/4



NE CORNER



SEC. 2 TWP. 84N RANGE 3E

CORNERS TO BE INDEXED

NW CORNER SE1/4 NE FRAC.1/4	2	84N	3E
SE CORNER SE1/4 NE FRAC.1/4	2	84N	3E
SW CORNER SE1/4 NE FRAC.1/4	2	84N	3E
NE CORNER	2	84N	3E



I hereby certify that this land surveying document was prepared and related survey work was performed by me or under my direct personal supervision and that I am a duly licensed Land Surveyor under the laws of the State of Iowa.

William H. Burger 6/27/05
 William H. Burger Date

License number 12642

My license renewal date is December 31, 2006

Pages or Sheets covered by this seal: Sheet 1 of 1

Book 2 Page 364