



Document 08-1640

Book 2 Page 616 Type 15 001 Pages 1
Date 4/25/2008 Time 2:49 PM
Rec Amt \$7.00

ARLENE SCHAUF, RECORDER/REGISTRAR
JACKSON COUNTY IOWA

PREPARED BY: MICHAEL J. WEBER, WEBER SURVEYING, LLC, 26789 46TH AVE, BERNARD, IA 52032 (563) 879-4173

UNITED STATES PUBLIC LAND SURVEY CORNER CERTIFICATE OF

LAND SURVEY MONUMENTS SITUATED IN SECTION 27, TOWNSHIP 84 NORTH, RANGE 3 EAST
OF THE FIFTH PRINCIPAL MERIDIAN, JACKSON COUNTY, IOWA,
PREVIOUSLY RECORDED NONE UNLESS OTHERWISE NOTED

(book, page, document number, etc.)

(Show reason for preparing this certificate, the evidence and detailed procedures used in establishing the corner positions and monumentation found or placed.)

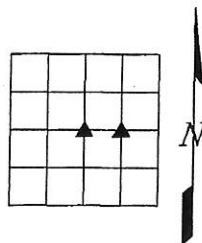
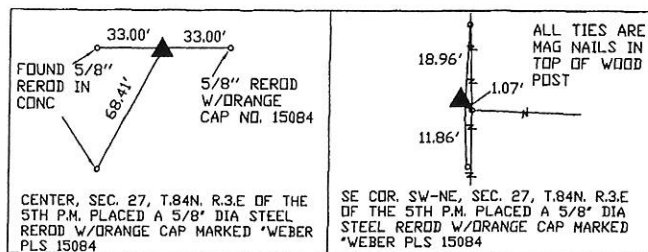
Monument Description and Remarks:

-CENTER, SEC. 27, T.84N. R.3E OF THE 5TH P.M. PLACED A 5/8" DIA STEEL REROD W/ORANGE CAP MARKED "WEBER PLS 15084" ESTABLISHED CORNER USING PLAT OF SURVEYS IN PLAT BOOK 1-D PAGES 109 & 118

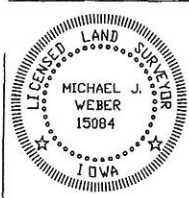
-SE COR. SW-NE, SEC. 27, T.84N. R.3E OF THE 5TH P.M. PLACED A 5/8" DIA STEEL REROD W/ORANGE CAP MARKED "WEBER PLS 15084" ESTABLISHED CORNER USING OCCUPATION FENCELINE EAST & SOUTH

(Show a minimum of three reference ties to durable physical objects, relevant monuments and physical conditions that will enable recovery of the corner.)

PLAN - VIEW



DWG. NO. PERSHING



I HEREBY CERTIFY THAT THIS LAND SURVEYING DOCUMENT WAS PREPARED AND THE RELATED SURVEY WORK WAS PERFORMED BY ME OR UNDER MY DIRECT PERSONAL SUPERVISION AND THAT I AM A DULY LICENSED LAND SURVEYOR UNDER THE LAWS OF THE STATE OF IOWA.

Michael J. Weber April 17, 2008
(DATE)

MICHAEL J. WEBER
LICENSE NUMBER 15084

MY LICENSE RENEWAL DATE IS DECEMBER 31, 2009

SHEETS COVERED BY THIS SEAL: THIS SHEET

Corner	Sec	Twp	Range
CENTER	27	84N	3E
SE Cor. SW-NE	27	84N	3E

msw

Book 2 Page 616