

FILE NO. 03-4840
BOOK 2 PAGE 178

03 AUG 15 PM 1:09

PREPARED BY: EGGER ENGINEERING AND LAND SURVEYING, P.C.
2395 TECH DRIVE SUITE 2 BETTENDORF, IOWA 52722 563-332-6330

PHYLLIS M. GERLACH
JACKSON COUNTY, IOWA
RECORDER

UNITED STATES PUBLIC LAND SURVEY CORNER CERTIFICATE
OF

Land Survey Monuments situated in Section 24, Township 84, Range 3E, of the Fifth Principal Meridian, JACKSON County, Iowa. Previously recorded in NOT RECORDED in County Recorder's Office.

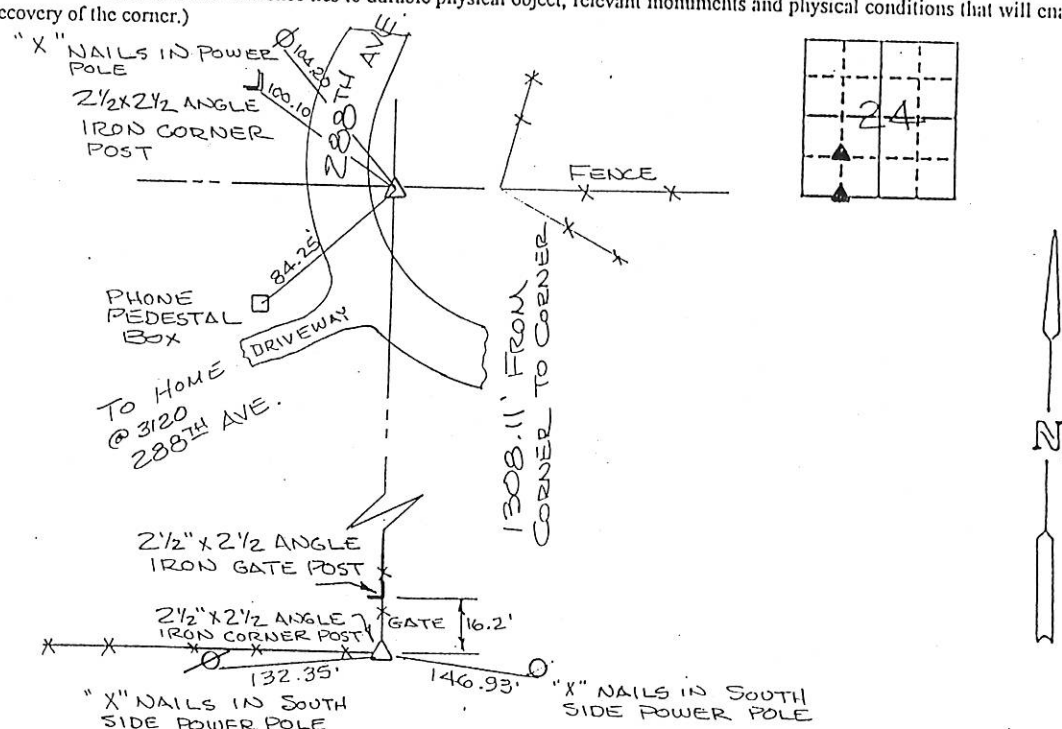
(Show reason for preparing this certificate, the evidence and detailed procedures used in establishing the corner positions and monumentation found or placed.)

Monument Description and Remarks: SE COR. SW 1/4 - SW 1/4 FOUND A 2 1/2" X 2 1/2" ANGLE IRON FENCE POST IMBEDDED IN CONC. AT A FENCELINE GOING WEST & NORTH

SE COR NW 1/4 - SW 1/4 - SET 9/8" REBAR AT THE INTERSECTION OF AN E-W. FENCE WITH THE E LINE OF THE W 1/2 - SW 1/4

PLAN - VIEW

(Show a minimum of three reference ties to durable physical object, relevant monuments and physical conditions that will enable recovery of the corner.)

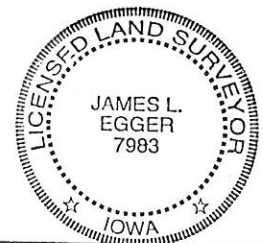


I hereby certify that the survey work was completed and this certificate was prepared by me or under my direct supervision and that I am a duly registered land surveyor under the laws of the state of Iowa.

Signature: James L. Egger
James L. Egger L.S.

Date: AUG. 13, 2003 Reg. No. 7983

SEAL



Corners List Corners to be Indexed
Section Twp Range

SE COR OF NW 1/4 - SW 1/4 24 84 3E

SE COR OF SW 1/4 - SW 1/4 24 84 3E