

COPY

FILE NO. 03-1284  
PAGE 617

03 MAR -7 PM12: 15

PHYLLIS M. GERLACH  
JACKSON COUNTY, IOWA

CRAPNELL LAND SURVEYING COMPANY / MAJOR ENGINEERING 814 E. RIVER DRIVE DAVENPORT, IOWA 52002-3256  
UNITED STATES PUBLIC LAND SURVEY CORNER CERTIFICATE

Fee 6.00

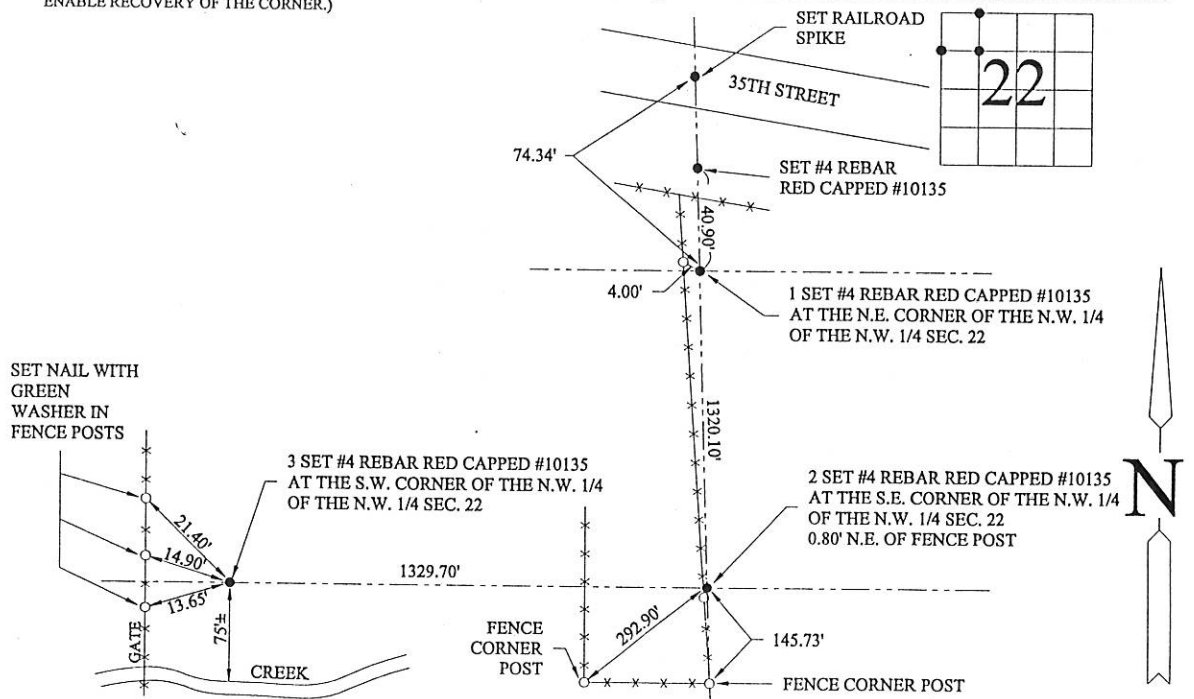
OF  
Land Survey Monuments situated in Section 22, Township 84, Range 3E  
of the Fifth Principal Meridian, JACKSON County, Iowa.  
Previously recorded in \_\_\_\_\_ in County Recorder's Office

(Show reason for preparing this certificate, the evidence and detailed procedures used in establishing the corner positions and monumentation found or placed.)

Monument Description and Remarks: 1 SET #4 REBAR RED CAPPED #10135 AT THE N.E. CORNER OF THE N.W. 1/4 OF THE N.W. 1/4 SECTION 22-84-3E  
2 SET #4 REBAR RED CAPPED #10135 AT THE S.E. CORNER OF THE N.W. 1/4 OF THE N.W. 1/4 SECTION 22-84-3E  
3 SET #4 REBAR RED CAPPED #10135 AT THE S.W. CORNER OF THE N.W. 1/4 OF THE N.W. 1/4 SECTION 22-84-3E  
CORNERS SET USING STANDARD SECTION BREAKDOWN METHODS

PLAN - VIEW

(SHOW A MINIMUM OF THREE REFERENCE TIES TO DURABLE PHYSICAL OBJECTS, RELEVANT MONUMENTS AND PHYSICAL CONDITIONS THAT WILL ENABLE RECOVERY OF THE CORNER.)



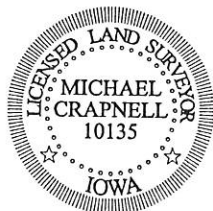
I HEREBY CERTIFY THAT THIS LAND SURVEYING DOCUMENT WAS PREPARED AND THE RELATED SURVEY WORK WAS PERFORMED BY ME OR UNDER MY DIRECT PERSONAL SUPERVISION AND THAT I AM A DULY LICENSED LAND SURVEYOR UNDER THE LAWS OF THE STATE OF IOWA.

Signature: \_\_\_\_\_  
Name typed or printed: MICHAEL D. CRAPNELL

Date: 03-06-03 Reg. No. 10135

My registration renewal date is December 31, 2004

SEAL



List Corners to be Indexed

Corners	Section	Twp	Range
N.E. CORNER N.W. 1/4, N.W. 1/4	22	84	3E
S.W. CORNER N.W. 1/4, N.W. 1/4	22	84	3E
S.E. CORNER N.W. 1/4, N.W. 1/4	22	84	3E