

Sec. 16

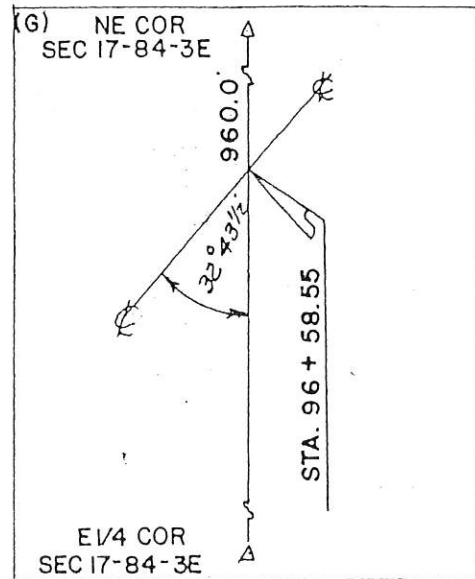
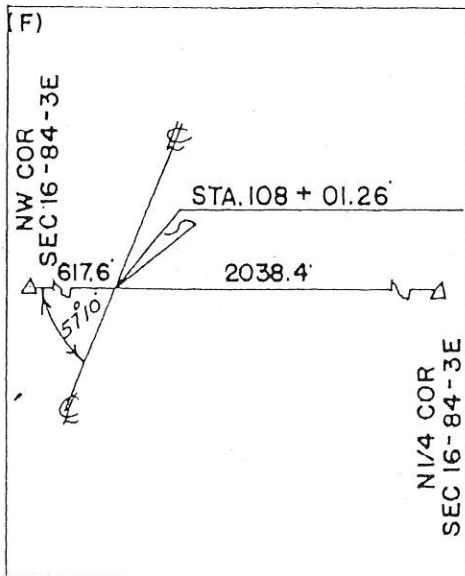
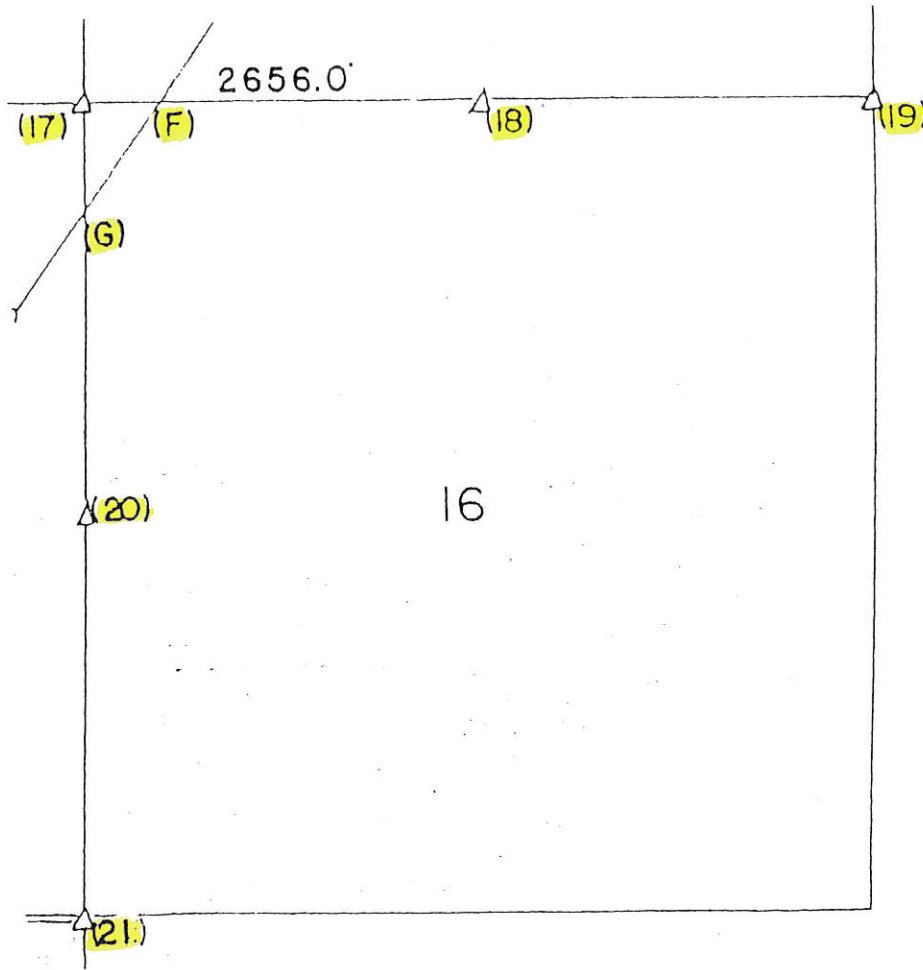
LAND T-84&85-N CORNER SURVEY R-3-E
 MADE FOR IOWA STATE HIGHWAY COMMISSION FOR THE PURPOSE OF R.O.W. DESCRIPTIONS ON RELOCATION OF IOWA PRIMARY ROAD NO 62 FROM MAQUOKETA NORTH TO TOWN OF ANDREW.
 MADE BY JOHN D. FRANKLIN JACKSON COUNTY R.L.S. NO. 2051 F-991
 JUNE-JULY 1958

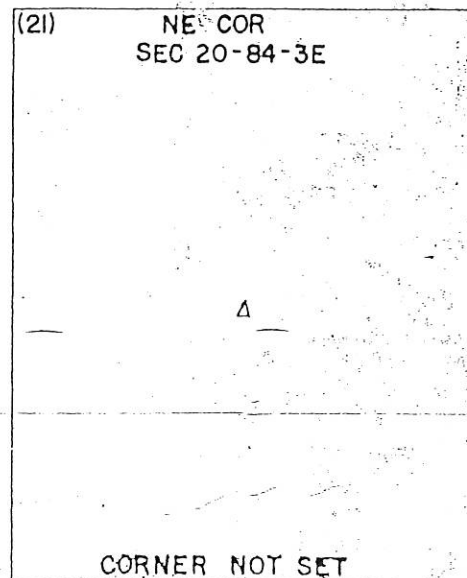
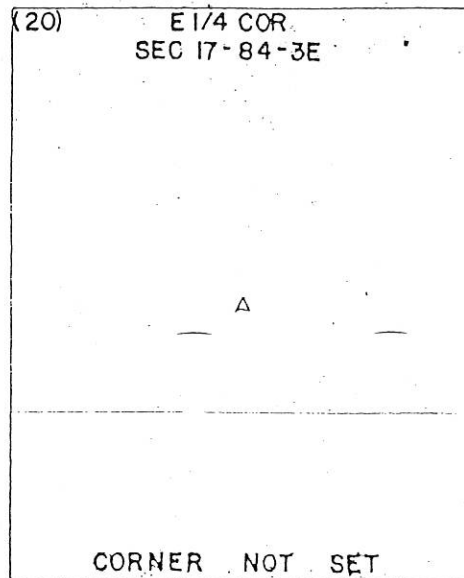
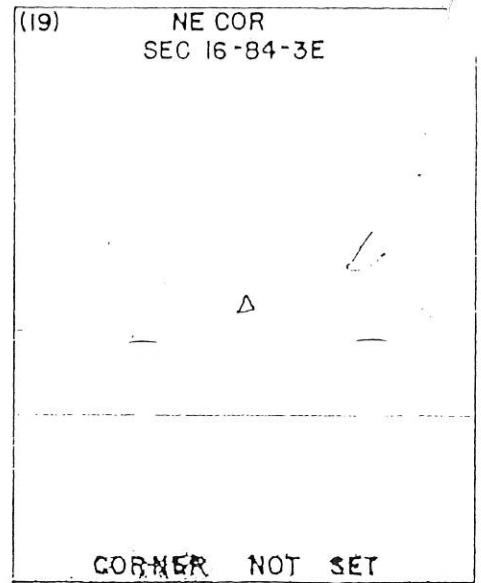
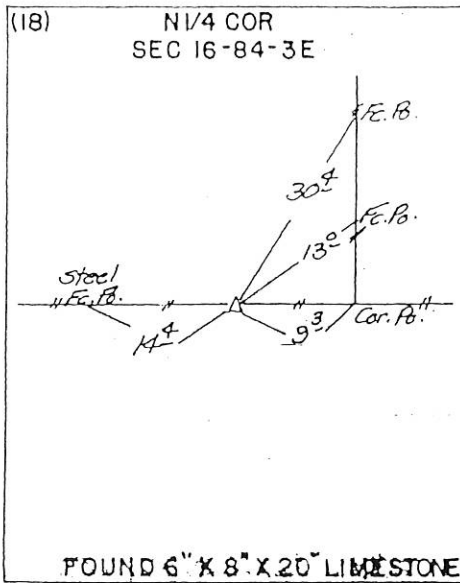
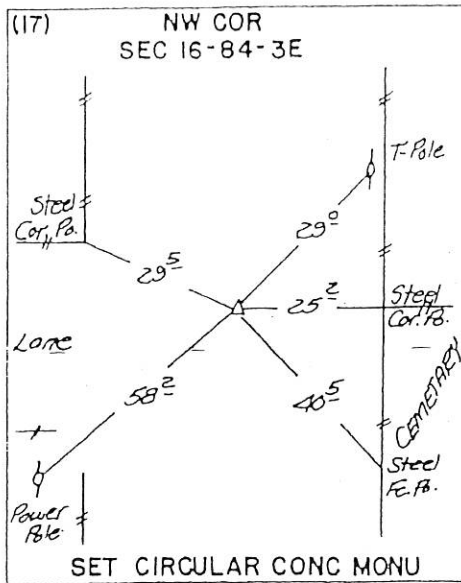
ALL DISTANCES WERE CAREFULLY MEASURED AND MAY NOT AGREE WITH ROAD SURVEY STATIONING.
 FOR COMPLETE INFORMATION ON THIS SURVEY, SEE FIELD NOTES ON FILE IN NAMES OFFICE.

I HEREBY CERTIFY THAT THIS PLAT IS A TRUE REPRESENTATION OF A SURVEY MADE BY ME, ASSISTED BY JAMES D. FRANKLIN, R.P. POPELKA, R.H. JANSZ, W.M. MYERS, L.R. MC GUIRE AND R. P. VAN HORBECK, ALL DULY SWORN, AND IS CORRECT TO THE BEST OF MY KNOWLEDGE.

SIGNED: November 21, 1958

John D. Franklin
 JOHN D. FRANKLIN R.L.S. NO. 2051





UNITED STATES PUBLIC LAND SURVEY CORNER CERTIFICATE

SLSI 9-90

OF

Land Survey Monuments situated in Section 16, Township 84N, Range 3E, of the Fifth Principal Meridian, Jackson County, Iowa.
Previously recorded in _____ in County Recorder's Office.

(Show reason for preparing this certificate, the evidence and detailed procedures used in establishing the corner positions and monumentation found or placed.)

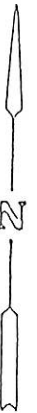
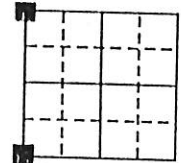
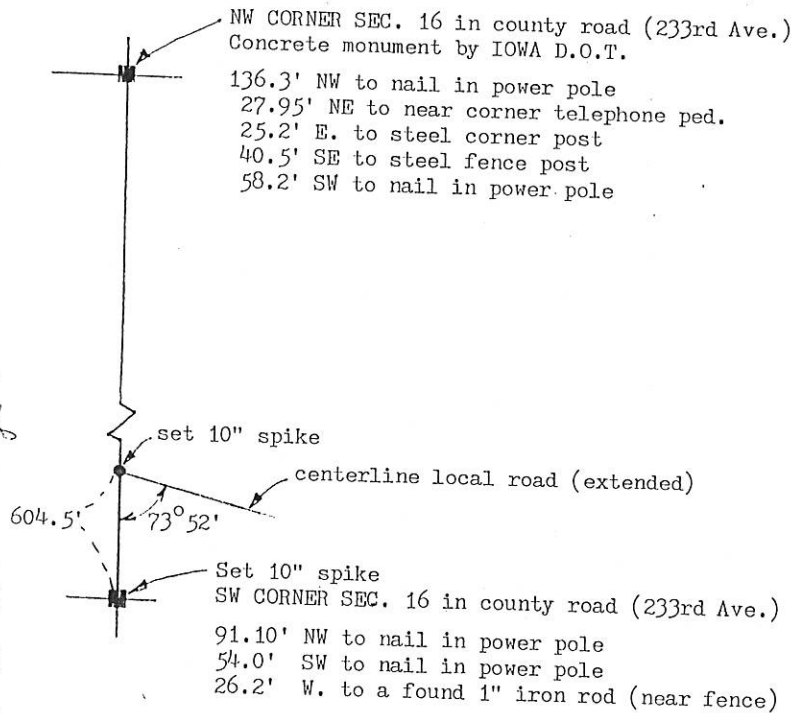
Monument Description and Remarks: For Brady survey. Found NW corner per Iowa D.O.T.
ties. Concrete monument was 6" deep. Set 10" spike alongside.

Searched for SW corner monument per location given in survey plats recorded in Jackson
Co. Recorder's Office (Book 1-C, Page 93 and Book 1-D, Page 127). Did not find mon.

Set 10" spike at the location given in above noted survey plats.

PLAN - VIEW

(Show a minimum of three reference ties to durable physical objects, relevant monuments and physical conditions that will enable recovery of the corner.)



FILE NO. 3271
BOOK 1 PAGE 93

1992 JUN 22 AM 9:58

SHIRLY KITTENBUR
JACKSON COUNTY, IOWA
RECORDER

Ch. 500

I hereby certify that the survey work was completed and this certificate was prepared by me or under my direct personal supervision and that I am a duly registered land surveyor under the laws of the state of Iowa.

Signature: Thomas C. Tucker
Name typed or printed: Thomas C. Tucker
Date: 6/16/92 Reg. No. 5339



SEAL

Corners	List Corners to be Indexed		
	Section	Twp	Range
NW & SW	16	84N	3E

BOOK 1 PAGE 93

9-20-04 See Corner Cert in Bk 2 Page 308

02 DEC 16 PM 1:48

PREPARED BY: EGGER ENGINEERING AND LAND SURVEYING, P.C.

2395 TECH DRIVE SUITE 2 BETTENDORF, IOWA 52722 563-332-6000
PHYLLIS M. GERLACH
JACKSON COUNTY, IOWA
RECORDER

UNITED STATES PUBLIC LAND SURVEY CORNER CERTIFICATE
OF

Land Survey Monuments situated in Section 16, Township 84, Range 3E, of the Fifth Principal Meridian, JACKSON County, Iowa. Previously recorded in NOT RECORDED in County Recorder's Office.

(book, page, document number, etc.)

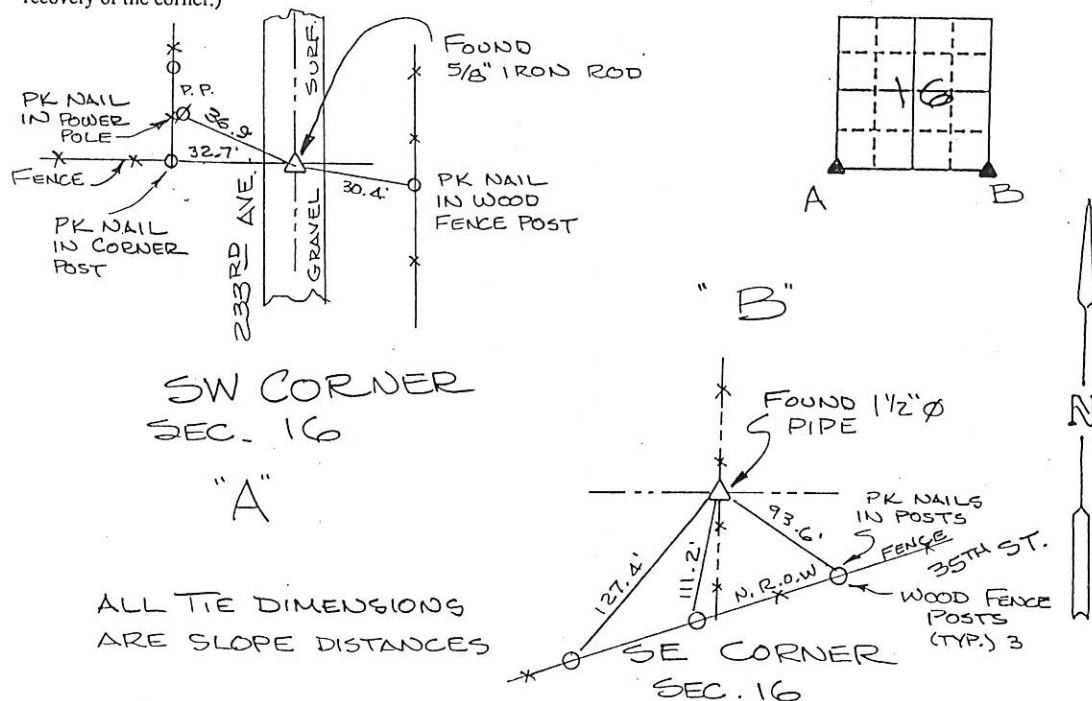
(Show reason for preparing this certificate, the evidence and detailed procedures used in establishing the corner positions and monumentation found or placed.)

Monument Description and Remarks: FOUND 5/8" IRON ROD "BENT" AT SW COR
OF SECTION - NEVER HAD RECORDED TIES

FOUND 1 1/2" IRON PIPE AT SE CORNER OF SECTION - NO RECORD
TIES.

PLAN - VIEW

(Show a minimum of three reference ties to durable physical object, relevant monuments and physical conditions that will enable recovery of the corner.)

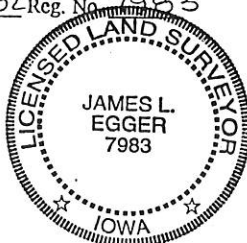


I hereby certify that the survey work was completed and this certificate was prepared by me or under my direct supervision and that I am a duly registered land surveyor under the laws of the state of Iowa.

Signature: James L. Egger
James L. Egger L.S.

Date: DEC. 10, 2002 Reg. No. 7983

SEAL



Corners	List Corners to be Indexed		
	Section	Twp	Range
SE	16	84	3E
SW	16	84	3E

FILE NO. 04-258
BOOK 2 PAGE 218

04 JAN 21 AM 9:37

PREPARED BY: EGGER ENGINEERING AND LAND SURVEYING, P.C.
2395 TECH DRIVE SUITE 2 BETTENDORF, IOWA 52722 563-332-6330

PHYLLIS M. GERLACH
JACKSON COUNTY, IOWA
RECORDER

Fee 11.

UNITED STATES PUBLIC LAND SURVEY CORNER CERTIFICATE
OF

Land Survey Monuments situated in Section 16, Township 84N, Range 3E, of the Fifth Principal Meridian, JACKSON County, Iowa. Previously recorded in NOT RECORDED PREVIOUSLY in County Recorder's Office.

(book, page, document number, etc.)

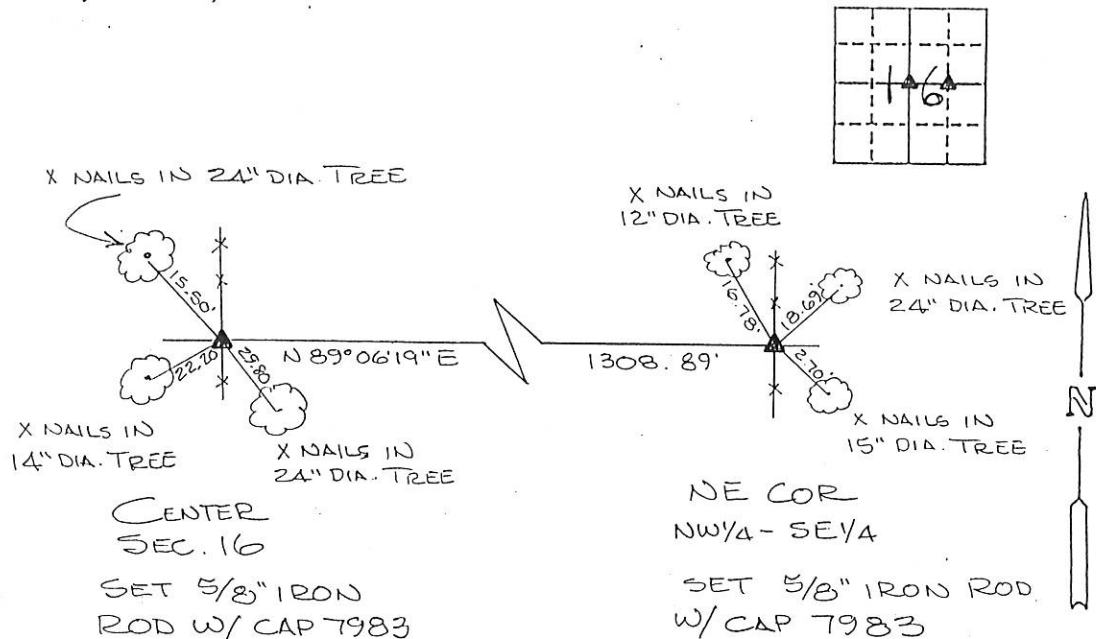
(Show reason for preparing this certificate, the evidence and detailed procedures used in establishing the corner positions and monumentation found or placed.)

Monument Description and Remarks: CENTER SECTION 16 WAS ESTABLISHED BY THE INTERSECTION OF N-S FENCELINE WITH E-W FENCELINE

NE COR OF NW 1/4 OF SE 1/4 WAS ESTABLISHED BY THE INTERSECTION OF N-S FENCELINE WITH A E-W FENCELINE

PLAN - VIEW

(Show a minimum of three reference ties to durable physical object, relevant monuments and physical conditions that will enable recovery of the corner.)

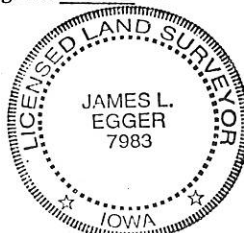


I hereby certify that the survey work was completed and this certificate was prepared by me or under my direct supervision and that I am a duly registered land surveyor under the laws of the state of Iowa.

Signature: James L. Egger
James L. Egger L.S.

Date: 11/19/03 Reg. No. 7983

SEAL



List Corners to be Indexed
Corners Section Twp Range

CENTER 16 84N 3E

NE COR NW 1/4 - SE 1/4 16 84N 3E

FILE NO. 04-259
BOOK 2 PAGE 279

04 JAN 21 AM 9:37

PREPARED BY: EGGER ENGINEERING AND LAND SURVEYING, P.C.
2395 TECH DRIVE SUITE 2 BETTENDORF, IOWA 52722 563-332-6330

PHYLLIS M. GERLACH
JACKSON COUNTY, IOWA
RECORDER
Fee 11.00

UNITED STATES PUBLIC LAND SURVEY CORNER CERTIFICATE
OF

Land Survey Monuments situated in Section 16, Township 84N, Range 3E, of the Fifth Principal Meridian, JACKSON County, Iowa. Previously recorded in NOT RECORDED PREVIOUSLY in County Recorder's Office.

(book, page, document number, etc.)

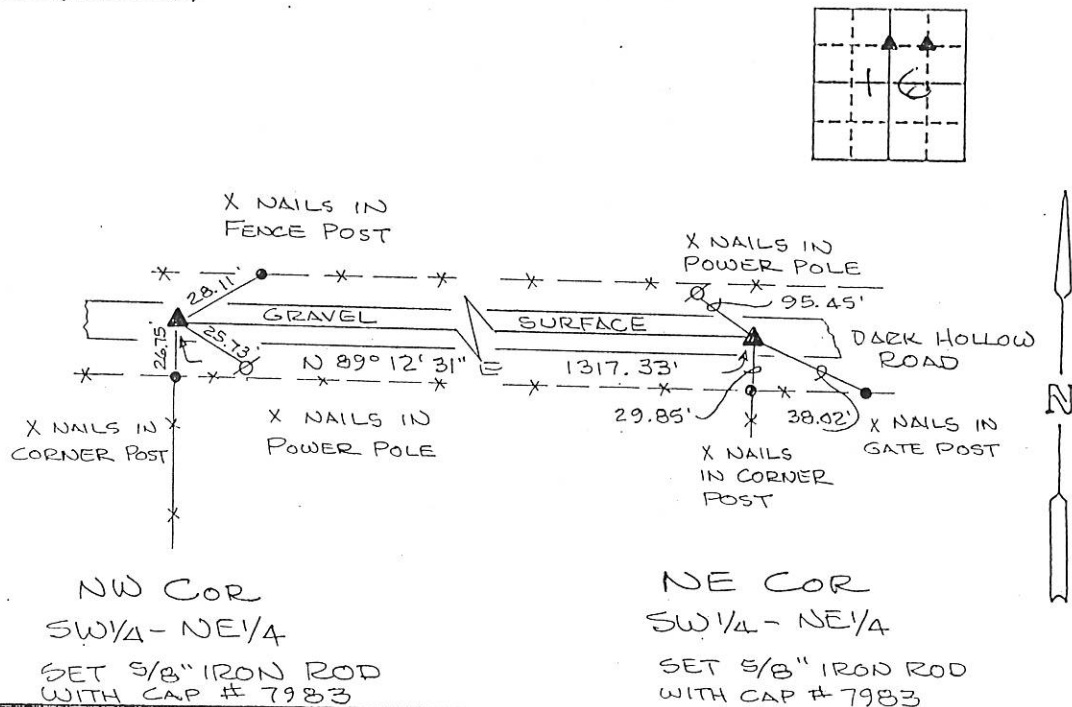
(Show reason for preparing this certificate, the evidence and detailed procedures used in establishing the corner positions and monumentation found or placed.)

Monument Description and Remarks: NW COR SW 1/4 - NE 1/4 SET 5/8" ROD AT THE INTERSECTION OF THE CENTERLINE OF DARK HOLLOW ROAD WITH A N-S FENCELINE

NE COR SW 1/4 - NE 1/4 SET 5/8" IRON ROD AT THE INTERSECTION OF THE CENTERLINE OF DARK HOLLOW ROAD WITH A N-S FENCELINE

PLAN - VIEW

(Show a minimum of three reference ties to durable physical object, relevant monuments and physical conditions that will enable recovery of the corner.)

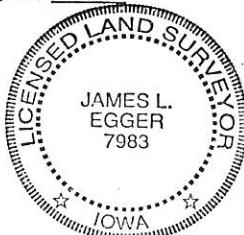


I hereby certify that the survey work was completed and this certificate was prepared by me or under my direct supervision and that I am a duly registered land surveyor under the laws of the state of Iowa.

Signature: James L. Egger
James L. Egger L.S.

Date: 11/19/03 Reg. No. 7983

SEAL



List Corners to be Indexed
Corners Section Twp Range

NW COR 16 84N 3E
SW 1/4 - NE 1/4

NE COR 16 84N 3E
SW 1/4 - NE 1/4

FILE 04-4222
BOOK 2 PAGE 307

04 SEP 20 PM 1:03

PHYLLIS M. GERLACH
JACKSON COUNTY, IOWA
RECORDER Fee 1.00

Prepared by: SCHNEIDER Land Surveying and Planning, Inc. P.O. Box 128 Farley, Iowa 52046 563-744-3631

UNITED STATES PUBLIC LAND SURVEY CORNER CERTIFICATE OF

Land Survey Monuments situated in Section 16, Township 84 North, Range 3 East of the Fifth Principal Meridian, Jackson County, Iowa.

Previously recorded NONE OF RECORD

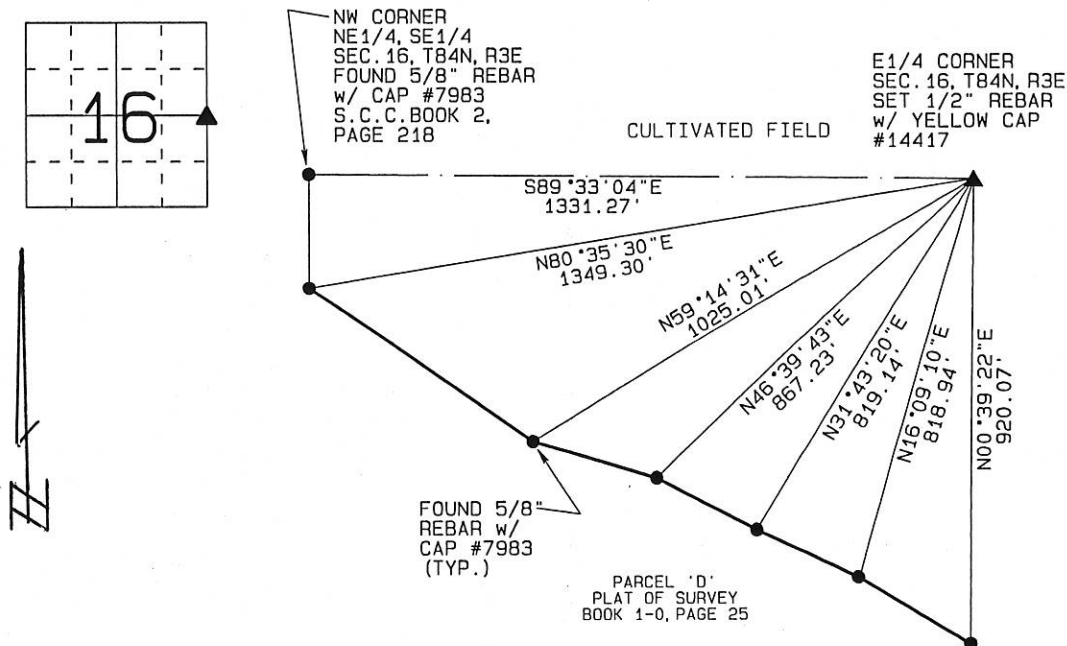
(BOOK, PAGE / INST. NO. / CABINET, SLIDE)

(Show reason for preparing this certificate, the evidence and detailed procedures used in establishing the corner positions and monumentation found or placed.)

Monument Description and Remarks: THE E1/4 CORNER OF SEC. 16, T84N, R3E WAS ESTABLISHED AT THE INTERSECTION OF A STRAIGHT LINE FROM THE SE CORNER TO THE NE CORNER OF SECTION 16 WITH A LINE PROJECTED FROM THE CENTER OF SAID SECTION 16 THROUGH THE NW CORNER OF THE NE1/4 OF THE SE1/4 OF SAID SECTION 16.

PLAN - VIEW

(Show a minimum of three reference ties to durable physical objects, relevant monuments and physical conditions that will enable recovery of the corner.)



I hereby certify that this land surveying document was prepared and the related survey work was performed by me or under my direct personal supervision and that I am a duly licensed Land Surveyor under the laws of the State of Iowa.

David P. Schneider 8/19/2004
David P. Schneider P.L.S. #14417 Date:
My license renewal date is December 31, 2005.

Pages or sheets covered by this seal: THIS SHEET ONLY

SCHNEIDER
Land Surveying & Planning, Inc.
P.O. Box 128 Farley, Iowa 52046
Ph. #563-744-3631 Fax #563-744-3629



List Corners to be Indexed

Corners	Section	Twp	Range
E1/4	16	84N	R3E

JOB NO. 667A

FILE NO. 04-4223
BOOK 2 PAGE 308

04 SEP 20 PM 1:03

PHYLLIS M. GERLACH
JACKSON COUNTY, IOWA
RECORDER Fee 7.00

Prepared by: SCHNEIDER Land Surveying and Planning, Inc. P.O. Box 128 Farley, Iowa 52046 563-744-3631

UNITED STATES PUBLIC LAND SURVEY CORNER CERTIFICATE OF

Land Survey Monuments situated in Section 16, Township 84 North, Range 3 East of the Fifth Principal Meridian, Jackson County, Iowa.

Previously recorded SW CORNER - S.C.C. BOOK 1, PAGES 93, 235, AND 587 S1/4 CORNER - S.C.C. BOOK 1, PAGE 158
(BOOK, PAGE / INST. NO. / CABINET, SLIDE)

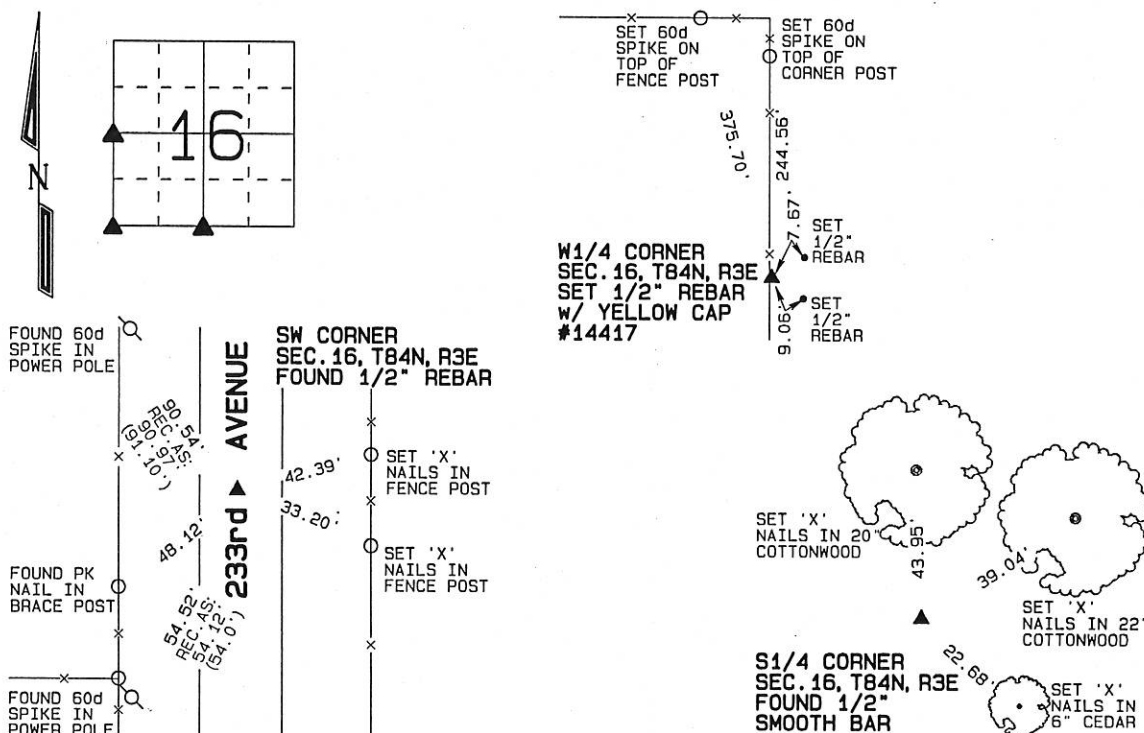
(Show reason for preparing this certificate, the evidence and detailed procedures used in establishing the corner positions and monumentation found or placed.)

Monument Description and Remarks: THE W1/4 CORNER OF SEC. 16, T84N, R3E WAS ESTABLISHED USING OCCUPATION EVIDENCE TO THE NORTH AND SOUTH.

A 1/2" REBAR WAS FOUND AT THE SW CORNER OF SEC. 16, T84N, R3E AS ILLUSTRATED IN SECTION CORNER CERTIFICATES FILED IN S.C.C. BOOK 1, PAGE 93 AND PAGE 235. THE SW CORNER WAS RETIED BECAUSE THE SECTION CORNER CERTIFICATE FILED IN S.C.C. BOOK 1, PAGE 587 SHOWED A 5/8" REBAR AT THE LOCATION WHERE AN ANGLE IRON (JUNK) LYING HORIZONTALLY IN THE ROADBED WAS FOUND. THE 1/2" REBAR WAS RETIED AND USED AS THE SW CORNER OF SECTION 16.
A 1/2" SMOOTH BAR WAS FOUND AT THE S1/4 CORNER OF SEC. 16, T84N, R3E AS ILLUSTRATED IN SECTION CORNER CERTIFICATE FILED IN S.C.C. BOOK 1, PAGE 158. THE CORNER WAS RETIED BECAUSE THE PREVIOUS TIES COULD NOT BE FOUND. THE SMOOTH BAR WAS TIED AND USED AS THE S1/4 CORNER.

PLAN - VIEW

(Show a minimum of three reference ties to durable physical objects, relevant monuments and physical conditions that will enable recovery of the corner.)



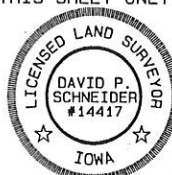
I hereby certify that this land surveying document was prepared and the related survey work was performed by me or under my direct personal supervision and that I am a duly licensed Land Surveyor under the laws of the State of Iowa.

David P. Schneider 8/19/2004
David P. Schneider P.L.S. #14417 Date
My license renewal date is December 31, 2005.

Pages or sheets covered by this seal: THIS SHEET ONLY

SCHNEIDER
Land Surveying & Planning, Inc.

P.O. Box 128 Farley, Iowa 52046
Ph. #563-744-3631 Fax #563-744-3629



List Corners to be Indexed

Corners	Section	Twp	Range
W1/4	16	84N	R3E
SW	16	84N	R3E
S1/4	16	84N	R3E



Document 05-1115

Book 2 Page 342 Type 06 23 Pages 1
Date 3/23/2005 Time 9:15 AM
Rec Amt \$7.00

PHYLLIS M. GERLACH, RECORDER
JACKSON COUNTY IOWA

Prepared by: SCHNEIDER Land Surveying and Planning, Inc. P.O. Box 128 Farley, Iowa 52046 563-744-3631

UNITED STATES PUBLIC LAND SURVEY CORNER CERTIFICATE OF

Land Survey Monuments situated in Section 16, Township 84 North, Range 3 East
of the Fifth Principal Meridian, Jackson County, Iowa.

Previously recorded

NONE OF RECORD

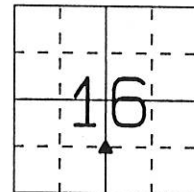
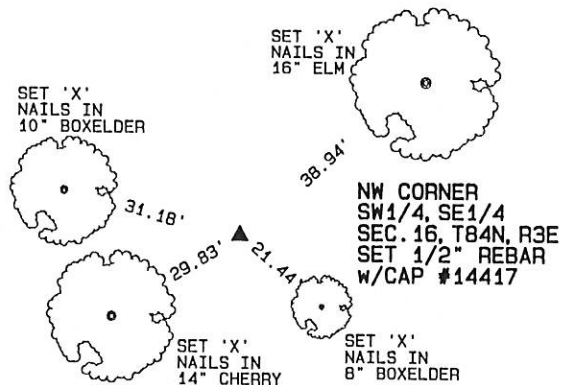
(BOOK, PAGE / INST. NO. / CABINET, SLIDE)

(Show reason for preparing this certificate, the evidence and detailed procedures used in establishing the corner positions and monumentation found or placed.)

Monument Description and Remarks: THE NW CORNER OF THE SW1/4 OF THE SE1/4 OF SEC. 16, T84N, R3E WAS
PLACED AT THE MIDPOINT OF A LINE FROM THE CENTER TO THE S1/4 CORNER OF SAID SECTION 16.

PLAN - VIEW

(Show a minimum of three reference ties to durable physical objects, relevant monuments and physical conditions that will enable recovery of the corner.)



I hereby certify that this land surveying document was prepared and the related survey work was performed by me or under my direct personal supervision and that I am a duly licensed Land Surveyor under the laws of the State of Iowa.

David P. Schneider P.L.S. #14417

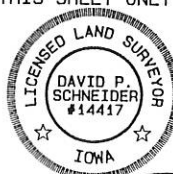
Date: 3/23/2005

My license renewal date is December 31, 2005.

Pages or sheets covered by this seal: THIS SHEET ONLY

SCHNEIDER
Land Surveying & Planning, Inc.

P.O. Box 128 Farley, Iowa 52046
Ph. #563-744-3631 Fax#563-744-3629



List Corners to be Indexed

Corners	Section	Twp	Range
NW CORNER SW1/4, SE1/4	16	84N	3E

JOB NO. 6670



Document 05-3349

Book 2 Page 382 Type 06 023 Pages 1
Date 8/22/2005 Time 1:01 PM
Rec Amt \$7.00

PHYLLIS M. GERLACH, RECORDER
JACKSON COUNTY IOWA

PREPARED BY: MICHAEL J. WEBER, WEBER SURVEYING, LLC, 26789 46TH AVE, BERNARD, IA 52032 (563) 879-4173

UNITED STATES PUBLIC LAND SURVEY CORNER CERTIFICATE OF

LAND SURVEY MONUMENTS SITUATED IN SECTION 16, TOWNSHIP 84 NORTH, RANGE 3 EAST
OF THE FIFTH PRINCIPAL MERIDIAN, JACKSON COUNTY, IOWA.
PREVIOUSLY RECORDED NONE UNLESS OTHERWISE NOTED

(book, page, document number, etc.)

(Show reason for preparing this certificate, the evidence and detailed procedures used in establishing the corner positions and nonumentation found or placed.)

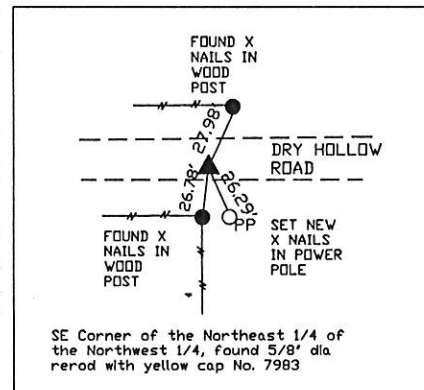
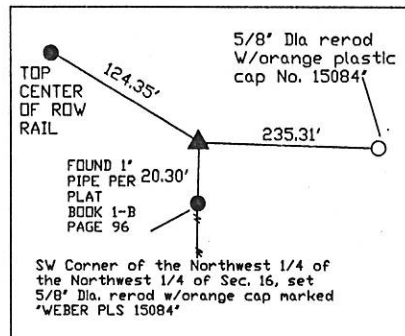
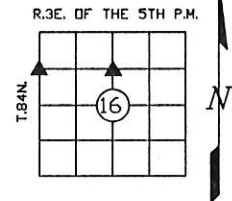
Monument Description and Remarks:

SW Corner of the Northwest 1/4 of the Northwest 1/4 of Sec. 16, established corner online between the Northwest Corner of Sec. 16 and a found pipe on the Section between sec. 17 and Sec. 16 as shown on Plat filed in Book 1-B Page 96 and 20.3 feet North of said pipe, set 5/8" Dia. rerod w/orange cap marked "WEBER PLS 15084"

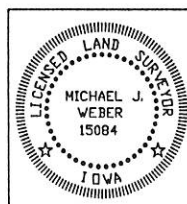
SE Corner of the Northeast 1/4 of the Northwest 1/4, found 5/8" dia rerod with yellow cap No. 7983 per filed Corner certificate in Book 2 Page 219 established new ties.

PLAN - VIEW

(Show a minimum of three reference ties to durable physical objects, relevant monuments and physical conditions that will enable recovery of the corner.)



DWG. NAME: TILL



I HEREBY CERTIFY THAT THIS LAND SURVEYING DOCUMENT WAS
PREPARED AND THE RELATED SURVEY WORK WAS PERFORMED BY ME OR
UNDER MY DIRECT PERSONAL SUPERVISION AND THAT I AM A DULY
LICENSED LAND SURVEYOR UNDER THE LAWS OF THE STATE OF IOWA.

Michael J. Weber August 12, 2005
MICHAEL J. WEBER (DATE)
LICENSE NUMBER 15084

MY LICENSE RENEWAL DATE IS DECEMBER 31, 2005

SHEETS COVERED BY THIS SEAL: 1

List Corners to be Indexed		
Corner	Sec	Twp Range
SW Corner	16	84N 3E
NW-NW		
SE Corner	16	84N 3E
NE-NW		

Book 2 Page 382