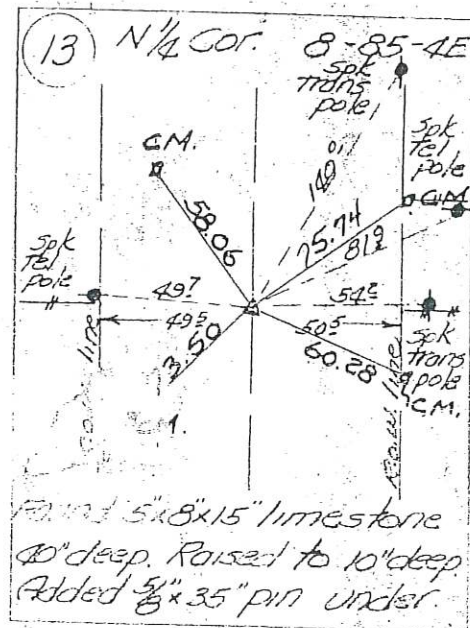
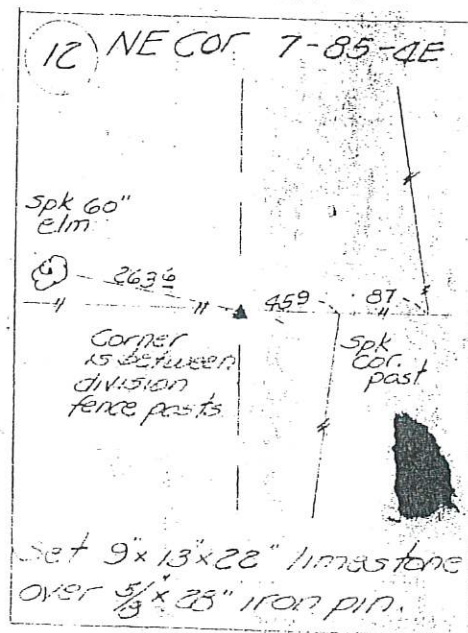
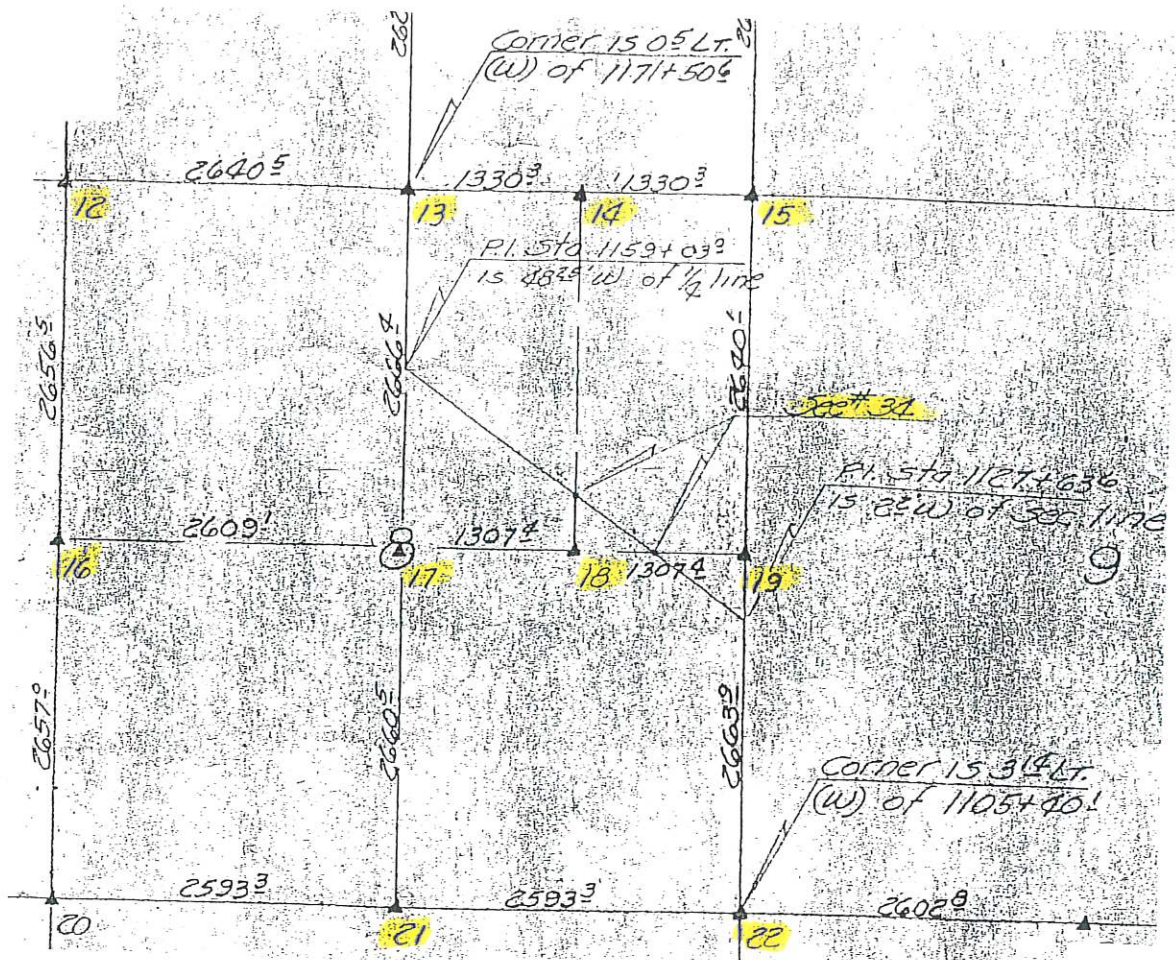


Sec. 8



# LAND CORNER SURVEY JACKSON COUNTY T85 & 86 N R4E

MADE FOR

IOWA STATE HIGHWAY COMMISSION

FOR ROW. DESCRIPTIONS ON PRIMARY 113 PROJECT FN 830A-1

JUNE-JULY 1941

G.R. ELLIOTT RLS 1841

see field notes filed in Ames office for complete information.





Document 14-1650

Book 3 Page 134 Type 15 001 Pages 1  
Date 5/23/2014 Time 11:46 AM  
Rec Amt \$7.00

ARLENE SCHAUF, RECORDER/REGISTRAR  
JACKSON COUNTY IOWA

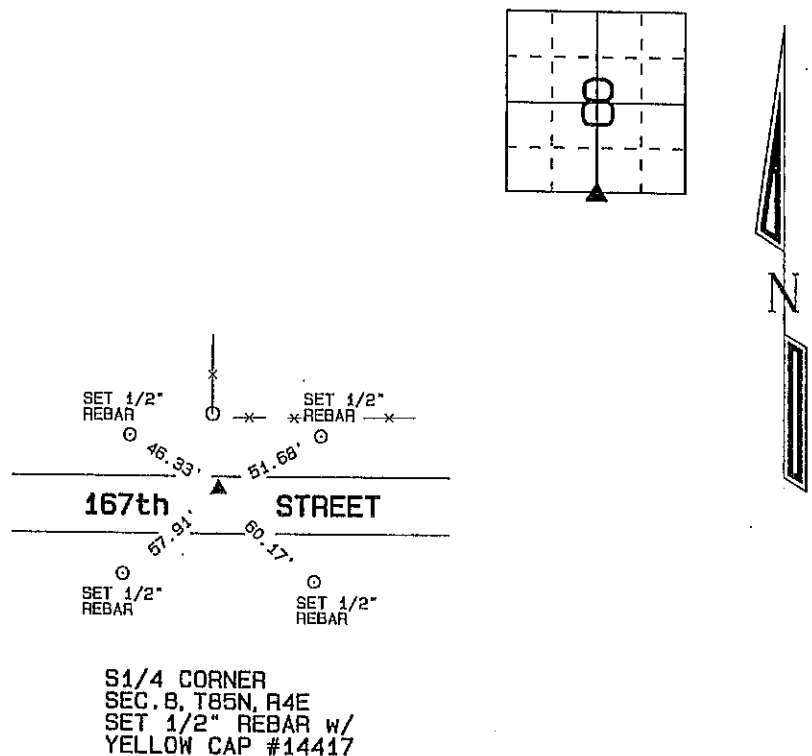
Prepared by: SCHNEIDER Land Surveying and Planning, Inc. P.O. Box 128 Farley, Iowa 52046 563-744-3631

### UNITED STATES PUBLIC LAND SURVEY CORNER CERTIFICATE OF

Land Survey Monuments situated in Section 8, Township 85 North, Range 4 East  
of the Fifth Principal Meridian, Jackson County, Iowa.  
Previously recorded (NONE OF RECORD)

Monument Description and Remarks: THE S1/4 CORNER OF SECTION 8, T85N, R4E WAS ESTABLISHED AT THE  
MIDPOINT OF A LINE FROM THE SW CORNER TO THE SE CORNER OF SAID SECTION 8 AS ILLUSTRATED ON THE IOWA HIGHWAY  
COMMISSION SECTION CORNER TIES RELATED TO THE IOWA HIGHWAY NO. 113 PROJECT IN THE EARLY 1940'S.

### PLAN - VIEW



S1/4 CORNER  
SEC. 8, T85N, R4E  
SET 1/2" REBAR w/  
YELLOW CAP #14417

I hereby certify that this land surveying document was prepared and the related survey work was performed by me or under my direct personal supervision and that I am a duly licensed Land Surveyor under the laws of the State of Iowa.

David P. Schneider P.L.S. #14417 Date: 4/21/2014  
My license renewal date is December 31, 2015.

Pages or sheets covered by this seal: THIS SHEET ONLY

**SCHNEIDER**  
Land Surveying & Planning, Inc.

P.O. Box 128 Farley, Iowa 52046  
Ph. #563-744-3631 Fax#563-744-3629



#### List Corners to be Indexed

Corners	Section	Twp	Range
S1/4	8	85N	4E



Document 23-2511

Type 15 001

Pages 1

Date 9/11/2023 Time 8:32 AM

Rec Amt \$7.00

ARLENE SCHAUF, RECORDER/REGISTRAR  
JACKSON COUNTY IOWA

PREPARED BY: MICHAEL J. WEBER, WEBER SURVEYING, LLC, 26789 46TH AVE, BERNARD, IA 52032 (563) 879-4173

## UNITED STATES PUBLIC LAND SURVEY CORNER CERTIFICATE OF

LAND SURVEY MONUMENTS SITUATED IN SECTION 8, TOWNSHIP 85 NORTH, RANGE 4 EAST  
OF THE FIFTH PRINCIPAL MERIDIAN, JACKSON COUNTY, IOWA.  
PREVIOUSLY RECORDED NONE

(book, page, document number, etc.)

(Show reason for preparing this certificate, the evidence and detailed procedures used in establishing the corner positions and monumentation found or placed.)

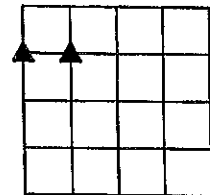
-NW COR., SW-NW, SEC. 8, T85N R4E OF THE 5TH P.M. PLACED 5/8" DIA. REROD W/ORANGE CAP NO. 15084. ESTABLISHED CORNER AT THE INTERSECTION OF OCCUPATION FENCE LINE RUNNING EAST, WEST & SOUTH.

-NE COR., SW-NW, SEC. 8, T85N R4E OF THE 5TH P.M. PLACED 5/8" DIA. REROD W/ORANGE CAP NO. 15084. ESTABLISHED CORNER ALONG THE EAST-WEST OCCUPATION FENCE LINE WITH THE INTERSECTION OF THE CALCULATED 1/4 1/4 LINE RUNNING NORTH-SOUTH.

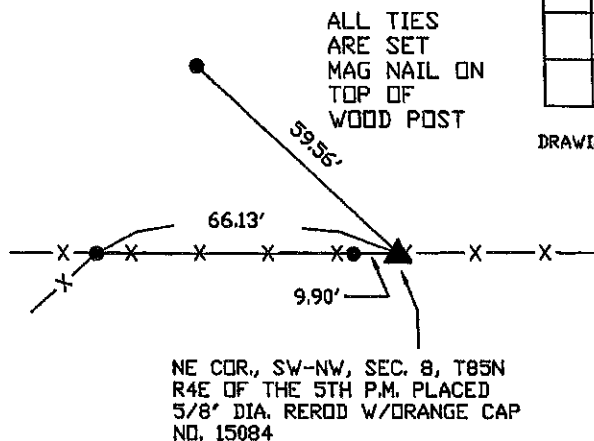
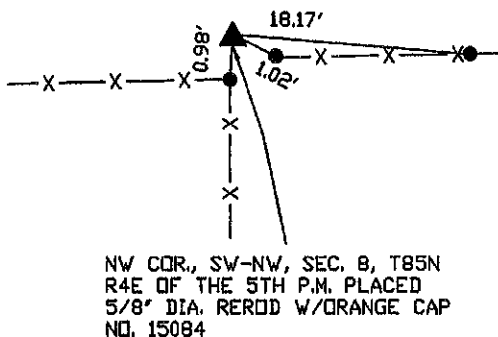
(Show a minimum of three reference ties to durable physical objects, relevant monuments and physical conditions that will enable recovery of the corner.)

### PLAN - VIEW

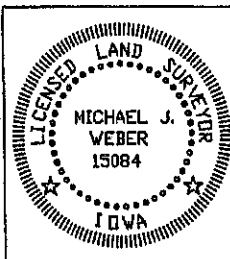
ALL TIES  
ARE SET  
MAG NAIL ON  
TOP OF  
WOOD POST



DRAWING NOT TO SCALE



DWG. NO. 23056



I HEREBY CERTIFY THAT THIS LAND SURVEYING DOCUMENT WAS  
PREPARED AND THE RELATED SURVEY WORK WAS PERFORMED BY ME OR  
UNDER MY DIRECT PERSONAL SUPERVISION AND THAT I AM A DULY  
LICENSED LAND SURVEYOR UNDER THE LAWS OF THE STATE OF IOWA.

*Michael J. Weber* September 8, 2023  
MICHAEL J. WEBER (DATE)

LICENSE NUMBER 15084

MY LICENSE RENEWAL DATE IS DECEMBER 31, 2017

SHEETS COVERED BY THIS SEAL: THIS SHEET

List Corners to be Indexed  
Corner Sec Twp Range

NW COR., SW-NW, 8-85-4E

NE COR., SW-NW, 8-85-4E